



The Ribeiro Companies

# MEDICAL OFFICE SPACE FOR LEASE 3,015 SQ. FT.



## 6512 S. MCCARRAN BLVD SUITE, RENO, NV 89509 QUAIL CORNERS

THE RIBEIRO COMPANIES HAVE SPECIALIZED IN COMMERCIAL PROPERTIES FOR OVER 50 YEARS.

**EXCLUSIVELY LISTED  
LEASE OPPORTUNITY**

**EDWARD G. YUILL B.0018931.LLC**  
ED.YUILL@RIBEIROCORP.COM

**CALL US TODAY AT  
775.825.7979**



The Ribeiro Companies

**OFFICE HOURS:**  
Monday-Friday  
8:00 AM—5:00 PM

6490 S. McCarran Blvd., Bldg. E  
Reno, NV 89509

[www.ribeirocorp.com](http://www.ribeirocorp.com)

*This information has been secured from sources we believe to be reliable, however, we make no representations or warranties, expressed or implied, as to the accuracy of the information. References to square footage or age are approximate. Buyer must verify the information and bears all risk for any inaccuracies. © 2014 The Ribeiro Companies  
[www.ribeirocorp.com](http://www.ribeirocorp.com)*

**Project Mgt./Brokerage: Edward G. Yuill**  
**Design/Development: Johnny A. Ribeiro**



The Ribeiro Companies

# PROPERTY INFORMATION

**6512 S. MCCARRAN BLVD, SUITE E • RENO, NV 89509**

Suite:	E
Asking Rent:	\$6,935.00 Per Month (\$2.30 psf)
CAM:	\$2,322.00 Per Month (\$0.77 psf)
Lease Term	Five year minimum; 3% annual base rent increase
Property Type:	RENO — GENERAL OFFICE (GO) - MEDICAL
Lease Type:	NNN
Tenancy:	Multi
Square Footage	3,015 sq. ft.
Available:	Now
Layout:	Reception area, 7 Exam Rooms, Conference Room, Breakroom, 3 Private Offices.
Year Built:	2003
Broker:	3%

**THE RIBEIRO COMPANIES HAVE SPECIALIZED IN COMMERCIAL PROPERTIES FOR OVER 50 YEARS.**

**EXCLUSIVELY LISTED  
LEASE OPPORTUNITY**

**EDWARD G. YUILL B.0018931.LLC**  
ED.YUILL@RIBEIROCORP.COM

**CALL US TODAY AT  
775.825.7979**



**OFFICE HOURS:**  
Monday-Friday  
**8:00 AM—5:00 PM**

6490 S. McCarran Blvd., Bldg. E  
Reno, NV 89509

**www.ribeirocorp.com**

*This information has been secured from sources we believe to be reliable, however, we make no representations or warranties, expressed or implied, as to the accuracy of the information. References to square footage or age are approximate. Buyer must verify the information and bears all risk for any inaccuracies. © 2014 The Ribeiro Companies  
www.ribeirocorp.com*

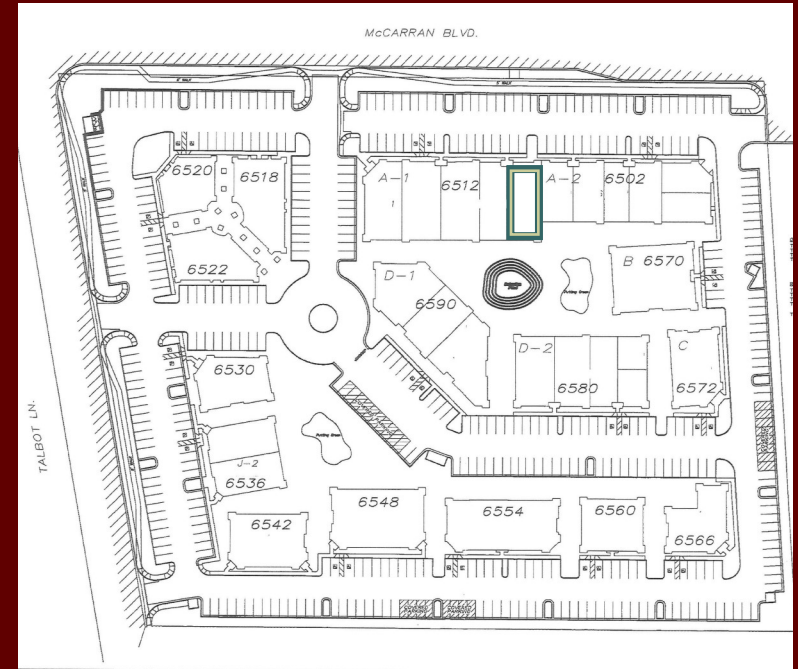
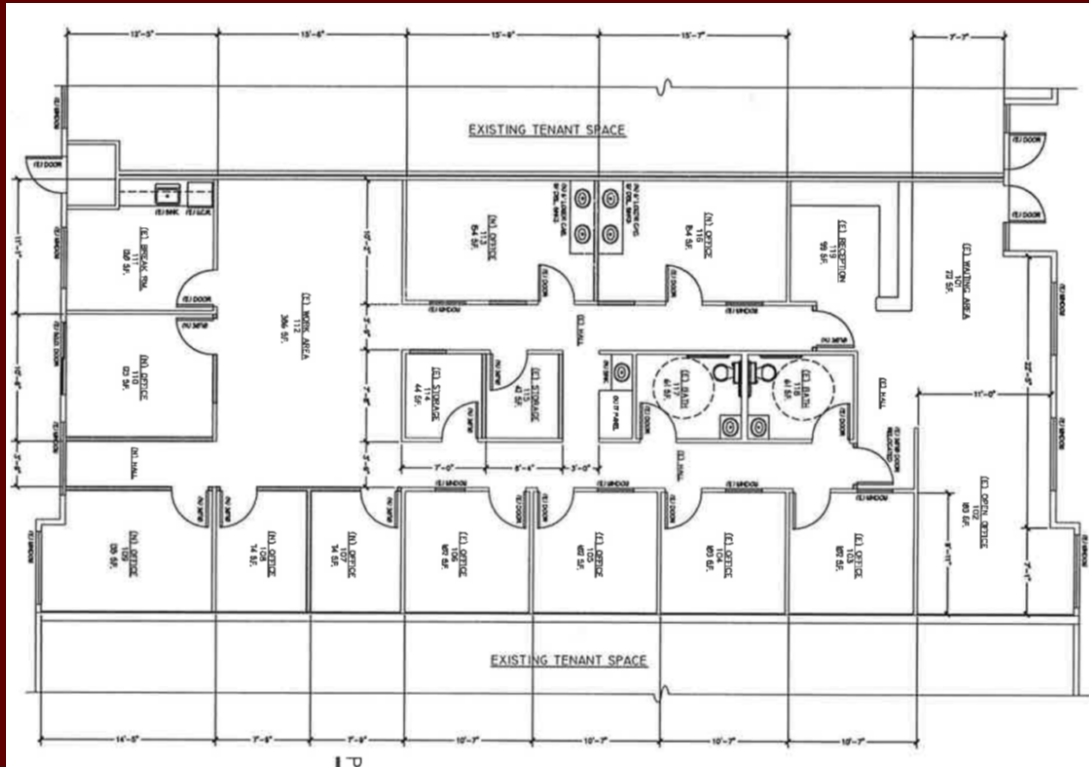
**Project Mgt./Brokerage: Edward G. Yuill**  
**Design/Development: Johnny A. Ribeiro**



The Ribeiro Companies

# FLOOR PLAN AND SITE PLAN

## 6512 S. MCCARRAN BLVD, SUITE E • RENO, NV 89509



**THE RIBEIRO COMPANIES HAVE SPECIALIZED IN COMMERCIAL PROPERTIES FOR OVER 50 YEARS.**

**EXCLUSIVELY LISTED  
LEASE OPPORTUNITY**

**EDWARD G. YUILL B.0018931.LLC**  
ED.YUILL@RIBEIROCORP.COM

**CALL US TODAY AT  
775.825.7979**



**OFFICE HOURS:**  
Monday-Friday  
8:00 AM—5:00 PM

6490 S. McCarran Blvd., Bldg. E  
Reno, NV 89509

[www.ribeirocorp.com](http://www.ribeirocorp.com)

*This information has been secured from sources we believe to be reliable, however, we make no representations or warranties, expressed or implied, as to the accuracy of the information. References to square footage or age are approximate. Buyer must verify the information and bears all risk for any inaccuracies. © 2014 The Ribeiro Companies  
[www.ribeirocorp.com](http://www.ribeirocorp.com)*

**Project Mgt./Brokerage: Edward G. Yuill**  
**Design/Development: Johnny A. Ribeiro**