

HIGH-STYLE MEDICAL OFFICE SPACE FOR LEASE

BARGAIN RENT: ONLY \$3,975/Mo

2 ADJOINING OPEN AREAS AVAILABLE FOR YOUR DESIGN & USE

RENT INCLUDES 2-HEATED, SECURE GARAGE PARKING SPACES



FRANKLIN PARK MEDICAL CENTER 220 E. ROWAN AVE. SPOKANE

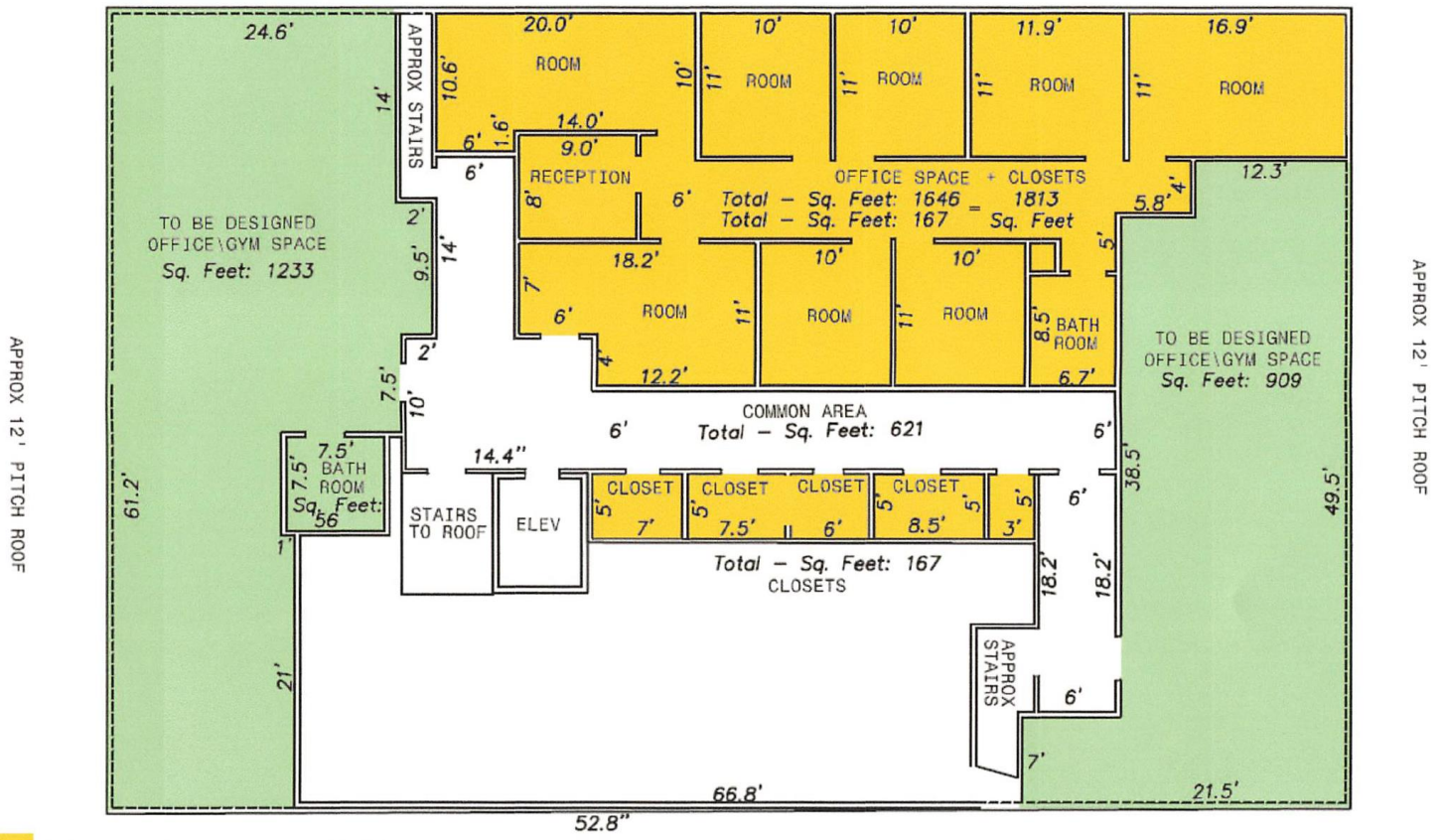
BENEFITS OF LOCATING YOUR OFFICE HERE

- 1. Great Location Across from Providence Holy Family Hospital**
- 2. Complete, New Finished, High Grade, Medical Space Move-In-Ready**
- 3. ADJOINING OPEN SPACE PERFECT FOR PHYSICAL THERAPY & YOUR DESIGN**
- 4. Secure, Heated, 2 Assigned Garage Parking Stalls in Basement Included**
- 5. Classy, New Elevator from Basement to This Top Floor Office Suite**
- 6. New Security System along with New High Intensity Lighting Outside**
- 7. Updated HVAC Maintained by McKinstry**

PRESENTED BY DON ARSENAUT, CCIM OF ARSENAUT REALTY ADVISORS, LLC

Please Call Don at 253-759-5000 OR EMAIL DonaldCCIM@Gmail.com

4TH FLOOR of FRANKLIN PARK MEDICAL CENTER



- Move in ready Office Space
- Ready for your use and design

APPROX 12' PITCH ROOF

