

RETAIL SPACE

SAYREVILLE PLAZA

Middlesex County

960 ROUTE 9 SOUTH
SAYREVILLE | NEW JERSEY

**1,700 SF -
8,422 SF**

Highly Visible Strip Center on Route 9!
Fully Equipped Hair Salon Available

FOOD USE PERMITTED
JOIN PLANET FITNESS



SPACE DETAILS

SITE PLAN



SIZE	
1A	8,422 SF
1B	8,200 SF *
2	5,705 SF - LOI
8	1,700 SF
10	2,420 SF
13A	1,915 SF

*divisible

ASKING RENT
Upon Request

NNN
\$7.00 PSF (est.)

GLA
82,500 SF

POSSESSION
Immediate

CO-TENANTS
Planet Fitness, Burger King, Farmer's Market, Pronto Pizza, Star Nails, Vietnamese Restaurant, Laundry, Cash for Gold, Liberty Tax, All for Less, Mathnasium

COMMENTS
Unique Opportunity Available: Fully Equipped Hair Salon, Ready For Tenant To Move In And Immediately Operate

High Visibility Strip Center

390 Parking Spaces

80,000 VPD On Route 9

Prominent Pylon Highway Signage

Access To Northbound And Local Traffic Via Burlew Place

Great For Medical And Wellness

Food Use Permitted

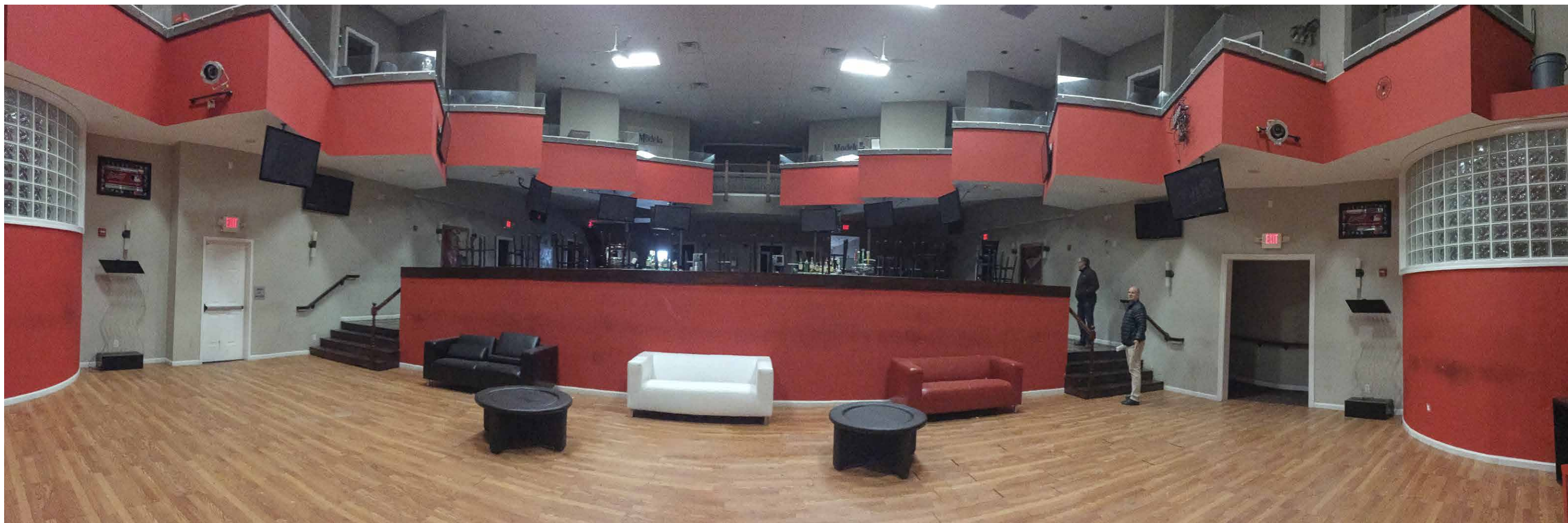
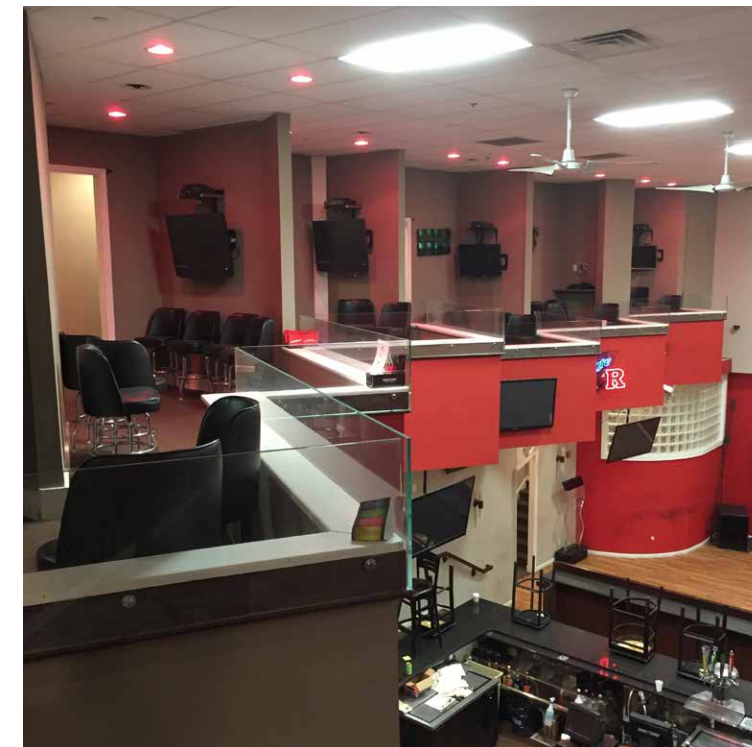
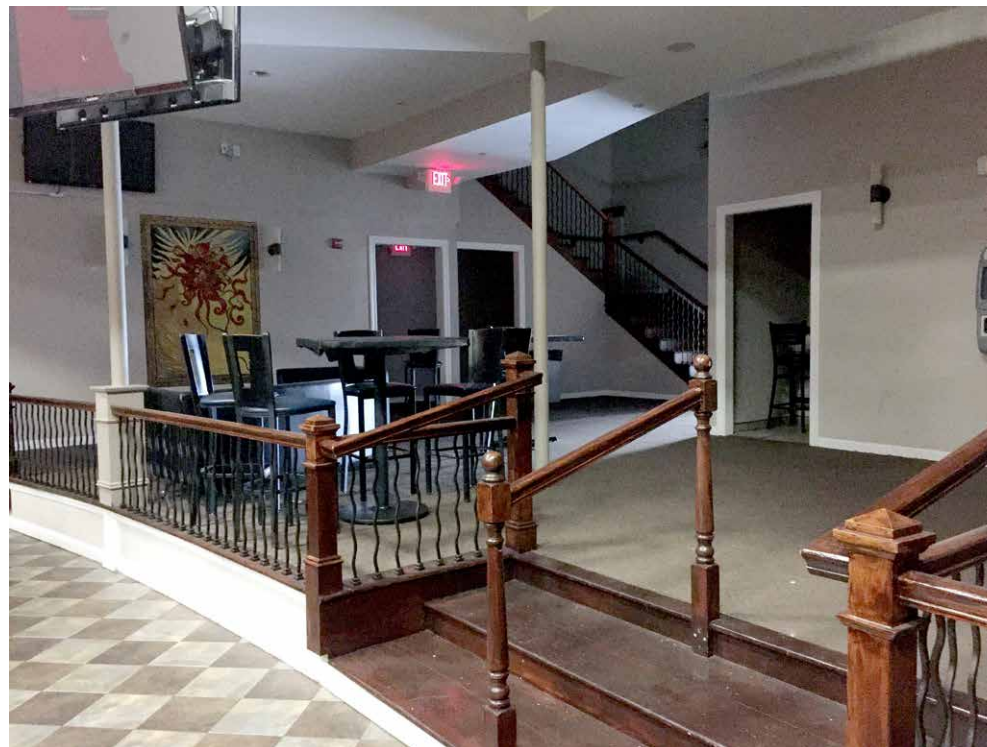
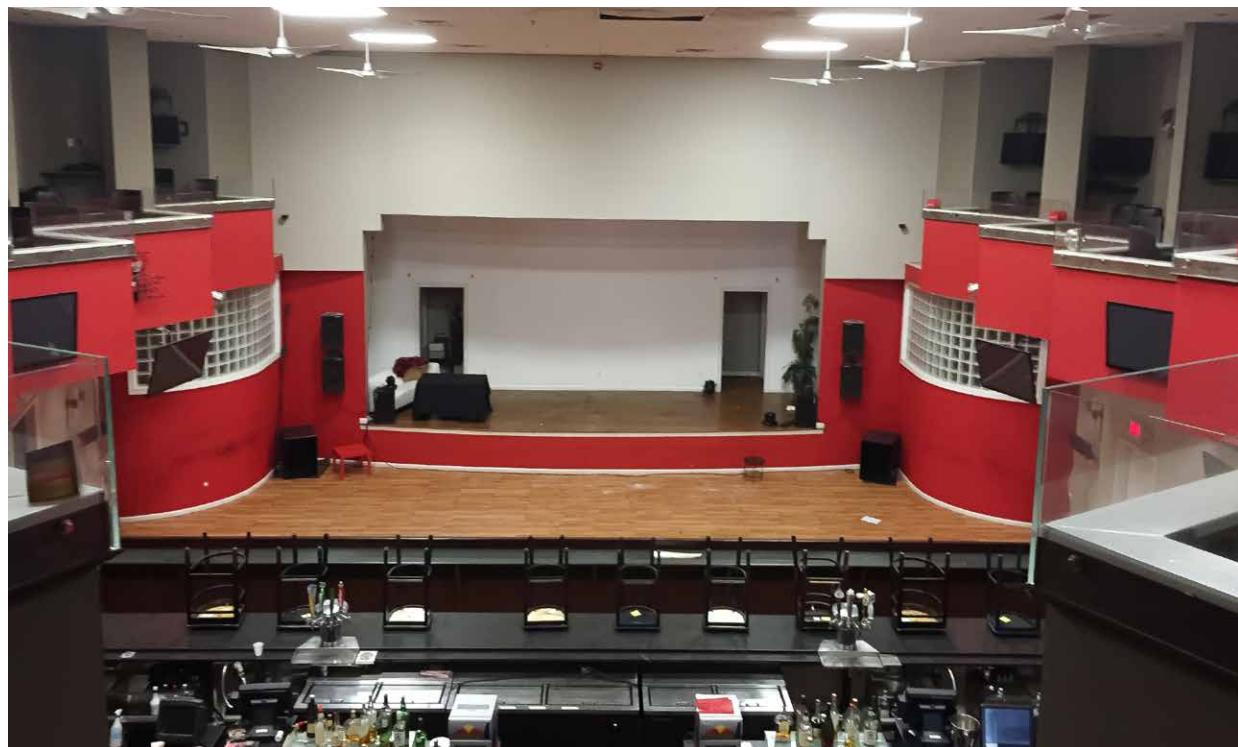
Space 1B - Turnkey Restaurant Space Available



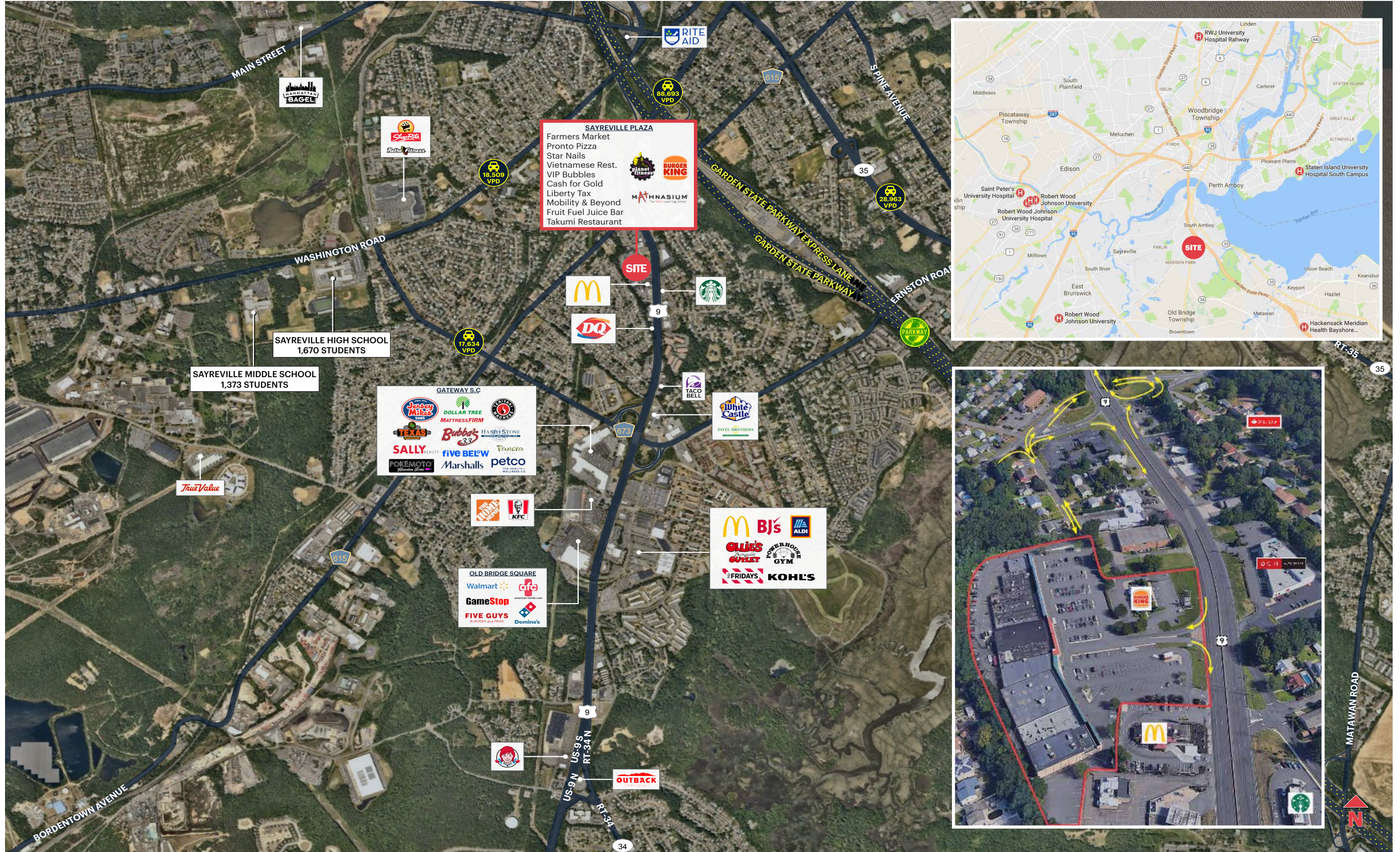
Space 10 - Fully Equipped Hair Salon; Move In Ready



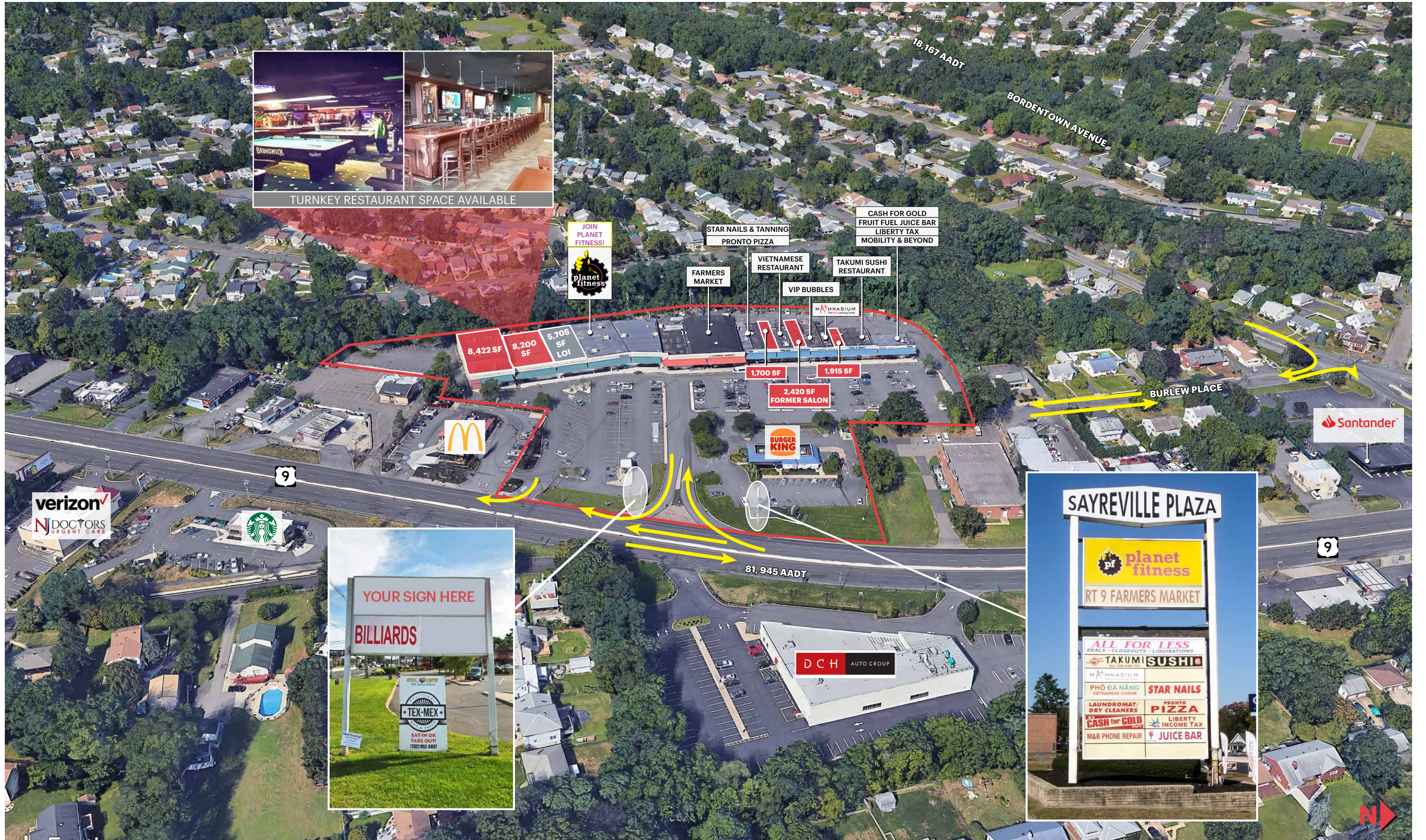
SPACE 1A - 8,422 SF ENTERTAINMENT/EVENT/RESTAURANT SPACE



MARKET AERIAL



LOW LEVEL AERIAL



SITE PHOTOS

SPACE 1A (ENTERTAINMENT / EVENT / RESTAURANT SPACE) - 8,422 SF



SPACE 2 - 5,705 SF - LOI



SPACE 10 (FULLY EQUIPPED HAIR SALON)
2,420 SF



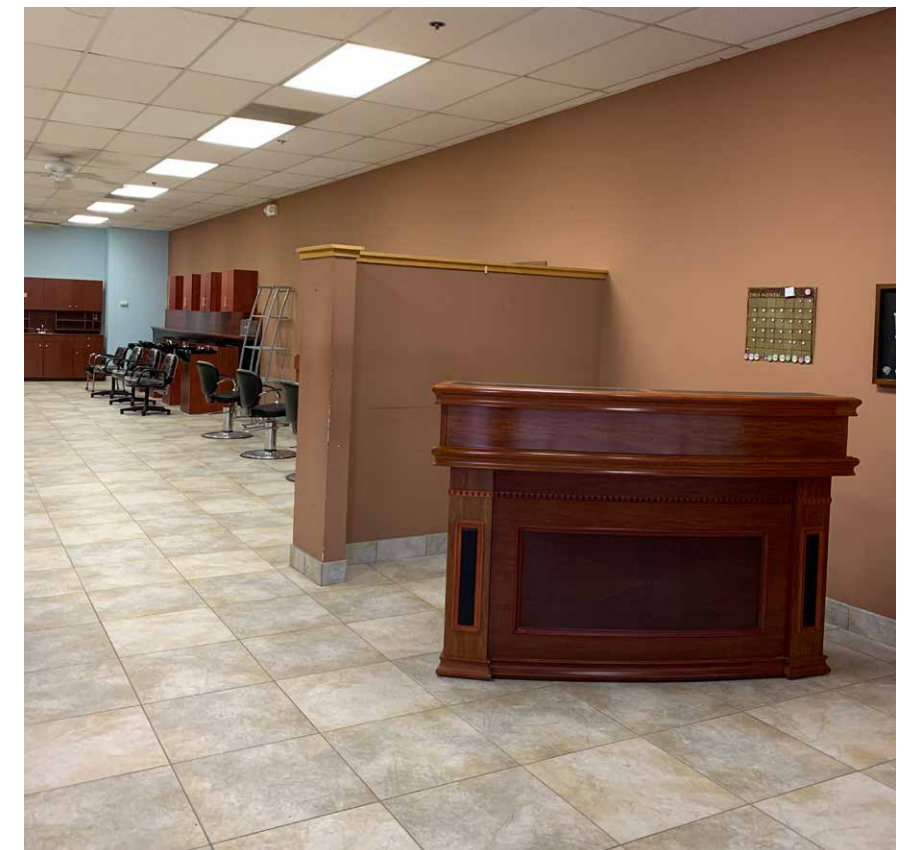
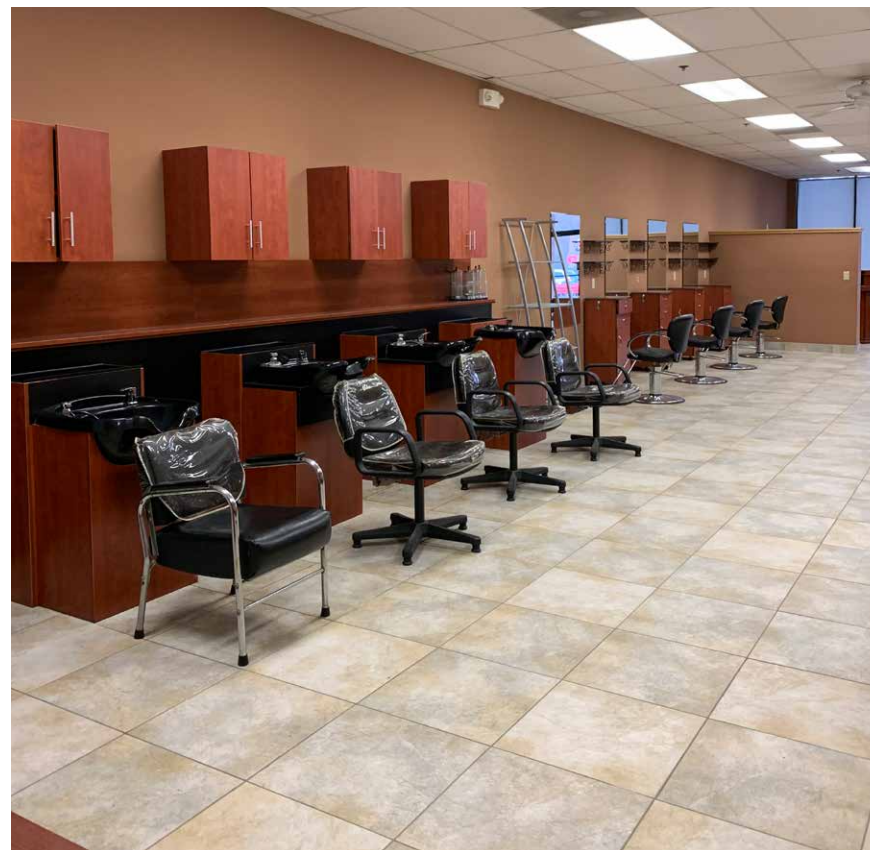
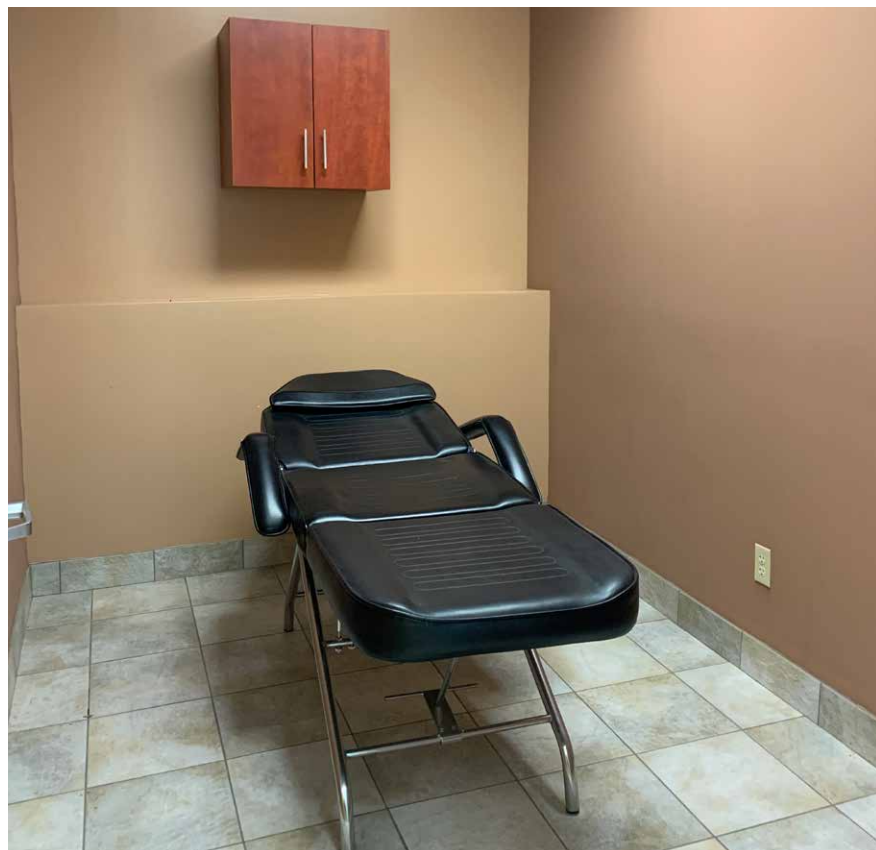
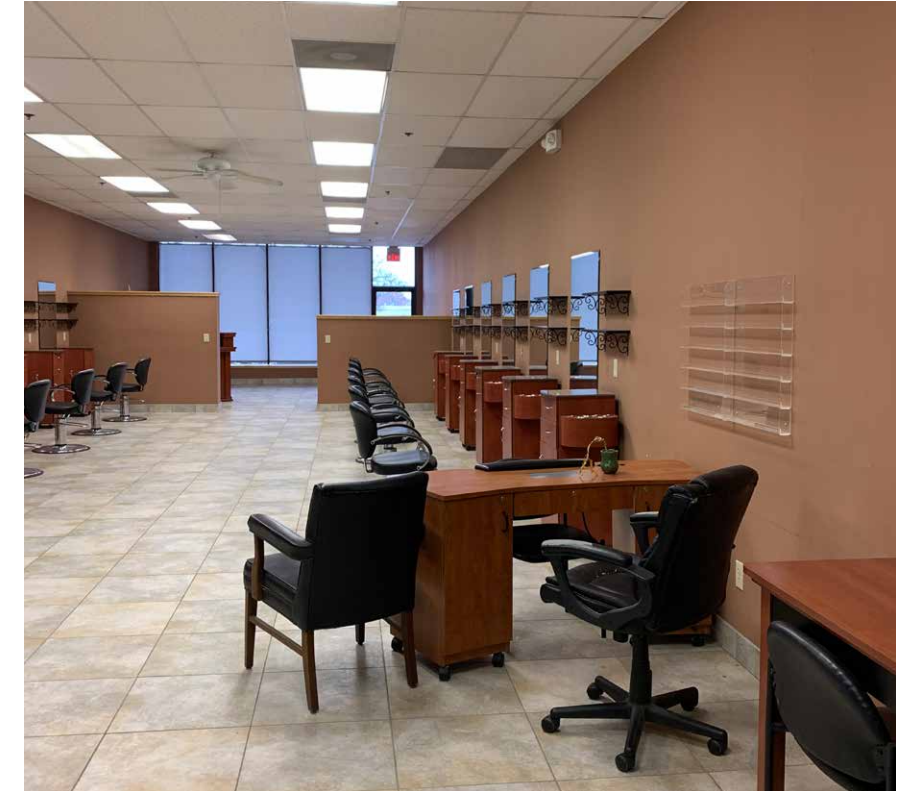
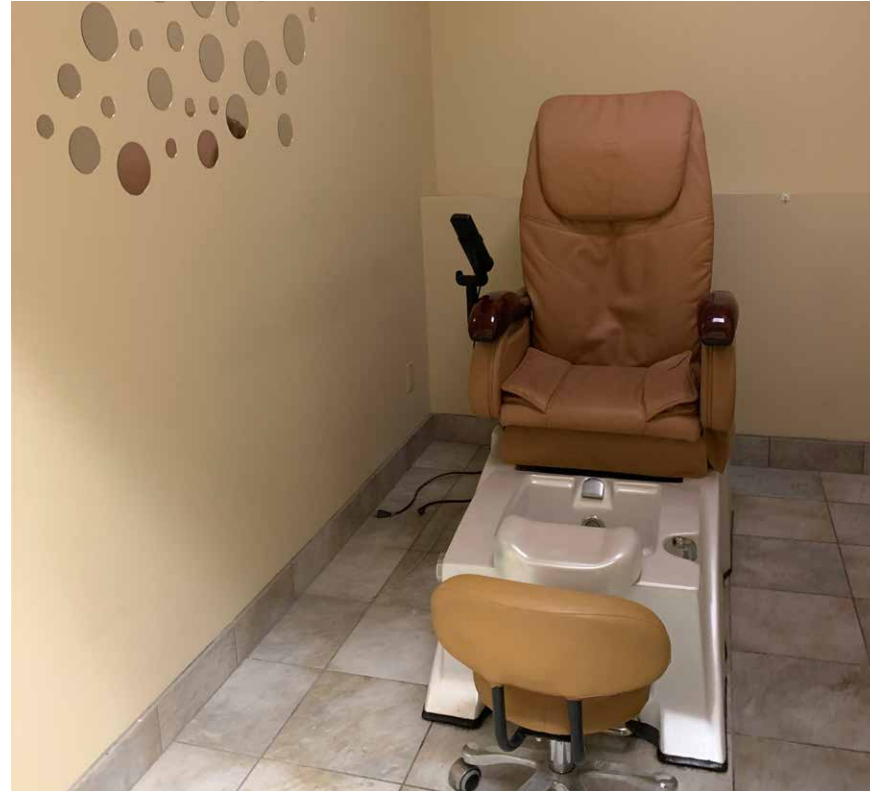
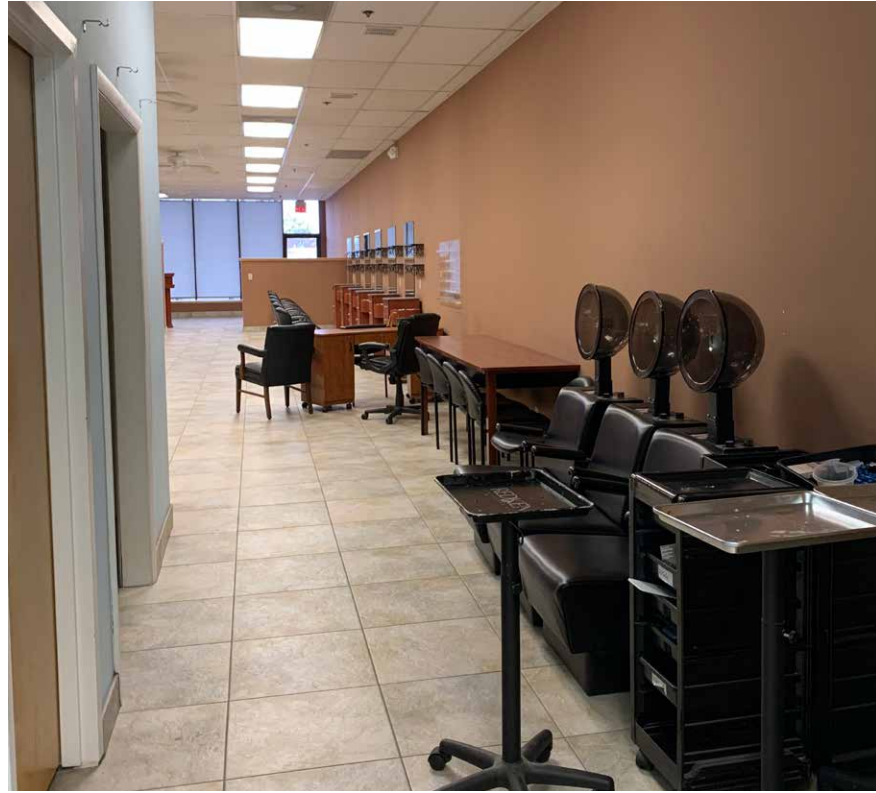
SPACE 1B (FORMER RESTAURANT) - 8,200 SF



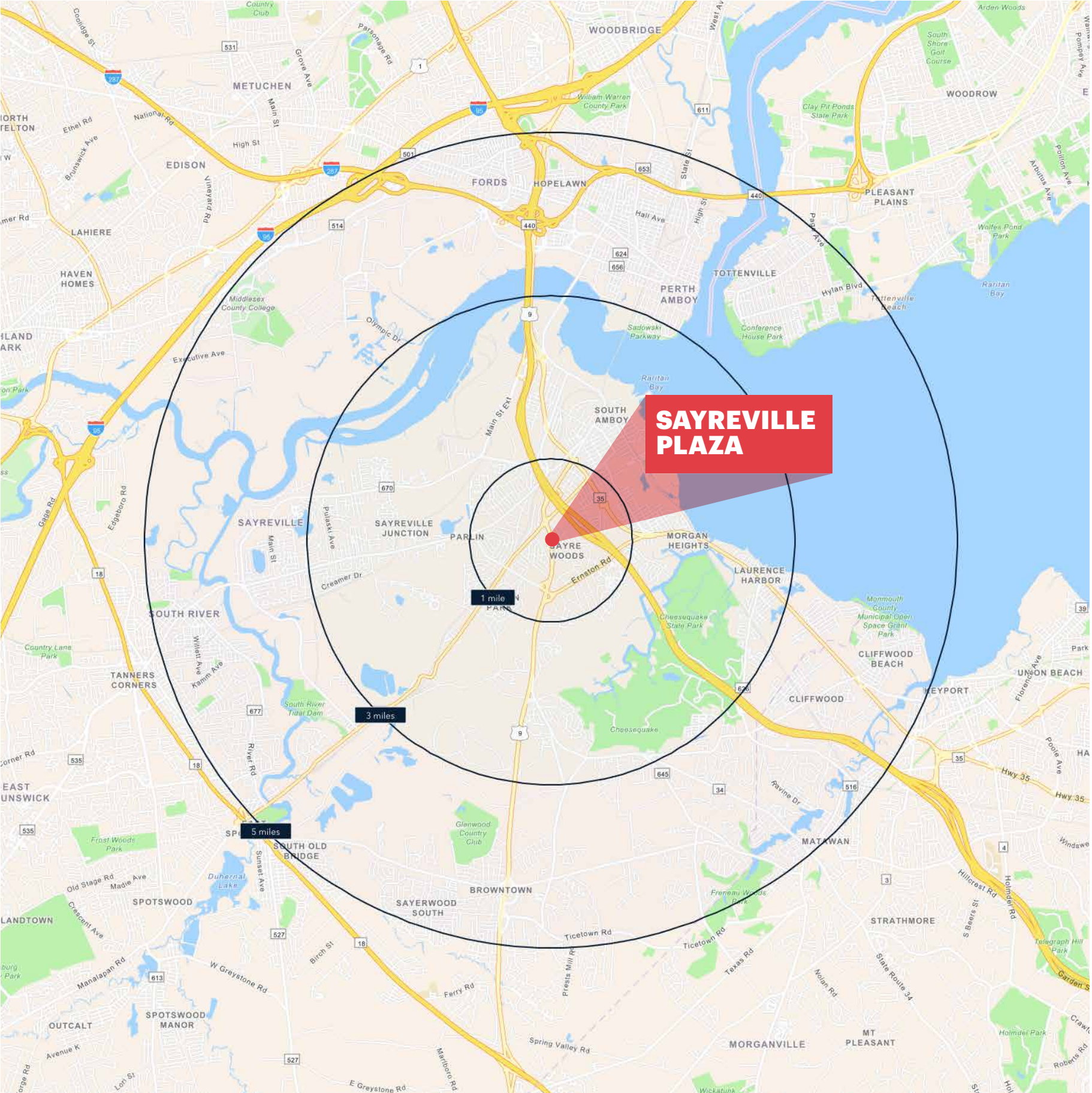
SPACE 13A - 1,915 SF



INTERIOR PHOTOS - FULLY EQUIPPED HAIR SALON - SPACE 10



AREA DEMOGRAPHICS



1 MILE RADIUS

POPULATION
14,975
HOUSEHOLDS
5,644
MEDIAN AGE
42.7
COLLEGE GRADUATES (Bachelor's +)
34%

TOTAL BUSINESSES
417
TOTAL EMPLOYEES
4,897
TOTAL DAYTIME POPULATION
11,456
AVERAGE HOUSEHOLD INCOME
\$138,426

3 MILE RADIUS

POPULATION
72,548
HOUSEHOLDS
26,764
MEDIAN AGE
40.6
COLLEGE GRADUATES (Bachelor's +)
33%

TOTAL BUSINESSES
1,797
TOTAL EMPLOYEES
21,845
TOTAL DAYTIME POPULATION
56,578
AVERAGE HOUSEHOLD INCOME
\$117,755

5 MILE RADIUS

POPULATION
213,737
HOUSEHOLDS
78,248
MEDIAN AGE
39.6
COLLEGE GRADUATES (Bachelor's +)
33%

TOTAL BUSINESSES
5,929
TOTAL EMPLOYEES
74,560
TOTAL DAYTIME POPULATION
178,579
AVERAGE HOUSEHOLD INCOME
\$118,421

*2024 estimates

TURNAROUNDS AND ACCESS MAP



CONTACT EXCLUSIVE AGENTS

FLORIAN SUSERMAN
fsuserman@ripconj.com
201.777.2301

SAMANTHA ZAWADZKI
szawadzki@ripconj.com
201.256.0542