



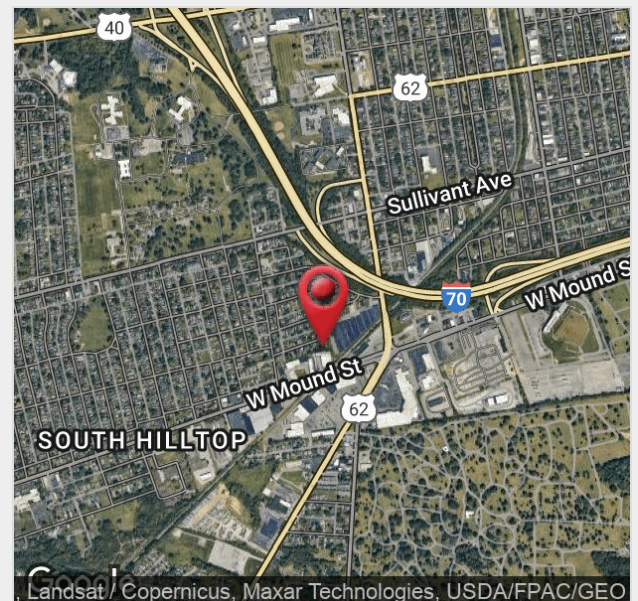
1516 West Mound Street

1516 West Mound Street, Columbus, Ohio 43223

Property Features

- Up To 14,992 SF Available for Lease
- Unit A - 6,850 SF with 1,000 SF Showroom, 3 RRs
- Unit B - 8,142 SF with One Restroom with Office Space
- Asking \$8.50 PSF for 14,992 SF
- Range of SF Options to Accommodate Tenants
- Spaces are Connected by a Garage Door
- All Auto Uses Permitted
- Two Large Bay Areas facing Mound St.
- Automatic Garage Doors with Two 9' Drive in Doors
- Approximately 10% Office / Showroom in Each Space

Lease Rate: \$8.50 SF/Yr (NNN)



For more information:

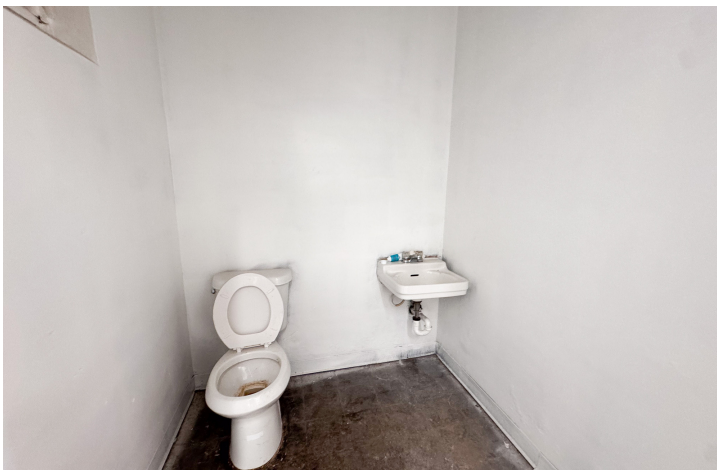
John Mally

614 629 5254 • jmally@ohioequities.com

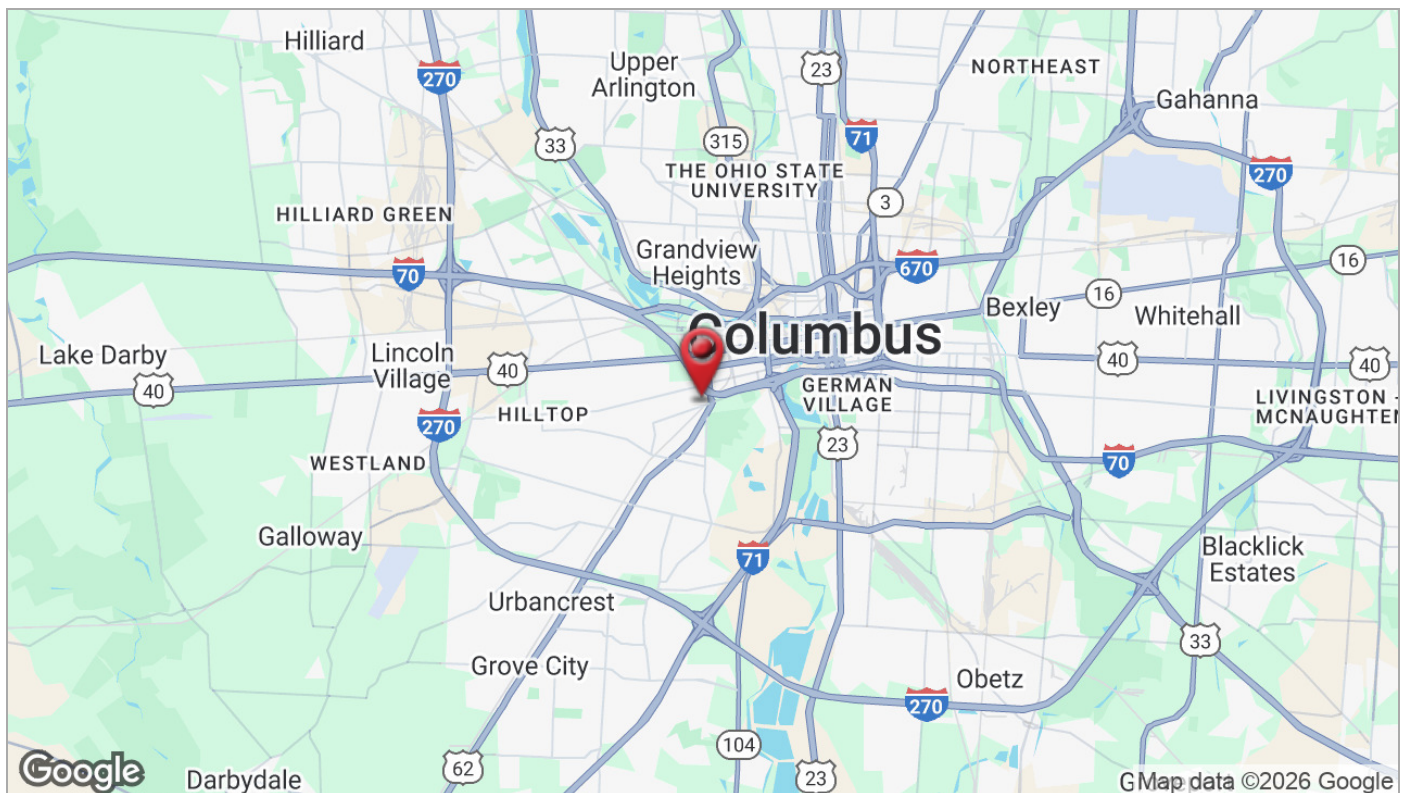
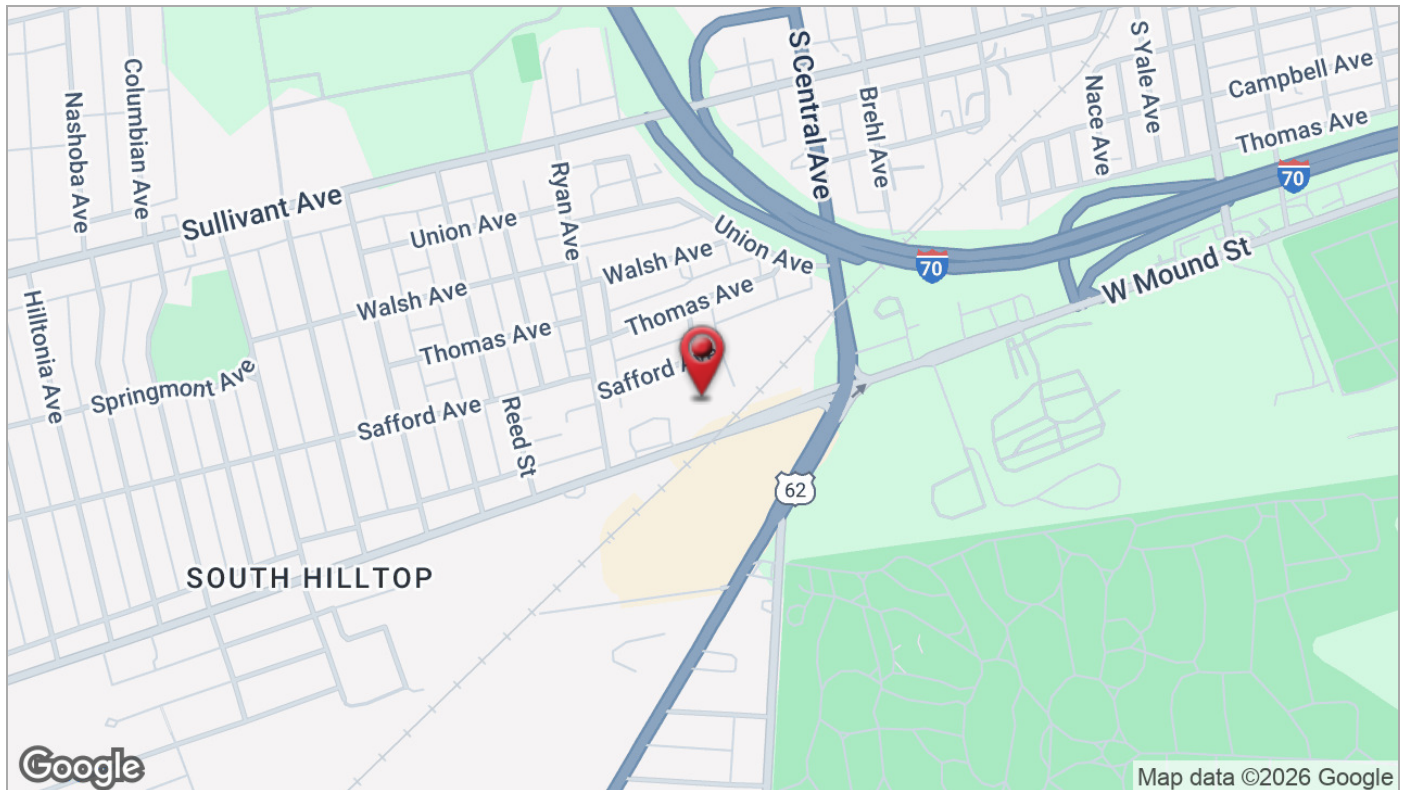
Andrew Green

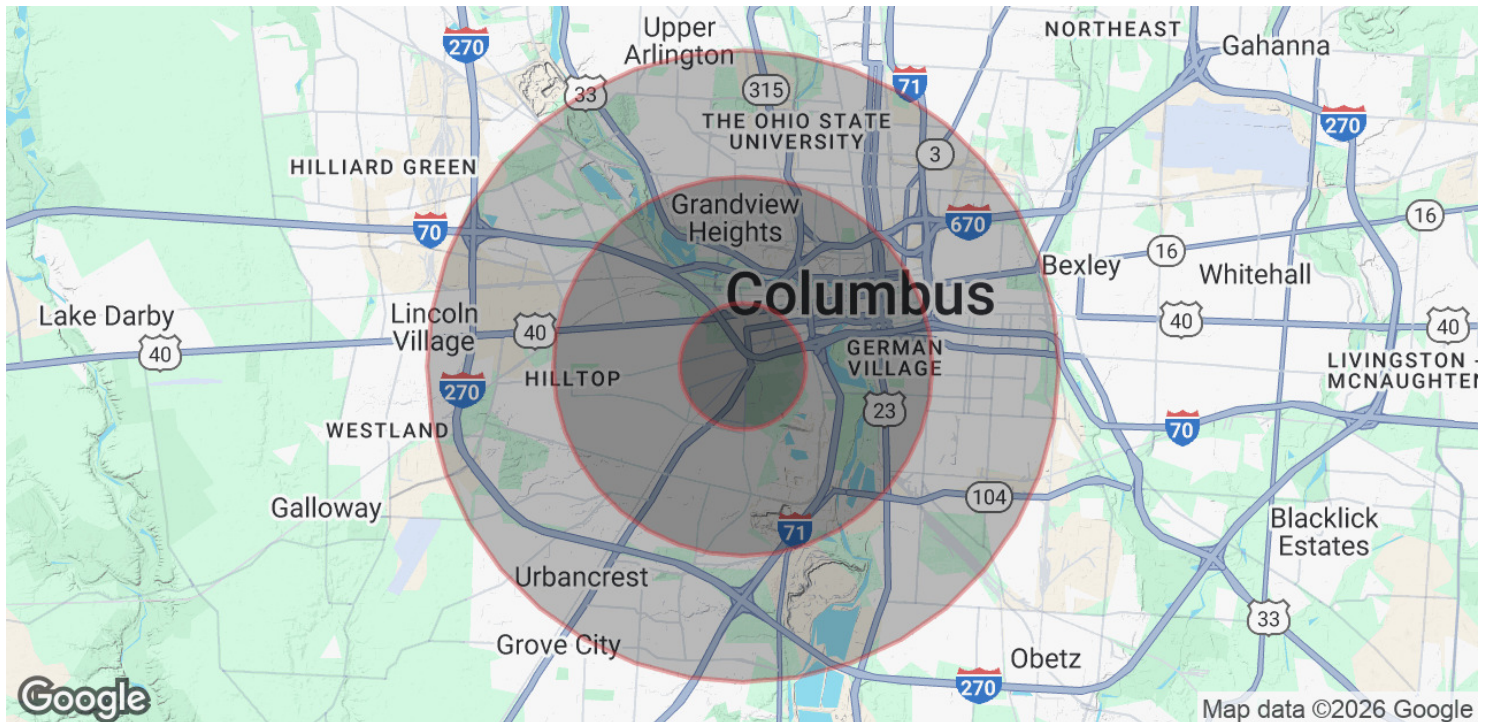
614 629 5232 • agreen@ohioequities.com











POPULATION

	1 MILE	3 MILES	5 MILES
Total Population	13,120	115,714	327,741
Average Age	37	38	36
Average Age (Male)	36	37	35
Average Age (Female)	37	38	36

HOUSEHOLDS & INCOME

	1 MILE	3 MILES	5 MILES
Total Households	4,977	52,275	139,434
# of Persons per HH	2.6	2.2	2.4
Average HH Income	\$50,564	\$84,959	\$82,815
Average House Value	\$155,733	\$329,308	\$320,465

Demographics data derived from AlphaMap