

# Homestead Plaza

205 - 255 CENTER ST., SEVILLE, OH 44273

# FOR LEASE

Retail Property



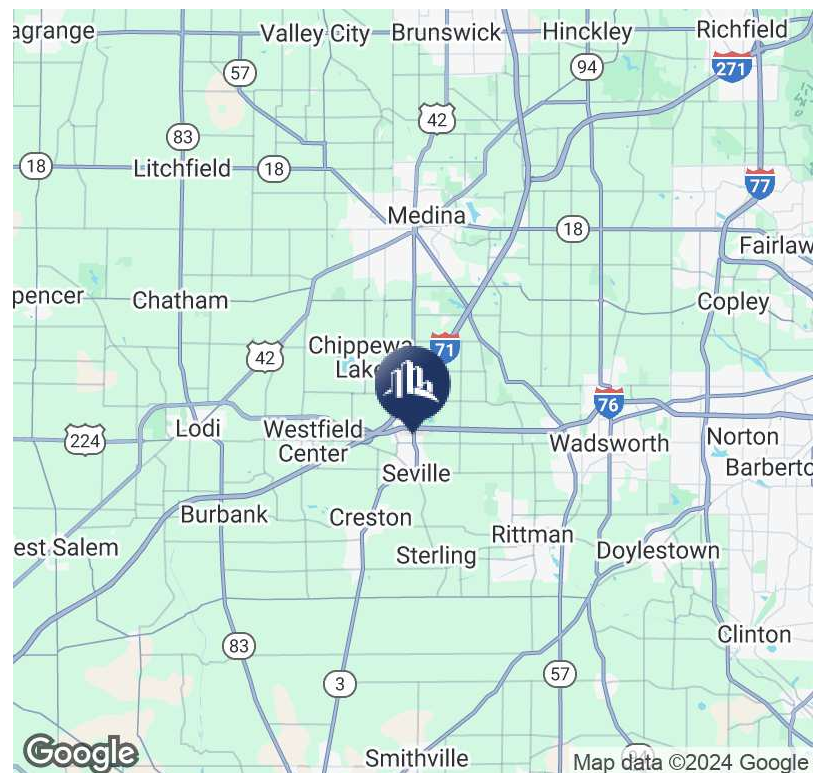
## PROPERTY DESCRIPTION

One retail spaces left for lease located in highly visible Homestead Plaza. Suite 255 is 3000 SF and includes reception area, large bull pen, open space, 4 private offices, kitchenette, storage and two restrooms. Property fronts busy Center St./SR 3.

## LOCATION DESCRIPTION

1 mile East of I-71 and 1/2 mile South of the I-76/SR-3 interchange in the Village of Seville. Good visible corner location near traffic light with easy access to Akron, Columbus, Cleveland, Canton, Medina and two major airports. Good residential density nearby.

SPACES	LEASE RATE	SPACE SIZE
255	\$14.00 SF/yr	3,000 SF



**Valeria Long**  
ADVISOR  
216.293.8900 x4  
valeria.long@sperrycga.com  
OH #SAL.2022003074

**Steve Masica**  
PRINCIPAL  
330.714.4415  
steve.masica@sperrycga.com  
OH #2013002150

**Michelle Masica**  
PRINCIPAL/BROKER  
216.293.8900 x1  
michelle.masica@sperrycga.com  
OH #2019006823

Each office independently owned and operated.

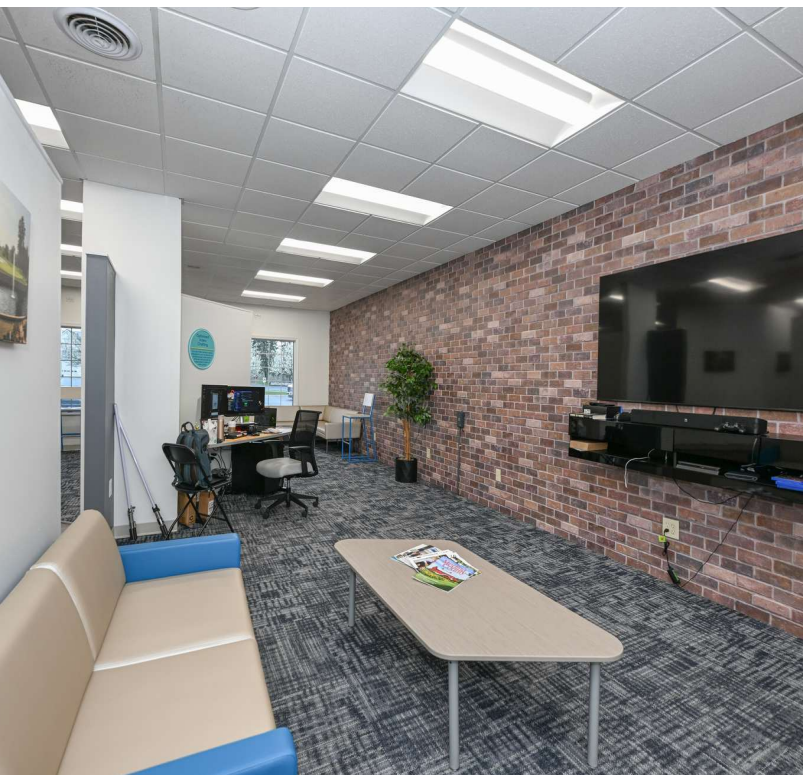
We obtained the information above from sources we believe to be reliable. However, we have not verified its accuracy and make no guarantee, warranty or representation about it. It is submitted subject to the possibility of errors, omissions, change of price, rental or other conditions, prior sale, lease or financing, or withdrawal without notice. We include projections, opinions, assumptions or estimates for example only, and they may not represent current or future performance of the property. You and your tax and legal advisors should conduct your own investigation of the property and transaction.

# Homestead Plaza

205 - 255 CENTER ST., SEVILLE, OH 44273

# FOR LEASE

Retail Property



**Valeria Long**  
ADVISOR  
216.293.8900 x4  
valeria.long@sperrycga.com  
OH #SAL.2022003074

**Steve Masica**  
PRINCIPAL  
330.714.4415  
steve.masica@sperrycga.com  
OH #2013002150

**Michelle Masica**  
PRINCIPAL/BROKER  
216.293.8900 x1  
michelle.masica@sperrycga.com  
OH #2019006823

Each office independently owned and operated.

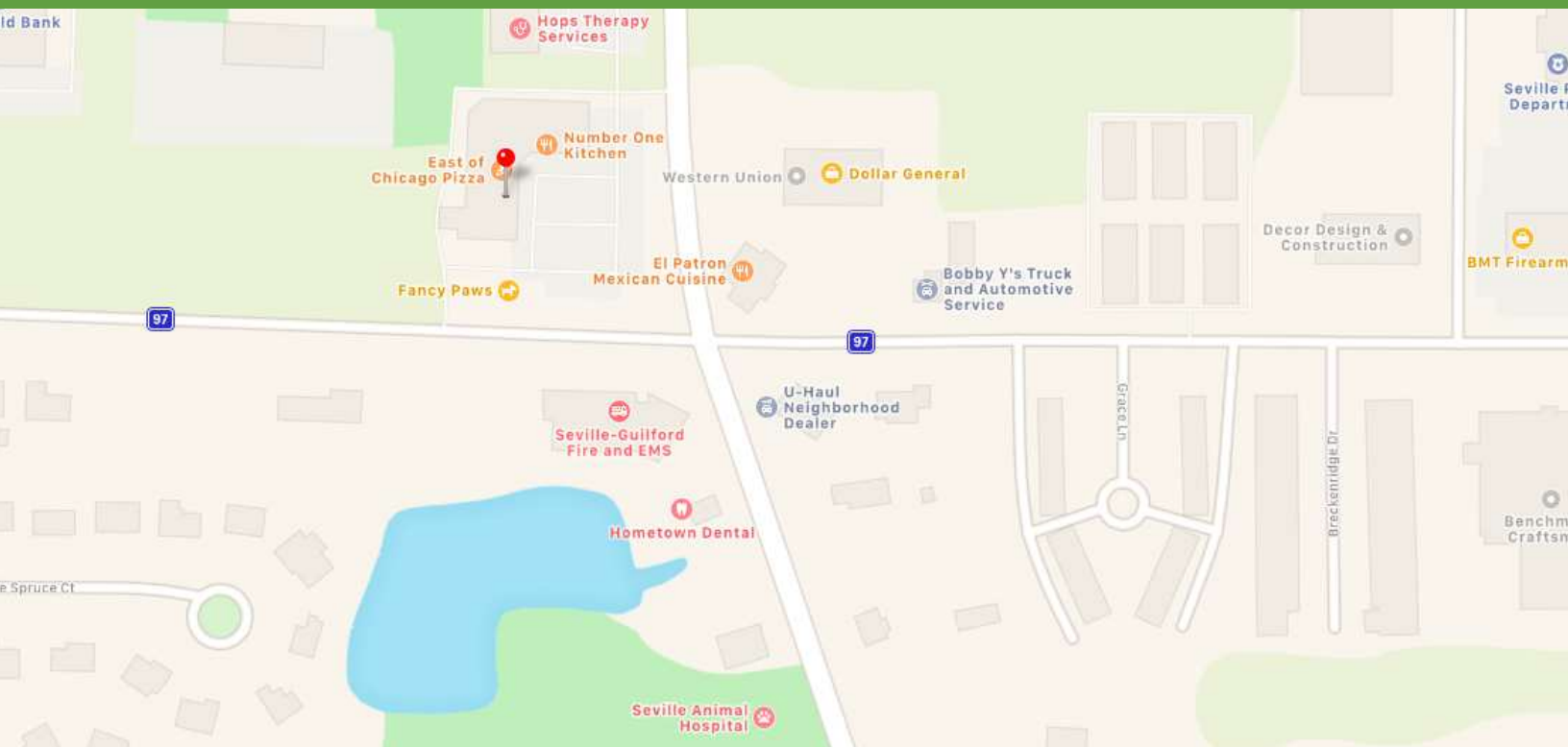
We obtained the information above from sources we believe to be reliable. However, we have not verified its accuracy and make no guarantee, warranty or representation about it. It is submitted subject to the possibility of errors, omissions, change of price, rental or other conditions, prior sale, lease or financing, or withdrawal without notice. We include projections, opinions, assumptions or estimates for example only, and they may not represent current or future performance of the property. You and your tax and legal advisors should conduct your own investigation of the property and transaction.

# Homestead Plaza

205 - 255 CENTER ST., SEVILLE, OH 44273

# FOR LEASE

Retail Property

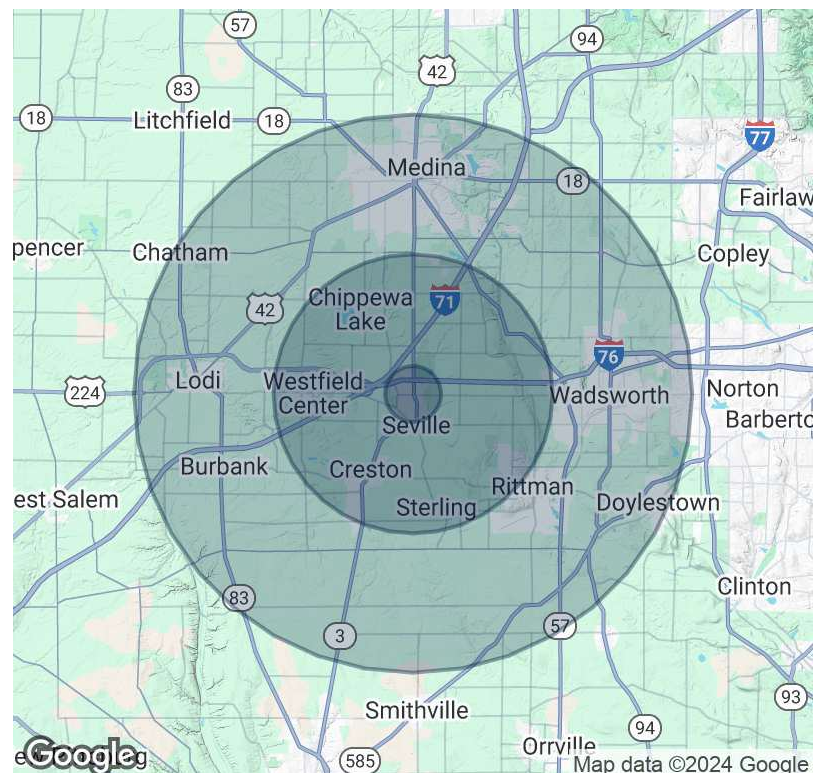


POPULATION	1 MILE	5 MILES	10 MILES
Total Population	681	16,837	120,888
Average age	42.6	41.7	39.1
Average age (Male)	41.3	41.5	38.0
Average age (Female)	43.2	41.8	40.1

HOUSEHOLDS & INCOME	1 MILE	5 MILES	10 MILES
Total households	262	6,306	45,723
# of persons per HH	2.6	2.7	2.6
Average HH income	\$67,010	\$78,003	\$76,009
Average house value	\$188,667	\$213,205	\$209,333

\* Demographic data derived from 2020 ACS - US Census



**Valeria Long**  
 ADVISOR  
 216.293.8900 x4  
 valeria.long@sperrycga.com  
 OH #SAL.2022003074

**Steve Masica**  
 PRINCIPAL  
 330.714.4415  
 steve.masica@sperrycga.com  
 OH #2013002150

**Michelle Masica**  
 PRINCIPAL/BROKER  
 216.293.8900 x1  
 michelle.masica@sperrycga.com  
 OH #2019006823

Each office independently owned and operated.

We obtained the information above from sources we believe to be reliable. However, we have not verified its accuracy and make no guarantee, warranty or representation about it. It is submitted subject to the possibility of errors, omissions, change of price, rental or other conditions, prior sale, lease or financing, or withdrawal without notice. We include projections, opinions, assumptions or estimates for example only, and they may not represent current or future performance of the property. You and your tax and legal advisors should conduct your own investigation of the property and transaction.