

SPACE FEATURES:

- Patient-Facing Medical Office Suite in the Nacogdoches Diagnostic Center
- In the Heart of the Hospital District on Mound St across from the Memorial Hospital Campus
- Ample Parking
- Building Directory, Pylon and Monument Signage
- Multiple Entrances / Exits



FOR MORE INFORMATION PLEASE CONTACT:

Jonathan Dunn
713-319-4467
jdunn@cpre.com

CPRE Commercial
3505 North Street
Nacogdoches, TX 75965
(936)564-2622

[www.commercial.cpre.com/
properties-lease.php](http://www.commercial.cpre.com/properties-lease.php)

PREMISES:

Approximately 1,520 SF

AVAILABILITY:

November 1, 2024

TERM:

Negotiable

GROSS RENT:

\$2,650.00/Month (Inclusive of NNNs and all Utilities other than Natural Gas Connectivity)

PARKING:

Ample Front, Side and Rear Surface Lot Parking

OFFICE LAYOUT:

Waiting Area, Reception, (3) Exam Rooms, (1) Physician Office, Lab, File Storage and (2) Restrooms

FOR LEASE

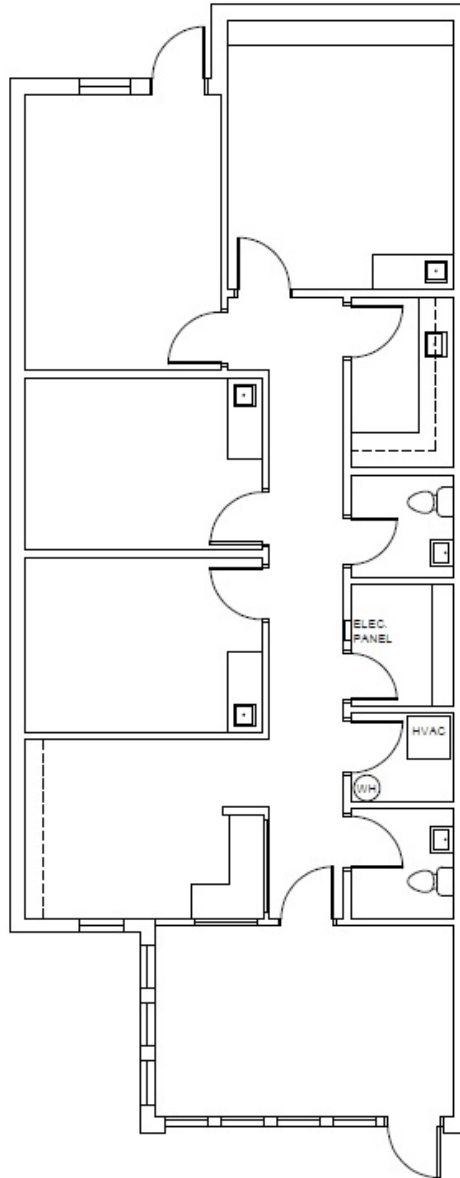
1023 N Mound Street, Suite G – Nacogdoches, TX

CPRE
COMMERCIAL



2024 CPRE Commercial This information has been obtained from sources deemed to be reliable. We have not verified it and make no guarantee, warranty or representation about it. Any projections, assumptions or estimates used are for example only and do not represent the current or future performance of the property. You and your advisors should conduct a careful, independent investigation of the property to determine to your satisfaction the suitability of the property for your needs. Photos herein are the property of their respective owners and use of these images without the express written consent of the owner is prohibited.

As-Built Floor Plan



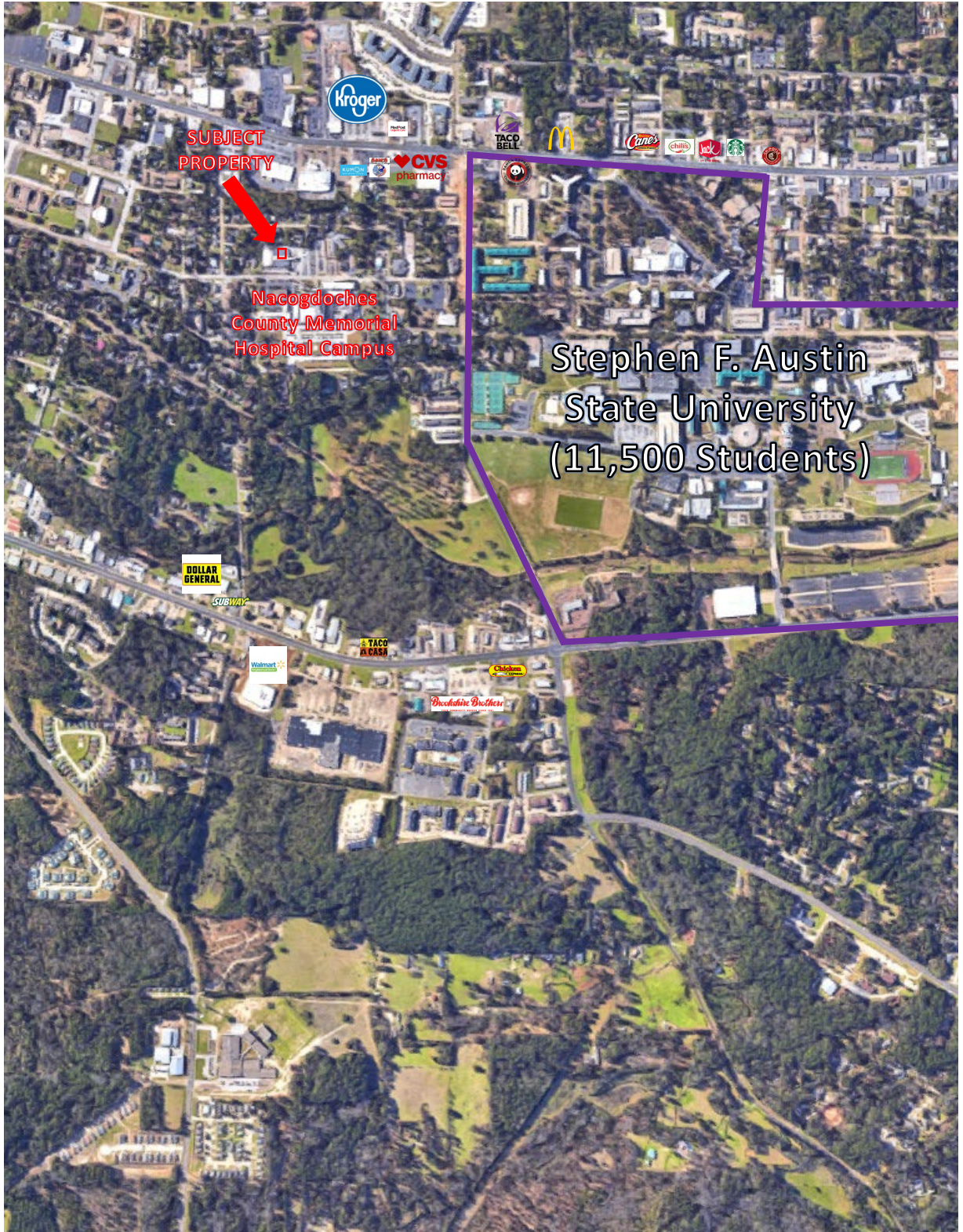
AREA: APPROX. 1,520 SF

1023 MOUND STREET SUITE G
NACOGDOCHES, TEXAS

FOR LEASE

1023 N Mound Street, Suite G – Nacogdoches, TX

CPRE
COMMERCIAL



2024 CPRE Commercial This information has been obtained from sources deemed to be reliable. We have not verified it and make no guarantee, warranty or representation about it. Any projections, assumptions or estimates used are for example only and do not represent the current or future performance of the property. You and your advisors should conduct a careful, independent investigation of the property to determine to your satisfaction the suitability of the property for your needs. Photos herein are the property of their respective owners and use of these images without the express written consent of the owner is prohibited.