

Watermark Plaza

±1,454 Square Feet Available

952 Houston Northcutt Blvd, Suite 204
Mt Pleasant, SC 29464

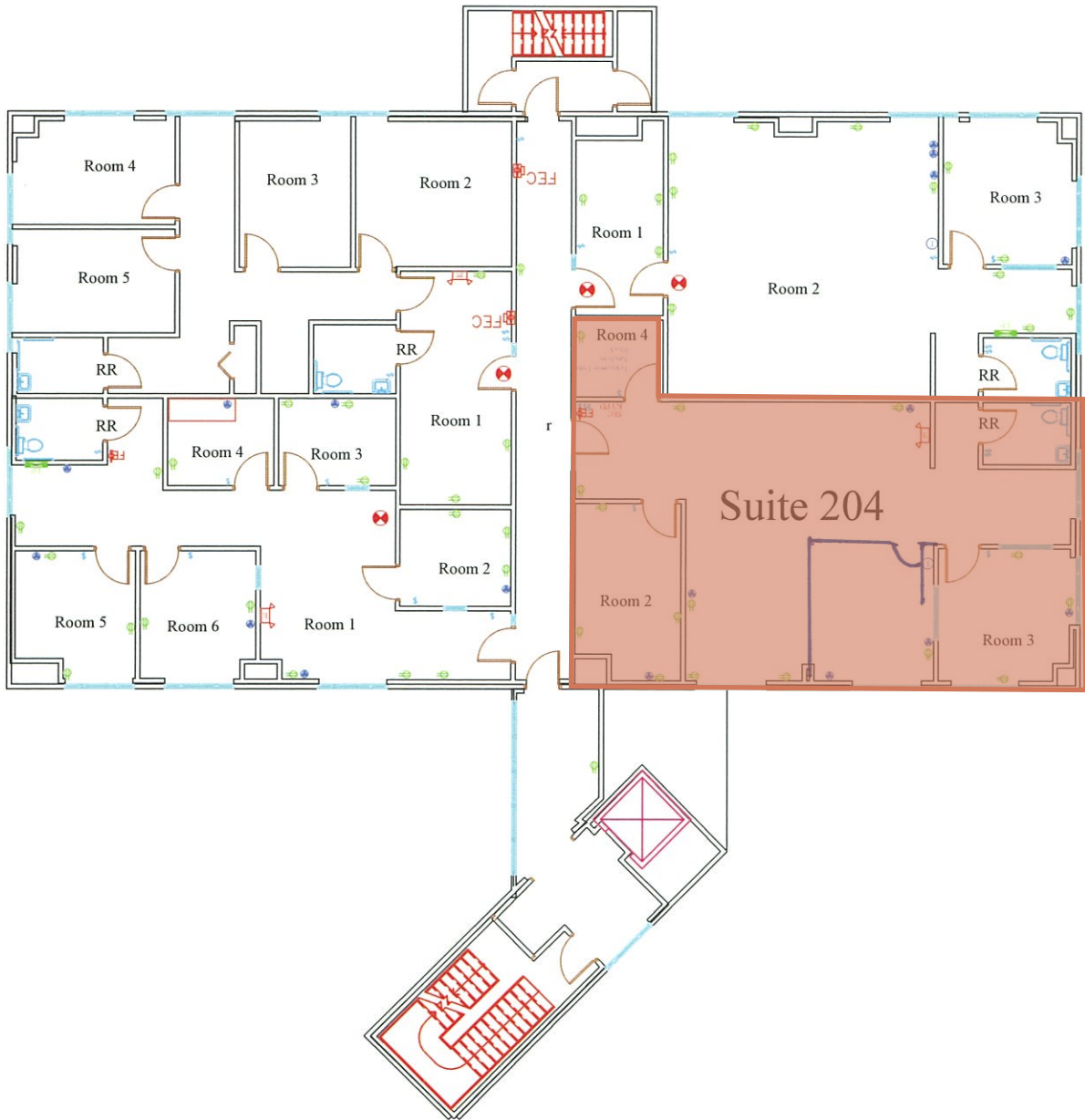
Prime Mount Pleasant Location Near the Arthur Ravenel Jr Bridge



Photos



Floor Plan



Location



952 Houston Northcut Blvd, Suite 204

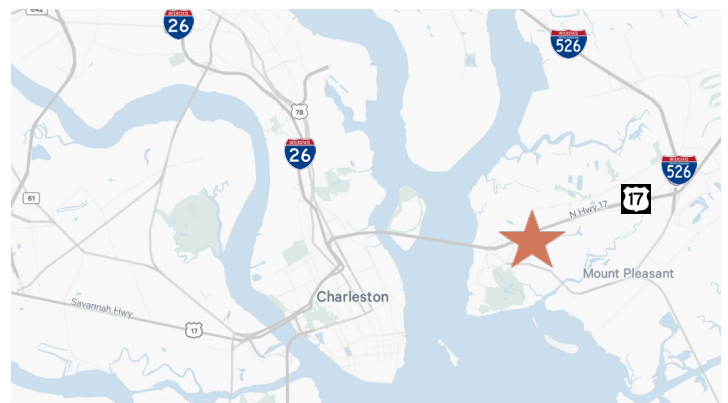
Mount Pleasant, SC 29464

For Lease

Highlights

Watermark Plaza is located in Mount Pleasant on Highway 17 just over the Arthur Ravenel Jr Bridge, minutes from Downtown Charleston.

- + Easy access to major roads including I-26, Highway 17, I-526, and Coleman Blvd
- + Ample free surface parking on-site
- + Frontage on Houston Northcutt with Lake Views
- + Conveniently located near shopping, restaurants, lodging, recreation, and more
- + Suite 204 provides an open work space, a conference room, reception area, two private offices, kitchen and a private restroom
- + Suite has lots of windows and natural light
- + Base rent is \$32.00/sf with tenant paying utilities and janitorial
- + Tenant pays increases in taxes and insurance over base year amounts



\$32.00

Per SF, plus Utilities and Janitorial

1,454

Square Feet Available

Contact Us

Charles Carmody

Senior Vice President

+1 843 577 1155

charles.carmody@cbre.com

Ryan Carmody

Vice President

+1 843 577 1162

ryan.carmody@cbre.com

© 2026 CBRE, Inc. All rights reserved. This information has been obtained from sources believed reliable, but has not been verified for accuracy or completeness. You should conduct a careful, independent investigation of the property and verify all information. Any reliance on this information is solely at your own risk. CBRE and the CBRE logo are service marks of CBRE, Inc. All other marks displayed on this document are the property of their respective owners, and the use of such logos does not imply any affiliation with or endorsement of CBRE. Photos herein are the property of their respective owners. Use of these images without the express written consent of the owner is prohibited.