

± 12.66 ACRES MID-PINELLAS

FOR SALE OR BUILD-TO-SUIT



## LAND FEATURES

Approx. ± 12.66 GR AC / 9 AC Usable

Approx. 1,000 lineal ft of frontage on Belcher Road

Parcel Number: 19-30-16-00000-130-0100

Zoning: M-1

Future Land Use: IL

Flood Zone: X

Development Opportunity

Price: \$3,500,000



### CONTACT

(813) 810 - 5135

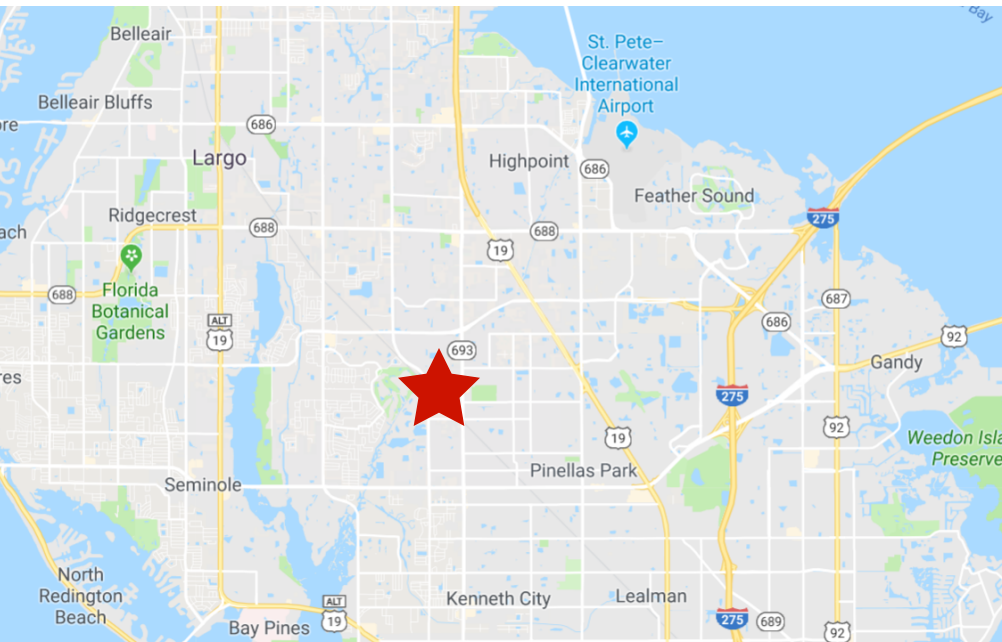
[Bruce@VaughanCRE.com](mailto:Bruce@VaughanCRE.com)

[info@VaughanCRE.com](mailto:info@VaughanCRE.com)

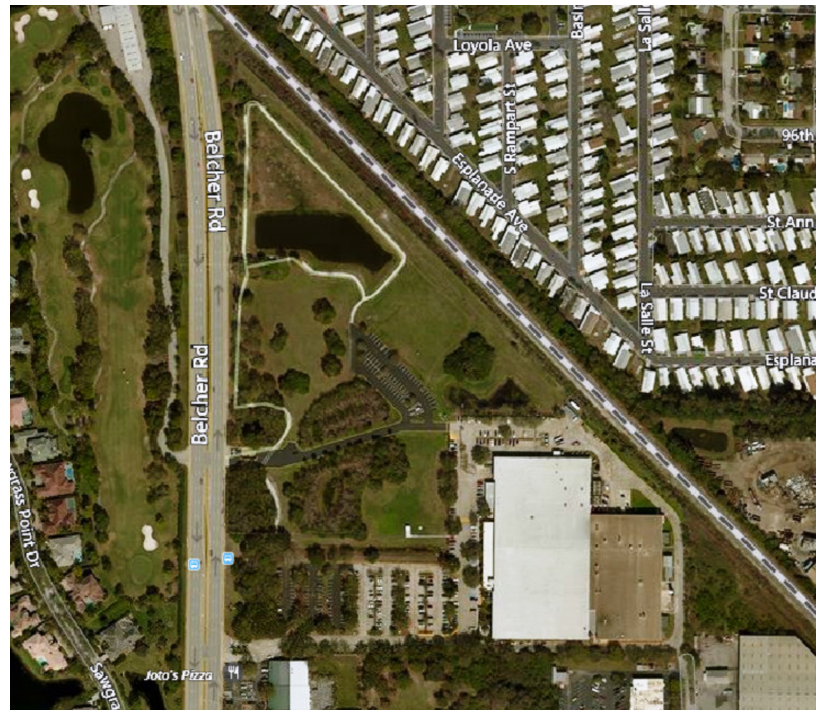
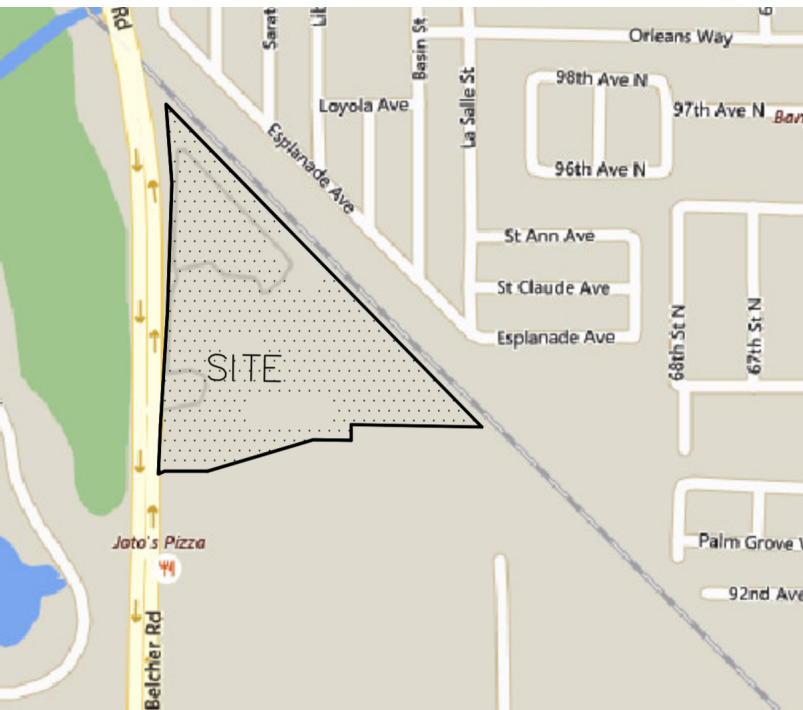
6202 Benjamin Road, Suite 105  
Tampa, FL 33634

# BELCHER RD NORTH

PINELLAS PARK, FL 33782



Centrally located in the business friendly City of Pinellas Park, this development parcel is one of the few remaining large sites available for development within mid Pinellas County



## DISTANCES

<b>5 mi</b>	St. Pete/Clearwater Airport
<b>15.2 mi</b>	Downtown St. Petersburg
<b>15.3 mi</b>	Westshore District
<b>17.1 mi</b>	Tampa International Airport
<b>20 mi</b>	Downtown Tampa

### Vaughan Commercial Advisors, LLC

6202 Benjamin Road, Suite 105  
Tampa, FL 33634

### Bruce Vaughan, SIOR CCIM

Bruce@VaughanCRE.com  
(813) 810 5135

### Emily Owens

Emily@VaughanCRE.com  
(407) 448 8207

