
INDUSTRIAL/FLEX BUILDING

AVAILABLE FOR SALE

± 4,816 SF INDUSTRIAL SPACE

± 3,873 SF OFFICE/RESIDENTIAL SPACE

3272 S 147TH PL
GILBERT, ARIZONA 85297

VACANT
READY FOR
MOVE-IN



MATT ZACCARDI
D: 480.966.7625
M: 602.561.1339
Mzaccardi@cpi.az.com



COMMERCIAL PROPERTIES INC.

Locally Owned. Globally Connected. CRFAC

TEMPE: 2323 W. University Drive, Tempe, AZ 85281 | 480.966.2301
SCOTTSDALE: 8777 N. Gainey Center Dr., Suite 245, Scottsdale, AZ 85258 | www.cpi.az.com

±8,689 SF TOTAL MULTI-TENANT INDUSTRIAL/FLEX BUILDING IN GILBERT, AZ



About the Property

ADDRESS

3272 S 147th Pl
Gilbert, AZ 85297

SALE PRICE

\$1,895,000 (\$218/SF)

INDUSTRIAL SIZE

±4,816 SF

OFFICE SIZE

±3,873 SF

ZONING

C-BP

YEAR BUILT

1998

YEAR REMODELED

2021

PARCEL

304-54-040

CLEAR HEIGHT

9-18 FT

YARD

±7,416 SF

POWER

400 AMP Service, 120-240V

The information contained herein has been obtained from various sources. We have no reason to doubt its accuracy; however, J & J Commercial Properties, Inc. has not verified such information and makes no guarantee, warranty or representation about such information. The prospective buyer or lessee should independently verify all dimensions, specifications, floor plans, and all information prior to the lease or purchase of the property. All offerings are subject to prior sale, lease, or withdrawal from the market without prior notice.

12.12.24

Property Photos



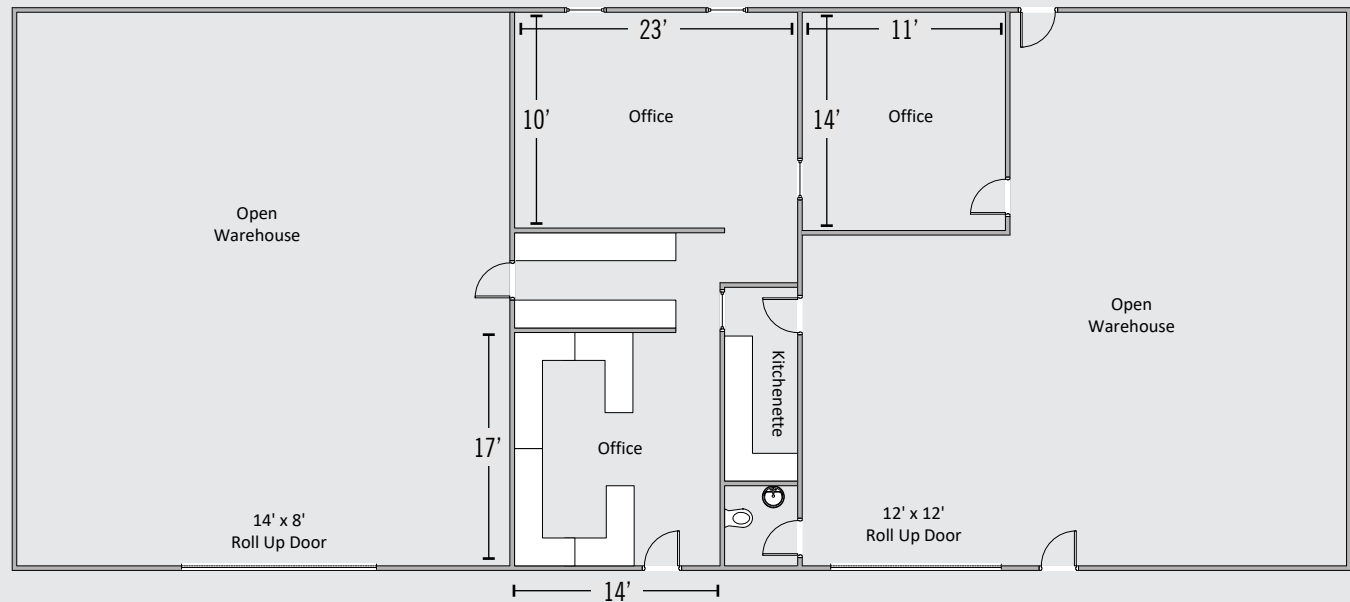
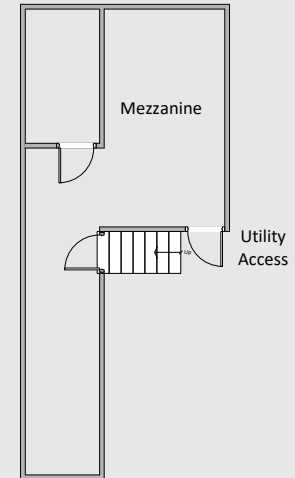
Property Photos



Floor Plan

INDUSTRIAL LAYOUT

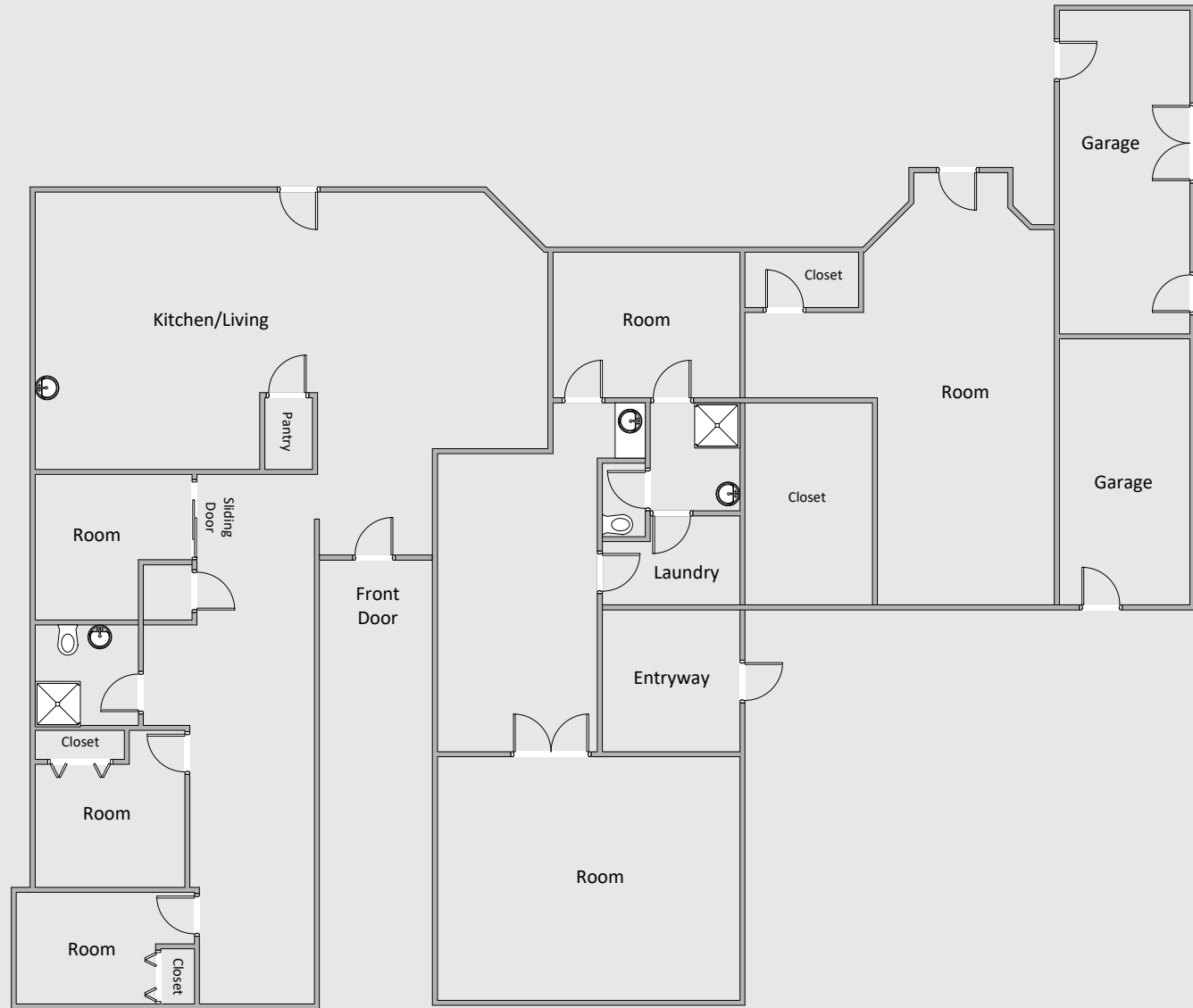
- ±4,816 SF Industrial Space
- Two Open Bays
- 12x12 and 14x8 Roll Up Doors
- 100% HVAC
- ±1,128 SF of Office Space on First Floor and ±456 SF of Mezzanine Office



Floor Plan

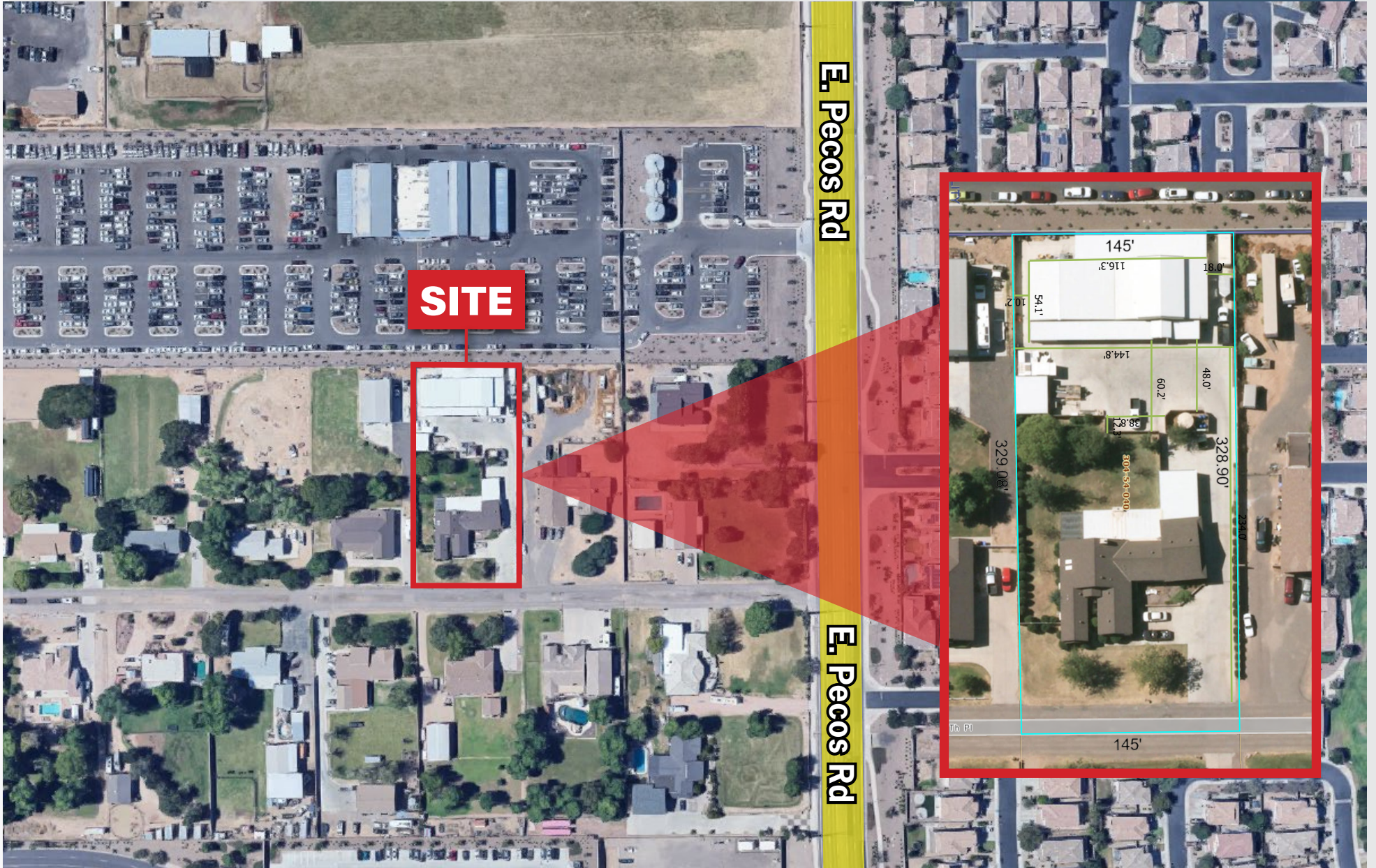
OFFICE LAYOUT

- ±3,873 SF Office Space
- 4 Offices
- Bullpen Area
- Storage/Utility Closet



±8,689 SF TOTAL MULTI-TENANT INDUSTRIAL/FLEX BUILDING IN GILBERT, AZ

Site Plan



±8,689 SF TOTAL MULTI-TENANT INDUSTRIAL/FLEX BUILDING IN GILBERT, AZ

About the Area

