

900 — ON — NINE

WOODBRIIDGE, NJ

LOCATED AT THE CROSSROADS OF NEW JERSEY

FEATURES

- 112,705 SF, six story Class A office building
- 2nd floor available: 3,506 SF
- New ownership with a capital improvement plan
- Unit is on window line with substantial natural light
- Work letter will be provided
- Common areas being renovated
- 4.4/1,000 parking available
- Great access & visibility – located directly on Route 9
- Easy access to Garden State Parkway, New Jersey Turnpike, Route 1, Route 35 and Route 287/440
- Close proximity to restaurants and shopping

CONTACT

DOUG TWYMAN, SIOR

Licensed Broker Salesperson

+1 732 236 8899 (C)

doug.twyman@colliers.com

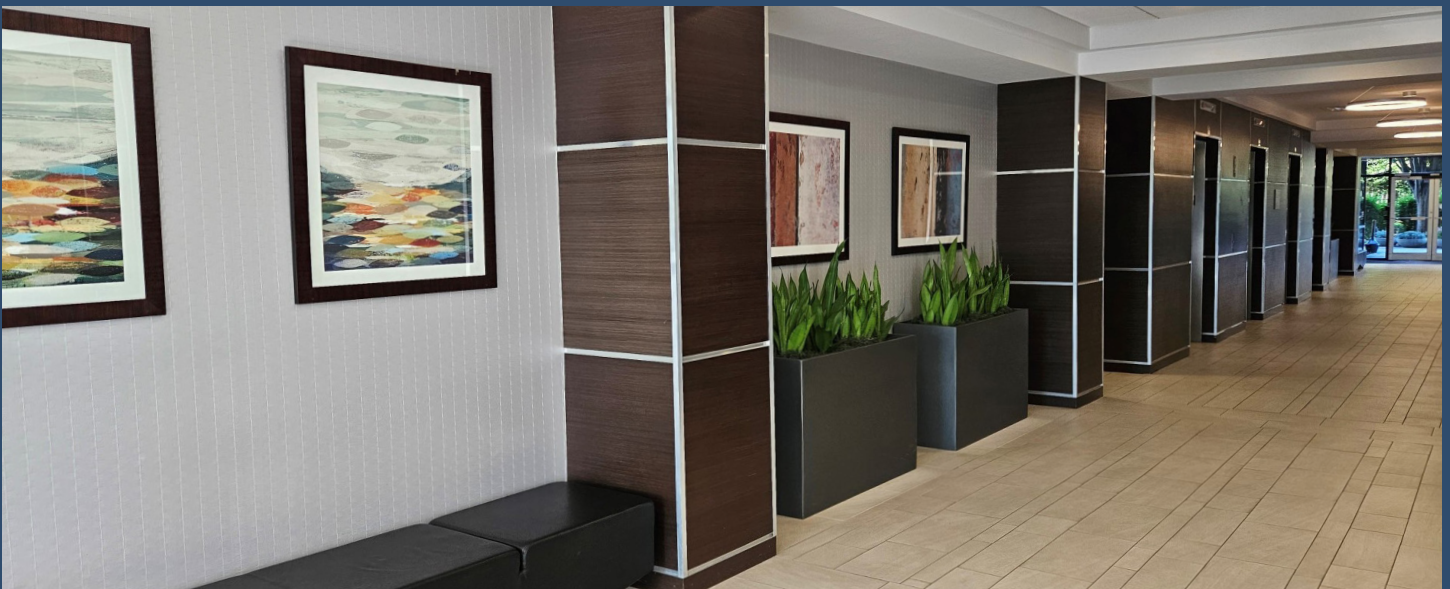
CHIDI EGESIONU

LICENSED SALESPERSON

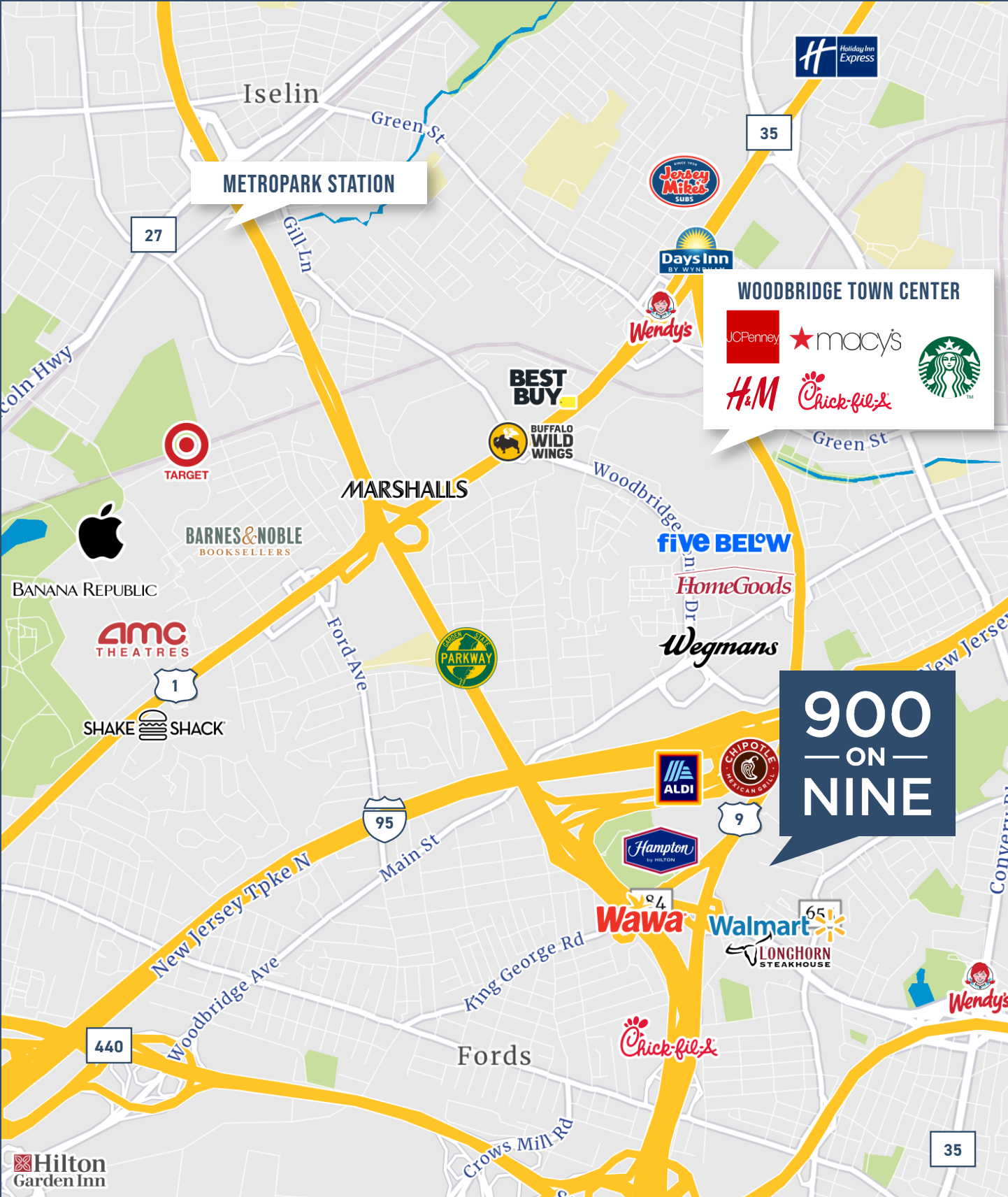
+1 732 734 0492 (D)

CHIDI.EGESIONU@COLLIERS.COM

900
— ON —
NINE



900
— ON —
NINE



METROPARK STATION

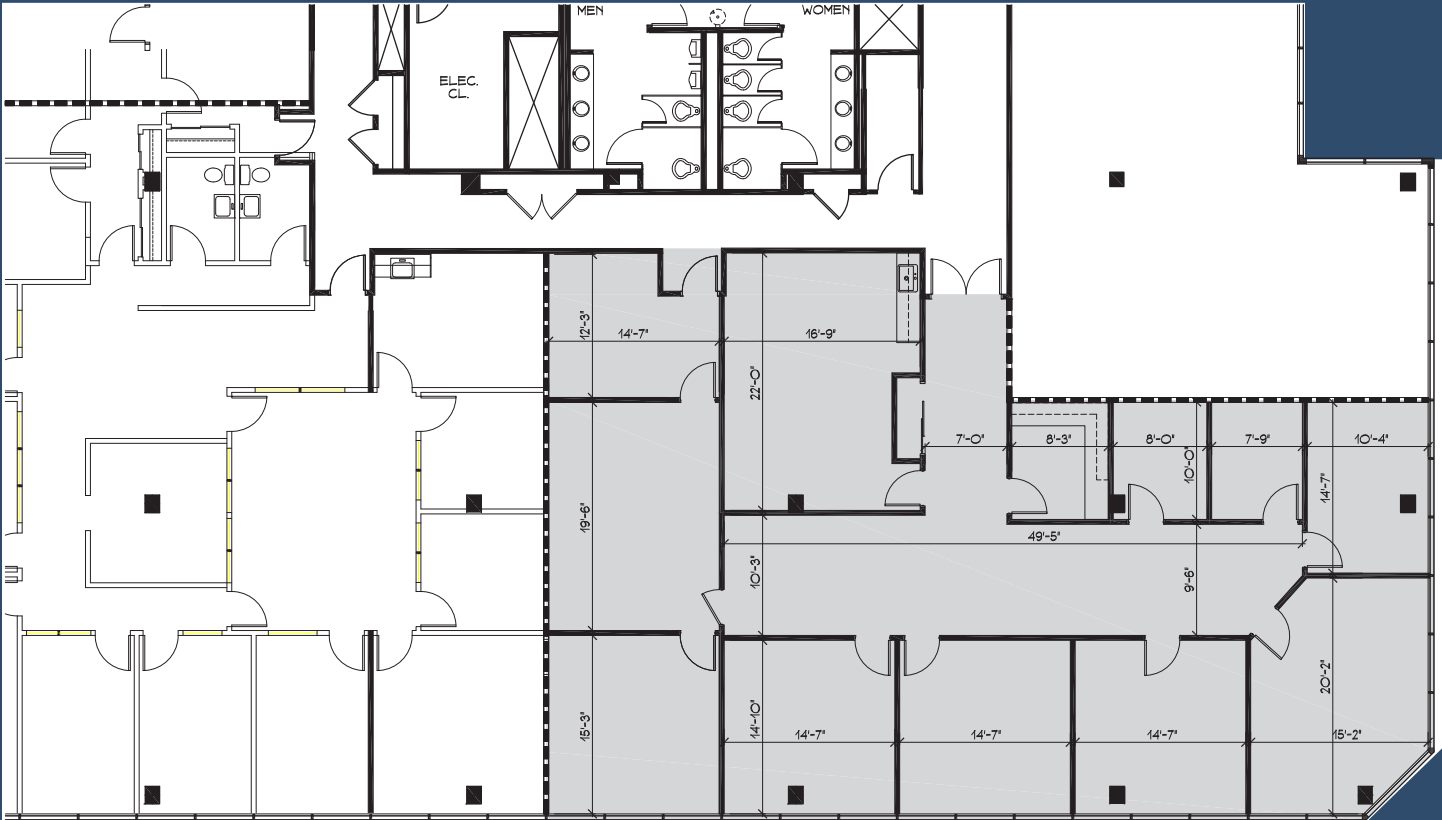
WOODBRIDGE TOWN CENTER

- JCPenney
- macy's
- Starbucks
- H&M
- Chick-fil&

900
— ON —
NINE



2ND FLOOR | 3,506 SF



900
— ON —
NINE

CONTACT

DOUG TWYMAN, SIOR
Licensed Broker Salesperson
+1 732 236 8899 [C]
doug.twyman@colliers.com

CHIDI EGESIONU
LICENSED SALESPERSON
+1 732 734 0492 [D]
CHIDI.EGESIONU@COLLIERS.COM

COLLIERS INTERNATIONAL NJ LLC
10 WOODBRIDGE CENTER DRIVE, SUITE 1010
WOODBRIDGE, NJ 07095 | U.S.
732 807 0400

No representation is made as to the accuracy of the information furnished herein and same is submitted subject to errors, omissions, change of prices, rental, or other conditions, prior sale, lease, sublease, and/or withdrawal without notice. While every attempt is made to ensure accuracy, the floor plan(s) is for guidance only. The measurements, dimensions, specifications, and other data shown are approximate and may not be to scale. We assume no responsibility for the accuracy of the floor plan(s) or for any action taken in reliance thereon. The floor plan(s) do not create any representation, warranty or contract. All parties should consult a professional, such as an architect, to verify the information contained herein. The furnishing of this information shall not be deemed a hiring. A commission in accordance with our principal's schedule of rates and conditions will be paid to the procuring Broker who executes our or our principal's brokerage agreement, subject to a fully consummated transaction upon terms and conditions acceptable to our principal. Colliers International NJ LLC