



# FOR LEASE

## 1100 Alma St

Suite 109, Menlo Park  
1360 sq. ft. Office Building



**EUGENIA SERAIA**

650.847.2041  
eseraia@ventanaps.com  
DRE# 02022599

**JOE MARTIGNETTI**

650.847.2000  
jmartignetti@ventanaps.com  
DRE# 01116935

The information contained herein has been given to us by the owner of the property or other sources we deem reliable. We have no reason to doubt its accuracy, but we do not guarantee it. All information should be verified prior to purchase or lease. No warranty or representation, expressed or implied, is made as to the accuracy of the information contained herein.

# 1100 Alma St

## SUITE 109 HIGHLIGHTS

1360 SQ FT Office Space

Available Now

Corner Space with Window Line

First Floor Office Unit

Conference Room

Four Private Offices

Easily Accessible from Highway 101, 280

and One Block from CalTrain

Walkable to Downtown Menlo Park

Virtual and In-Person Tour Available



**EUGENIA SERAIA**

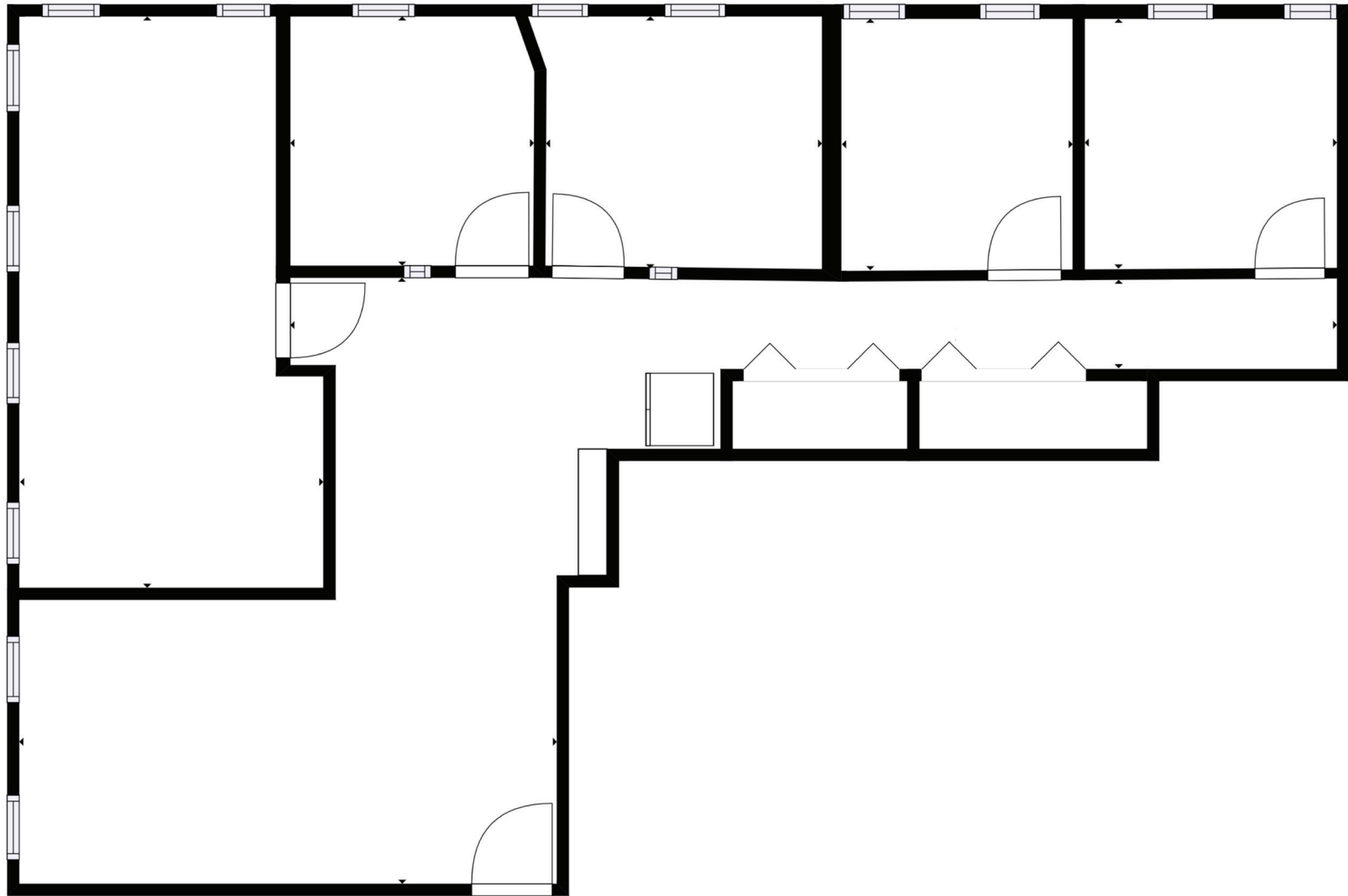
650.847.2041  
eseraia@ventanaps.com  
DRE# 02022599

**JOE MARTIGNETTI**

650.847.2000  
jmartignetti@ventanaps.com  
DRE# 01116935

The information contained herein has been given to us by the owner of the property or other sources we deem reliable. We have no reason to doubt its accuracy, but we do not guarantee it. All information should be verified prior to purchase or lease. No warranty or representation, expressed or implied, is made as to the accuracy of the information contained herein.

# FLOOR PLAN



**EUGENIA SERAIA**

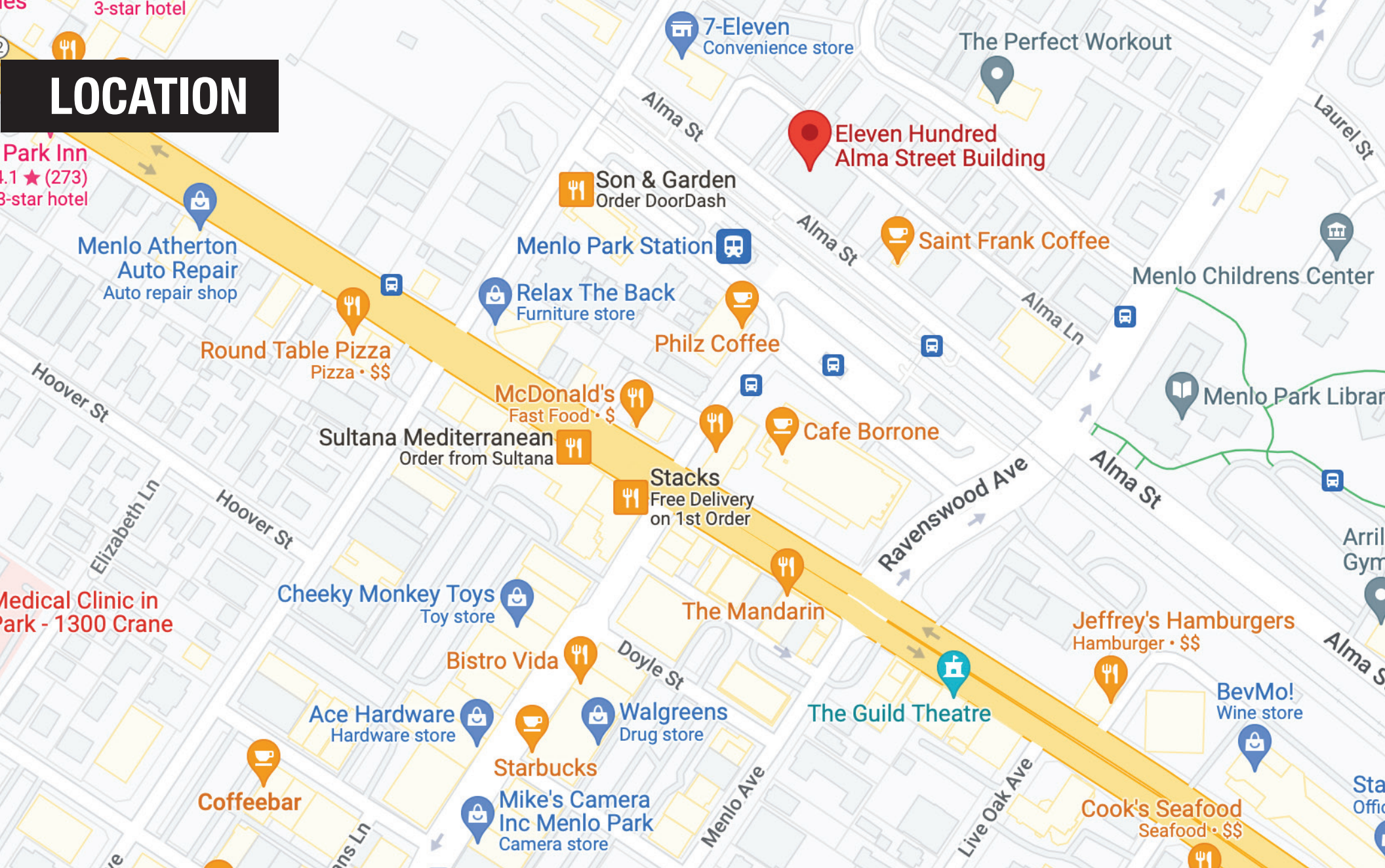
650.847.2041  
eseraia@ventanaps.com  
DRE# 02022599

**JOE MARTIGNETTI**

650.847.2000  
jmartignetti@ventanaps.com  
DRE# 01116935

The information contained herein has been given to us by the owner of the property or other sources we deem reliable. We have no reason to doubt its accuracy, but we do not guarantee it. All information should be verified prior to purchase or lease. No warranty or representation, expressed or implied, is made as to the accuracy of the information contained herein.

# LOCATION



**EUGENIA SERAIA**

650.847.2041  
eseraia@ventanaps.com  
DRE# 02022599

**JOE MARTIGNETTI**

650.847.2000  
jmartignetti@ventanaps.com  
DRE# 01116935

The information contained herein has been given to us by the owner of the property or other sources we deem reliable. We have no reason to doubt its accuracy, but we do not guarantee it. All information should be verified prior to purchase or lease. No warranty or representation, expressed or implied, is made as to the accuracy of the information contained herein.