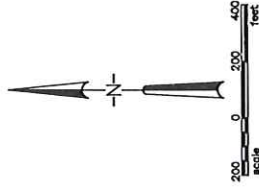
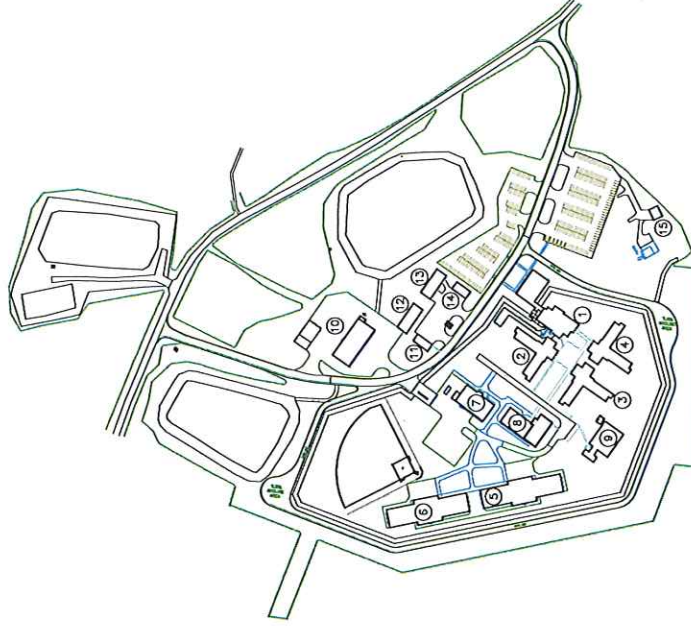


CAMP OJIBWAY
CORRECTIONAL FACILITY
MARENISCO, MICHIGAN

CAMP OJIBWAY CORRECTIONAL FACILITY
Marenisco, Michigan

Number	Name	Function	Year Constructed or Improved	Gross Area (Sq. Ft.)
1	Administration	Administration	x	16,985
2	A-Unit	Housing	x	18,570
3	B-Unit	Housing	x	18,570
4	C-Unit	Housing	x	18,570
5	E/D-Units	Housing	x	20,544
6	F/G-Units	Housing	x	20,544
7	Food Service	Service	x	8,560
8	Education	Education	x	10,658
9	Gymnasium	Education	x	10,634
10	Warehouse	Storage/Maintenance	x	9,800
11	Training	Education	x	1,800
12	Maintenance	Storage/Maintenance	x	4,160
13	Main./Wood Shop	Edu./Maintenance	x	4,000
14	Store	Service	x	1,870
15	Maintenance	Maintenance	x	1,325
				196,290

June 2011

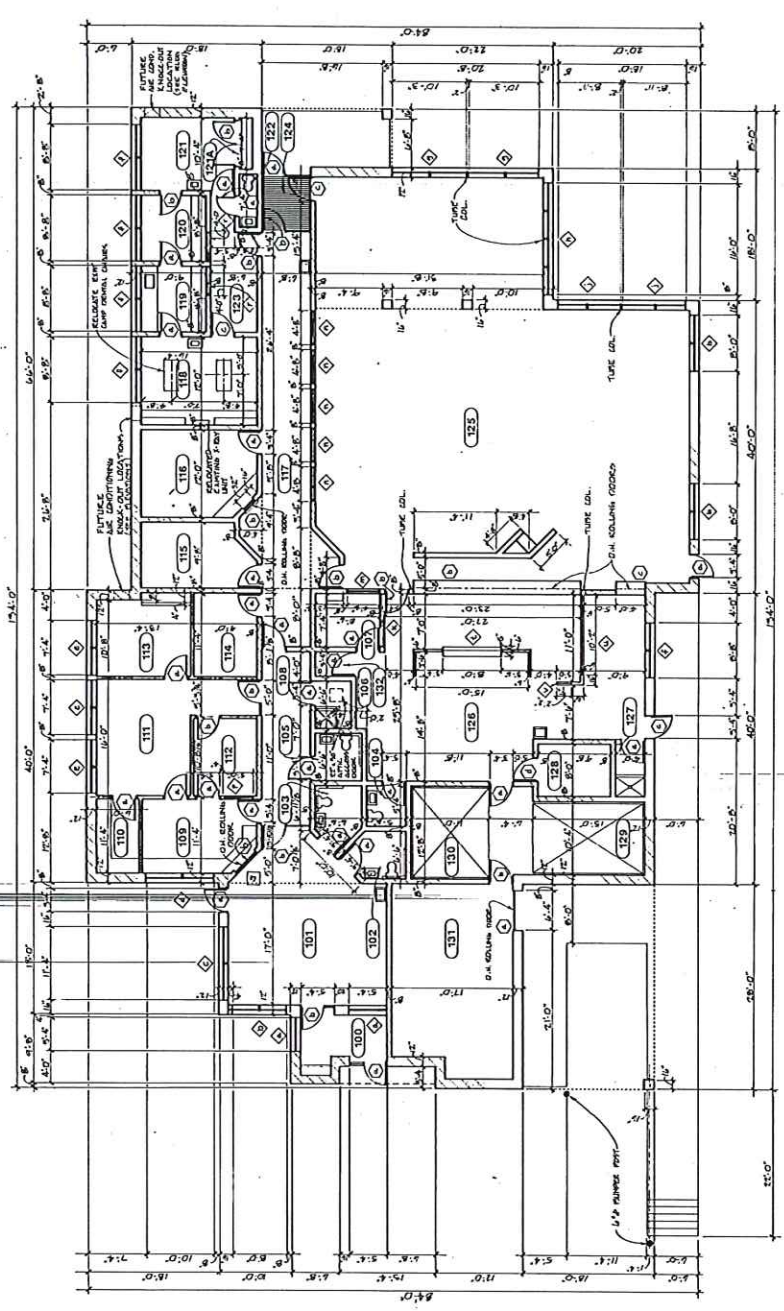


LEGEND

- PROPERTY LINE
- FENCE
- BUILDING
- ⑤ BUILDING NUMBER
- PAVED ROAD/PARKING
- UNPAVED ROAD
- RAILROAD
- WATER



STATE OF MICHIGAN
DEPARTMENT of TECHNOLOGY, MANAGEMENT and BUDGET
Facilities Administration
LANSING, MICHIGAN 48909



FLOOR PLAN W/DIMENSIONS AND DOOR & WINDOW DESIGNATIONS
 SCALE: 1/8" = 1'-0"

- ROOM NAME
- 100 VESTIBULE ENTRY AREA
 - 101 MEN'S TOILET
 - 102 WOMEN'S TOILET
 - 103 PRIVATE BULLOCK
 - 104 FOOD SUPERVISOR'S OFFICE
 - 105 CONTROL ROOM
 - 106 STORAGE
 - 107 OFFICE
 - 108 SUPERVISOR'S OFFICE
 - 109 COMPLAINTS OFFICE
 - 110 MECHANICAL ROOM
 - 111 CORRIDOR (HOLDING AREA)
 - 112 OFFICE
 - 113 LABORATORY
 - 114 OFFICE
 - 115 STORAGE
 - 116 KITCHEN
 - 117 VESTIBULE
 - 118 VESTIBULE
 - 119 KITCHEN
 - 120 DAILY MAIL OUT AREA
 - 121 FREIGHT
 - 122 DRY STORAGE & RECEIVING
 - 123 CAUSTICS
 - 124 KITCHEN
 - 125 DINE
 - 126
 - 127
 - 128
 - 129
 - 130
 - 131
 - 132

STATE OF MICHIGAN DEPARTMENT OF MANAGEMENT AND BUDGET Office of Facilities ALAN J. DORRIS, Director	DATE	DESIGNED
PROJECT	PRELIMINARY	DRAWN
EST. ACCOUNT	CONSTRUCTION	CHECKED
	FINAL ACCOUNT	APPROVED

FLOOR PLAN W/DIMENSIONS AND DOOR & WINDOW DESIGNATIONS	
A-3	
REV. NO.	
PROJECT NO. 8608-310	

NO.	DATE	BY	REVISIONS
1	1/25/82	J.C.	ISSUED FOR PERMITS
2	1/25/82	J.C.	REVISED
3	1/25/82	J.C.	REVISED
4	1/25/82	J.C.	REVISED
5	1/25/82	J.C.	REVISED
6	1/25/82	J.C.	REVISED
7	1/25/82	J.C.	REVISED
8	1/25/82	J.C.	REVISED
9	1/25/82	J.C.	REVISED
10	1/25/82	J.C.	REVISED
11	1/25/82	J.C.	REVISED
12	1/25/82	J.C.	REVISED
13	1/25/82	J.C.	REVISED
14	1/25/82	J.C.	REVISED
15	1/25/82	J.C.	REVISED
16	1/25/82	J.C.	REVISED
17	1/25/82	J.C.	REVISED
18	1/25/82	J.C.	REVISED
19	1/25/82	J.C.	REVISED
20	1/25/82	J.C.	REVISED
21	1/25/82	J.C.	REVISED
22	1/25/82	J.C.	REVISED
23	1/25/82	J.C.	REVISED
24	1/25/82	J.C.	REVISED
25	1/25/82	J.C.	REVISED
26	1/25/82	J.C.	REVISED
27	1/25/82	J.C.	REVISED
28	1/25/82	J.C.	REVISED
29	1/25/82	J.C.	REVISED
30	1/25/82	J.C.	REVISED
31	1/25/82	J.C.	REVISED
32	1/25/82	J.C.	REVISED
33	1/25/82	J.C.	REVISED
34	1/25/82	J.C.	REVISED
35	1/25/82	J.C.	REVISED
36	1/25/82	J.C.	REVISED
37	1/25/82	J.C.	REVISED
38	1/25/82	J.C.	REVISED
39	1/25/82	J.C.	REVISED
40	1/25/82	J.C.	REVISED
41	1/25/82	J.C.	REVISED
42	1/25/82	J.C.	REVISED
43	1/25/82	J.C.	REVISED
44	1/25/82	J.C.	REVISED
45	1/25/82	J.C.	REVISED
46	1/25/82	J.C.	REVISED
47	1/25/82	J.C.	REVISED
48	1/25/82	J.C.	REVISED
49	1/25/82	J.C.	REVISED
50	1/25/82	J.C.	REVISED
51	1/25/82	J.C.	REVISED
52	1/25/82	J.C.	REVISED
53	1/25/82	J.C.	REVISED
54	1/25/82	J.C.	REVISED
55	1/25/82	J.C.	REVISED
56	1/25/82	J.C.	REVISED
57	1/25/82	J.C.	REVISED
58	1/25/82	J.C.	REVISED
59	1/25/82	J.C.	REVISED
60	1/25/82	J.C.	REVISED
61	1/25/82	J.C.	REVISED
62	1/25/82	J.C.	REVISED
63	1/25/82	J.C.	REVISED
64	1/25/82	J.C.	REVISED
65	1/25/82	J.C.	REVISED
66	1/25/82	J.C.	REVISED
67	1/25/82	J.C.	REVISED
68	1/25/82	J.C.	REVISED
69	1/25/82	J.C.	REVISED
70	1/25/82	J.C.	REVISED
71	1/25/82	J.C.	REVISED
72	1/25/82	J.C.	REVISED
73	1/25/82	J.C.	REVISED
74	1/25/82	J.C.	REVISED
75	1/25/82	J.C.	REVISED
76	1/25/82	J.C.	REVISED
77	1/25/82	J.C.	REVISED
78	1/25/82	J.C.	REVISED
79	1/25/82	J.C.	REVISED
80	1/25/82	J.C.	REVISED
81	1/25/82	J.C.	REVISED
82	1/25/82	J.C.	REVISED
83	1/25/82	J.C.	REVISED
84	1/25/82	J.C.	REVISED
85	1/25/82	J.C.	REVISED
86	1/25/82	J.C.	REVISED
87	1/25/82	J.C.	REVISED
88	1/25/82	J.C.	REVISED
89	1/25/82	J.C.	REVISED
90	1/25/82	J.C.	REVISED
91	1/25/82	J.C.	REVISED
92	1/25/82	J.C.	REVISED
93	1/25/82	J.C.	REVISED
94	1/25/82	J.C.	REVISED
95	1/25/82	J.C.	REVISED
96	1/25/82	J.C.	REVISED
97	1/25/82	J.C.	REVISED
98	1/25/82	J.C.	REVISED
99	1/25/82	J.C.	REVISED
100	1/25/82	J.C.	REVISED

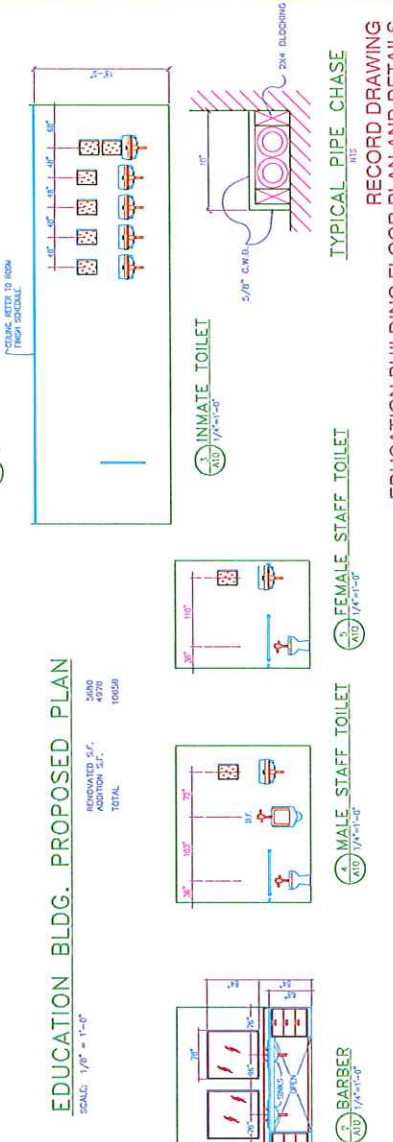
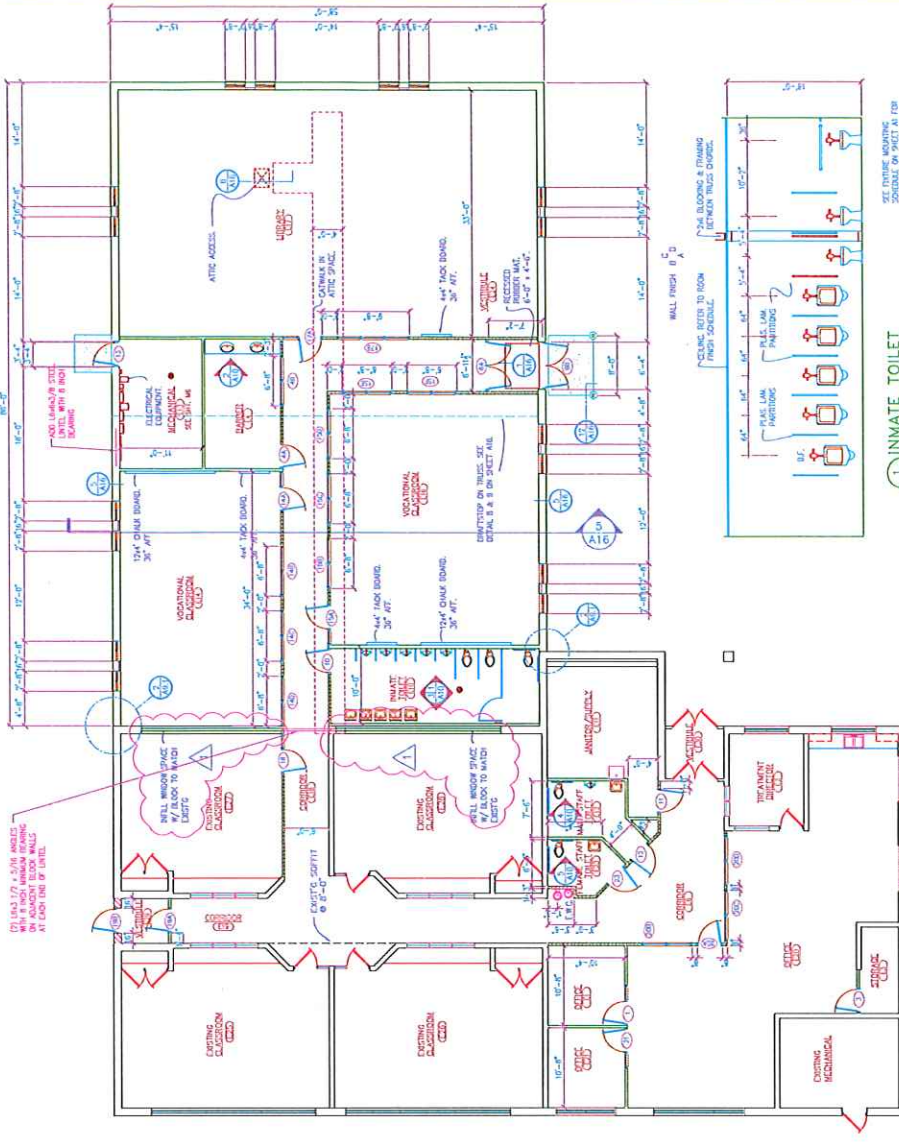
CAMP OJIBWAY
 MARENSICO, MICHIGAN

DESIGNER	DATE
DRAWN	1/25/82
CHECKED	1/25/82
APPROVED	1/25/82

Sundberg, Carlson and Associates, Inc.
 Architects • Engineers • Land Surveyors • Planners

ROOM FINISH SCHEDULE									
NO.	ROOM NAME	FLOOR FINISH	WALL FINISH				CEILING		REMARKS
			A	B	C	D	FINISH	HEIGHT	
E1	OFFICE	C	V	P	P	P	TC	6'-0"	
E2	TREATMENT DIRECTOR	C	V	P	P	P	TC	6'-0"	
E3	STORAGE	C	V	P	P	P	TC	6'-0"	
E4	DANIERE	C	V	P	P	P	TC	6'-0"	
E5	CORRIDOR	C	V	P	P	P	TC	6'-0"	
E6	CORRIDOR	C	V	P	P	P	TC	6'-0"	
E7	INMATE TOILET	EXP	EP	EP	EP	EP	GG	6'-0"	
E8	CLASSROOM	C	V	P	P	P	TC	6'-0"	
E9	CLASSROOM	C	V	P	P	P	TC	6'-0"	
E10	CLASSROOM	C	V	P	P	P	TC	6'-0"	
E11	CLASSROOM	C	V	P	P	P	TC	6'-0"	
E12	CLASSROOM	C	V	P	P	P	TC	6'-0"	
E13	MECHANICAL	C	V	P	P	P	TC	6'-0"	
E14	VOCATIONAL CLASSROOM	C	V	P	P	P	TC	6'-0"	
E15	VOCATIONAL CLASSROOM	C	V	P	P	P	TC	6'-0"	
E16	LIBRARY	C	V	P	P	P	TC	6'-0"	
E17	CLASSROOM	C	V	P	P	P	TC	6'-0"	
E18	CORRIDOR	C	V	P	P	P	TC	6'-0"	
E19	OFFICE	C	V	P	P	P	TC	6'-0"	
E20	OFFICE	C	V	P	P	P	TC	6'-0"	
E21	STAFF TOILET/MEN	V	VP	VP	VP	VP	GG	6'-0"	
E22	STAFF TOILET/WOMEN	V	VP	VP	VP	VP	GG	6'-0"	
E23	MECHANICAL	C	V	P	P	P	TC	6'-0"	
E24	MECHANICAL	C	V	P	P	P	TC	6'-0"	
E25	MECHANICAL	C	V	P	P	P	TC	6'-0"	
E26	MECHANICAL	C	V	P	P	P	TC	6'-0"	
E27	MECHANICAL	C	V	P	P	P	TC	6'-0"	
E28	MECHANICAL	C	V	P	P	P	TC	6'-0"	
E29	MECHANICAL	C	V	P	P	P	TC	6'-0"	
E30	MECHANICAL	C	V	P	P	P	TC	6'-0"	

DOOR & FRAME SCHEDULE										
NO.	TYPE	DOOR	ELECT	FRAME	SIZE	TYPE	DETAILS	HOURS	LABEL	REMARKS
1	DP	3'-0" x 6'-0"	0	SEL	3'-0" x 6'-0"	1	6/01	14	6	
2	DP	3'-0" x 6'-0"	0	SEL	3'-0" x 6'-0"	1	6/01	14	6	
3	DP	3'-0" x 6'-0"	0	SEL	3'-0" x 6'-0"	1	6/01	14	6	
4	DP	3'-0" x 6'-0"	0	SEL	3'-0" x 6'-0"	1	6/01	14	6	
5	DP	3'-0" x 6'-0"	0	SEL	3'-0" x 6'-0"	1	6/01	14	6	
6	DP	3'-0" x 6'-0"	0	SEL	3'-0" x 6'-0"	1	6/01	14	6	
7	DP	3'-0" x 6'-0"	0	SEL	3'-0" x 6'-0"	1	6/01	14	6	
8	DP	3'-0" x 6'-0"	0	SEL	3'-0" x 6'-0"	1	6/01	14	6	
9	DP	3'-0" x 6'-0"	0	SEL	3'-0" x 6'-0"	1	6/01	14	6	
10	DP	3'-0" x 6'-0"	0	SEL	3'-0" x 6'-0"	1	6/01	14	6	
11	DP	3'-0" x 6'-0"	0	SEL	3'-0" x 6'-0"	1	6/01	14	6	
12	DP	3'-0" x 6'-0"	0	SEL	3'-0" x 6'-0"	1	6/01	14	6	
13	DP	3'-0" x 6'-0"	0	SEL	3'-0" x 6'-0"	1	6/01	14	6	
14	DP	3'-0" x 6'-0"	0	SEL	3'-0" x 6'-0"	1	6/01	14	6	
15	DP	3'-0" x 6'-0"	0	SEL	3'-0" x 6'-0"	1	6/01	14	6	
16	DP	3'-0" x 6'-0"	0	SEL	3'-0" x 6'-0"	1	6/01	14	6	
17	DP	3'-0" x 6'-0"	0	SEL	3'-0" x 6'-0"	1	6/01	14	6	
18	DP	3'-0" x 6'-0"	0	SEL	3'-0" x 6'-0"	1	6/01	14	6	
19	DP	3'-0" x 6'-0"	0	SEL	3'-0" x 6'-0"	1	6/01	14	6	
20	DP	3'-0" x 6'-0"	0	SEL	3'-0" x 6'-0"	1	6/01	14	6	
21	DP	3'-0" x 6'-0"	0	SEL	3'-0" x 6'-0"	1	6/01	14	6	
22	DP	3'-0" x 6'-0"	0	SEL	3'-0" x 6'-0"	1	6/01	14	6	
23	DP	3'-0" x 6'-0"	0	SEL	3'-0" x 6'-0"	1	6/01	14	6	
24	DP	3'-0" x 6'-0"	0	SEL	3'-0" x 6'-0"	1	6/01	14	6	
25	DP	3'-0" x 6'-0"	0	SEL	3'-0" x 6'-0"	1	6/01	14	6	
26	DP	3'-0" x 6'-0"	0	SEL	3'-0" x 6'-0"	1	6/01	14	6	
27	DP	3'-0" x 6'-0"	0	SEL	3'-0" x 6'-0"	1	6/01	14	6	
28	DP	3'-0" x 6'-0"	0	SEL	3'-0" x 6'-0"	1	6/01	14	6	
29	DP	3'-0" x 6'-0"	0	SEL	3'-0" x 6'-0"	1	6/01	14	6	
30	DP	3'-0" x 6'-0"	0	SEL	3'-0" x 6'-0"	1	6/01	14	6	
31	DP	3'-0" x 6'-0"	0	SEL	3'-0" x 6'-0"	1	6/01	14	6	
32	DP	3'-0" x 6'-0"	0	SEL	3'-0" x 6'-0"	1	6/01	14	6	
33	DP	3'-0" x 6'-0"	0	SEL	3'-0" x 6'-0"	1	6/01	14	6	
34	DP	3'-0" x 6'-0"	0	SEL	3'-0" x 6'-0"	1	6/01	14	6	
35	DP	3'-0" x 6'-0"	0	SEL	3'-0" x 6'-0"	1	6/01	14	6	
36	DP	3'-0" x 6'-0"	0	SEL	3'-0" x 6'-0"	1	6/01	14	6	
37	DP	3'-0" x 6'-0"	0	SEL	3'-0" x 6'-0"	1	6/01	14	6	
38	DP	3'-0" x 6'-0"	0	SEL	3'-0" x 6'-0"	1	6/01	14	6	
39	DP	3'-0" x 6'-0"	0	SEL	3'-0" x 6'-0"	1	6/01	14	6	
40	DP	3'-0" x 6'-0"	0	SEL	3'-0" x 6'-0"	1	6/01	14	6	
41	DP	3'-0" x 6'-0"	0	SEL	3'-0" x 6'-0"	1	6/01	14	6	
42	DP	3'-0" x 6'-0"	0	SEL	3'-0" x 6'-0"	1	6/01	14	6	
43	DP	3'-0" x 6'-0"	0	SEL	3'-0" x 6'-0"	1	6/01	14	6	
44	DP	3'-0" x 6'-0"	0	SEL	3'-0" x 6'-0"	1	6/01	14	6	
45	DP	3'-0" x 6'-0"	0	SEL	3'-0" x 6'-0"	1	6/01	14	6	
46	DP	3'-0" x 6'-0"	0	SEL	3'-0" x 6'-0"	1	6/01	14	6	
47	DP	3'-0" x 6'-0"	0	SEL	3'-0" x 6'-0"	1	6/01	14	6	
48	DP	3'-0" x 6'-0"	0	SEL	3'-0" x 6'-0"	1	6/01	14	6	
49	DP	3'-0" x 6'-0"	0	SEL	3'-0" x 6'-0"	1	6/01	14	6	
50	DP	3'-0" x 6'-0"	0	SEL	3'-0" x 6'-0"	1	6/01	14	6	



EDUCATION BLDG. PROPOSED PLAN
SCALE: 1/8" = 1'-0"

5480
4378
10058
TOTAL

RECORD DRAWING
EDUCATION BUILDING FLOOR PLAN AND DETAILS

Conventional Constructed
 Modular Housing Units
 MARQUETTE & CAMP QUJWAY
 ACCOUNT NO. 110-47-5199-022

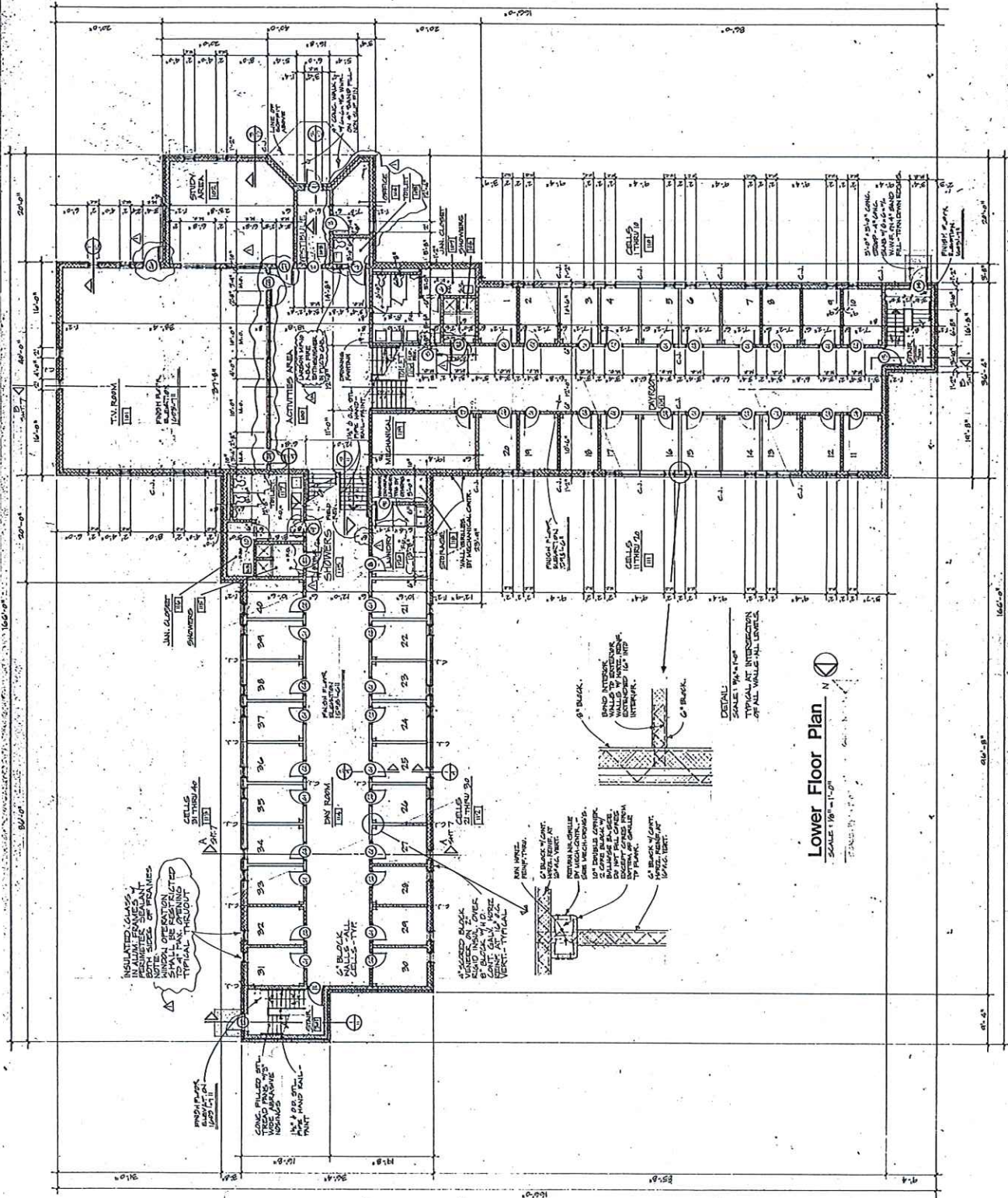
CLOSER
 2050 ENTERPRISE ST.
 MARQUETTE, MI 49855
 (313) 732-1140

LANDMARK
 ARCHITECTURAL
 ASSOCIATES INC
 1455 BROWN BLVD. S.E. - SUITE 200
 GRAND RAPIDS, MICHIGAN 49508 • TEL: 616-232-1100

DATE	CHANGE
10/20/88	FINAL CONTRACT REVIEW
10/10/88	REVISED CONTRACT
9/23/88	FINAL CONTRACT
9/10/88	FINAL CONTRACT REVIEW

LOCATION:
 CAMP QUJWAY
 MARQUETTE, MICH.
 UNIT NO. BUILDING A
 JOB NO. 8541 A
 DATE: AUGUST 1988

3



Conventional Constructed
 Modular Housing Units
 MARQUETTE & CAMP OUBWAY
 ACCOUNT NO. 119-47-419-192

CLOSER
 2050 ENTERPRISE ST.
 MARQUETTE, MI 49855

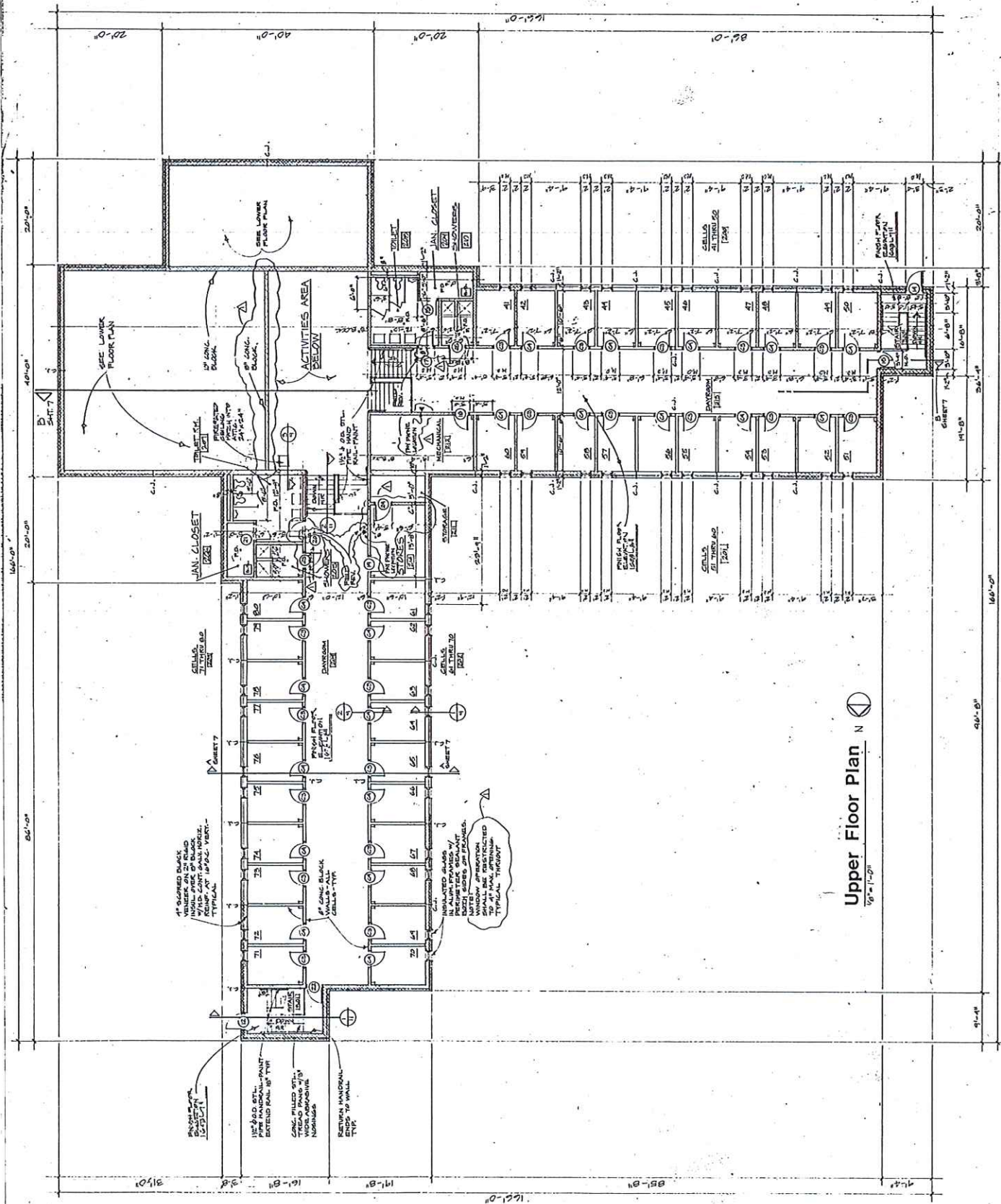
LANDMARK
 ARCHITECTURAL
 ASSOCIATES INC.
 4150 POWER PLANT BL. • CANTON MI 48105 • (313) 751-2373

REVISION	
NO.	DESCRIPTION
1	FINAL CONTRACT
2	DRAWING NO. 1
3	FINAL CONTRACT

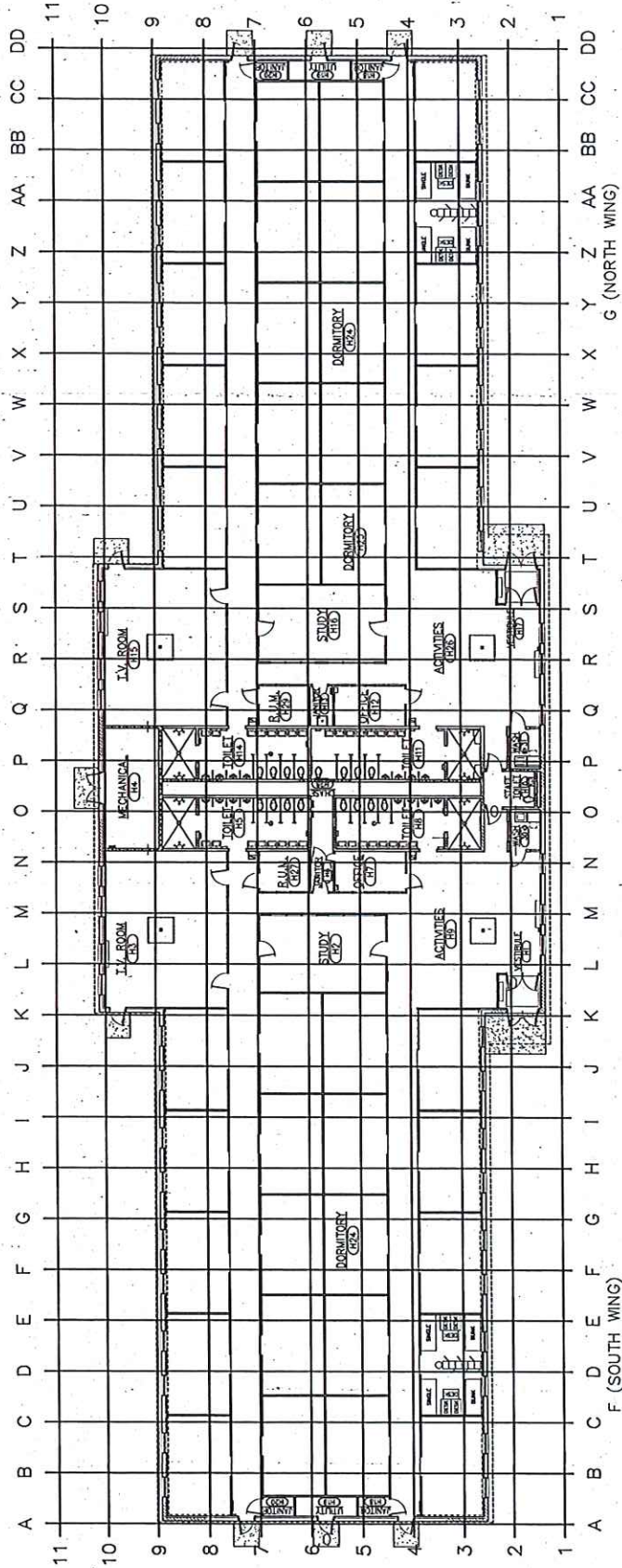
LOCATION:
 CAMP OUBWAY
 MARQUETTE, MI 49855

UNIT NO. B2541 A
 JOB NO. B2541 A
 DATE AUGUST 1982

4



Upper Floor Plan N
 1/8" = 1'-0"

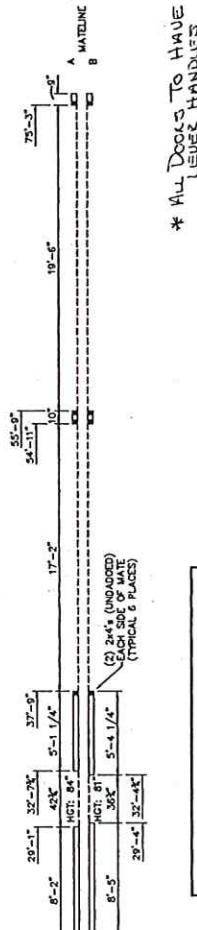
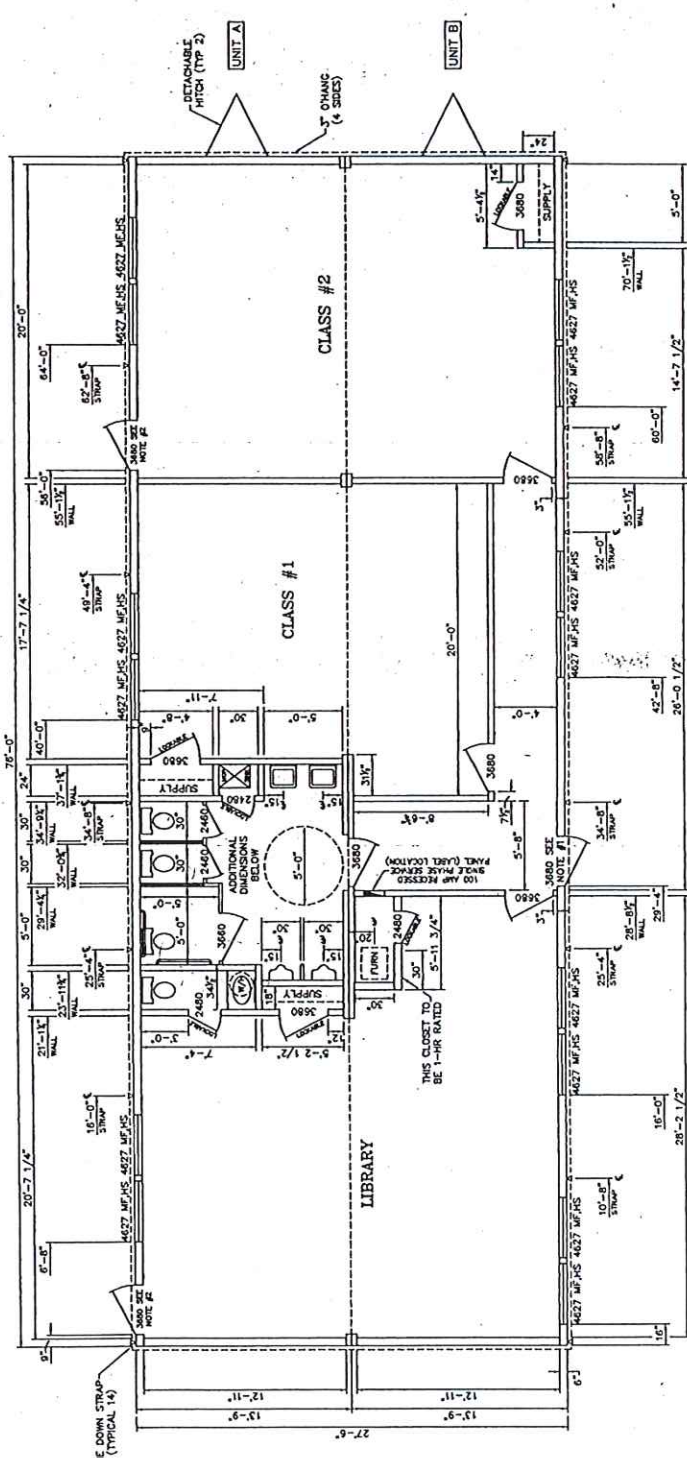


HOUSING UNIT 1

10 FOOT GRID
SCALE: 3/32" = 1'-0"

HOUSING UNIT 1 DUPRESS SYSTEM

DS-HI

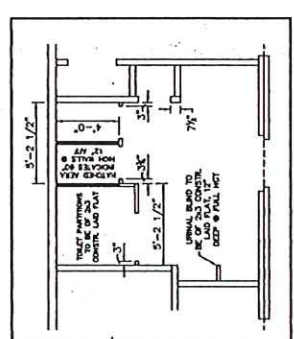


* ALL DOORS TO HAVE LEVEL HANDLES

- NOTES:
- 1) DOORS TO BE 3680 STEEL W/ WOOD BLANK HND CLOSER & PANIC HWR (1)
 - 2) DOORS TO BE 3680 STEEL W/ WOOD BLANK HND CLOSER, PANIC HWR & EXIT ONLY (NO EXTERIOR HANDLE) (2)
 - 3) SUP. CLOSER & WOOD BASE

ALL DOORS MAY REQUIRE ADJUSTMENT DUE TO SHIFTING DURING TRANSPORT. COMMERCIAL STRUCTURES CORP. MUST BE NOTIFIED PRIOR TO PERFORMING ANY WARRANTY WORK. FAILURE TO COMPLY WILL VOID THE WARRANTY CONTRACT.

THESE DRAWINGS AND CONCEPTS ARE THE SOLE PROPERTY OF COMMERCIAL STRUCTURES CORP. NO PARTS TO BE REPRODUCED IN ANY FORM WITHOUT THE EXPRESSED PERMISSION OF COMMERCIAL STRUCTURES CORP. THIS PRODUCT IS LEGALLY ENFORCED.



ROOF BEAM
 (4) LAYERS 3/4\"/>

DESCRIPTION	FRAMING	INTERIOR	EXTERIOR	INSULATION	SHEATHING
FLOOR	2x6 @ 16\"/>	3/4\"/>	BOTTOM BOARD (VINYL LAP)	R-19 KRAFT	—
WALLS	2x6 @ 16\"/>	1/2\"/>	SOIKE (VINYL LAP) TRIM (VINYL)	R-19 KRAFT	3/8\"/>
PARTITIONS	2x4 @ 16\"/>	3/8\"/>	—	R-11 KRAFT	—
ROOF	2x4 @ 16\"/>	3/8\"/>	FIBERGLASS SHINGLES OVER DBL LAYER OF FELT PAPER	R-40 KRAFT	1/2\"/>

Commercial Structures corp.

2880/27'-6\"/>

NO. 1 DATE

CONTAINER FOUR SEASONS HOUSING

DRAWN BY WILDE SCALE: 3/16\"/>

PRODUCTION FLOOR PLAN 2