



GIRALDA PLACE
BOUTIQUE RETAIL
CORAL GABLES, FLORIDA



CORNER BOUTIQUE RETAIL SPACE
AT SIGNALIZED INTERSECTION | FOR LEASE



BOUTIQUE RETAIL FOR LEASE



GIRALDA PLACE

2222 Ponce De Leon Blvd
Coral Gables, FL 33134

Giralda Place is a luxury condominium complex located mere blocks from luxurious Miracle Mile, with easy access to public transportation and the delightful Coral Gables trolley. The classic elegance of Coral Gables' beloved and unique Mediterranean Revival architecture is encompassed in Giralda Place.



GROUND FLOOR
± 1,859 SF

MEZZANINE
± 1,269 SF



POSSESSION
Arranged

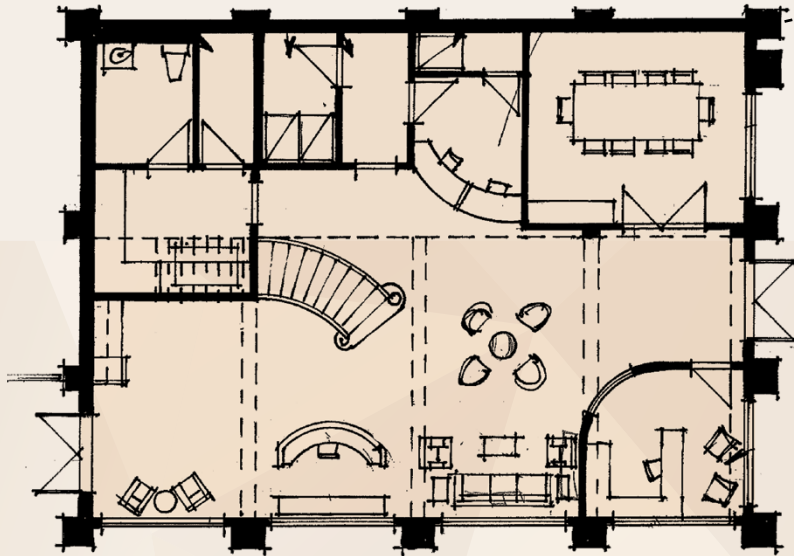
RENT
Upon request



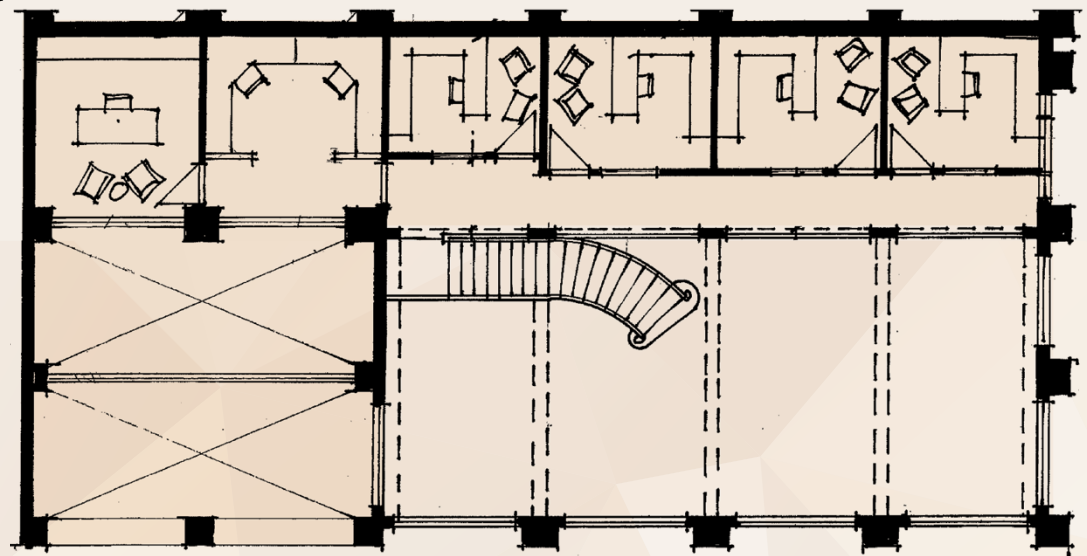
comras company
redefining retail.



SITE PLAN



GROUND FLOOR
± 1,859 SF



MEZZANINE
± 1,269 SF



Suite 2222 - Interior



Suite 2222 - Interior



An elegant location with an energetic vibe - one block away from Giralda Plaza's curated activities that attract diners, music lovers and clientele that enjoys a vibrant lifestyle.

An ideal location for boutique retail offerings. Ample public parking and pedestrian activity bolster this location's allure.



174.2K

DAYTIME POPULATION

*3-Mile Data

246.8K

TRADE AREA POPULATION

\$128.3K

AVERAGE HH INCOME

97.2K

ESTIMATED HHS

99

WALK SCORE



GIRALDA PLACE
BOUTIQUE RETAIL
CORAL GABLES, FLORIDA

EXCLUSIVE AGENTS:



comras company
redefining retail.

VICKI FREEMAN
Senior Leasing Associate
vfreeman@comrascompany.com
c. 917.499.2855

1261 20th Street
Miami Beach, FL 33139
t. 305.532.0433
comrascompany.com