

Specifications

±2,500 SF
TOTAL BUILDING SIZE

±0.85 AC (Block 49, Lot 53)
TOTAL ACREAGE

2 (14'W x 16'H)
DRIVE-INS

18' Clear
CEILING HEIGHT

Wet
SPRINKLER SYSTEM

Metal
CONSTRUCTION

3P
POWER

LI
ZONING

For additional property information or to arrange an inspection, please contact the exclusive brokers:

Jason M. Crimmins, CCIM, SIOR
Chief Executive Officer
973.379.6644 x 122
jmcrimmins@blauberg.com

Alessandro (Alex) Conte, CCIM, SIOR
President
973.379.6644 x 131
aconte@blauberg.com

Peter J. Murano, Jr., SIOR
Managing Executive Director
973.379.6644 x 114
pjmurano@blauberg.com



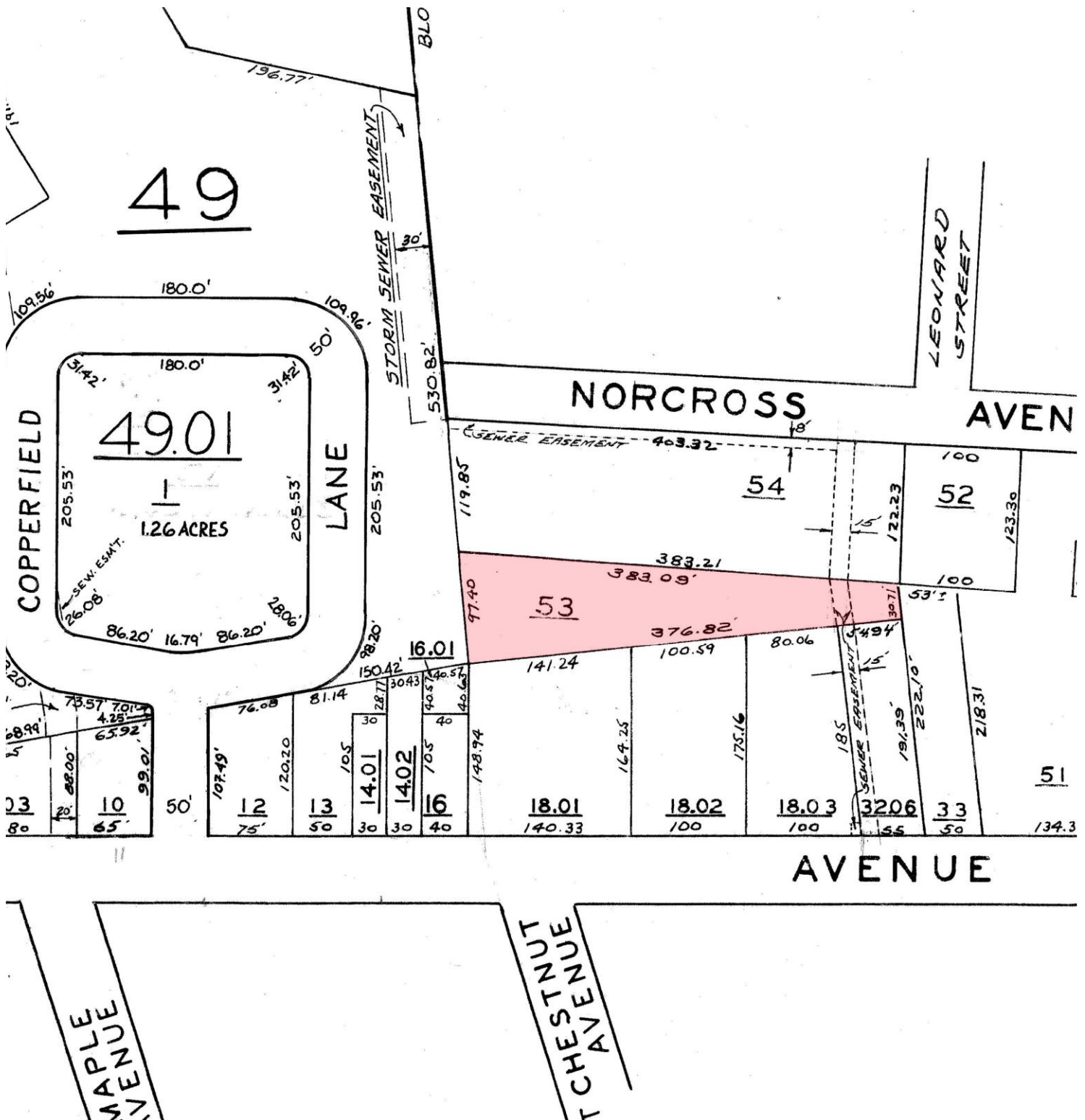
For additional property information or to arrange an inspection, please contact the exclusive brokers:

Jason M. Crimmins, CCIM, SIOR
Chief Executive Officer
973.379.6644 x 122
jmcrimmins@blauberg.com

Alessandro (Alex) Conte, CCIM, SIOR
President
973.379.6644 x 131
aconte@blauberg.com

Peter J. Murano, Jr., SIOR
Managing Executive Director
973.379.6644 x 114
pjmurano@blauberg.com

The information contained herein has been obtained from sources considered to be reliable, but no guarantee of its accuracy is made by this company. In addition, no representation is made respecting zoning, condition of title, dimensions, or any matters of a legal or environmental nature. Such matters should be referred to legal counsel for determination. Terms and conditions are subject to change without prior notice. Subject to errors and omissions.

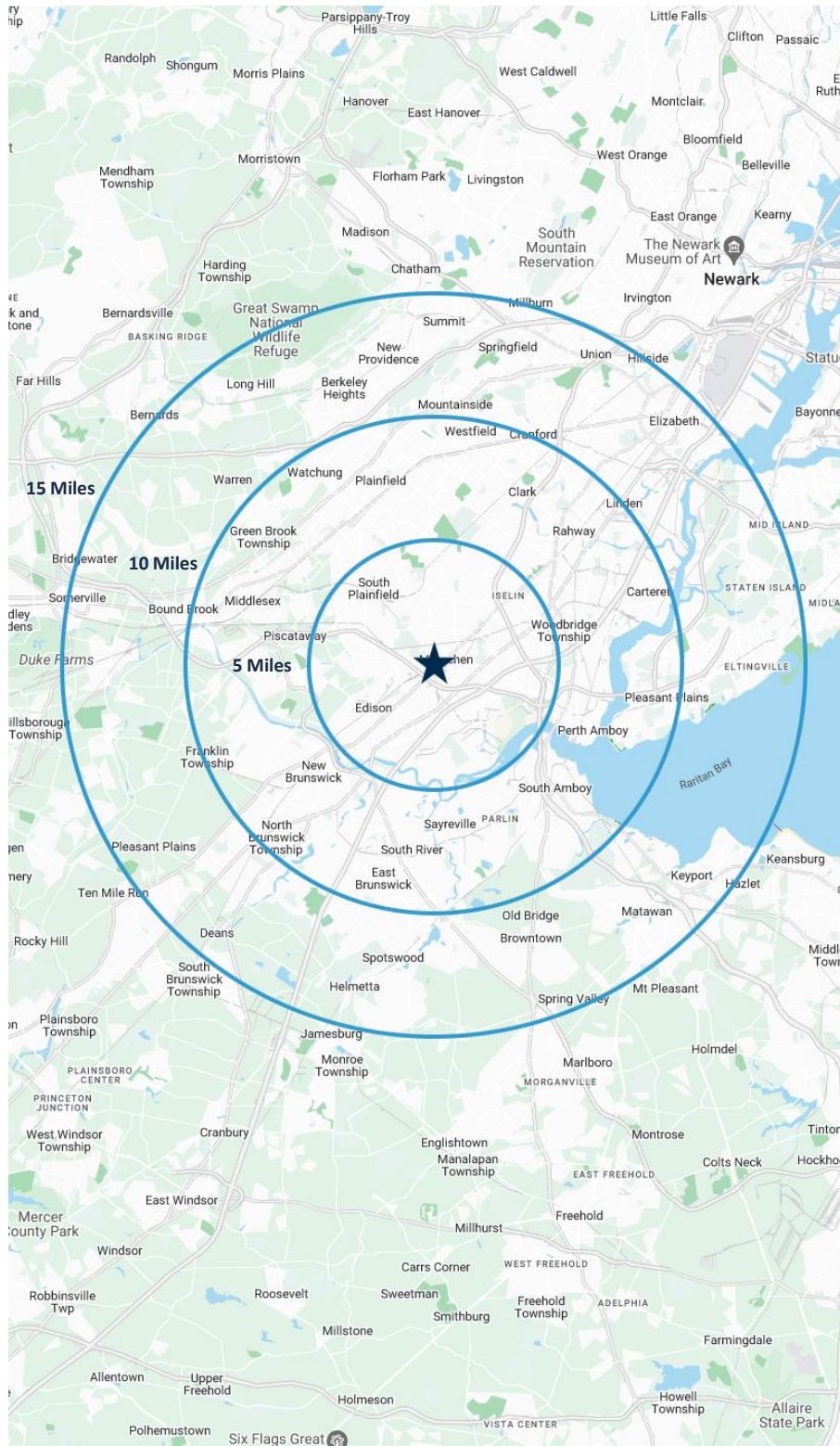


For additional property information or to arrange an inspection, please contact the exclusive brokers:

Jason M. Crimmins, CCIM, SIOR
Chief Executive Officer
973.379.6644 x 122
jmcrimmins@blauberg.com

Alessandro (Alex) Conte, CCIM, SIOR
President
973.379.6644 x 131
aconte@blauberg.com

Peter J. Murano, Jr., SIOR
Managing Executive Director
973.379.6644 x 114
pjmurano@blauberg.com



5 MILES

- Total Population: 305,643
- Households: 105,876
- Median Household Income: \$130,098
- Average Household Size: 2.8
- Transportation to Work: 148,887
- Labor Force: 248,680

10 MILES

- Total Population: 1.18M
- Households: 413,775
- Median Household Income: \$123,596
- Average Household Size: 2.8
- Transportation to Work: 593,039
- Labor Force: 956,534

15 MILES

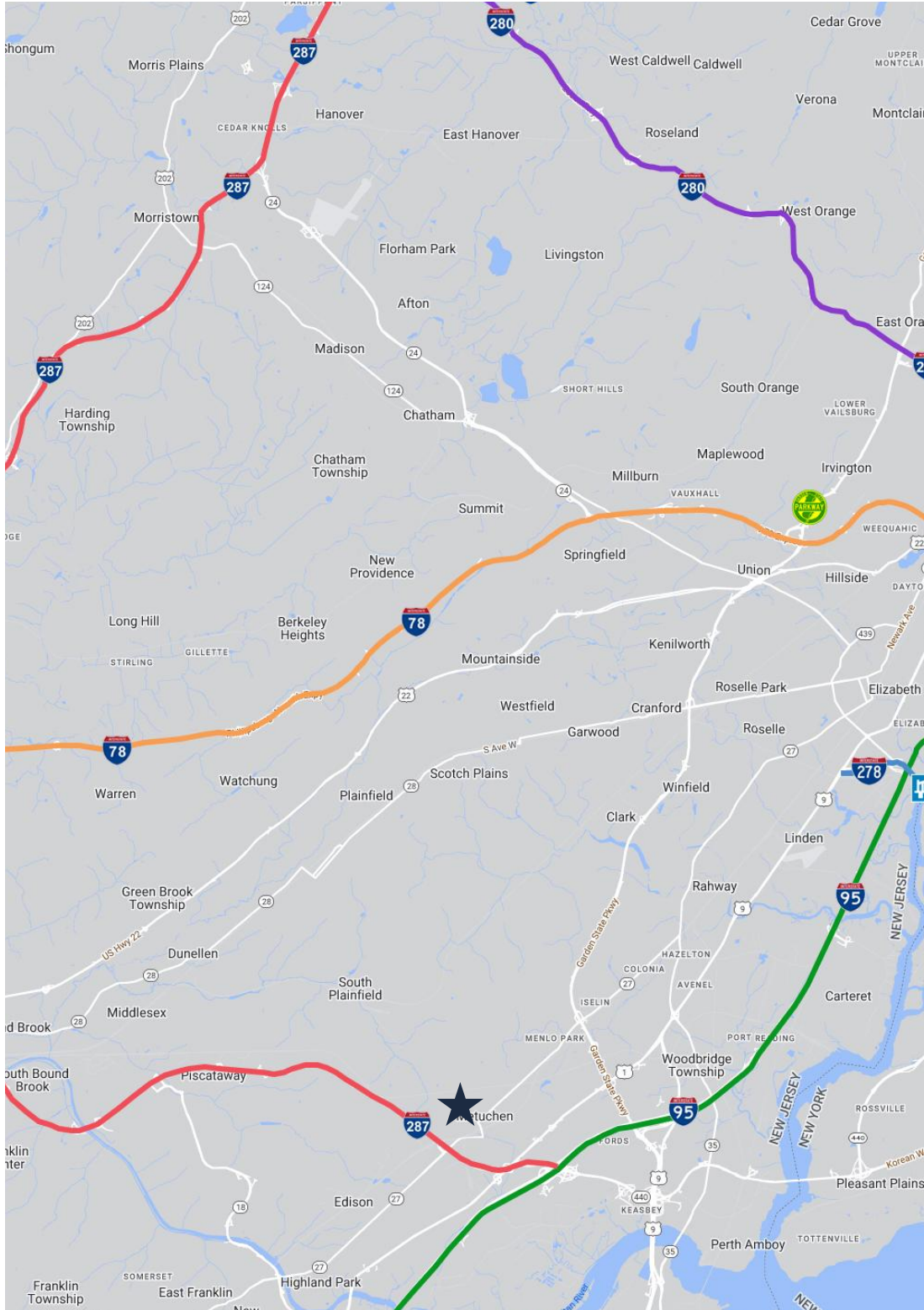
- Total Population: 2.37M
- Households: 840,150
- Median Household Income: \$123,548
- Average Household Size: 2.8
- Transportation to Work: 1.2M
- Labor Force: 1.91M

For additional property information or to arrange an inspection, please contact the exclusive brokers:

Jason M. Crimmins, CCIM, SIOR
Chief Executive Officer
973.379.6644 x 122
jmcrimmins@blauberg.com

Alessandro (Alex) Conte, CCIM, SIOR
President
973.379.6644 x 131
aconte@blauberg.com

Peter J. Murano, Jr., SIOR
Managing Executive Director
973.379.6644 x 114
pjmurano@blauberg.com



ACCESSIBILITY



1.0 MI
Route 27



1.8 MI
I-287



2.0 MI
US 1



3.4 MI
GSP Exit 132



4.8 MI
I-95 Exit 10



6.1 MI
Rutgers Univ.
Livingston



21 MI
Newark Airport

For additional property information or to arrange an inspection, please contact the exclusive brokers:

Jason M. Crimmins, CCIM, SIOR
Chief Executive Officer
973.379.6644 x 122
jmcrimmins@blauberg.com

Alessandro (Alex) Conte, CCIM, SIOR
President
973.379.6644 x 131
aconte@blauberg.com

Peter J. Murano, Jr., SIOR
Managing Executive Director
973.379.6644 x 114
pjmurano@blauberg.com