



RYAN TRAVIS

760.983.2594 RTravis@KurschGroup.com

BRE # 01358790 Corporate BRE # 01896143

12180 Ridgcrest Rd, Suite 232, Victorville, CA 92395
760.983.2383 • Contact@kurschgroup.com • Kurschgroup.com



ADDRESS

19031 Hwy 18 Ste 220
Apple Valley, CA

ASSESSORS PARCEL NUMBER

0473-041-09

PROPERTY OVERVIEW

Joshua Knolls Professional Office Building is well situated on the south side of Hwy 18, at the corner of Yanan Rd in the Town of Apple Valley. This stretch of Hwy 18 sees high daily traffic counts exceeding 25,800 ADT. A two-story multi-tenant property, Joshua Knolls boasts longtime tenants such as Green Valley Home Health Services, Tri-Cities Physical Therapy, among others.

Hands on ownership strives to ensure that tenants at the building are happy and satisfied with the provided facility. Located in close proximity to many professional offices and medical facilities and is less than a mile east of St. Mary's Regional Medical Center.

The building is equipped with a shared common conference room furnished and available for all tenants to use as well as common area restrooms.

Suite 220 is 400 Sq. ft one large open office area suitable for multiple work stations or cubicles. Smaller entry area suitable for waiting or reception. One private room that could be a small private office or storage room.

MUNICIPALITY

City of Apple Valley | County of San Bernardino

ZONING

Office Suites

ASKING FOR LEASE PRICE

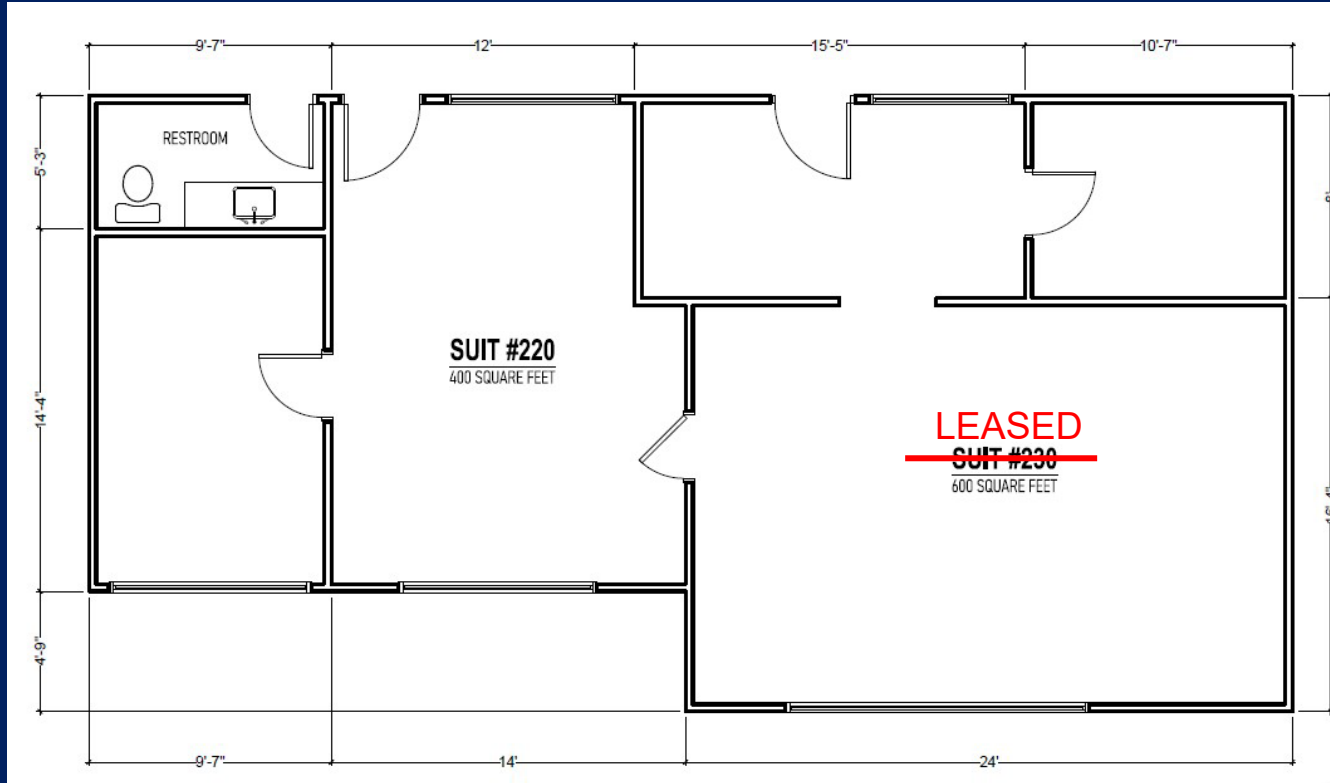
\$1.50 per sqft MG



SUITE 220



SUITE 220



LOCATION



Joshua Knolls Professional Office Building is located at the Southwest corner of Highway 18 and Yanana Rd, in the beautiful Town of Apple Valley, CA.

