

# 2825 EASTLAKE

2825 EASTLAKE AVE E, SEATTLE, WA 98102



BLUME COMPANY  
REAL ESTATE

FOR LEASE



## OFFICE SPACE AVAILABLE

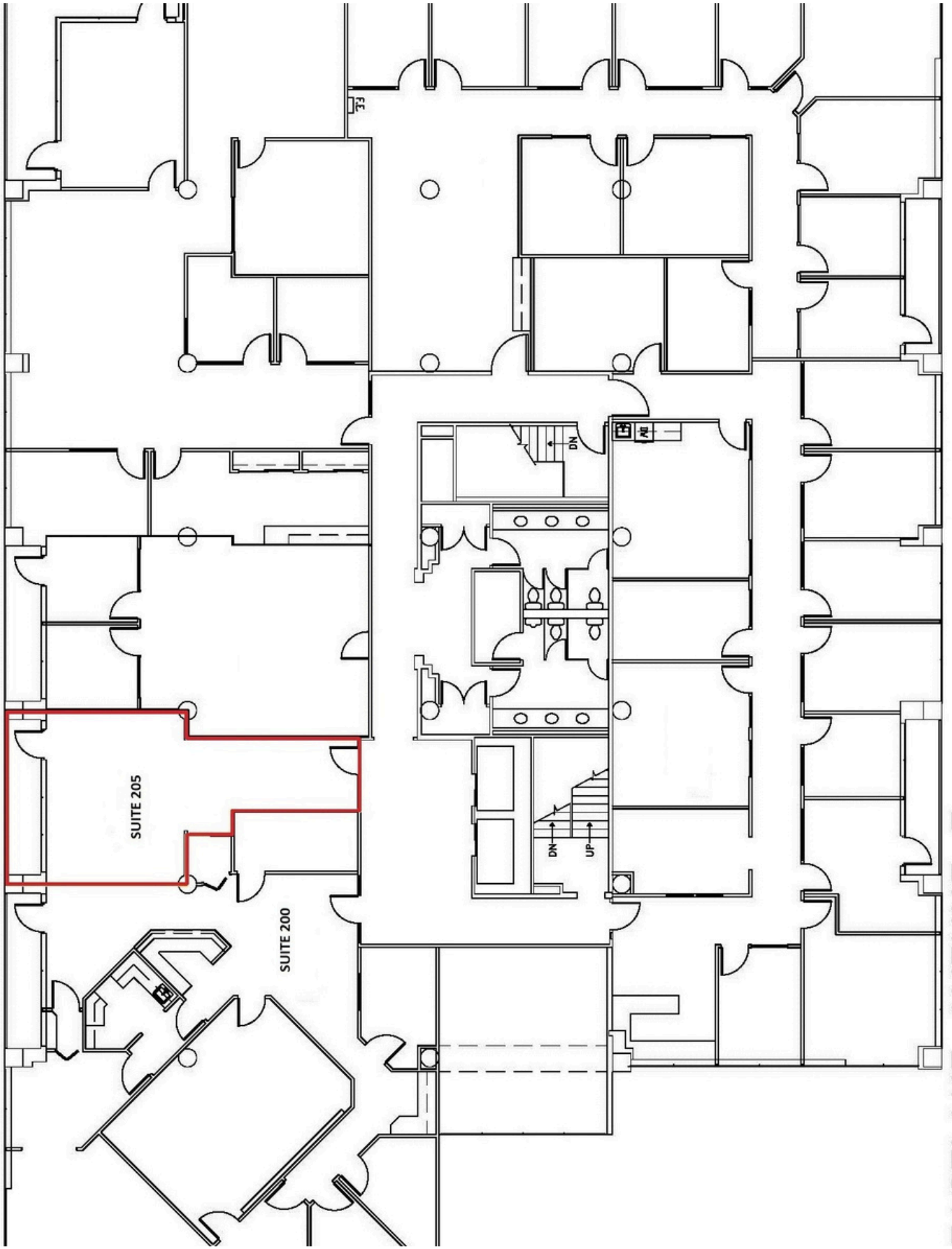
SUITE 205 - 650 SQ FT AVAILABLE

SUITE 230 - 2,850 SQ FT AVAILABLE AUG 1, 2025

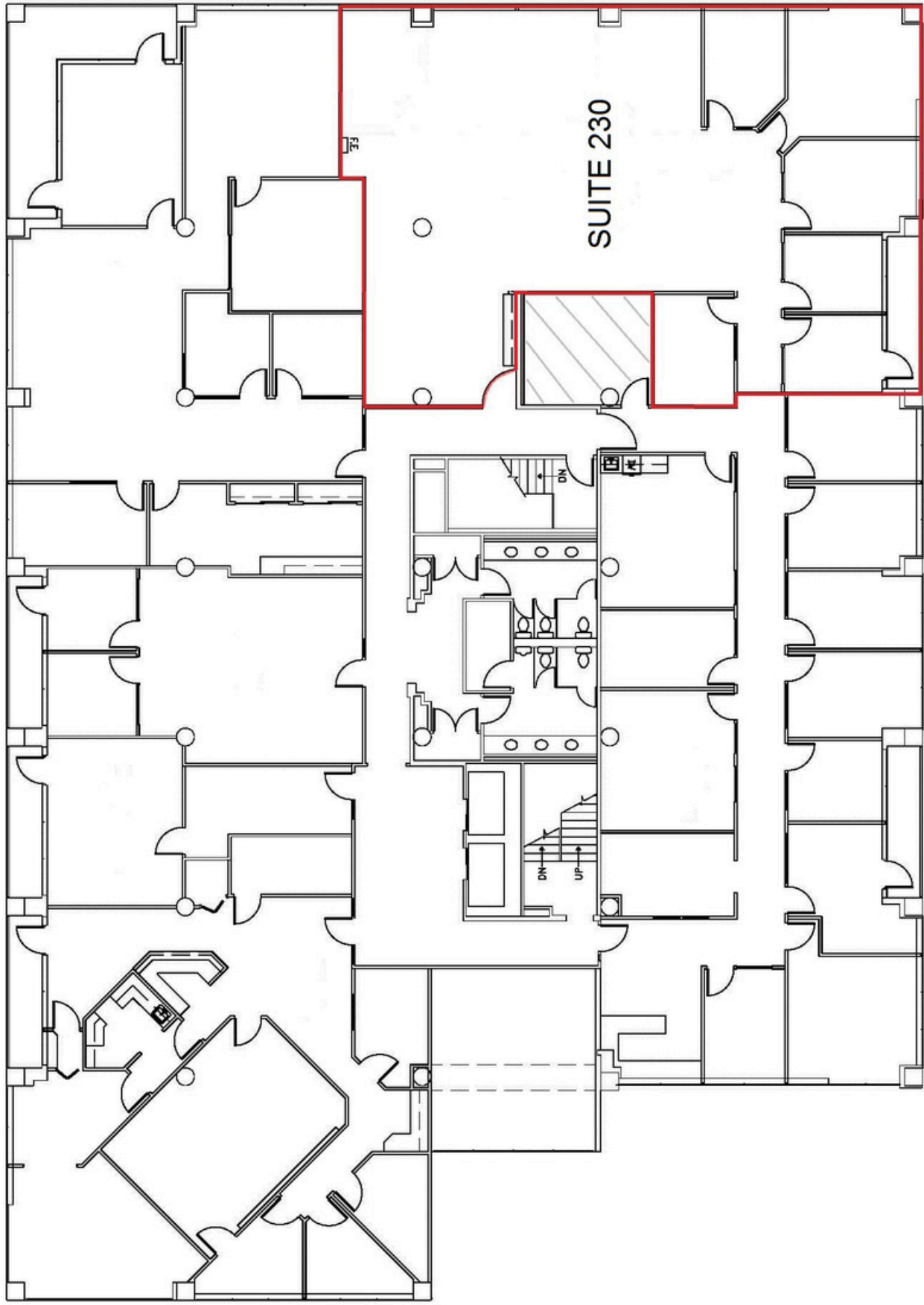
SUITE 320 - 1,936 SQ FT AVAILABLE JAN 1, 2025

EXCELLENT EASTLAKE CORRIDOR LOCATION OVERLOOKING LAKE UNION. STEPS FROM PUBLIC KAYAK ACCESS AT E ALLISON ST, A CITY OF SEATTLE DESIGNATED SHORELINE STREET END LOCATION. EASY WALK TO STARBUCKS, LITTLE WATER CANTINA, PECADO BUENO, LE FOURNIL FRENCH BAKERY & CATERING, SUSHI KAPPO TAMURA, OTTER BAR & BURGER, JOHNNY MO'S PIZZERIA AND SON OF A BUTCHER.

- SWEEPING LAKE UNION VIEWS
- STEPS FROM PUBLIC KAYAK ACCESS POINT
- BIKE STORAGE
- SHOWER FACILITIES
- AMPLE ONSITE PARKING
- NEAR MULTIPLE I-5 ACCESS POINTS



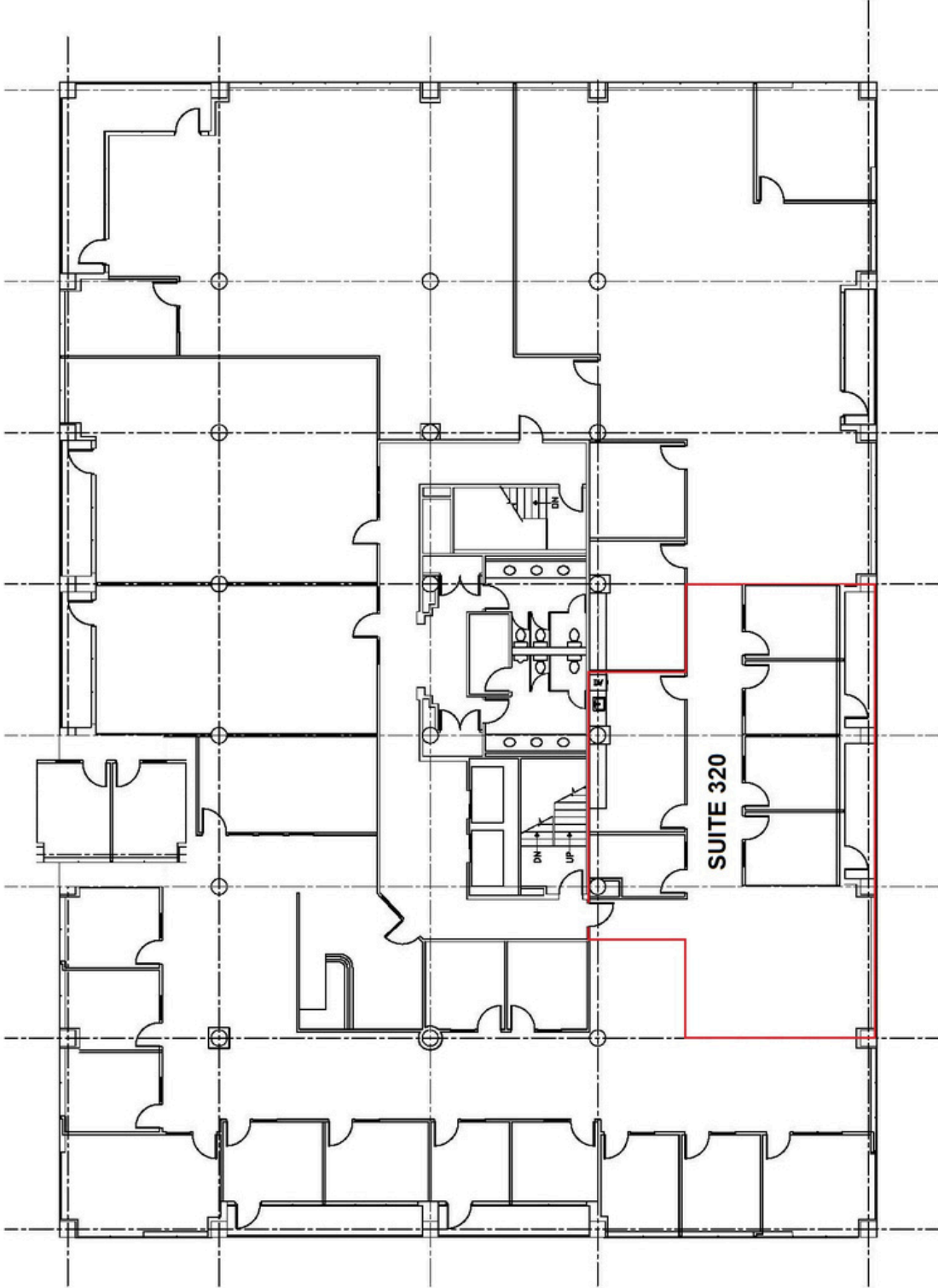
EASTLAKE AVENUE E



SUITE 230

2825 EASTLAKE AVENUE E





2825 EASTLAKE AVENUE E

