



AUTOMOTIVE/RETAIL SHOP FOR SALE OR LEASE

3507 N GARFIELD AVENUE, LOVELAND, CO 80538

With immediate access to Hwy. 287 this property is well located near Orchards Shopping Center, a neighborhood retail center anchored by King Soopers.

AVAILABLE SIZE

8,244 SF - Various Buildings

SALES PRICE

\$1,800,000

LEASE RATE

\$17.00/SF + \$4.00/SF NNN

ZONING

B - Developing Business

WAREHOUSE PHOTOS



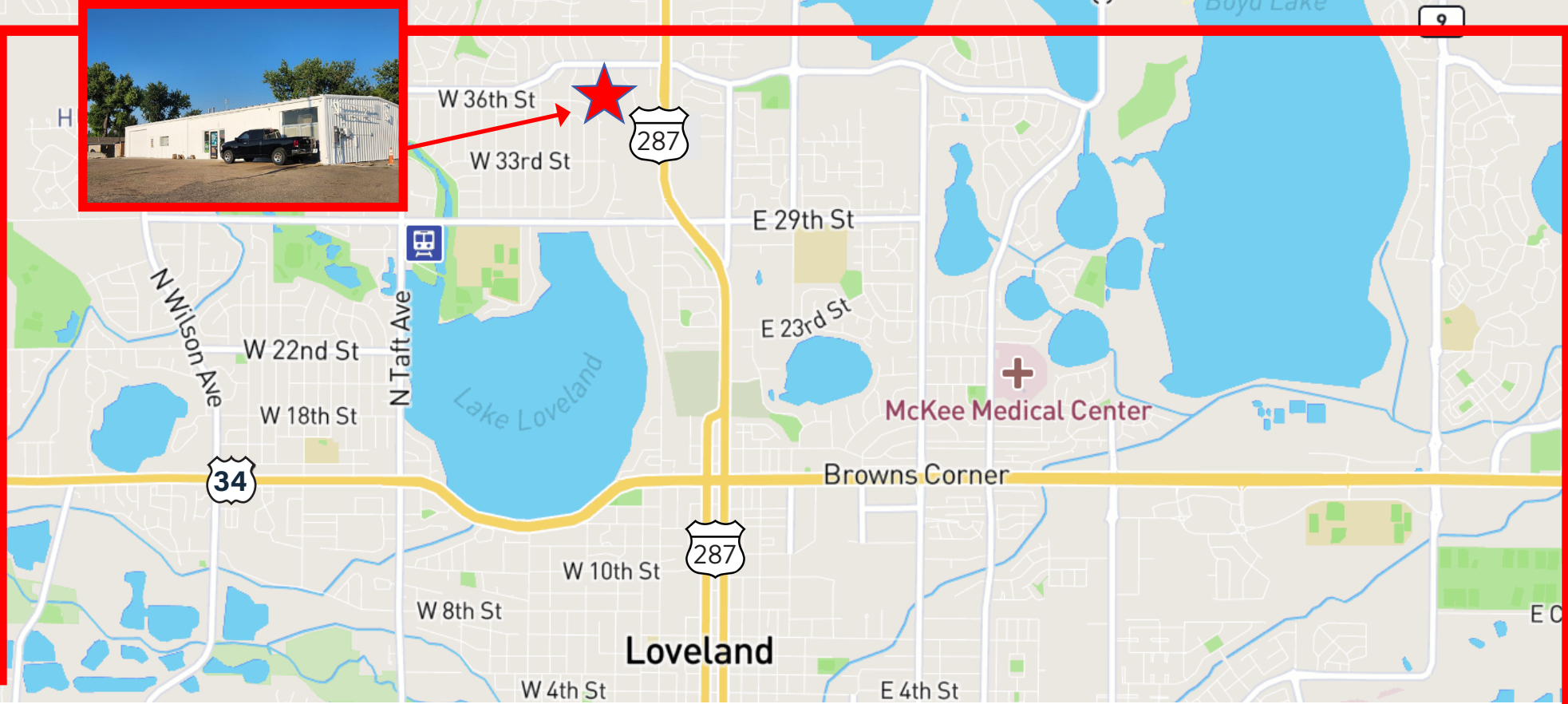
WAREHOUSE PHOTOS



AMENITIES

- High Visibility from Highway 287
- Monument Sign
- 3 Phase Power
- Dock High Loading
- Zoning B - Developing Business - Loveland





PLEASE CONTACT:

JULIUS TABERT

First Vice President
+970 372 3852
julius.tabert@cbre.com

www.cbre.com/colorado



2024 CBRE, Inc. All rights reserved. This information has been obtained from sources believed reliable, but has not been verified for accuracy or completeness. You should conduct a careful, independent investigation of the property and verify all information. Any reliance on this information is solely at your own risk. CBRE and the CBRE logo are service marks of CBRE, Inc. All other marks displayed on this document are the property of their respective owners, and the use of such logos does not imply any affiliation with or endorsement of CBRE. Photos herein are the property of their respective owners. Use of these images without the express written consent of the owner is prohibited. (0924)