

251 Laguna Street

Hayes Valley, San Francisco, CA

I | P | G

Queen Anne Victorian Built in 1890 with Classic Detailing
Premier HQ 5,190 RSF For Lease

Founder Mansion Ideal for Startup HQ, Team House, or Live/Work Office

Innovation Properties Group
181 2nd Street, San Francisco, CA
www.ipgsf.com | CL 02031924

Ivan Smiljanic | Partner
510-717-5008 | ivan@ipgsf.com
BRE 1995999

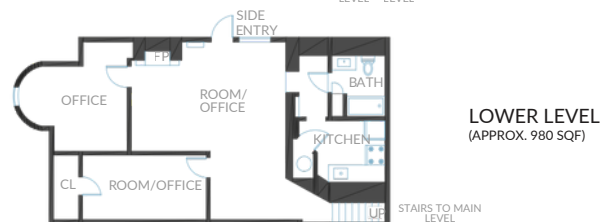
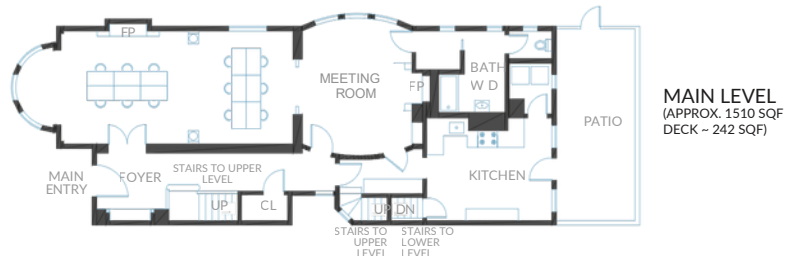
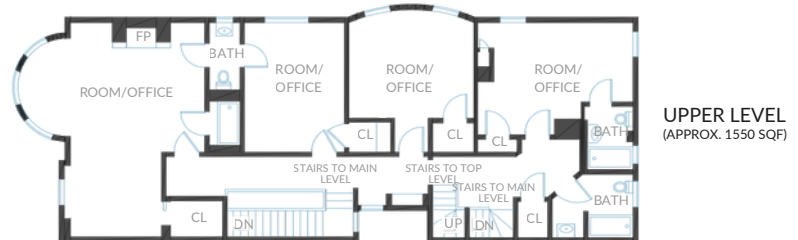
Rocky Kile | Director
401-263-4218 | rocky@ipgsf.com
BRE 02233435

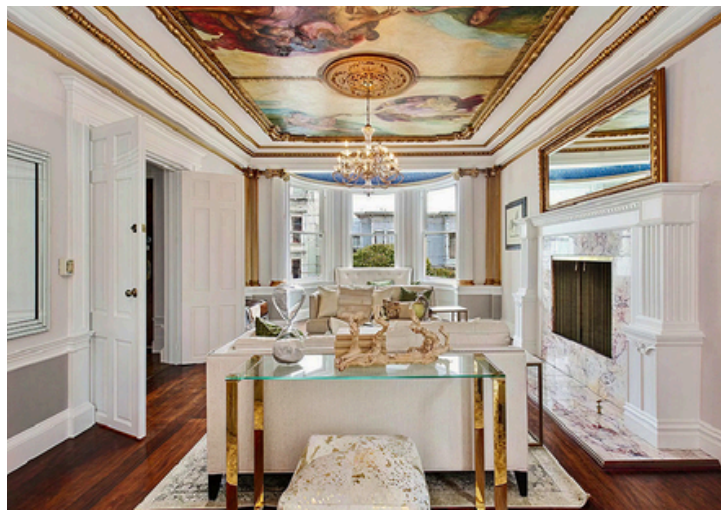
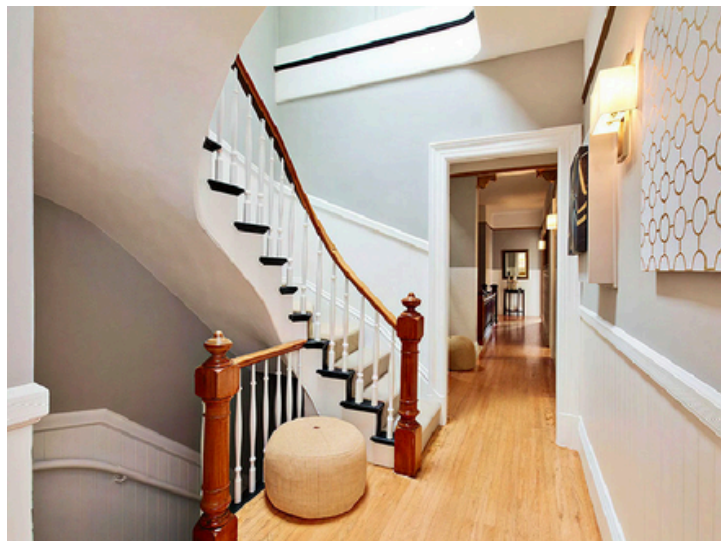
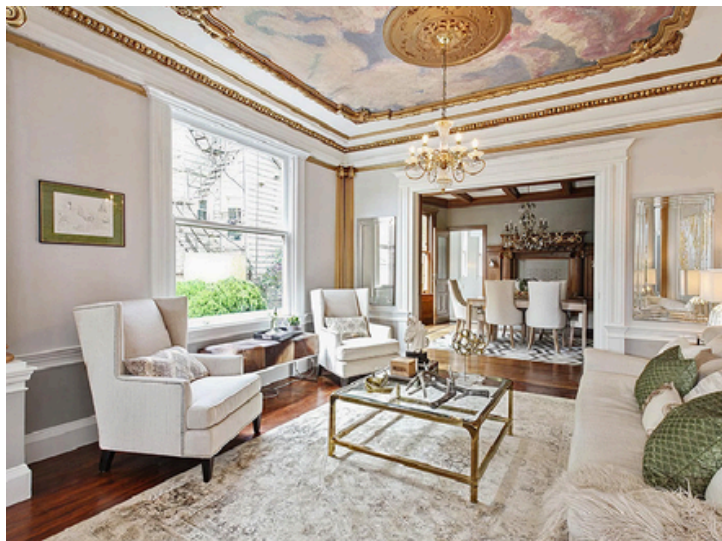
ipgsf.com

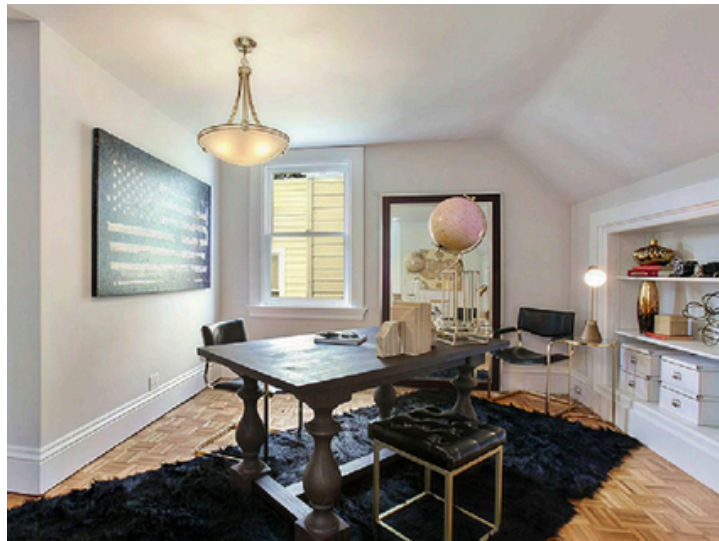


For Lease

- 5,190 RSF
- 8 bedrooms + 7 bathrooms
- Enclosed Patio
- High Ceilings
- Room for 20 workstations
- Stained Glass Windows
- Hardwood Floors
- Tandem-Parking Available

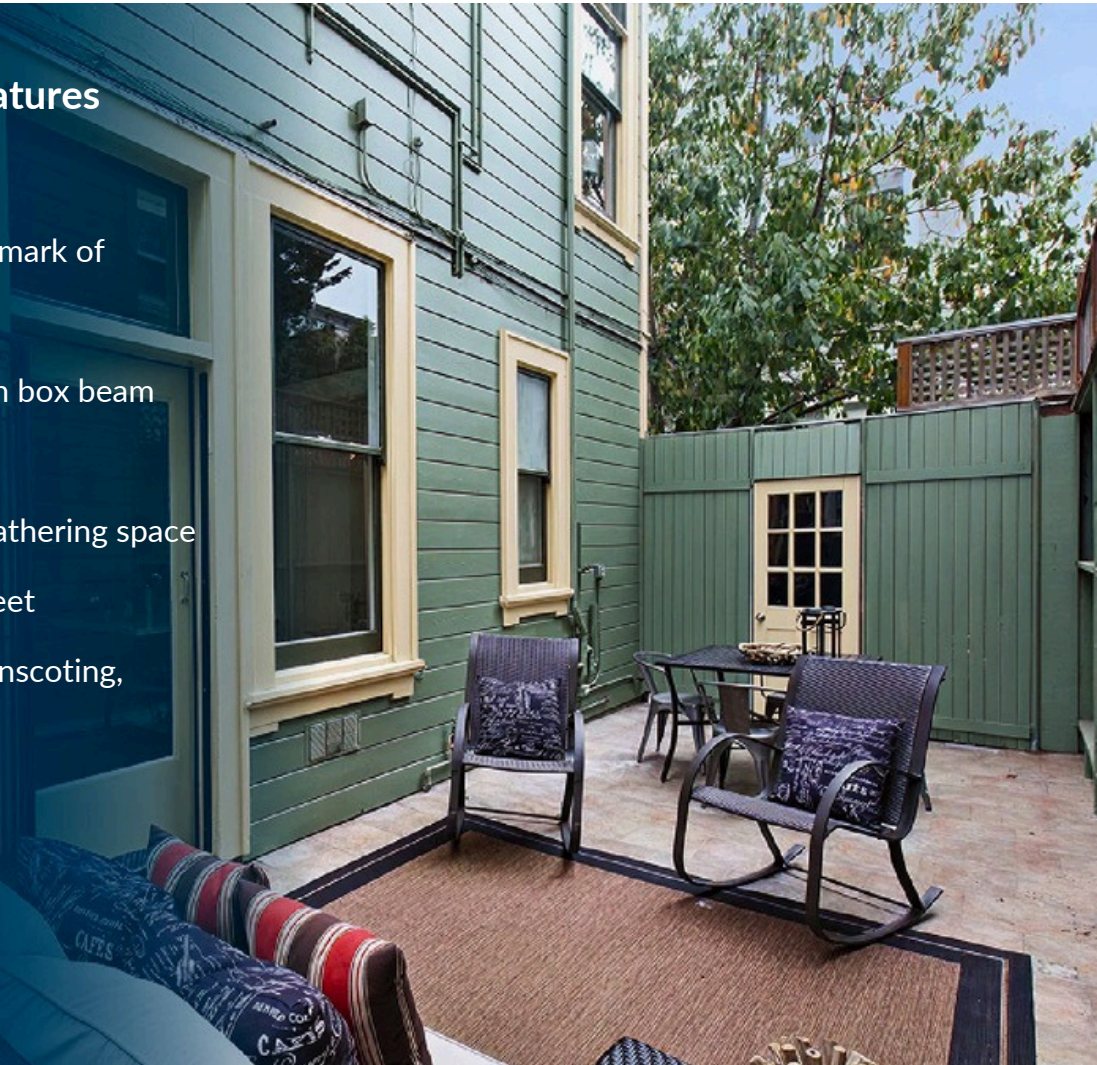






Unique Victorian Features

- Triple parlor layout: hallmark of grand Victorian design
- Formal dining room with box beam ceilings
- Spacious cooking and gathering space
- High ceilings up to 14 feet
- Egg & dart molding, wainscoting, wood floors
- Private patio



Prime Central Location

- 97 Walk Score | 100 Transit Score
- Steps to Market St & Van Ness corridors

Destination Retail & Dining

- Surrounded by boutique shops & national brands
- Renowned restaurant & bar scene
- Strong daily + weekend foot traffic

Coffee & Lifestyle Amenities

- Blue Bottle, Ritual Coffee, La Boulangerie nearby
- Patricia's Green park & public art
- Dense, affluent residential base

Connectivity

- Immediate access to MUNI + major arterials
- Minutes to Downtown, Civic Center & SoMa



251 Laguna Street

Hayes Valley, San Francisco, CA

I | P | G

Situated in the heart of one of San Francisco's most desirable neighborhoods, 251 Laguna Street offers a strategic setting within the vibrant and sophisticated urban landscape of Hayes Valley.

- **Vibrant Commercial and Cultural Hub:** Hayes Valley is a premier destination known for its high-end boutiques, world-class dining, and proximity to the city's performing arts center. Businesses at 251 Laguna Street benefit from high foot traffic, an affluent local demographic, and a reputation for trend-setting commerce.
- **Superior Transit and Walkability:** The property boasts an exceptional Walk Score, providing effortless access to multiple MUNI light rail lines, major bus routes, and the nearby Civic Center BART station. Its central location facilitates seamless connectivity to Market Street, the Financial District, and the broader Bay Area.
- **Premier Lifestyle Amenities:** The surrounding blocks feature a concentrated mix of amenities, including renowned cafes, artisan bakeries, and lush green spaces like Patricia's Green. This dynamic environment offers a perfect blend of professional utility and personal convenience, fostering a high quality of life for both employees and clients.

Experience the advantages of a quintessential San Francisco location at **251 Laguna Street**, positioning your venture for maximum visibility, style, and long-term growth.



For leasing information

Innovation Properties Group
1812nd Street, San Francisco, CA
www.ipgsf.com | CL 02031924

Ivan Smiljanic | Partner
510-717-5008 | ivan@ipgsf.com
BRE 1995999

Rocky Kile | Director
401-263-4218 | rocky@ipgsf.com
BRE 02233435

ipgsf.com

This document has been prepared by IPG for advertising and general information only. IPG makes no guarantees, representations or warranties of any kind, expressed or implied, regarding the information including, but not limited to, warranties of content, accuracy and reliability. Any interested party should undertake their own inquiries as to the accuracy of the information. IPG excludes unequivocally all inferred or implied terms, conditions and warranties arising out of this document and excludes all liability for loss and damages arising there from. This publication is the copyrighted property of IPG and/or its licensor(s). ©2026. All rights reserved.