

PROMINENT OFFICE SPACE AVAILABLE FOR LEASE



100 HADDONTOWNE COURT CHERRY HILL, NJ

Brian Goren
Senior Advisor
410.371.2208
brian.goren@wolfcre.com

Evan Zweben
Executive Vice President
856.261.5548
evan.zweben@wolfcre.com



The foregoing information was furnished to us by sources which we deem to be reliable, but no warranty or representation is made as to the accuracy thereof.
Subject to correction of errors, omissions, change of price, prior sale or withdrawal from market without notice.



Wolf Commercial Real Estate
www.WolfCRE.com



PROPERTY DESCRIPTION

Location: 100 Haddontowne Court
Cherry Hill, NJ 08034

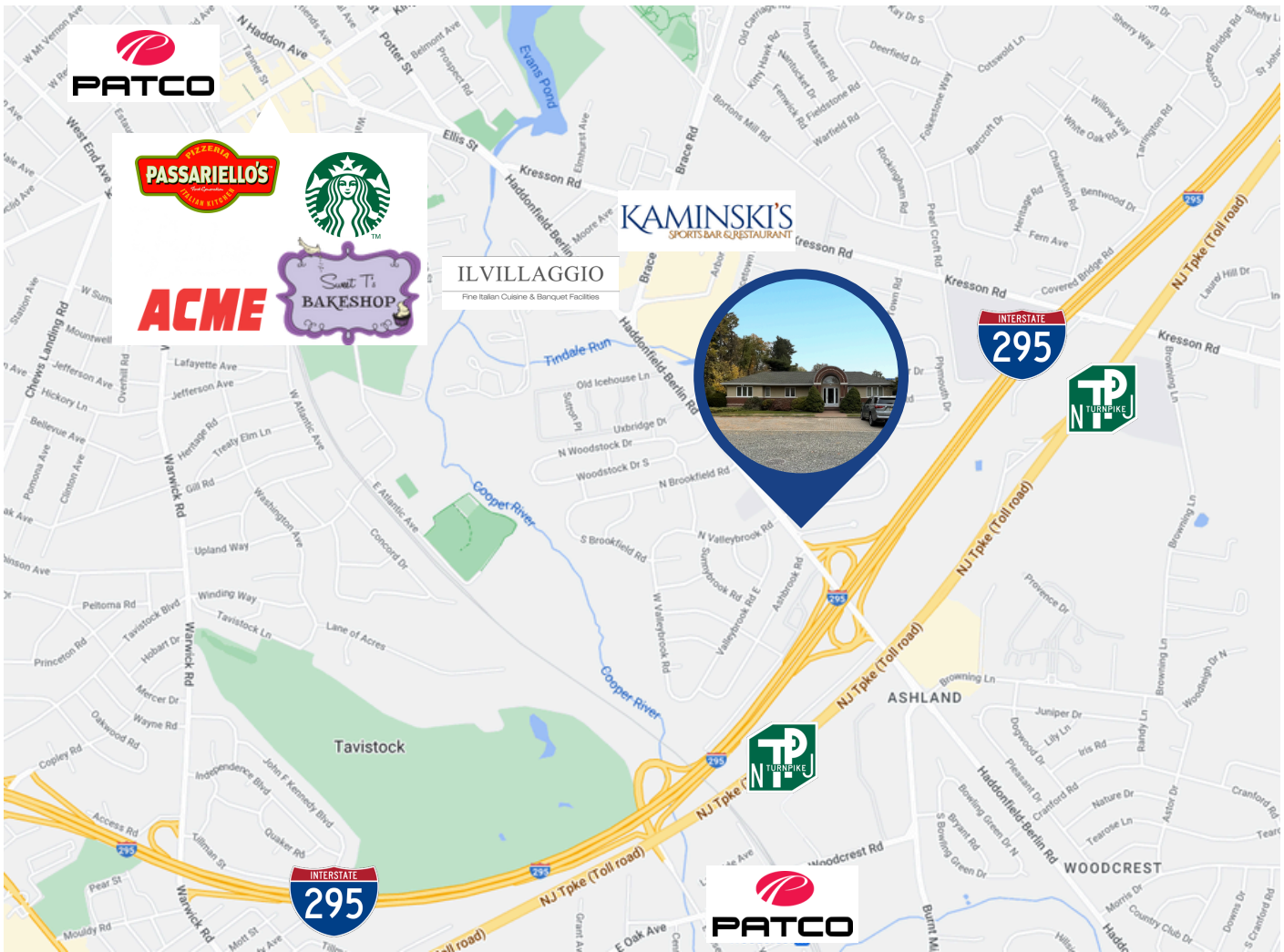
Size/SF: +/- 1,180 SF Total

Lease Price: \$3,500/mo

PROPERTY AREA/HIGHLIGHTS

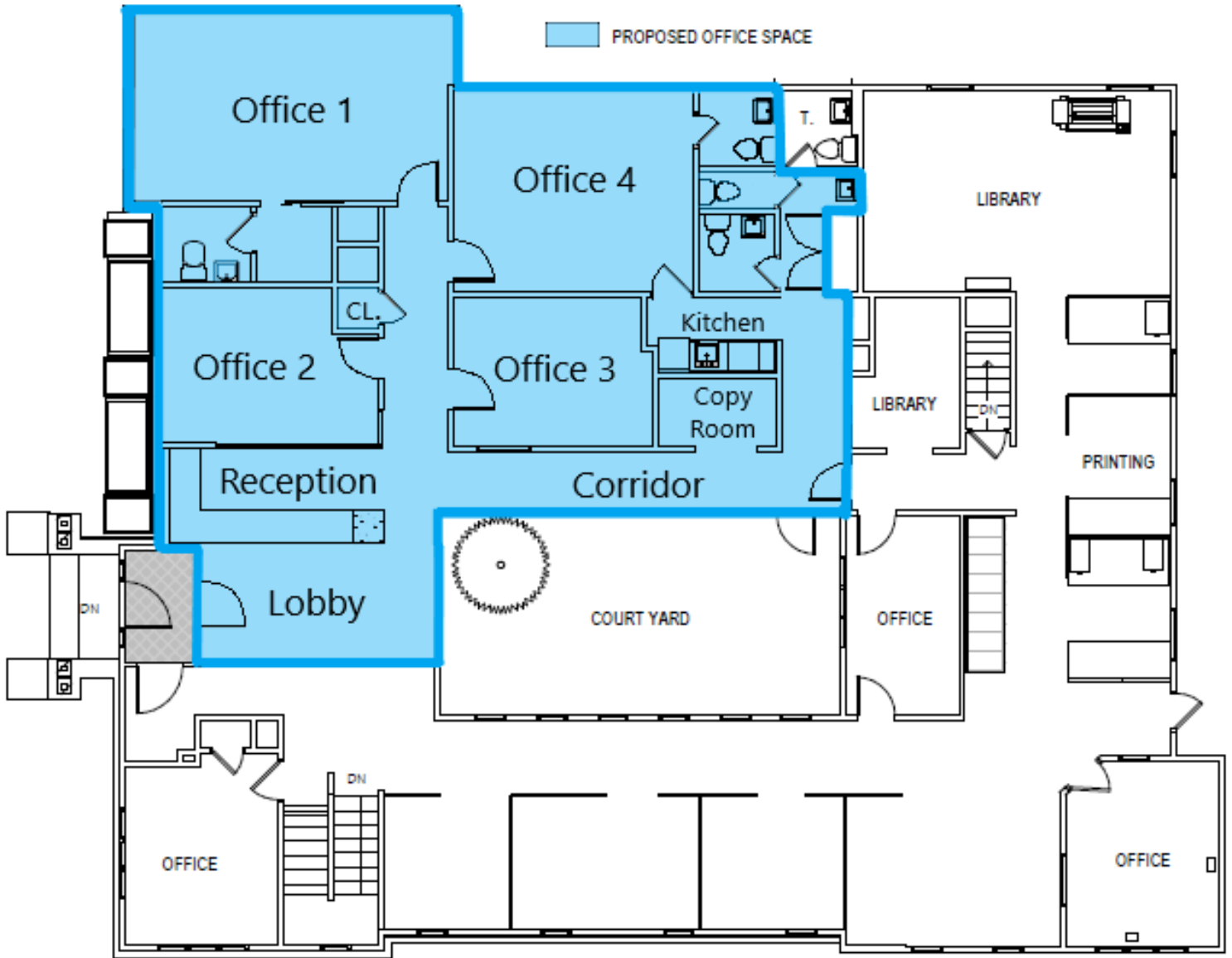
- Ideal for professional office users
- Four (4) private offices
- Two (2) restrooms in private offices
- Open reception and waiting area
- Kitchenette and two (2) public bathrooms
- Storage closet
- Shared courtyard
- Ample parking
- Direct access to I-295 and NJ Turnpike
- Close proximity to prominent Downtown Haddonfield and Woodcrest PATCO Station

AERIAL MAP



The foregoing information was furnished to us by sources which we deem to be reliable, but no warranty or representation is made as to the accuracy thereof. Subject to correction of errors, omissions, change of price, prior sale or withdrawal from market without notice.

FLOOR PLAN



The foregoing information was furnished to us by sources which we deem to be reliable, but no warranty or representation is made as to the accuracy thereof. Subject to correction of errors, omissions, change of price, prior sale or withdrawal from market without notice.

ADDITIONAL IMAGES



The foregoing information was furnished to us by sources which we deem to be reliable, but no warranty or representation is made as to the accuracy thereof. Subject to correction of errors, omissions, change of price, prior sale or withdrawal from market without notice.