



2201 MEDICAL PLAZA

2201 MURPHY AVE
NASHVILLE, TN



PROPERTY OVERVIEW

Welcome to 2201 Medical Plaza, a prominent 4-story medical office building located at the corner of Murphy Ave and 22nd Ave North on the Centennial Medical Center Campus. Conveniently connected to the entire Centennial campus, the building offers a variety of amenities, including a cafeteria, valet parking, surface and garage parking, and on-site security and property management. Situated in the heart of the hospital district and adjacent to Centennial Women's and Children's Hospital, this location provides seamless access to healthcare services. Additionally, tenants benefit from a generous Tenant Improvement Allowance and proximity to several referring physicians on campus.



PROPERTY HIGHLIGHTS

BUILDING 95,817 SF | 4 Stories

PARKING Garage + Surface | Valet

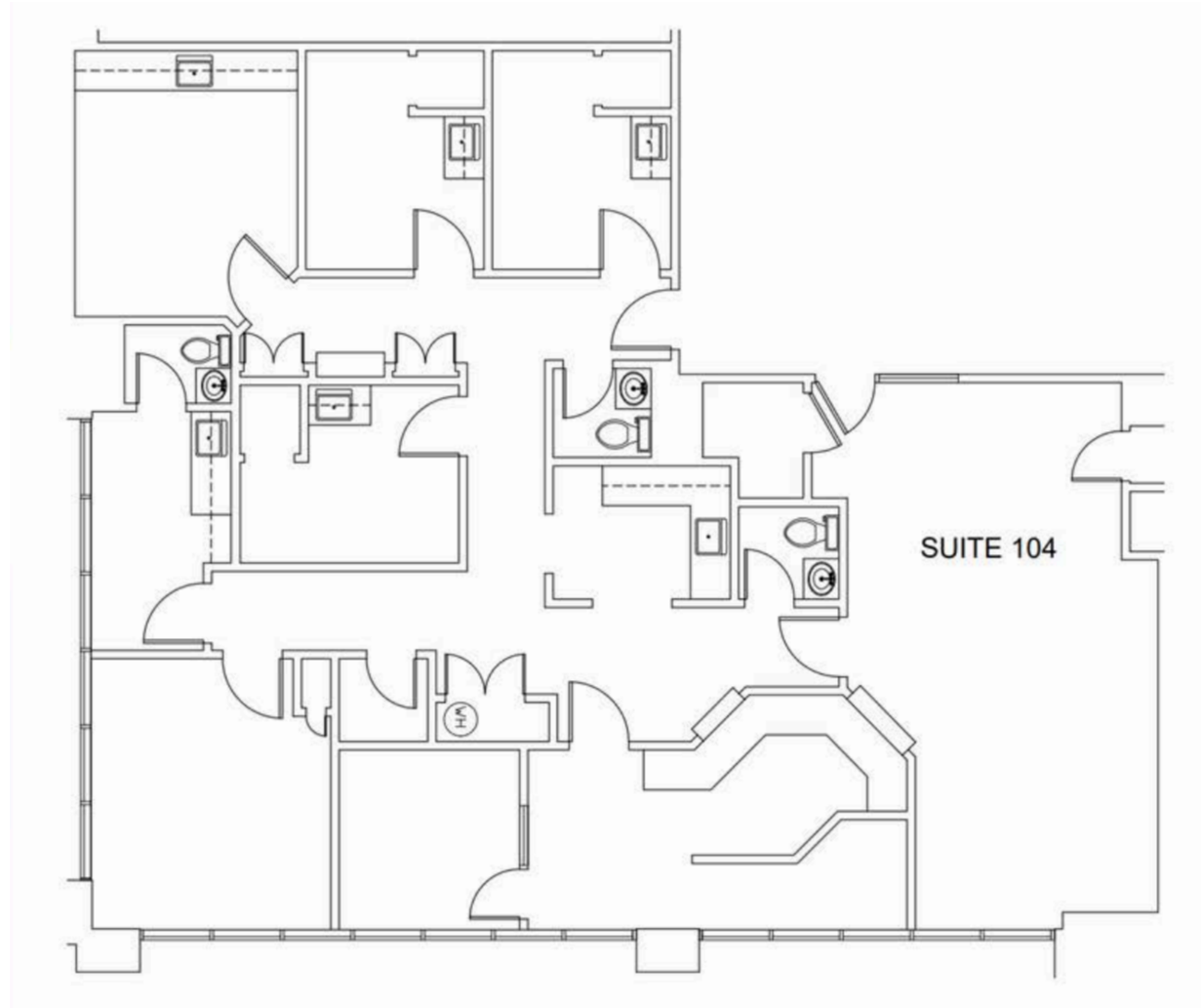
YEAR BUILT 1987 | Renovated in 2012

LOCATION Located on the corner of Murphy Ave and 22nd Ave North on the Centennial Medical Center Campus

SUITE 104

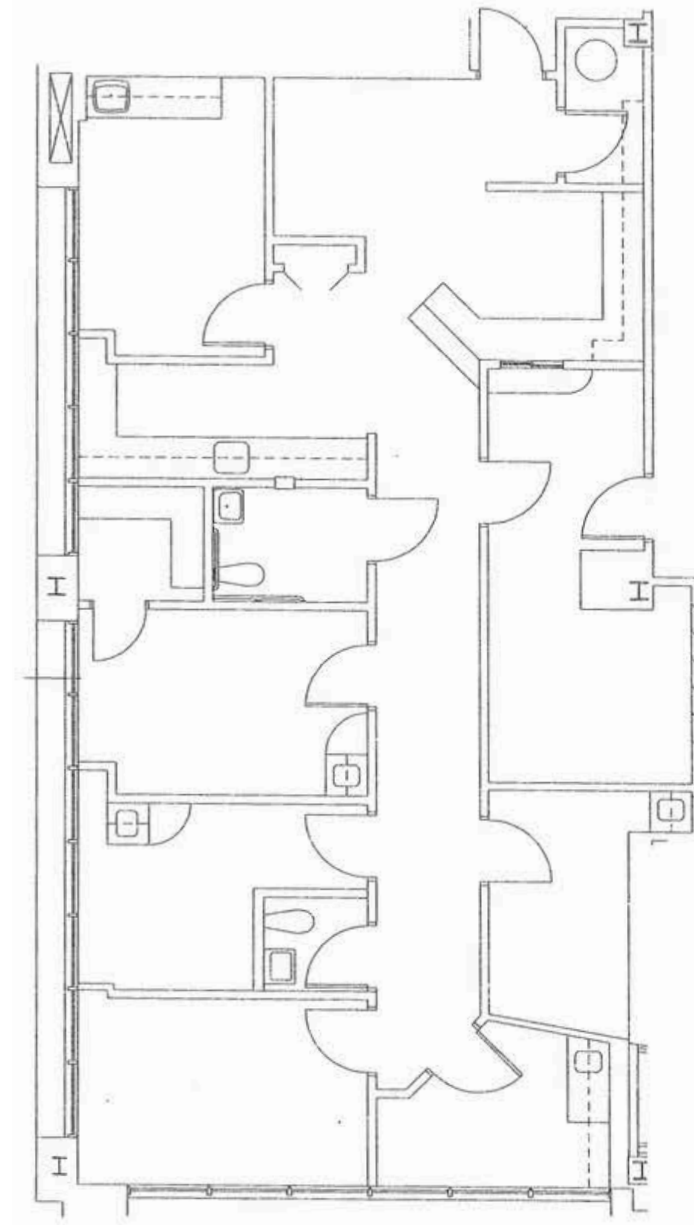
SUITE 104 | 2,307 RSF

SCAN FOR A
VIRTUAL TOUR!



SUITE 106

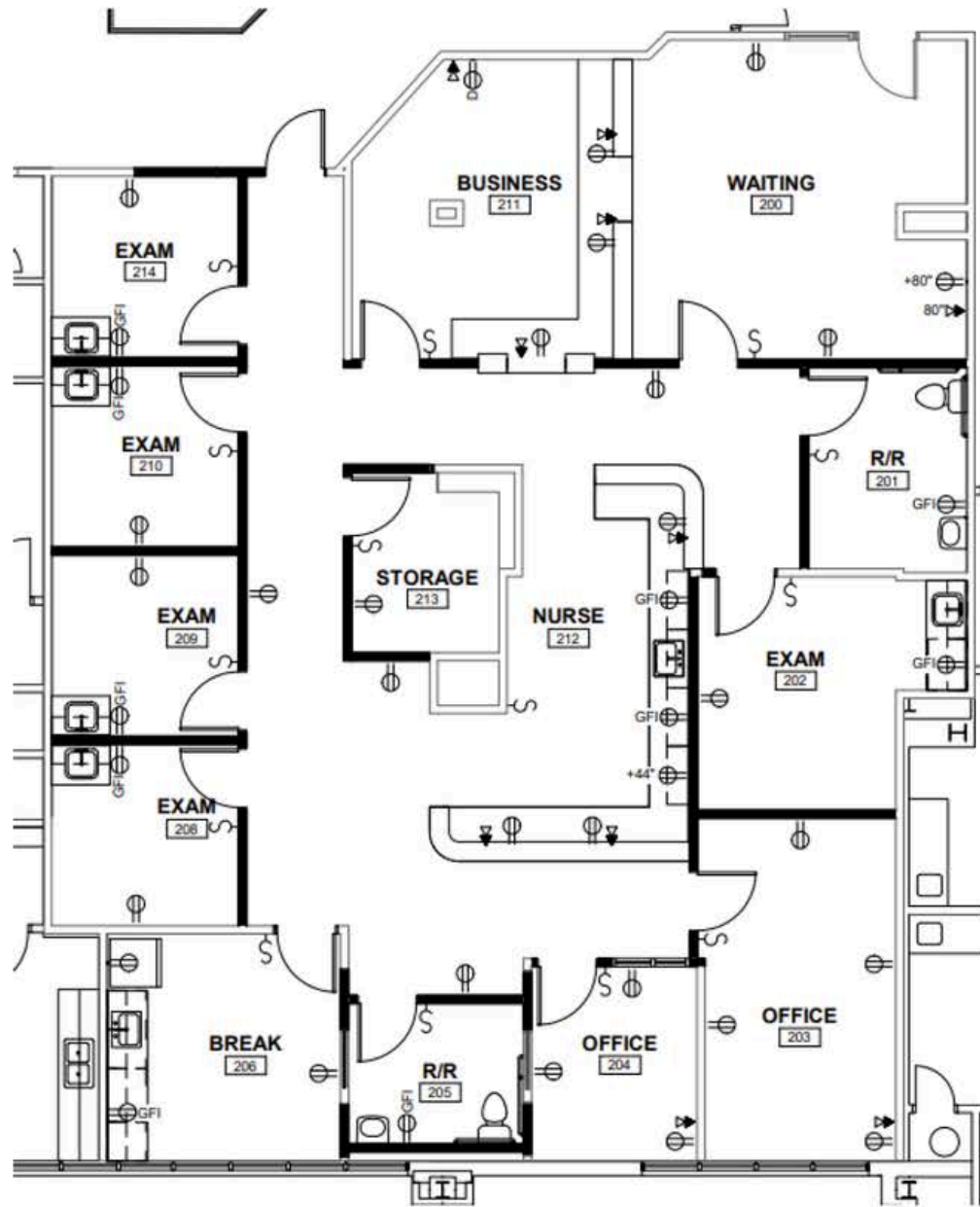
SUITE 106 | 1,753 RSF



SUITE 205

SUITE 205 | 2,904 RSF

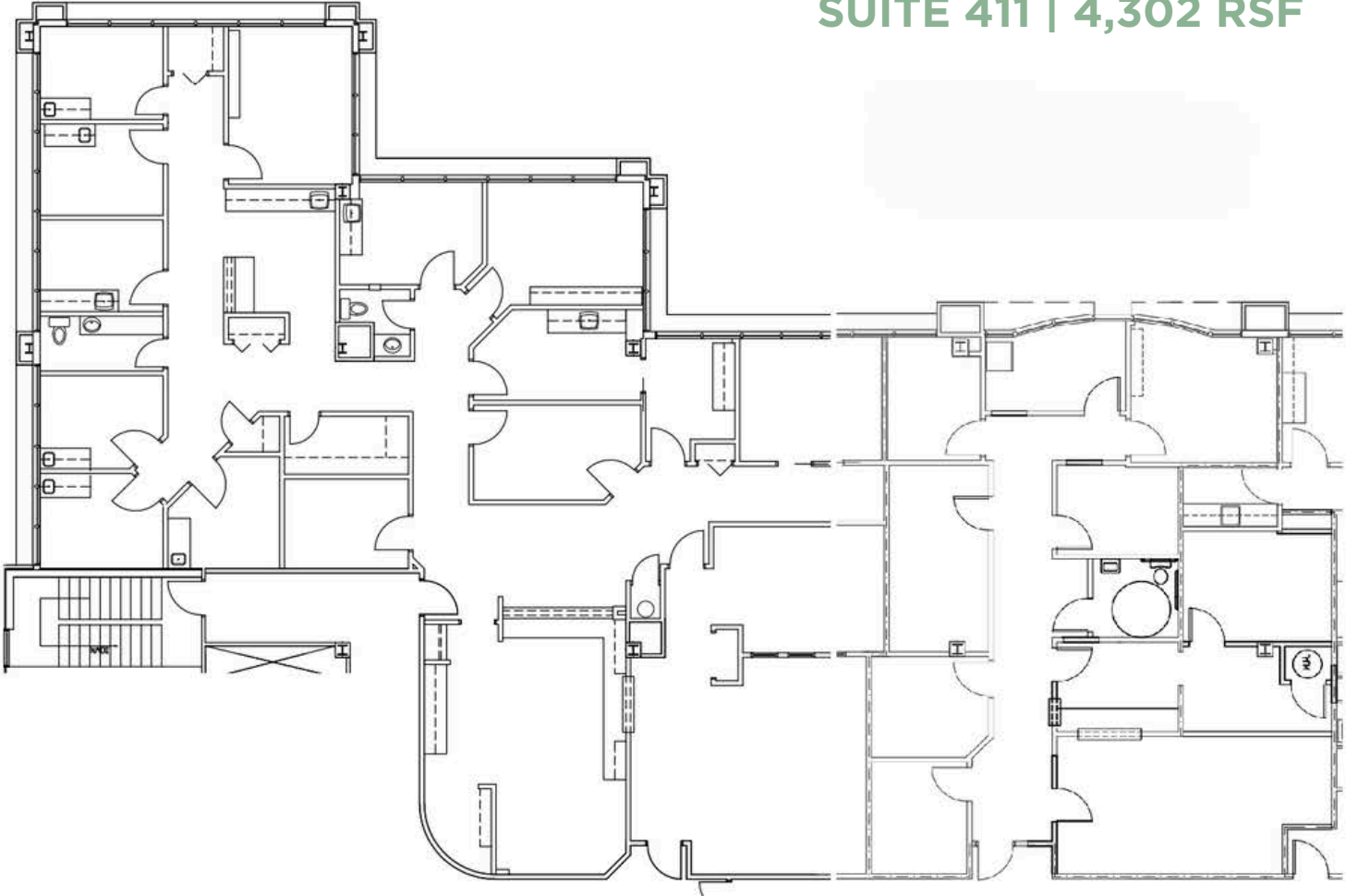
SCAN FOR A
VIRTUAL TOUR!



2201 MEDICAL PLAZA

SUITE 411

SUITE 411 | 4,302 RSF



AREA OVERVIEW



AREA OVERVIEW

CENTENNIAL MEDICAL CENTER CAMPUS

TriStar Centennial Medical Center's 43-acre campus is home to TriStar Centennial Heart & Vascular Center, TriStar Centennial Women's Hospital, TriStar Centennial Children's Hospital, Sarah Cannon Cancer Institute at TriStar Centennial Medical Center, TriStar Centennial Advanced Joint Replacement Institute and TriStar Centennial Parthenon Pavilion.

PROXIMITY TO HEALTHCARE

- TriStar Centennial Medical Center, a 741-bed hospital, offers a wide range of medical and surgical specialties, including 24-hour emergency care, behavioral health services, heart and vascular care, imaging, neurosciences, oncology, pediatrics, rehabilitation, sleep disorder treatment, and women's services.
- Ascension Saint Thomas Hospital Midtown is a comprehensive facility with 24/7 emergency care, heart and vascular services, orthopedics, cancer care, maternal and fetal medicine, and breast health services.
- Vanderbilt University Medical Center stands as the largest healthcare institution in the Mid-South region, renowned for its research, teaching, and patient care services.





**HOLLADAY
PROPERTIES**

Healthcare Real Estate

At Holladay Properties, we redefine excellence in healthcare real estate. As industry leaders, we drive growth, creating valuable opportunities for both you and your communities.

HOLLADAYPROPERTIES.COM



**PARTNER WITH US
TODAY!
SCAN HERE!**



CONTACT US TODAY!

Chad DeRossett, CCIM

**VICE PRESIDENT OF BROKERAGE SERVICES
CDEROSSETT@HOLLADAYPROPERTIES.COM**

615-604-0885

Matt Siedow

**ASSOCIATE BROKER - HEALTHCARE
MSIEDOW@HOLLADAYPROPERTIES.COM**

651-236-7725

