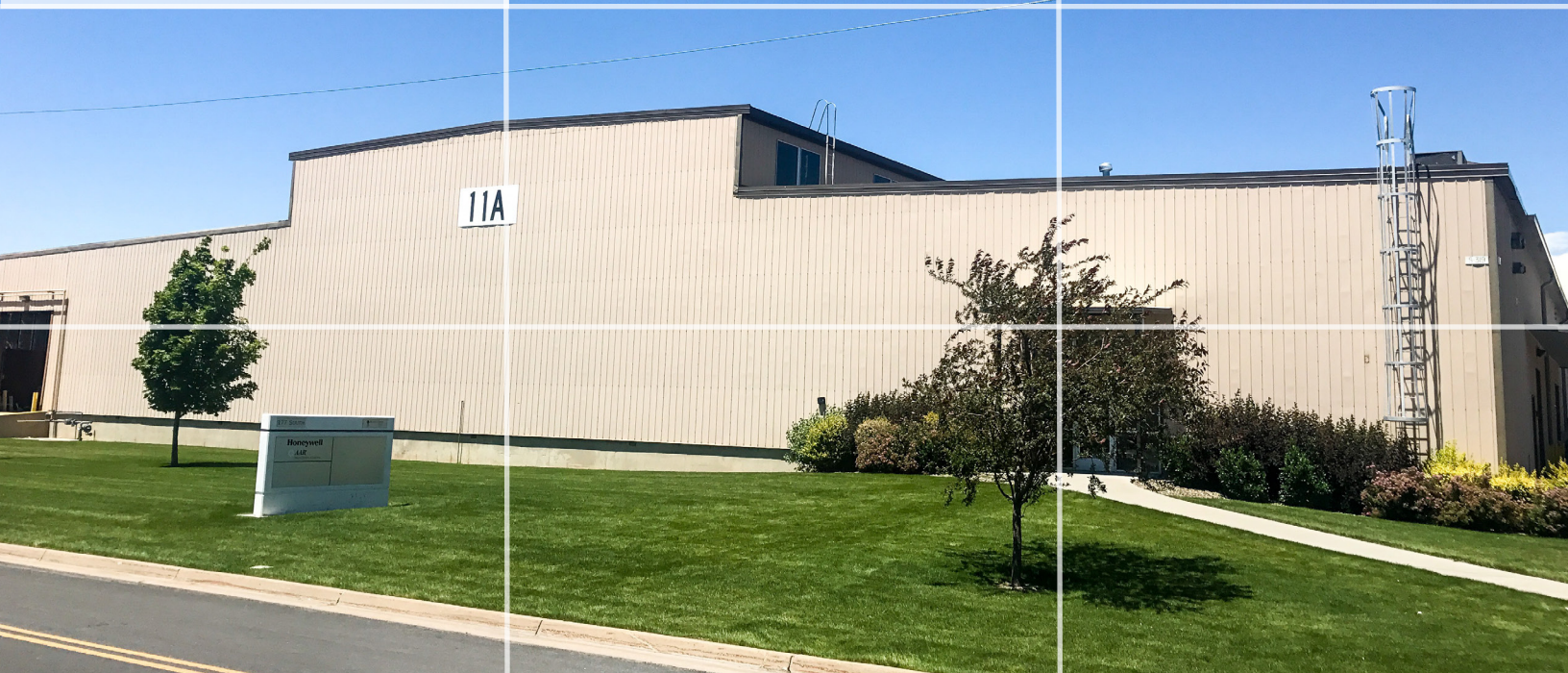




BUSINESS DEPOT  
*Ogden*



## BUILDING 11A

177 South 930 West | Ogden, UT

### BUILDING SPECS

Steel Sided, Wood Frame Construction

267,540 Square Foot Total

6 - 44,590 Square Foot Bays

Built 1942

6" Minimum Floors

Hanging Gas Heat

208 Volt 3 Phase Power

60'x20' - Column Spacing

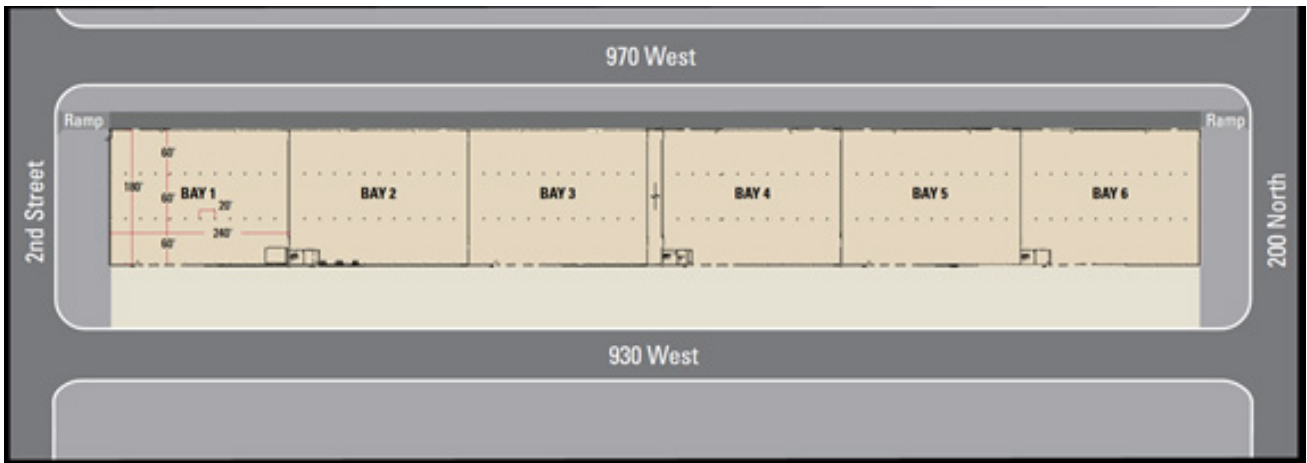
14" - 22'6" Clear Height

31 - 8'x10' Dock Doors

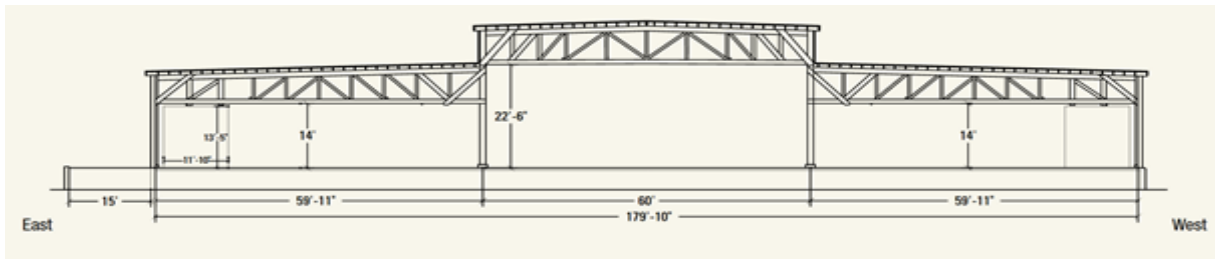
Fire Protection - Ordinary Hazard



**FLOOR PLAN**



**ELEVATION**



**TYPICAL BAY**

