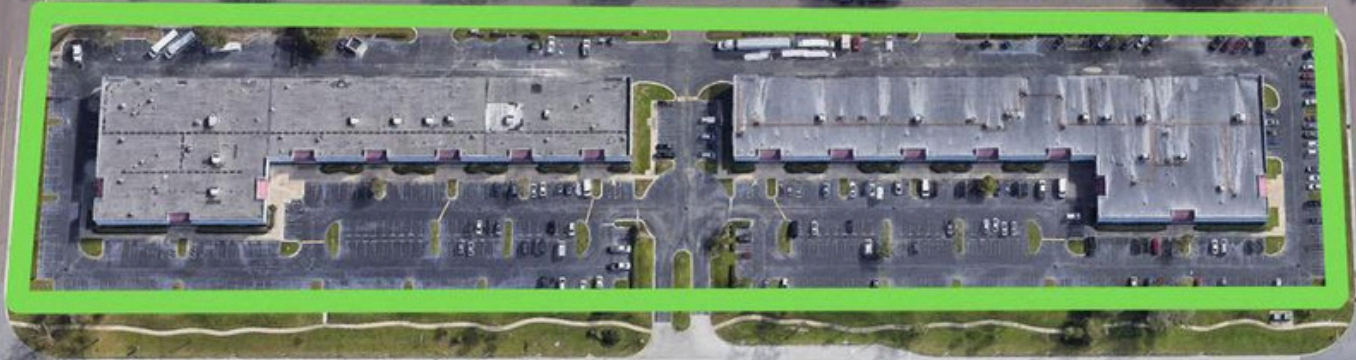


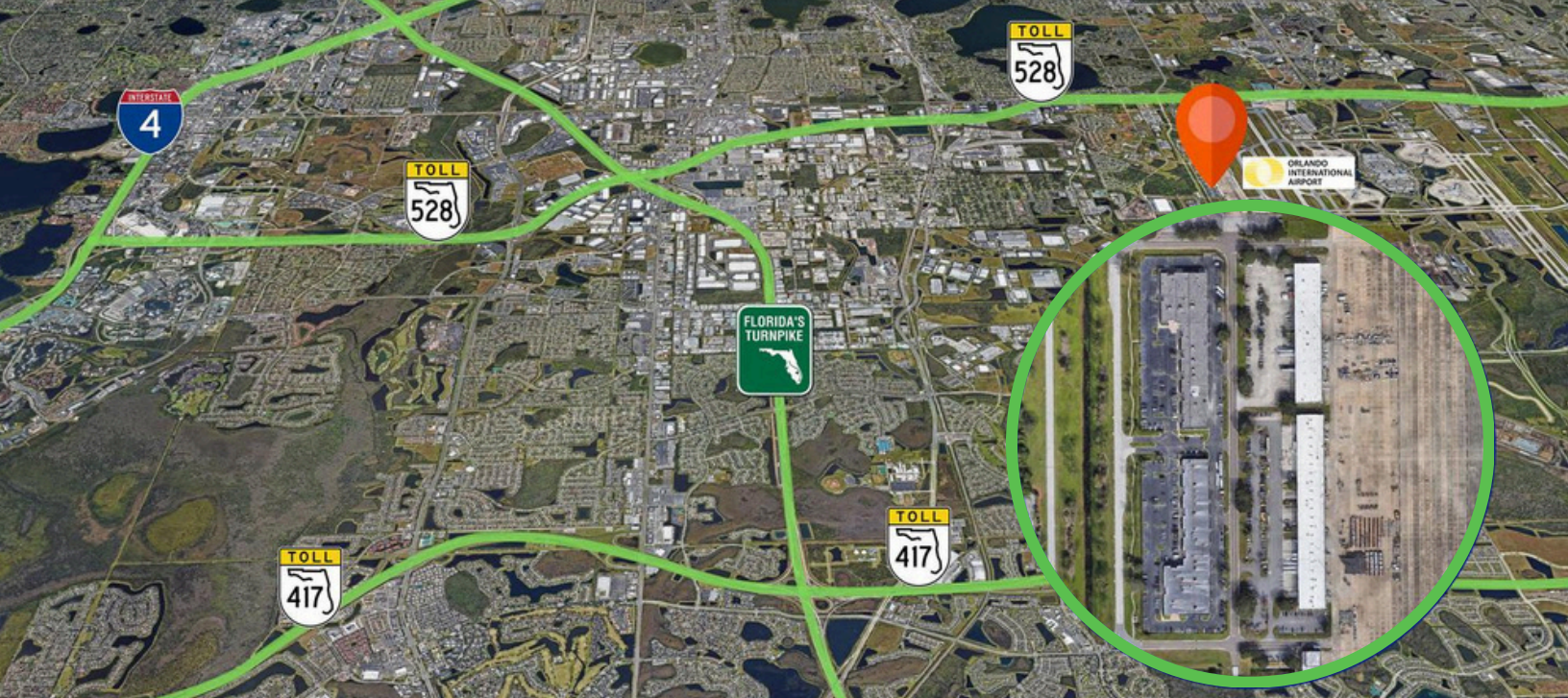
**FOR  
LEASE**



**Availability from 12,500 SF to 29,000 SF**  
**9403 & 9677 TRADEPORT DR.**  
**ORLANDO, FL 32827**







## GENERAL INFORMATION

Building located in Free Trade Zone on Orlando International Airport Property (GOAA)

Two Buildings 55,555 sf each

Loading: Grade Level

Clear Height: 18'

## PRIME LOCATION

Located on airport property with outstanding access to the:

- Turnpike
- SR 528 and SR 417

## NORTH BUILDING

<b>Suite 9403:</b>	25,095 sf in shell condition
<b>Min. Contiguous:</b>	12,000 sf
<b>Rental Rate:</b>	From \$14.95 psf
<b>Opex:</b>	\$2.75

## SOUTH BUILDING

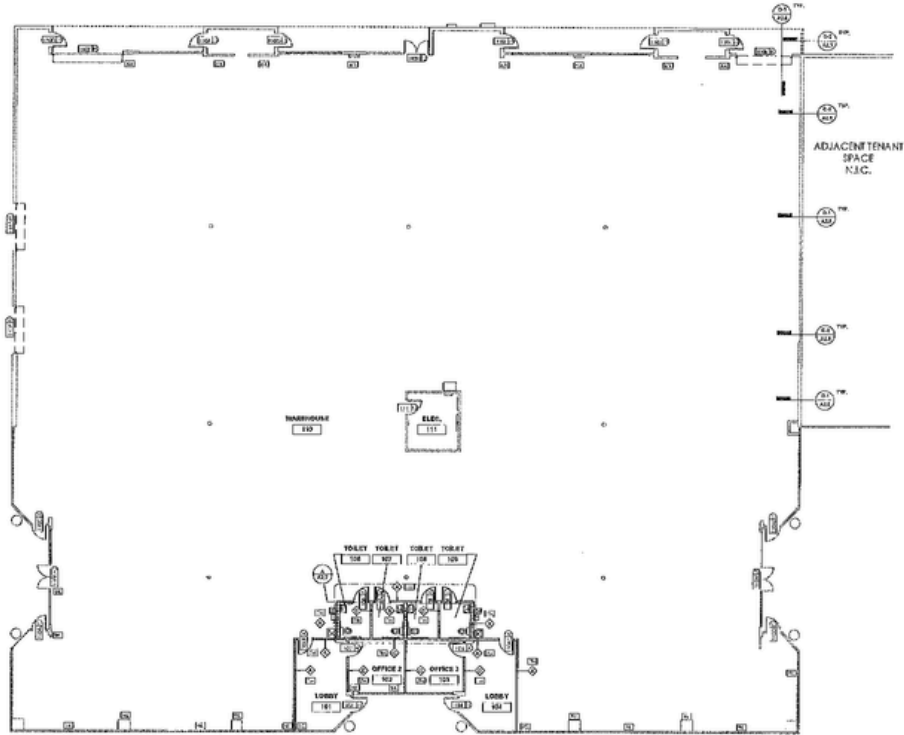
<b>Suite 9677:</b>	29,093 sf of which 859 is unairconditioned warehouse
<b>Rate:</b>	From \$14.95 psf plus \$2.75 in opex
<b>Min. divisible:</b>	Approximately 10,000 SF

## SHER TOLAN, SIOR

407-810-2291  
 stolan@allied-comm.com  
 5401 S Kirkman Rd. Suite  
 310 Orlando, FL 32819  
 www.allied-comm.com

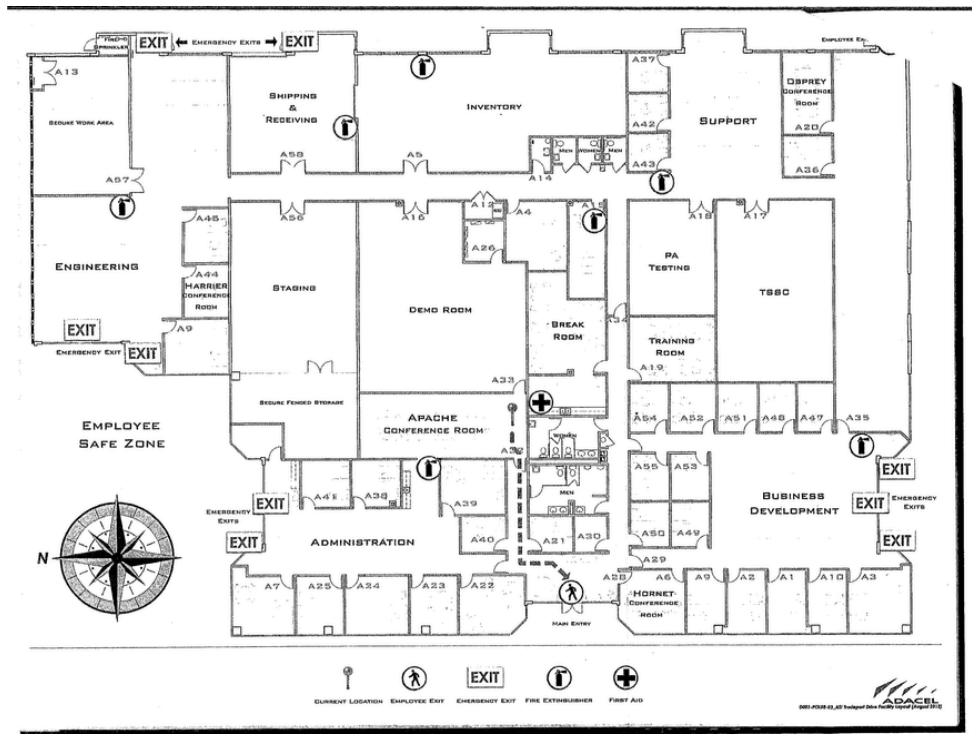


**SUITE 9403**  
 25,095 SF  
 B-T-S Office

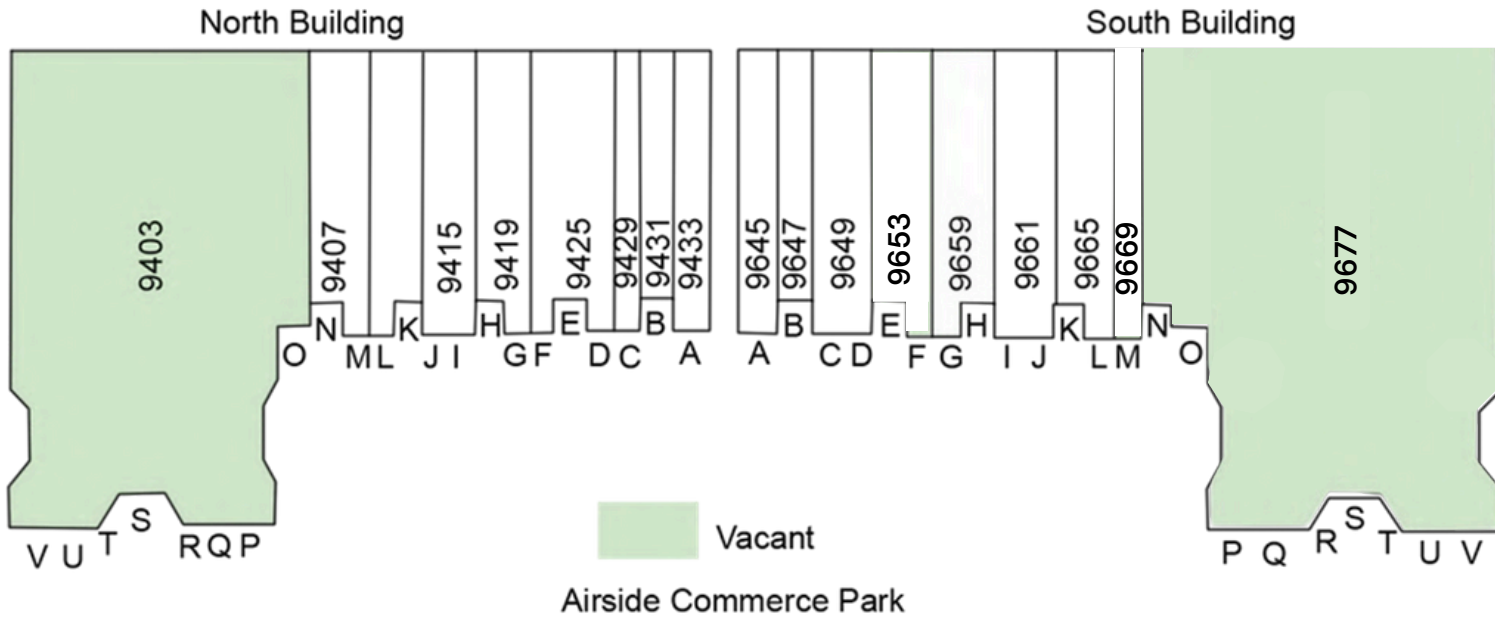


**SUITE 9677**

29,093 SF  
 859 SF non-AC Warehouse



# Airside Commerce Park



This information has been obtained from sources believed reliable, but has not been verified for accuracy or completeness. You should conduct a careful, independent investigation of the property and verify all information. Any reliance on this information is solely at your own risk. Allied Commercial and the Allied Commercial logo are service marks of Allied Commercial Partners, LLC. All other marks displayed on this document are the property of their respective owners. Photos herein are the property of their respective owners. Use of these images without the express written consent of the owner is prohibited.

**SHER TOLAN, SIOR**

407-810-2291

stolan@allied-comm.com

5401 S Kirkman Rd. Suite 310

Orlando, FL 32819

www.allied-comm.com

