



ILLINOIS MEDICAL DISTRICT



# 2225 West Harrison

Chicago, IL 60612



**7,555 RSF Lab Space Available  
in the Illinois Medical District**

August 2023





ILLINOIS MEDICAL DISTRICT



# Suite 105 – 7,555 SF

[Click for Virtual Tour](#)

## Amenities



Shared  
Conference  
Rooms



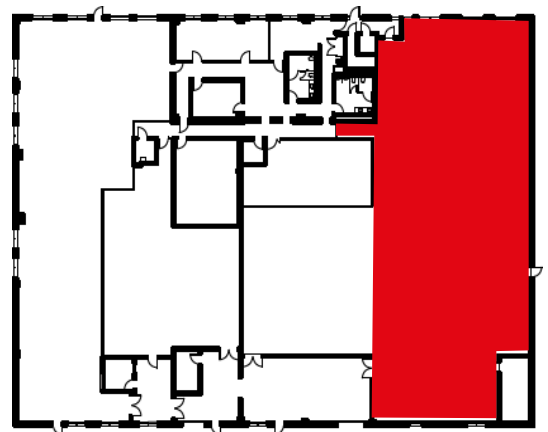
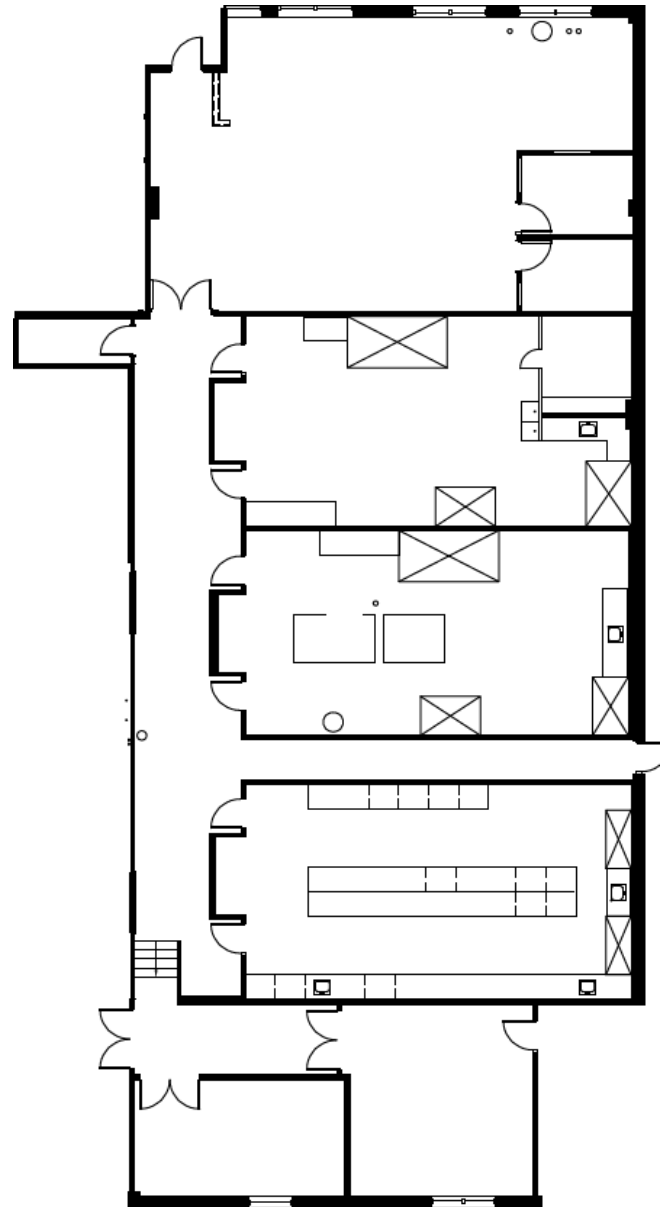
Contiguous  
Lab Space



Ample  
Parking



Located in  
Illinois Medical  
District



North



# Move-in Ready for Lab Use

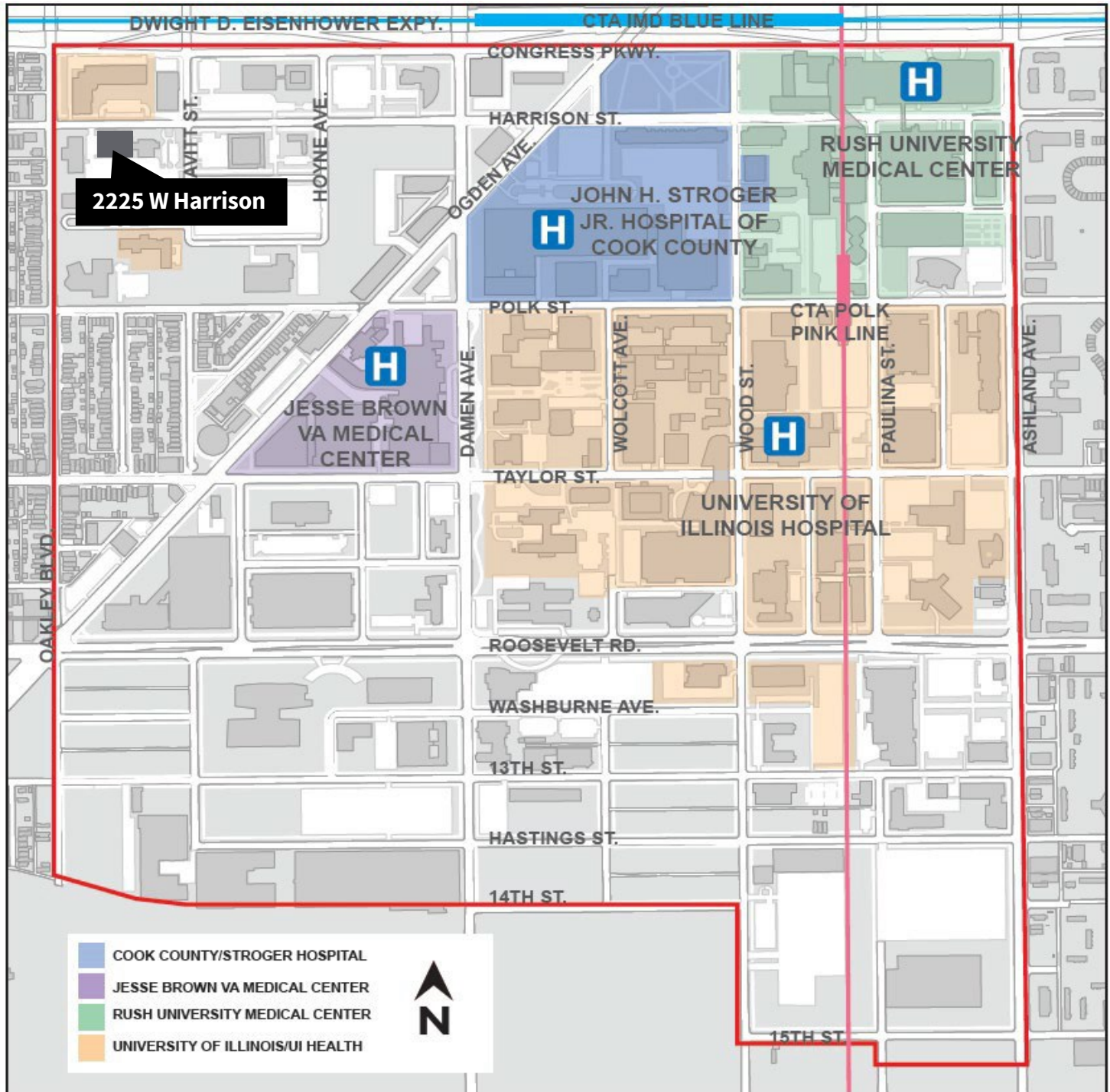
- **Benchtop space suitable for tenant specific benchtop equipment**
- **2 Hamilton Safeaire Benchtop Hoods**
- **4 Hamilton Safeaire Walk in Hoods**
- **2 Labconco Walk in Hoods**
- **1 Double Slop Sink**
- **1 Emergency Shower**
- **1 Eye Wash Station**
- **1 AED**
- **1,127 SF temperature controlled shared loading area**
  - **1 raised loading dock door**
  - **1 grade drive in door**
- **Existing Power Supply = 480V 3 Phase**
- **Sprinkler riser**
- **20 Surface Spaces Available**

## Building Overview

SIZE	21,658 SF / 2 Stories
CLASS	B
FLOOR SIZE	20,055 SF
PARKING	1.25 per 1,000 RSF
PROXIMITY TO TRANSIT	Close to Pink and Blue CTA Lines and I-290



# Illinois Medical District Area Overview



**Max Zwolan** | Senior Vice President, JLL  
+1 734 255 5810 | [max.zwolan@jll.com](mailto:max.zwolan@jll.com)

**John Jodoin** | Associate, JLL  
+1 847 910 3123 | [john.jodoin@jll.com](mailto:john.jodoin@jll.com)

**Sarah Ware** | Founder and CEO, Ware Realty Group, LLC  
+1 312 376 1448 x101 | [sarah@warerealtygroup.com](mailto:sarah@warerealtygroup.com)

Jones Lang LaSalle Midwest LLC, a licensed real estate broker across the US |  
200 East Randolph Street, Suite 4300, Chicago, IL 60608

Although information has been obtained from sources deemed reliable, JLL does not make any guarantees, warranties or representations, express or implied, as to the completeness or accuracy as to the information contained herein. Any projections, opinions, assumptions or estimates used are for example only. There may be differences between projected and actual results, and those differences may be material. JLL does not accept any liability for any loss or damage suffered by any party resulting from reliance on this information. If the recipient of this information has signed a confidentiality agreement with JLL regarding this matter, this information is subject to the terms of that agreement. ©2025. Jones Lang LaSalle IP, Inc. All rights reserved.