

4,338 SF FREESTANDING BUILDING



66038 - 66040 Pierson Blvd

Desert Hot Springs, CA 92240

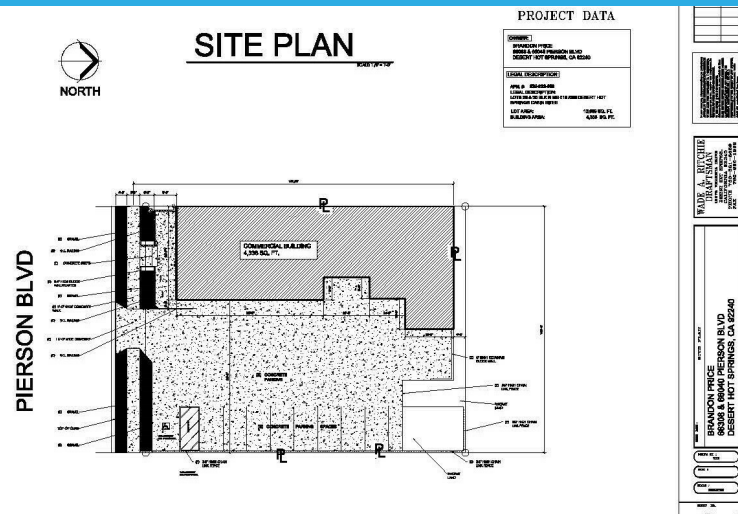
- \$ Price:** \$650,700
- ↕ Building Area:** 4,338 SF
- 🏢 Property Type:** Freestanding / Multi-Tenant
- 📍 Site Area:** - 13,068 SF
- 📏 Frontage:** - 62' on Pierson Blvd
- 🏘️ Zoning:** C2
- 📍 Location:** Retail repositioning opportunity
- 🏠 Property Use:** Owner/User or Investment
- P Parking:** - Surface - 10 spots

Demographics

	1 MILE	3 MILES	5 MILES
TOTAL POPULATION	14,916	40,850	47,042
AVG. HH INCOME	\$79,036	\$75,569	\$70,989
TOTAL EMPLOYEES	1,386	3,360	3,733

Traffic

PALM DR	24,191/VPD
---------	------------



Mark Brecheen

909.243.7618

mbrecheen@naicapital.com

CA DRE #01067898

No warranty, express or implied, is made as to the accuracy of the information contained herein. This information is submitted subject to errors, omissions, change of price, rental or other conditions, withdrawal without notice, and is subject to any special listing conditions imposed by our principals. Cooperating brokers, buyers, tenants and other parties who receive this document should not rely on it, but should use it as a starting point of analysis, and should independently confirm the accuracy of the information contained herein through a due diligence review of the books, records, files and documents that constitute reliable sources of the information described herein. Logos are for identification purposes only and may be trademarks of their respective companies. NAI Capital Commercial, Inc. CAL DRE Lic. #02130474

66038 - 66040 Pierson Blvd

Desert Hot Springs, CA 92240



Mark Brecheen

909.243.7618

mbrecheen@naicapital.com

CA DRE #01067898

No warranty, express or implied, is made as to the accuracy of the information contained herein. This information is submitted subject to errors, omissions, change of price, rental or other conditions, withdrawal without notice, and is subject to any special listing conditions imposed by our principals. Cooperating brokers, buyers, tenants and other parties who receive this document should not rely on it, but should use it as a starting point of analysis, and should independently confirm the accuracy of the information contained herein through a due diligence review of the books, records, files and documents that constitute reliable sources of the information described herein. Logos are for identification purposes only and may be trademarks of their respective companies. NAI Capital Commercial, Inc. CAL DRE Lic. #02130474