

WAREHOUSE & OFFICES FOR LEASE

1000 E. DOMINGUEZ STREET | CARSON, CA 90746

LEE & ASSOCIATES

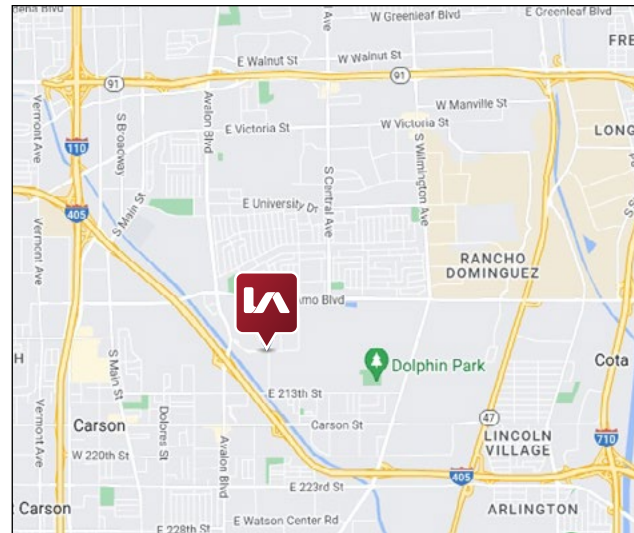
COMMERCIAL REAL ESTATE SERVICES

**LANDLORD MOTIVATED
NEW LEASE PRICING!**



PROPERTY SUMMARY

- Office warehouse spaces available, walking distance to South Bay Pavilion, IKEA, Target, 24 Hour Fitness, and plentiful restaurants and retail services (with shared kitchen)
- 1st Floor Office Suite 101, ±1,120 SF
1st Floor Warehouse Suite 120, ±3,000 SF
2nd Floor Office Suite 203, ±2,116 SF
- Warehouse: 20" Clearance with Electric Roll-up Door
- Lots of Glass Window Line
- Ample on-site and street parking available
- Convenient Access to 405, 110, & 91 Freeways



TYPE	UNIT	SF	ASKING RATE
Office	101	±1,120 SF	\$1.70 PSF MG + \$0.27 PSF CAM
Warehouse	120	±3,000 SF	\$1.90 PSF MG + \$0.15 PSF CAM
Office	203	±2,116 SF	\$1.70 PSF MG + \$0.27 PSF CAM

[Click to View 3D Matterport](#)

[Click to View 3D Matterport](#)

FOR MORE INFORMATION, PLEASE CONTACT:

YOUR LOCAL MARKET EXPERTS

JESSE A. LAIKIN, SIOR **PH: 310.965.1765**
Principal Emiritus | DRE# 00781096

PH: 310.965.1765
E: jlaikin@leelalb.com

Copyright © Lee & Associates. All rights reserved. No part of this work may be reproduced or distributed without written permission of the copyright owner. The information contained in this report was gathered by Lee & Associates from sources believed to be reliable. Lee & Associates, however, makes no representation concerning the accuracy or completeness of such information and expressly disclaims any responsibility for any inaccuracy contained herein. 1.29.23

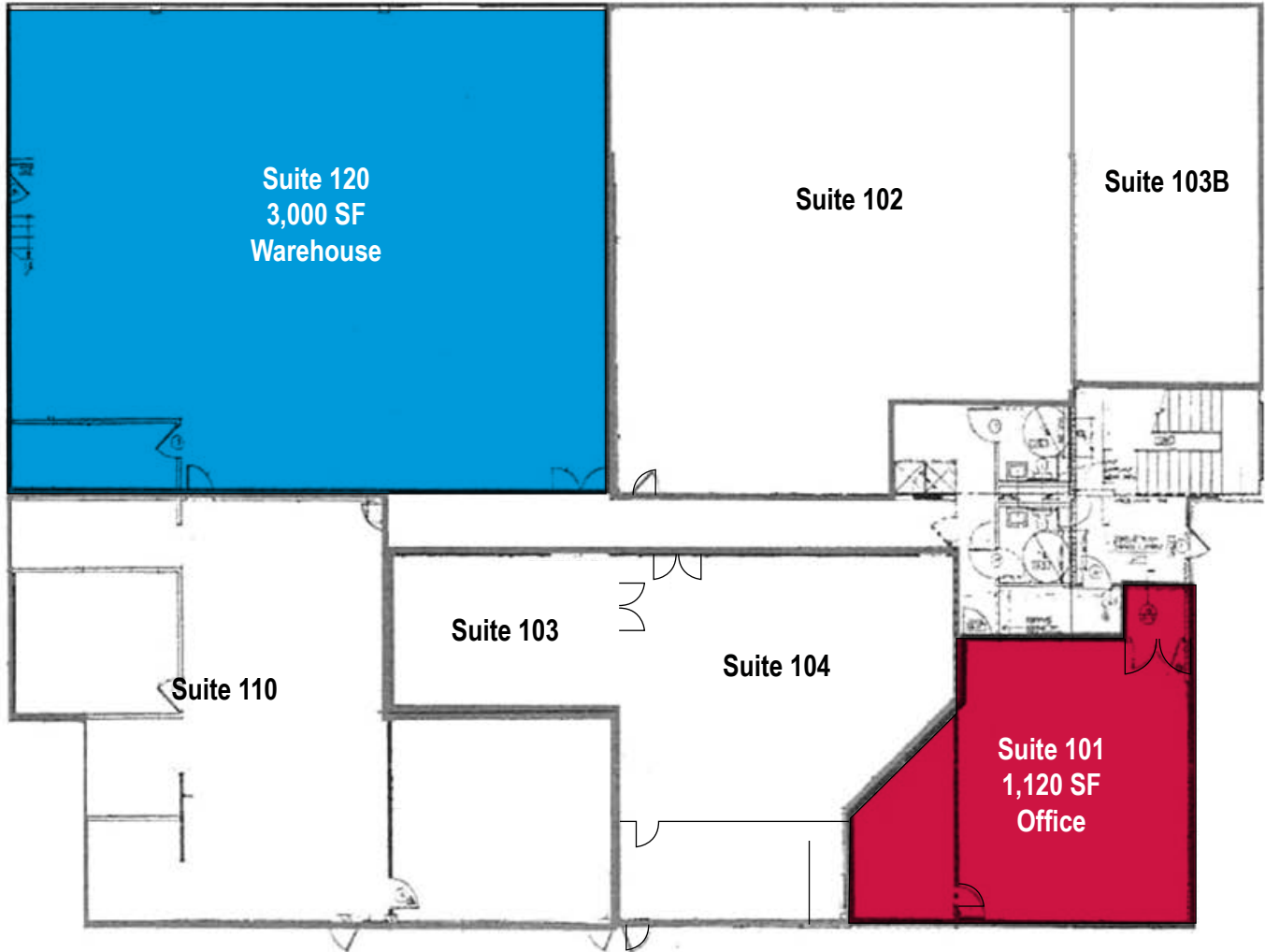
WAREHOUSE & OFFICES FOR LEASE




1000 E. DOMINGUEZ STREET | CARSON, CA 90746



COMMERCIAL REAL ESTATE SERVICES

FIRST FLOOR PLAN (NOT DRAWN TO SCALE)



-  - Suite 101
-  - Suite 120
-  - Suite 203 (Next Page)

FOR MORE INFORMATION, PLEASE CONTACT:

YOUR LOCAL MARKET EXPERTS

JESSE A. LAIKIN, SIOR 
Principal Emiritus | DRE# 00781096

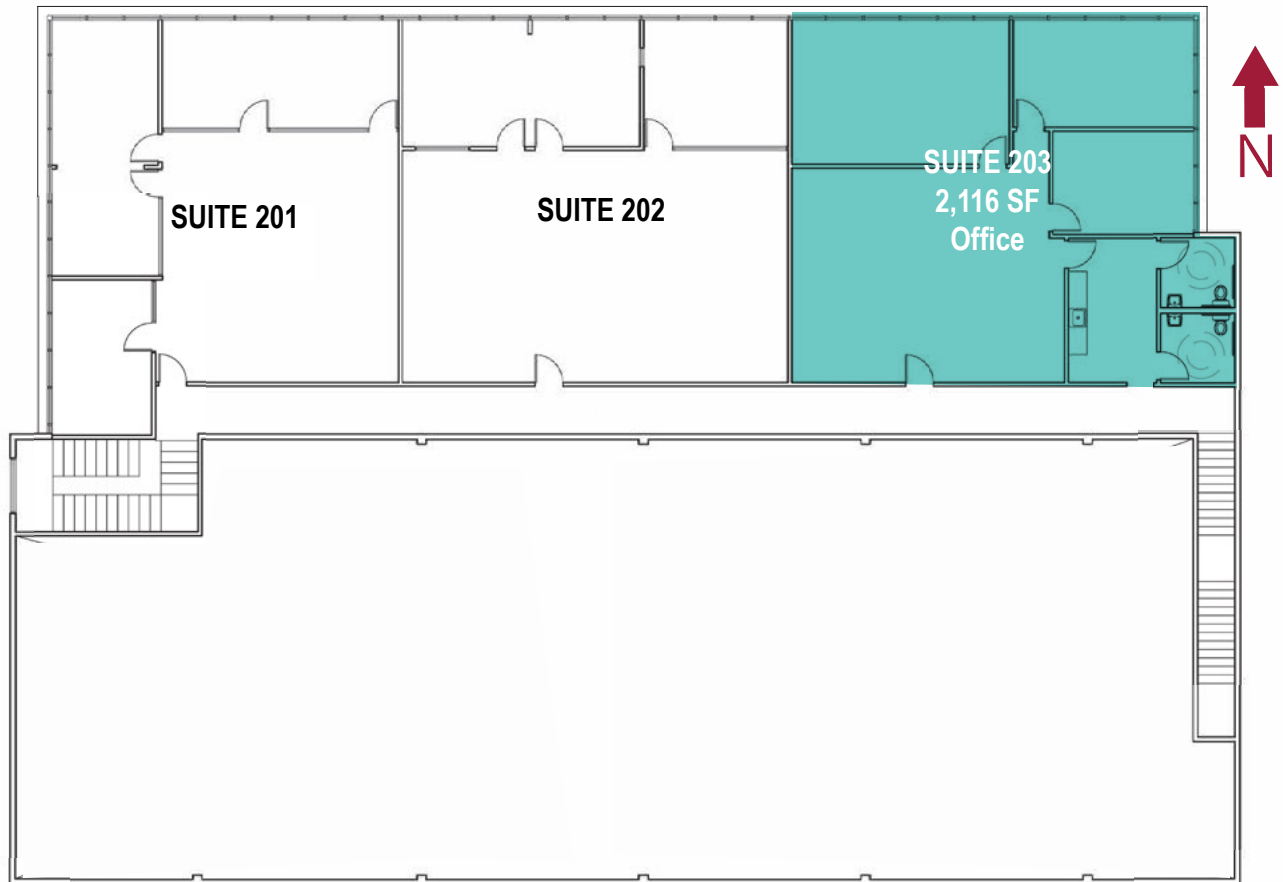
PH: 310.965.1765
E: jlaikin@leelalb.com

Copyright © Lee & Associates. All rights reserved. No part of this work may be reproduced or distributed without written permission of the copyright owner. The information contained in this report was gathered by Lee & Associates from sources believed to be reliable. Lee & Associates, however, makes no representation concerning the accuracy or completeness of such information and expressly disclaims any responsibility for any inaccuracy contained herein. 1.29.23

WAREHOUSE & OFFICES FOR LEASE

1000 E. DOMINGUEZ STREET | CARSON, CA 90746

SECOND FLOOR PLAN (NOT DRAWN TO SCALE)



FOR MORE INFORMATION, PLEASE CONTACT:

YOUR LOCAL MARKET EXPERTS

JESSE A. LAIKIN, SIOR  **PH: 310.965.1765**
Principal Emiritus | DRE# 00781096

E: jlaikin@leelalb.com

Copyright © Lee & Associates. All rights reserved. No part of this work may be reproduced or distributed without written permission of the copyright owner. The information contained in this report was gathered by Lee & Associates from sources believed to be reliable. Lee & Associates, however, makes no representation concerning the accuracy or completeness of such information and expressly disclaims any responsibility for any inaccuracy contained herein. 1.29.23