



111

Town Square Place



+67K RSF
SUBLEASE OPPORTUNITY

CBRE



AVAILABLE SPACE

Entire 10th Floor **38,340 RSF**

Partial 9th Floor **29,270 RSF**

Total **67,610 RSF**

SUBLEASE SPECIFICATIONS

Lease Expiration **April, 2028**

Possession **Arranged**

Furniture **Included**

Parking **50** (potential to be increased to 58)
with 7 reserved spaces

BUILDING FEATURES / AMENITIES

- Starbucks on site
- Bank of America Branch
- Restaurant

TRANSPORTATION

- Newport Pavonia PATH Station
- One PATH stop to Manhattan
- Light Rail stop with one stop to Hoboken Terminal

**HIGH-END
PLUG-AND-PLAY
OPPORTUNITY**

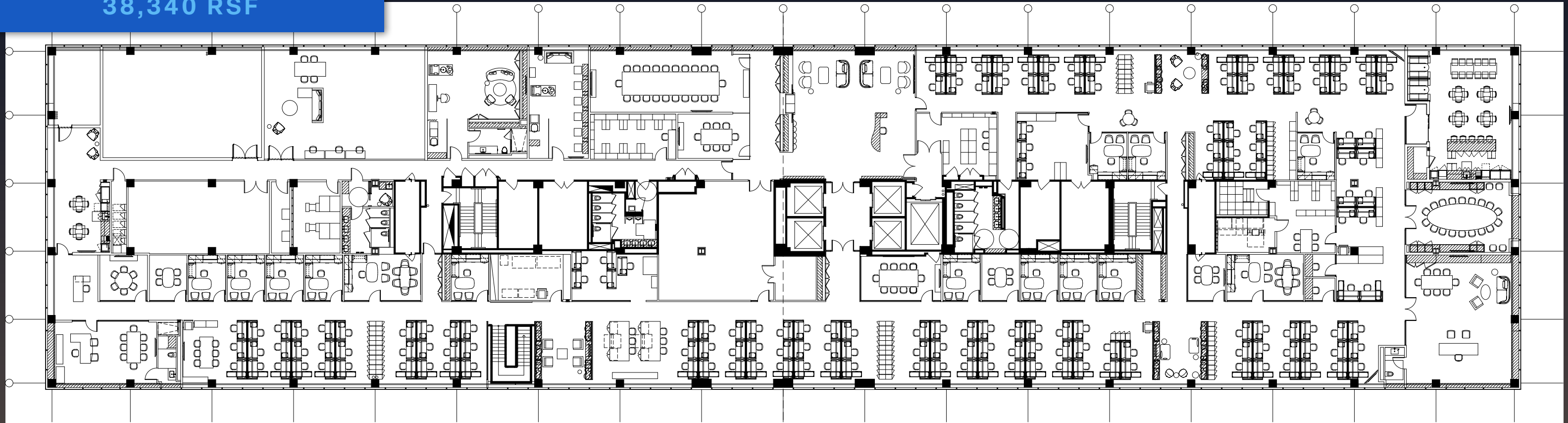




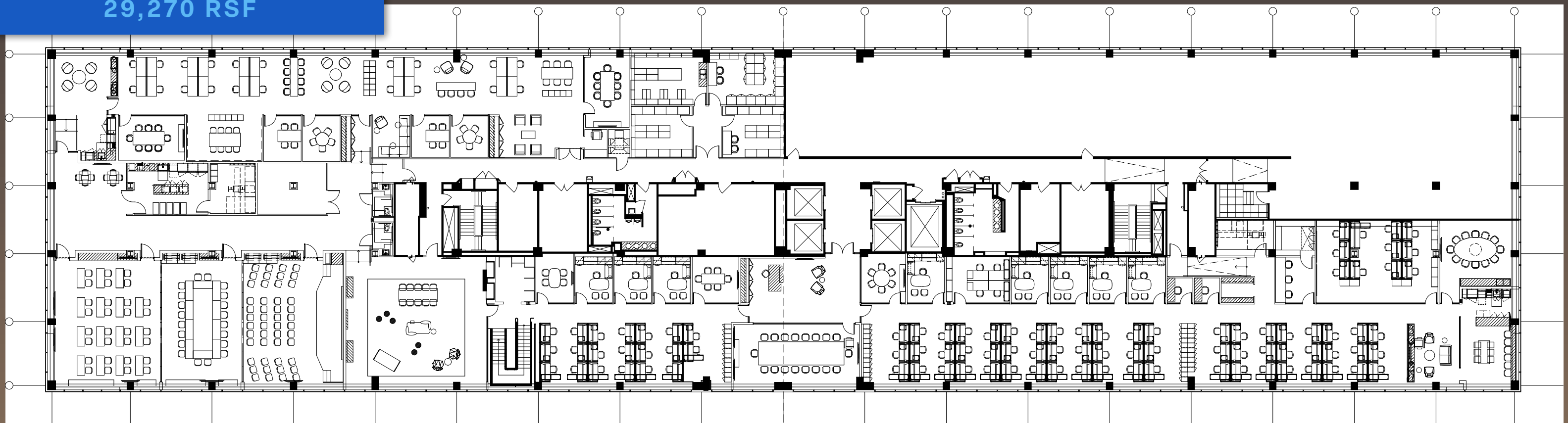
LIGHT FILLED SPACES
AND BREATHTAKING
VIEWS



10TH FLOOR
38,340 RSF








9TH FLOOR
29,270 RSF








ALL LINES LEAD TO NEWPORT

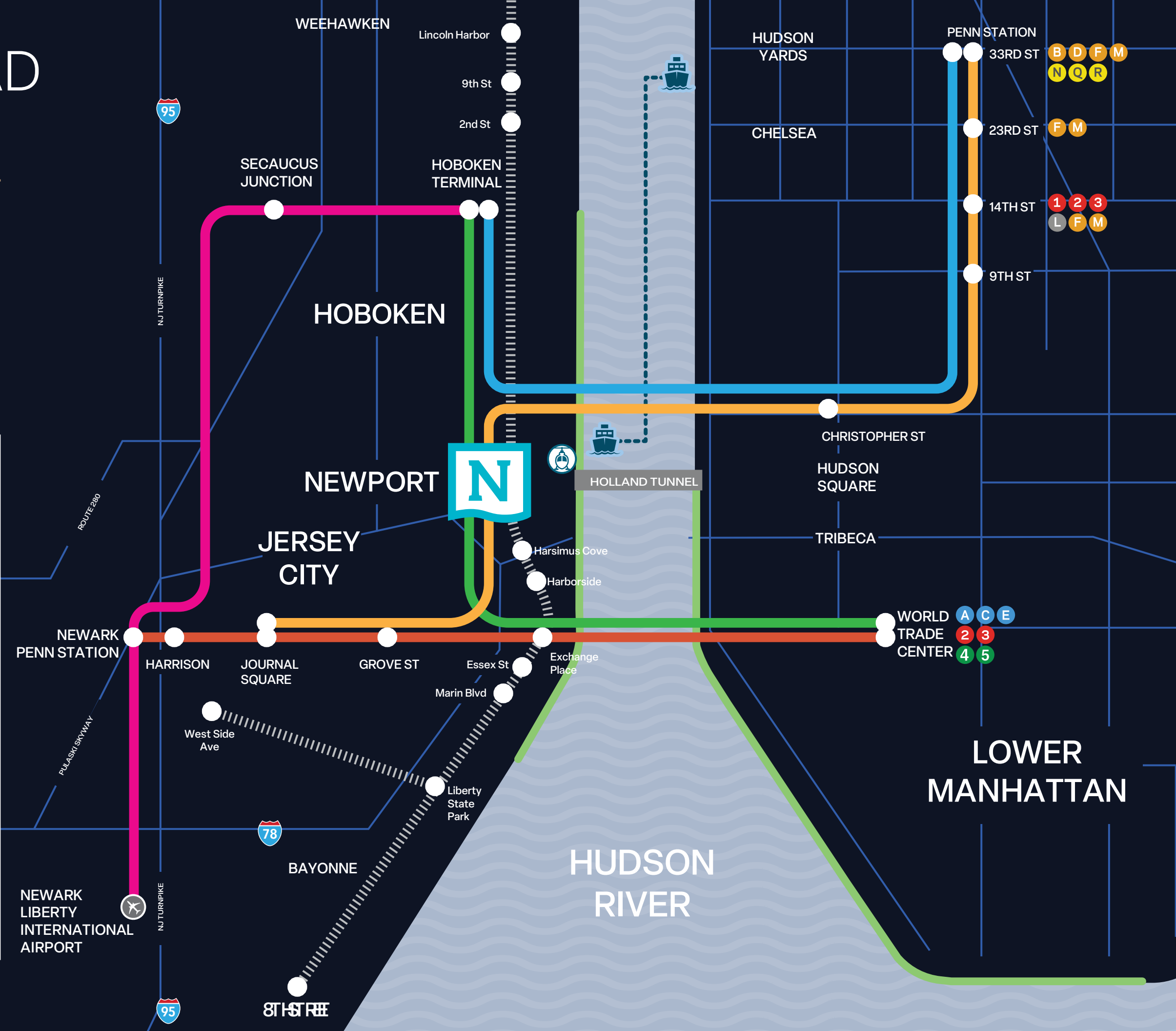
One Stop from Manhattan.
Direct Transit Options to
All Major Commuter Hubs.



-  NEWARK - WORLD TRADE CENTER
-  HOBOKEN - WORLD TRADE CENTER
-  HOBOKEN - 33RD ST
-  JOURNAL SQUARE - 33RD ST



-  NYWATERWAY
-  NEWPORT HELISTOP
-  HUDSON-BERGEN LIGHT RAIL
-  BIKE AND WALKING TRAILS



FOR MORE INFORMATION **CONTACT**

Rémy P. deVarenne
Executive Vice President
+1 201 712 5608
remy.devarenne@cbre.com

Evan Bernard
Vice President
+1 201 712 5646
evan.bernard@cbre.com

Michael Geoghegan
Vice Chairman

Ariel Ball
Senior Vice President

Ali Gordon
Senior Associate

111

Town Square Place

N NEWPORT

CBRE

© 2025 CBRE, Inc. All rights reserved. This information has been obtained from sources believed reliable, but has not been verified for accuracy or completeness. You should conduct a careful, independent investigation of the property and verify all information. Any reliance on this information is solely at your own risk. CBRE and the CBRE logo are service marks of CBRE, Inc. All other marks displayed on this document are the property of their respective owners, and the use of such logos does not imply any affiliation with or endorsement of CBRE.