



# CORPORATE REALTY

201 St. Charles Ave., Suite 3811, New Orleans, LA 70170  
504.581.5005 | [corp-realty.com](http://corp-realty.com)

LAND PARCEL | FOR SALE

## Development Site Along Airline Highway

17227 Airline Highway

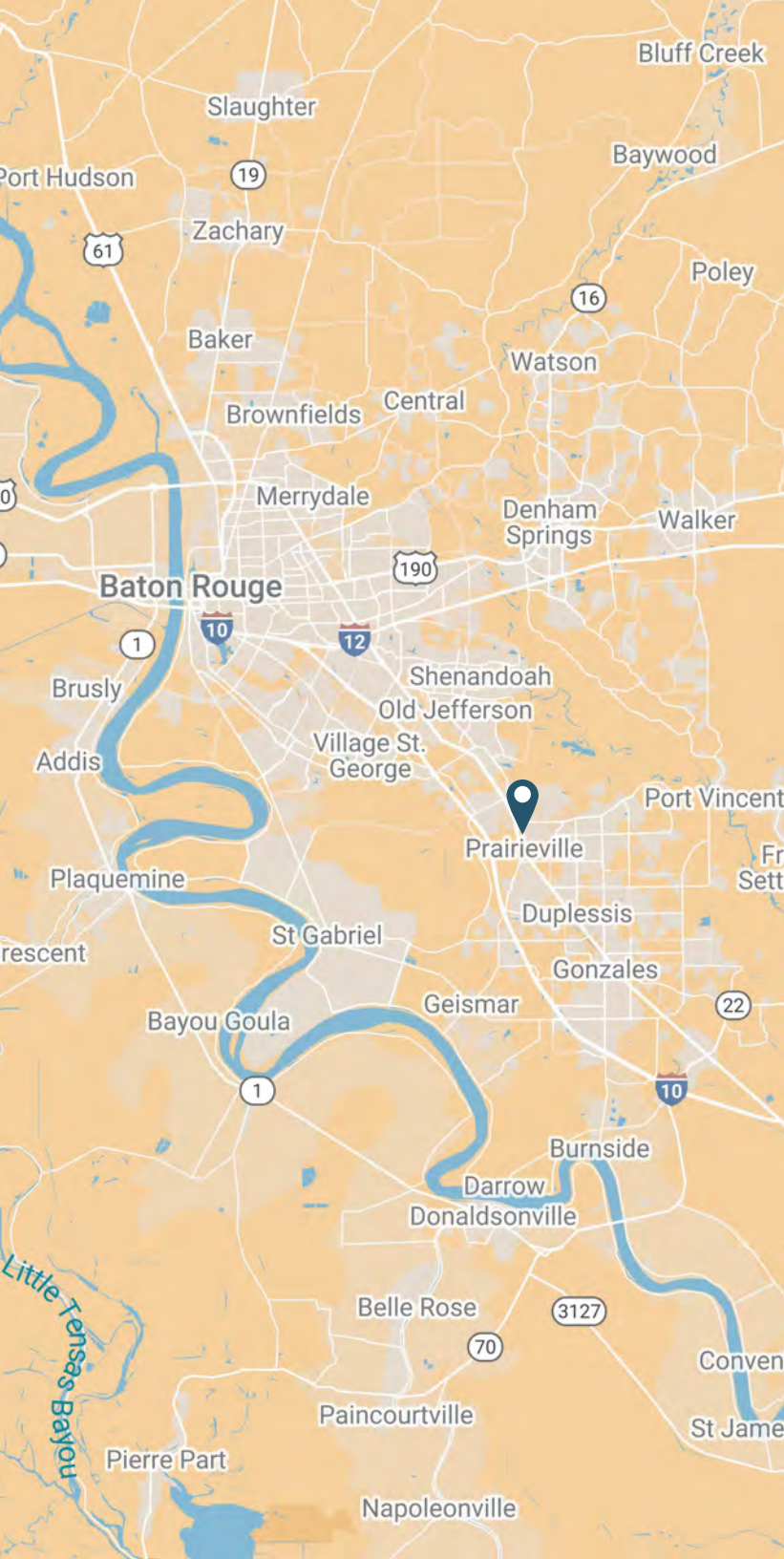
PRAIRIEVILLE, LA 70769

**William Sadler**

[wsadler@corp-realty.com](mailto:wsadler@corp-realty.com)  
504.581.5005

**Jonathan Fawer**

[jfawer@corp-realty.com](mailto:jfawer@corp-realty.com)  
504.581.5005



## PRIME RETAIL SITE IN HIGH TRAFFIC AREA

17227 Airline Highway, Prairieville, LA 70769

### DESCRIPTION

This approximately 25,000-sf land parcel is along a well-traveled and highly visible section of Airline Highway (47,955 vpd) in Prairieville. It has exceptional access, with a dedicated right turn in and right turn out from Airline, full rear access off Swamp Road at a lighted intersection, and cross access in place with neighboring parcels.

Prairieville is well positioned just south of Baton Rouge in Ascension Parish, one of Louisiana's fastest growing parishes. The community consists of a flourishing population of more than 80,000 people within a 5-mile radius, many migrating from Baton Rouge in favor of the high-performing public schools, low crime rate, and affordable housing. Airline Highway is one of the major thoroughfares, featuring retail centers with well-known national retailers such as Walmart Supercenter, ALDI, CVS, O'Reilly Auto Parts, and T-Mobile; quick-serve restaurants like Raising Cane's, McDonald's, Papa Johns, and Popeyes; and local retailers.

Zoned MU, this would be ideal for development for retail, QSR, or service-based uses.

### OVERVIEW

SIZE	SALE PRICE	ZONING
24,588 sf (0.564 acres)	\$775,000	Mixed Use

**William Sadler**  
wsadler@corp-realty.com  
504.581.5005

**Jonathan Fawer**  
jfawer@corp-realty.com  
504.581.5005





17227 AIRLINE HWY



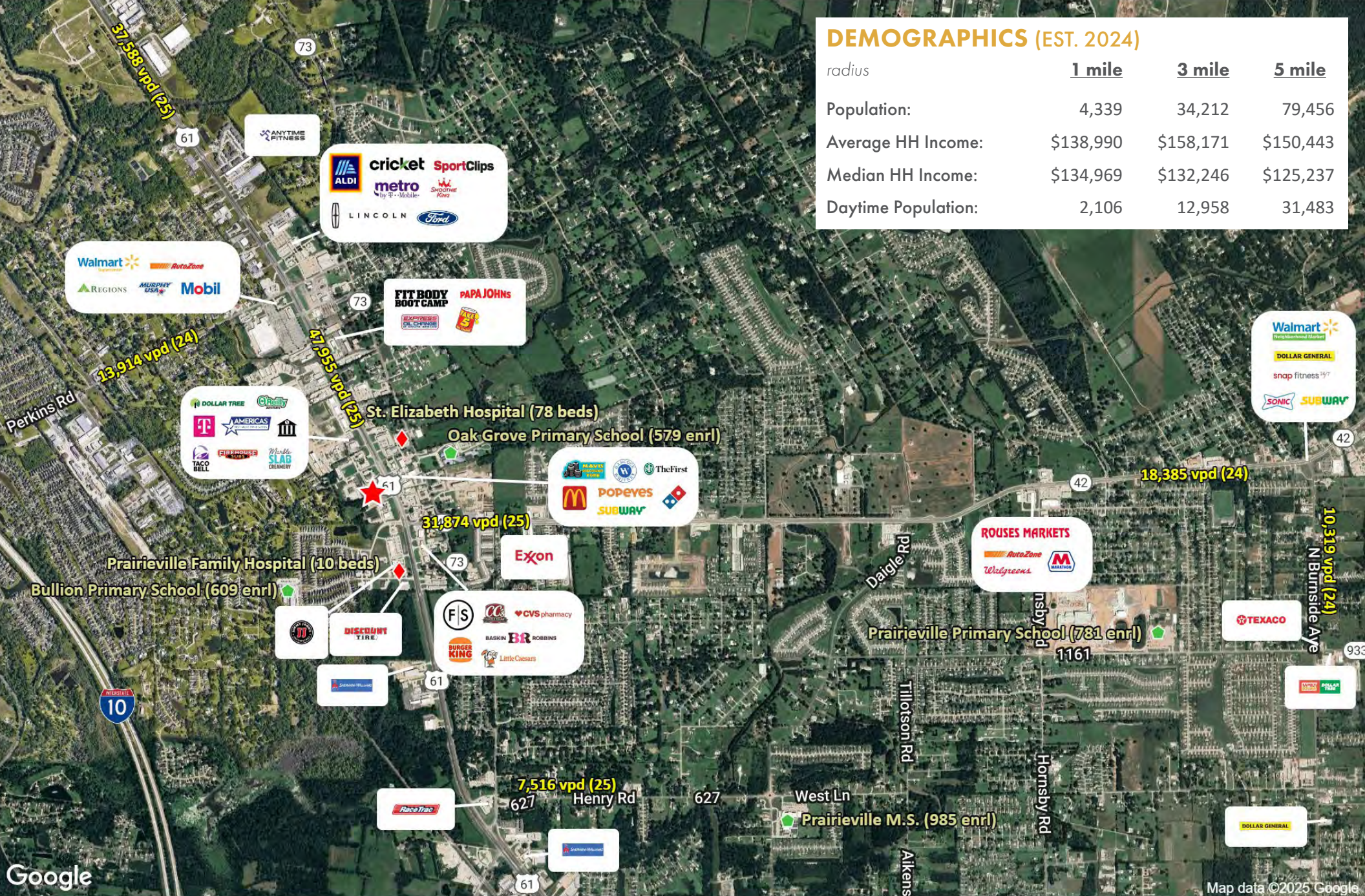
**CORPORATE REALTY**

A MEMBER OF  
**CHAINLINKS**  
RETAIL ADVISORS

**William Sadler**  
wsadler@corp-realty.com  
504.581.5005

**Jonathan Fawer**  
jfawer@corp-realty.com  
504.581.5005





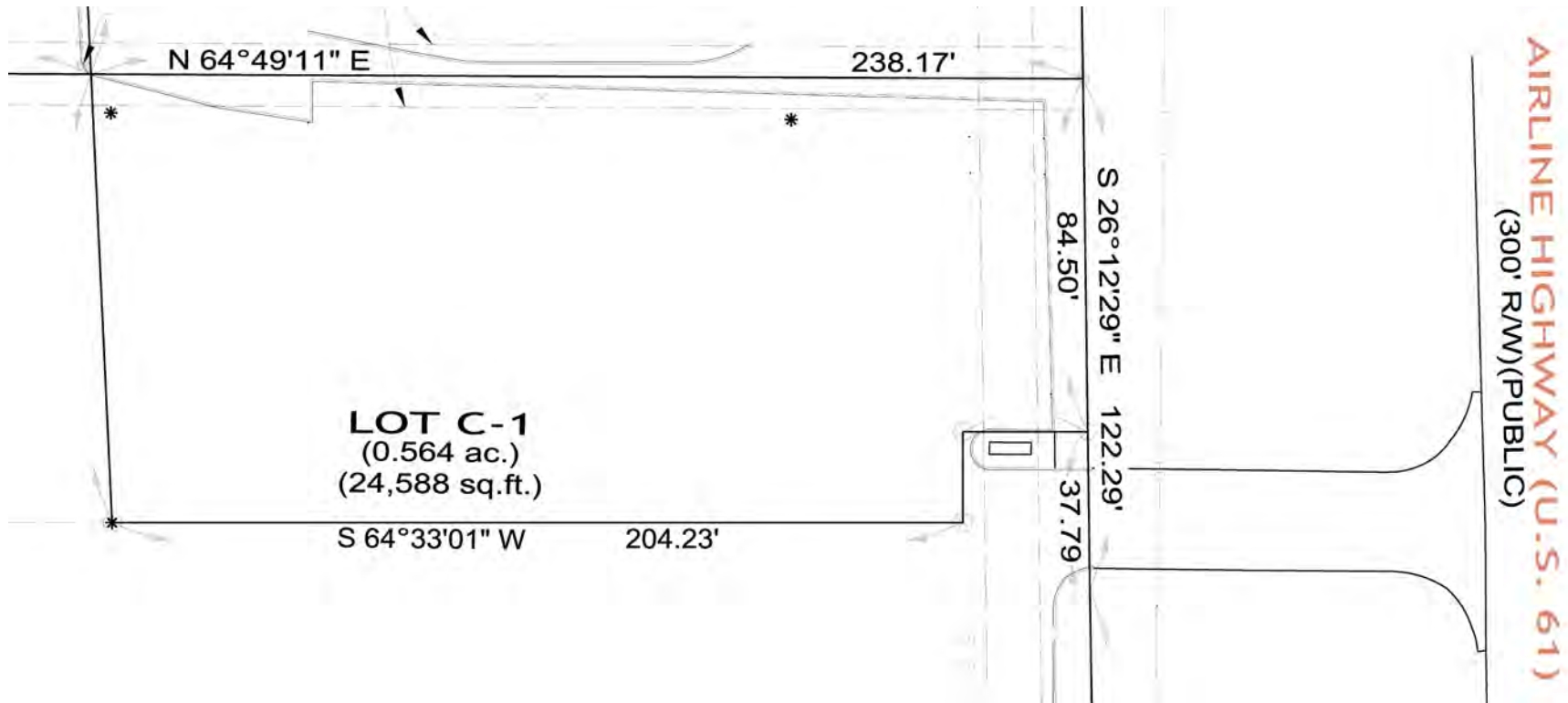
**DEMOGRAPHICS (EST. 2024)**

radius	1 mile	3 mile	5 mile
Population:	4,339	34,212	79,456
Average HH Income:	\$138,990	\$158,171	\$150,443
Median HH Income:	\$134,969	\$132,246	\$125,237
Daytime Population:	2,106	12,958	31,483



# 17227 AIRLINE HWY

## SITE PLAN



**CORPORATE REALTY**

A MEMBER OF  
**CHAINLINKS**  
RETAIL ADVISORS

**William Sadler**

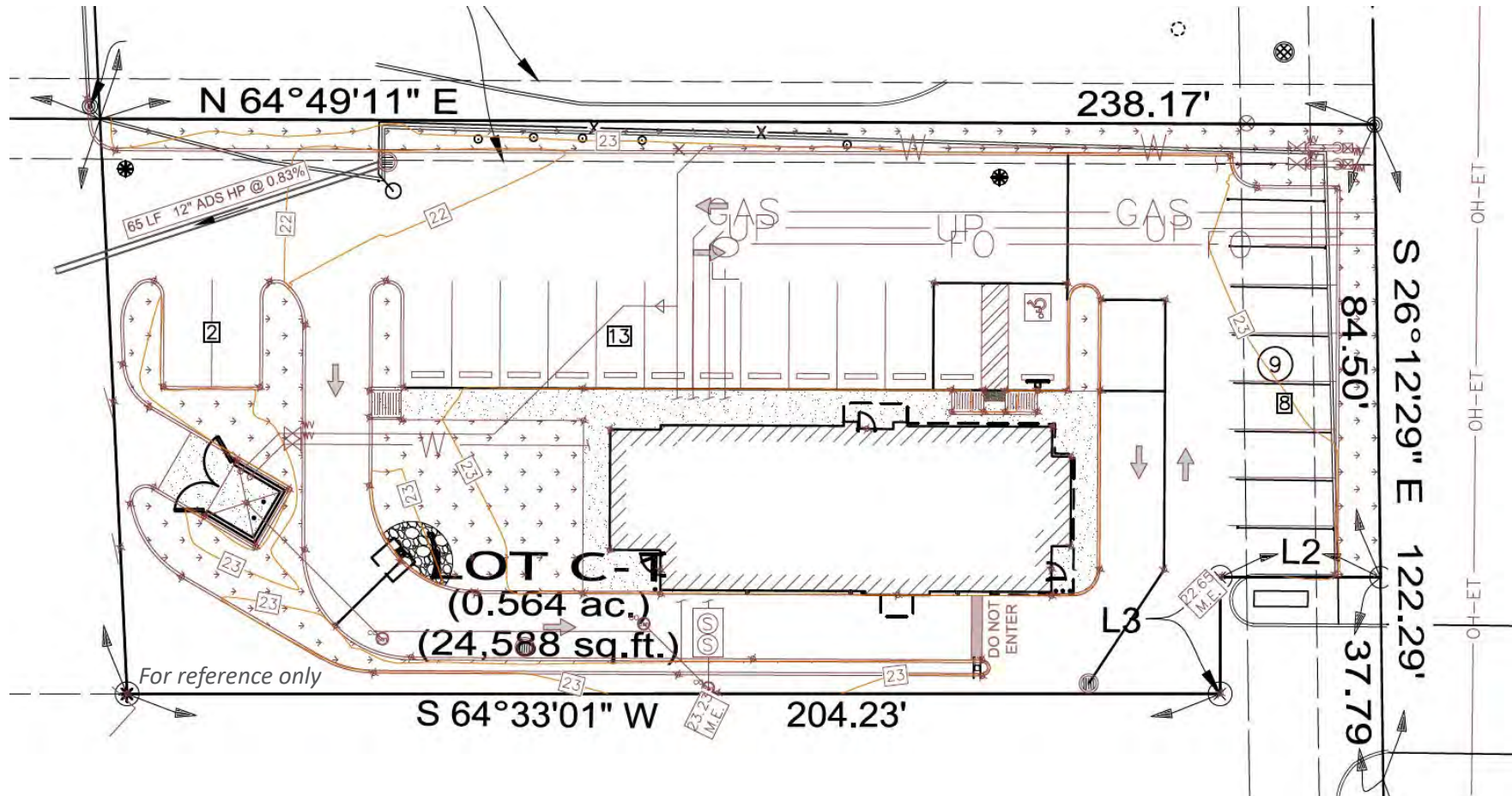
wsadler@corp-realty.com  
504.581.5005

**Jonathan Fawer**

jfawer@corp-realty.com  
504.581.5005

# 17227 AIRLINE HWY

## DEVELOPMENT EXAMPLE



This plan shows how the site could be developed for a quick serve restaurant.



**CORPORATE REALTY**

A MEMBER OF  
**CHAINLINKS**  
RETAIL ADVISORS

**William Sadler**

wsadler@corp-realty.com  
504.581.5005

**Jonathan Fawer**

jfawer@corp-realty.com  
504.581.5005



LAND PARCEL | FOR SALE

# Development Site Along Airline Highway

17227 Airline Highway, Prairieville, LA 70769



**William Sadler**  
wsadler@corp-realty.com  
504.581.5005



**Jonathan Fawer**  
jfawer@corp-realty.com  
504.581.5005



## CORPORATE REALTY

201 St. Charles Ave., Suite 3811, New Orleans, LA 70170  
504.581.5005 | [corp-realty.com](http://corp-realty.com)

The information contained herein has been obtained from sources that we deem reliable. No representation or warranty is made as to the accuracy thereof, and it is submitted subject to errors, omissions, change of price, or other conditions, or withdrawal without notice. Licensed in Louisiana, 4/2025