

FORMER HANDS ON! MUSEUM

317 East Main Street
Johnson City, TN 37601

Location

On East Main Street between South Roan Street and Colonial Way in Downtown Johnson City

Available for Lease

1,787 SF - \$15/SF/year NNN

Highlights

Landlord to provide vanilla box

Part of The Henry, a renovation/revitalization project

Sprinklered; 17' ceiling height

Basement not included, but can be made available

Just off I-26, exit 23

Approx. 1.5 miles from East Tennessee State University

Walking distance to downtown restaurants and shops

Traffic Counts

E Main St: 7,047 (2022)

E Market St: 6,392 (2022)

Demographics

(2025 Est.)	3 mile	5 mile	10 mile
Population	53,302	82,496	162,859
Median HH Income	\$49,646	\$53,610	\$60,632
Median Age	35.1	37.8	41.6

Contact

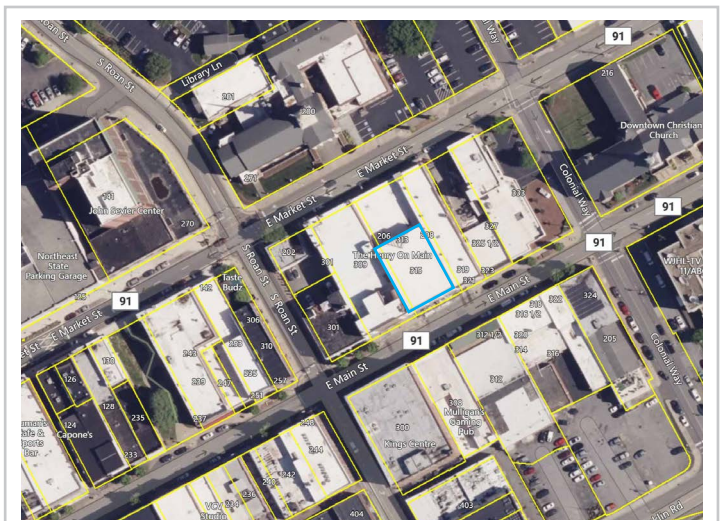
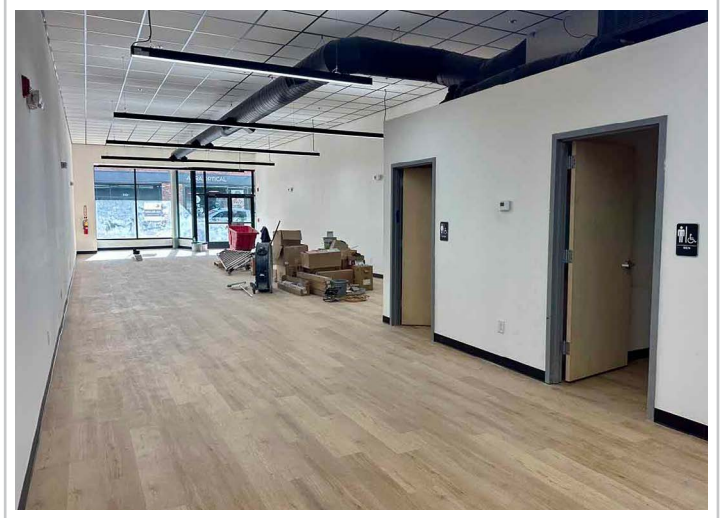
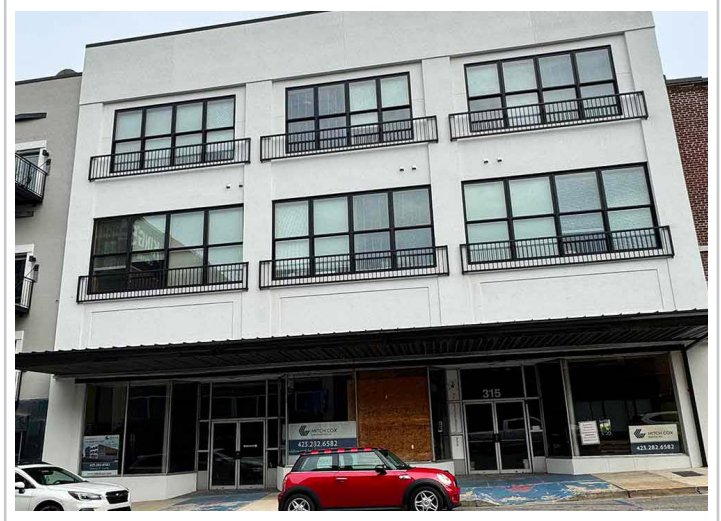
Shannon K. Castillo

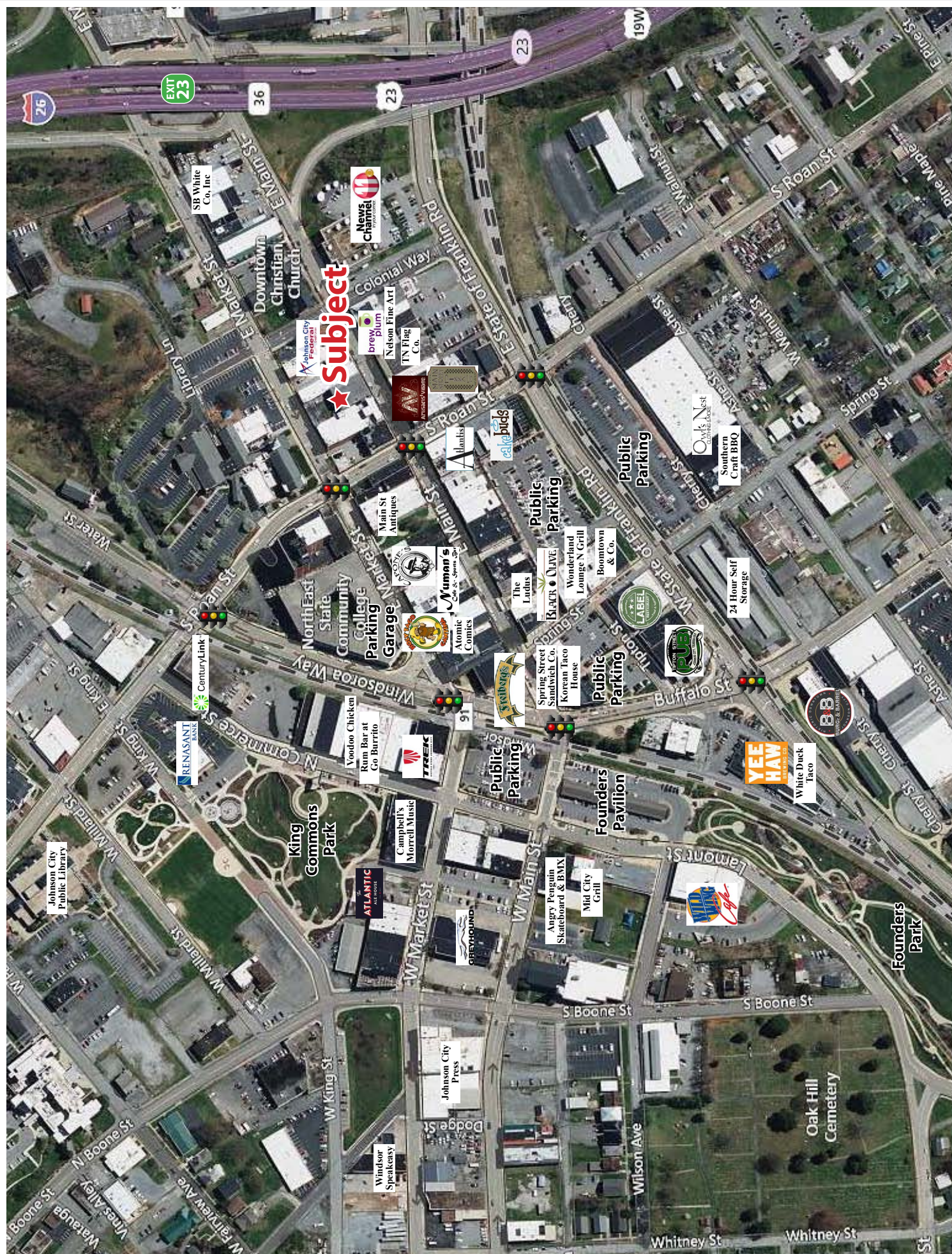
Affiliate Broker

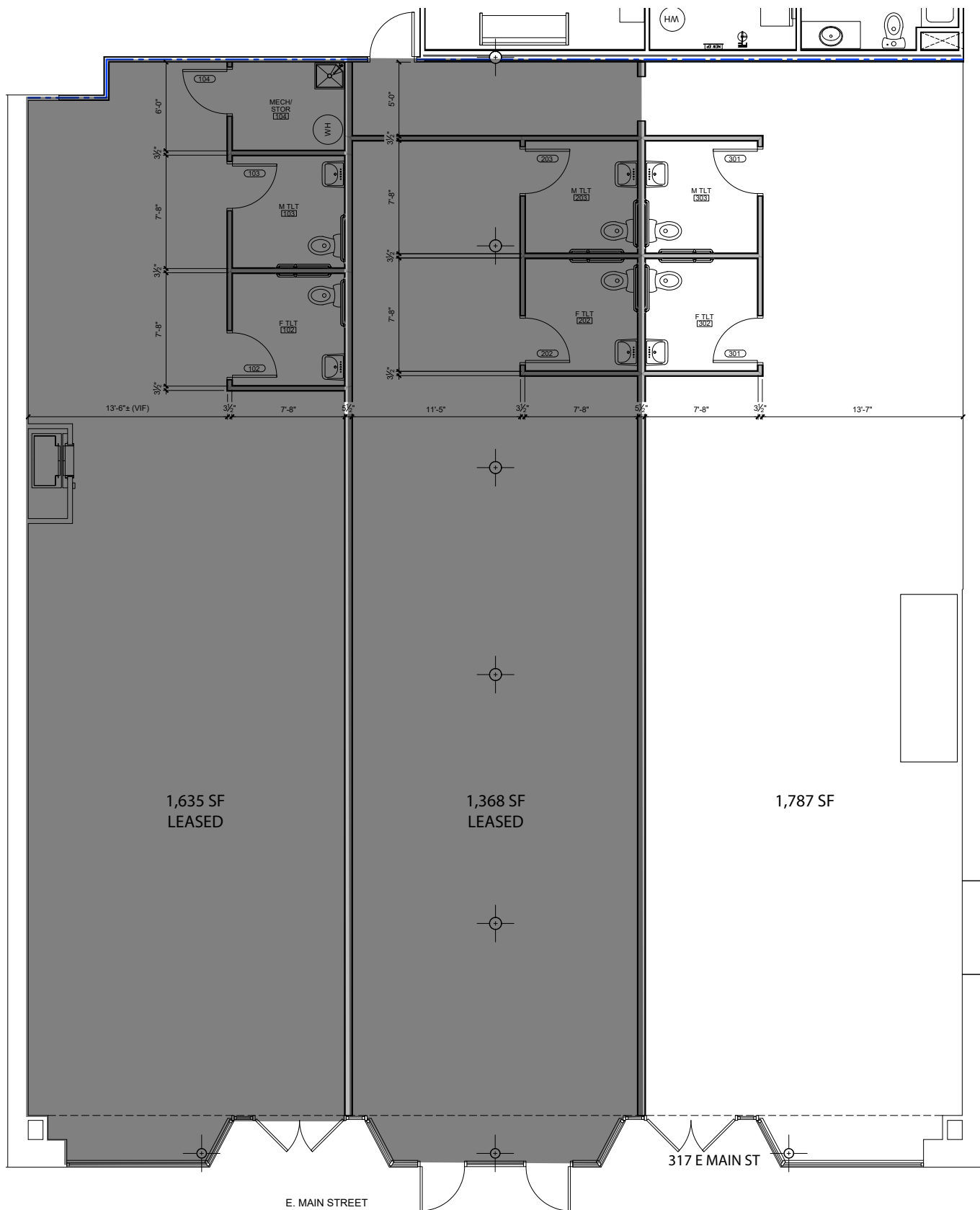
shannon@mitchcox.com

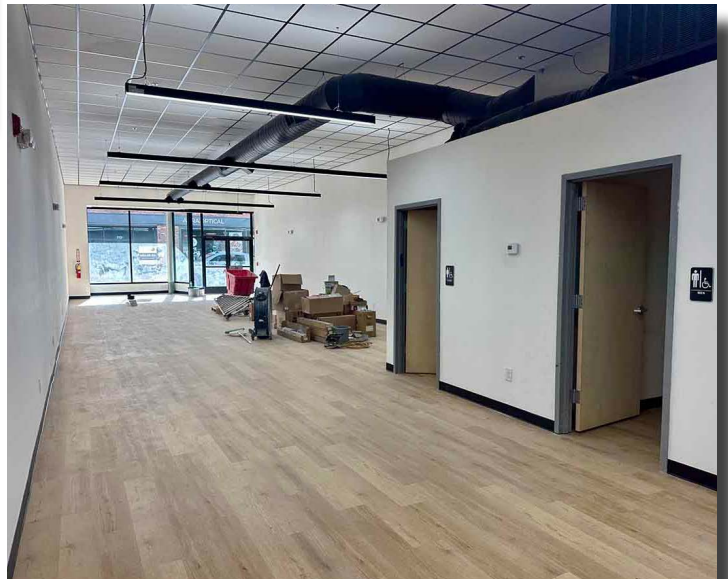
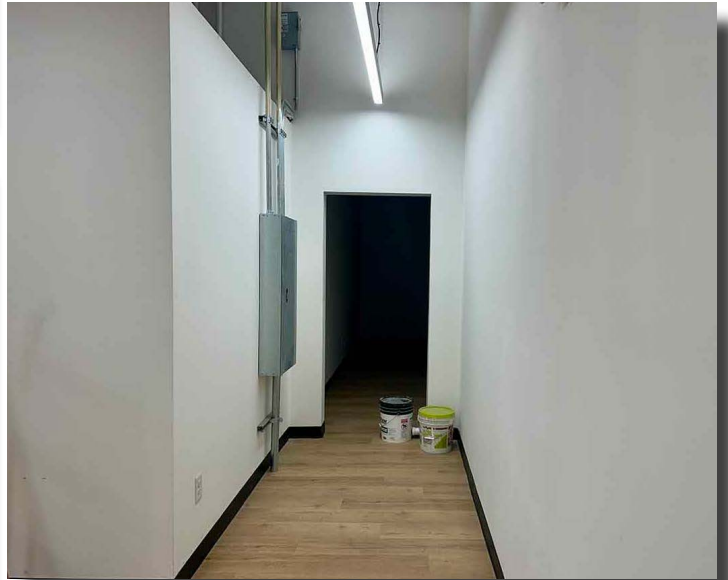
📞 423-282-6582 | 📠 423-282-5903

www.mitchcox.com









MITCH COX
REALTOR, INC.

2304 Silverdale Drive, Suite 200, Johnson City, TN 37601
423-282-6582 (o) 423-282-5903 (f) www.mitchcox.com