

*Site lines are approximate



For Lease

Industrial Office/ Warehouse Space

Abigail K. Bachman

Vice President
+1 603 206 9644
abby.bachman@colliers.com



210 Commerce Way, Suite 350
Portsmouth, NH 03801
+1 603 433 7100
colliersnh.com

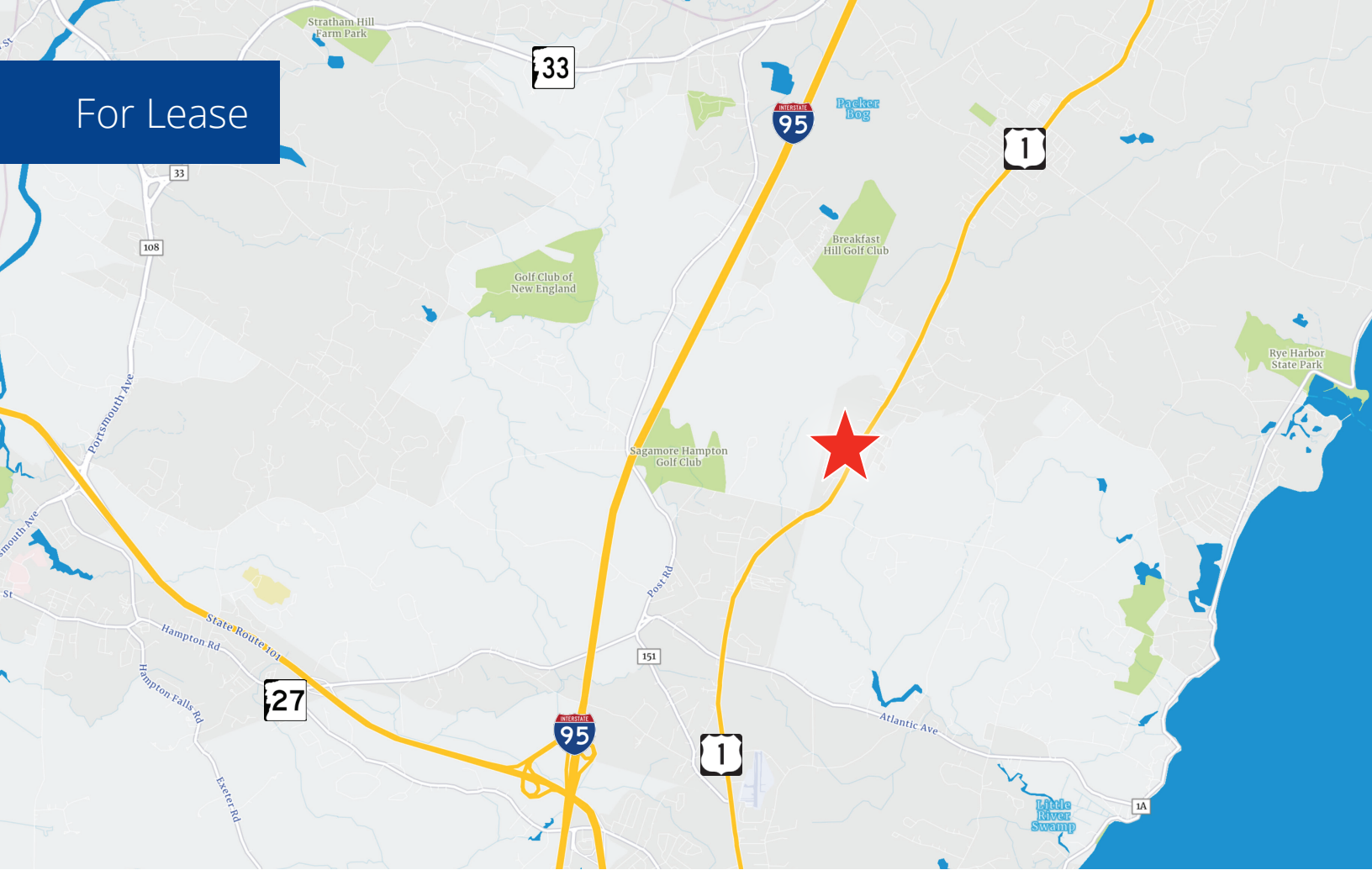
180 Lafayette Road North Hampton, NH

Property Highlights

- 1,654± SF multi-level warehouse/office space available for lease in an industrial park off Route 1/Lafayette Road, North Hampton, NH
- Unit 4-3 consists of warehouse space, first and second floor office space, and one 1/2 bath
- The park includes 3 industrial buildings, self-storage units, Irving, Rusty Lantern Market, and Keegan Auto
- Available on May 1, 2026

Information herein has been obtained from sources deemed reliable, however its accuracy cannot be guaranteed by Colliers International | New Hampshire & Maine. The user is required to conduct their own due diligence and verification. Colliers International | New Hampshire & Maine is independently owned and operated.

For Lease



Specifications

| | |
|-----------------|---|
| Address: | 180 Lafayette Road |
| Location: | North Hampton, NH 03862 |
| Building Type: | Industrial |
| Year Built: | 2001 |
| Available SF: | Unit 4-3: 1,654± |
| Acreage: | 11.61± |
| Utilities: | Municipal water & private septic Propane gas |
| Zoning: | IB/R |
| Clear Height: | 18'± |
| Ceiling Height: | 20'± |
| Drive-in Door: | 1 |
| Parking: | 3 unassigned spaces |
| Power: | 200A; 120/240V; single phase |
| Lease Rate: | \$2,250/month + utilities |
| Available: | May 1, 2026 |

Contact us:

Abigail K. Bachman

Vice President
+1 603 206 9644
abby.bachman@colliers.com



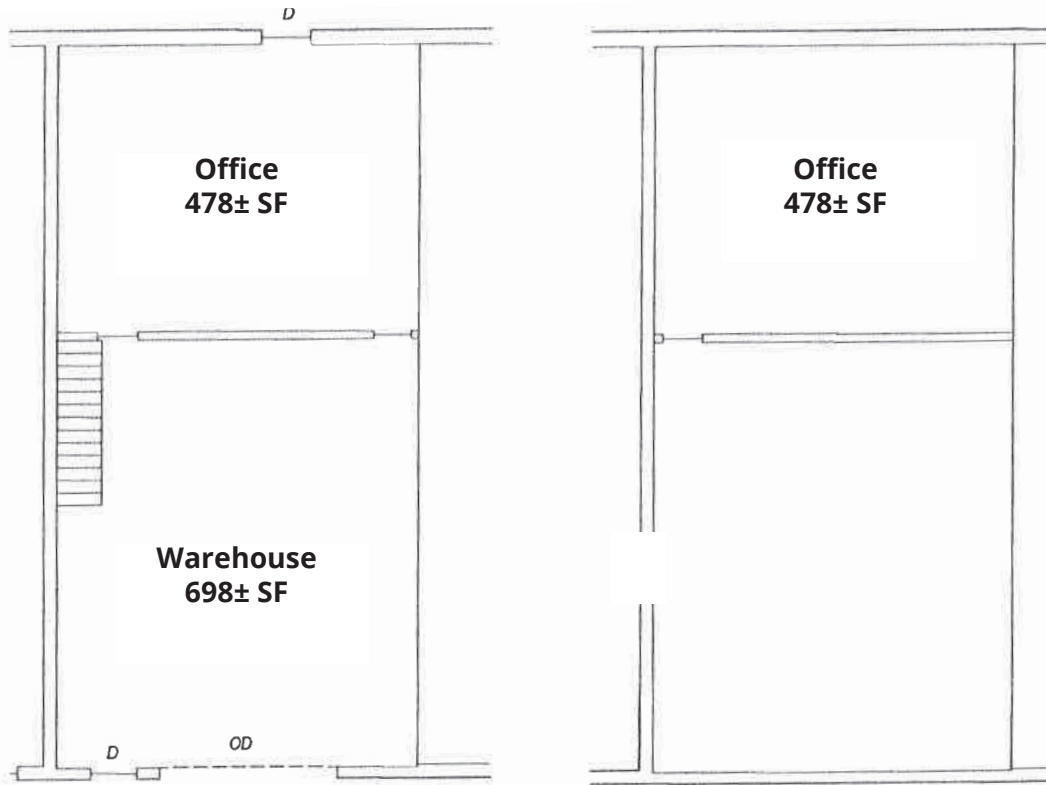
210 Commerce Way, Suite 350, Portsmouth, NH 03801
+1 603 433 7100 | colliersnh.com

Property Information

| Property Data | |
|------------------------------|--------------------|
| Acreage | 11.61± |
| Number of Buildings | 6 |
| Floors per Building | 2 |
| Number of Units | Varies |
| Available Unit Data | |
| Total Available SF | 1,654± |
| Total Available SF Breakdown | |
| Office | 956± |
| Warehouse | 698± |
| Total Available SF per Floor | |
| First | 1,176± |
| Second | 478± |
| Loading Dock | None |
| Drive-in Door | 1 (12' x 14') |
| Restrooms | 1 |
| Construction Data | |
| Year Built | 2001 |
| Exterior | Metal siding |
| Roof (type & age) | Metal (2001) |
| Foundation | Concrete |
| Concrete Slab Thickness | 6"± to 8"± (est.) |
| Insulation | Yes |
| Exterior Doors | Metal |
| Interior Walls | Sheetrock (office) |
| Lighting (warehouse) | Metal halide |
| Column Spacing | None |
| Ceiling Height | 20'± |
| Clear Height | 18'± (average) |
| Floors | Concrete/carpet |
| Windows | Metal |
| Handicapped Access | Yes |
| Land Data | |
| Survey | Yes |
| Site Plan | Yes |
| Subdivided | Yes |
| Easement(s) | Yes |
| Restrictive Covenants | None |
| Wooded | No |
| Topography | Flat |
| Wetlands | No |

| Site Data | |
|--------------------------|--------------------------------|
| Zoning | IB/R |
| Traffic Count (2020) | 15,268± |
| Visibility | Poor |
| Road Frontage | 430'± |
| Neighborhood | Commercial |
| Landscaping | Complete |
| Curb Cuts | 3 |
| Sidewalks | None |
| Parking | 3 spaces |
| Site Status | Complete |
| Services Data | |
| Warehouse Heat | Propane gas |
| Office HVAC | Propane gas/electric baseboard |
| Office AC | Window unit |
| Power | |
| Phase | Single |
| Amps | 200 (currently 100 amps) |
| Volts | 120/240 |
| # of Services | 1 per unit |
| Back-up Generator | None |
| Internet Connection Type | Cable |
| Internet Provider | Comcast |
| Hot Water | Electric |
| Water | Municipal |
| Sewer | Septic |
| Gas (type) | Propane |
| Sprinkler (type) | None |
| Security System | None |
| Elevator | None |
| Tax Data | |
| 2025 Tax Amount | \$93,203.12 |
| Tax Map & Lot Number | 017/086 |
| 2025 Tax Rate per 1,000 | \$13.45 |
| 2025 Assessment | |
| Land | \$3,411,200 |
| Building/Yard Items | \$3,518,400 |
| Total Assessed Value | \$6,929,600 |
| 2024 EQ Ratio | 82.4% |
| Other Data | |
| Deed Reference(s) | 5940/2377 |
| Easement Reference(s) | Hampton Water Works |

Unit 4-3 Floor Plan



GROUND FLOOR

SECOND FLOOR



- NOTES:**
1. OFFICE, WAREHOUSE AND SHOP AREAS SHOWN HEREON ARE FROM FACE OF WALL TO FACE OF WALL & DO NOT INCLUDE THE INTERNAL PARTION WALLS.
 2. UNIT AREAS SHOWN HEREON ARE FROM FACE OF WALL TO FACE OF WALL & INCLUDE THE INTERNAL PARTION WALLS.
 3. UNIT DIVISION LINES SHOWN ARE ASSUMED BASED ON CENTERLINE OF EXISTINTING EXPOSED STEEL TRUSSES
 4. NOT ALL INTERIOR STAIRS & DOORS SHOWN HEREON.

LEGEND:

- D DOOR
- PASS THROUGH (NO DOOR)
- OD OVERHEAD DOOR
- EOP..... EDGE OF PAVEMENT
- RWS..... STONE RETAINING WALL

| | | |
|---|---|---|
| PLAN NO: 22060-5 DATE: 6-10-2016 JOB NO: 22060-5 SCALE: 1"= 8' | SPACE UTILIZATION FLOOR PLAN BUILDING #4 180 LAFAYETTE RD, NORTH HAMPTON, NH for MARGARET PUCCI | ©JAMES VERRA and ASSOCIATES, INC. 101 SHATTUCK WAY, SUITE B, NEWINGTON, NH 03801 (603) 436-3557 DWGBY: GTD CHKBY: JV |
|---|---|---|

*Not to scale