

For Lease

116 Landmark Square
Virginia Beach, VA

±750 SF Available

- First floor space with great natural light and quality finishes
- Very efficient layout – Three offices, open work area, kitchenette, and storage area
- Central Lynnhaven location with easy access to I-264 and other submarket amenities
- \$18.00/RSF, Net of Janitorial



Accelerating success.

150 W Main Street
Norfolk, VA 23510
P: +1 757 490 3300
colliers.com/norfolk

Ricky Anderson

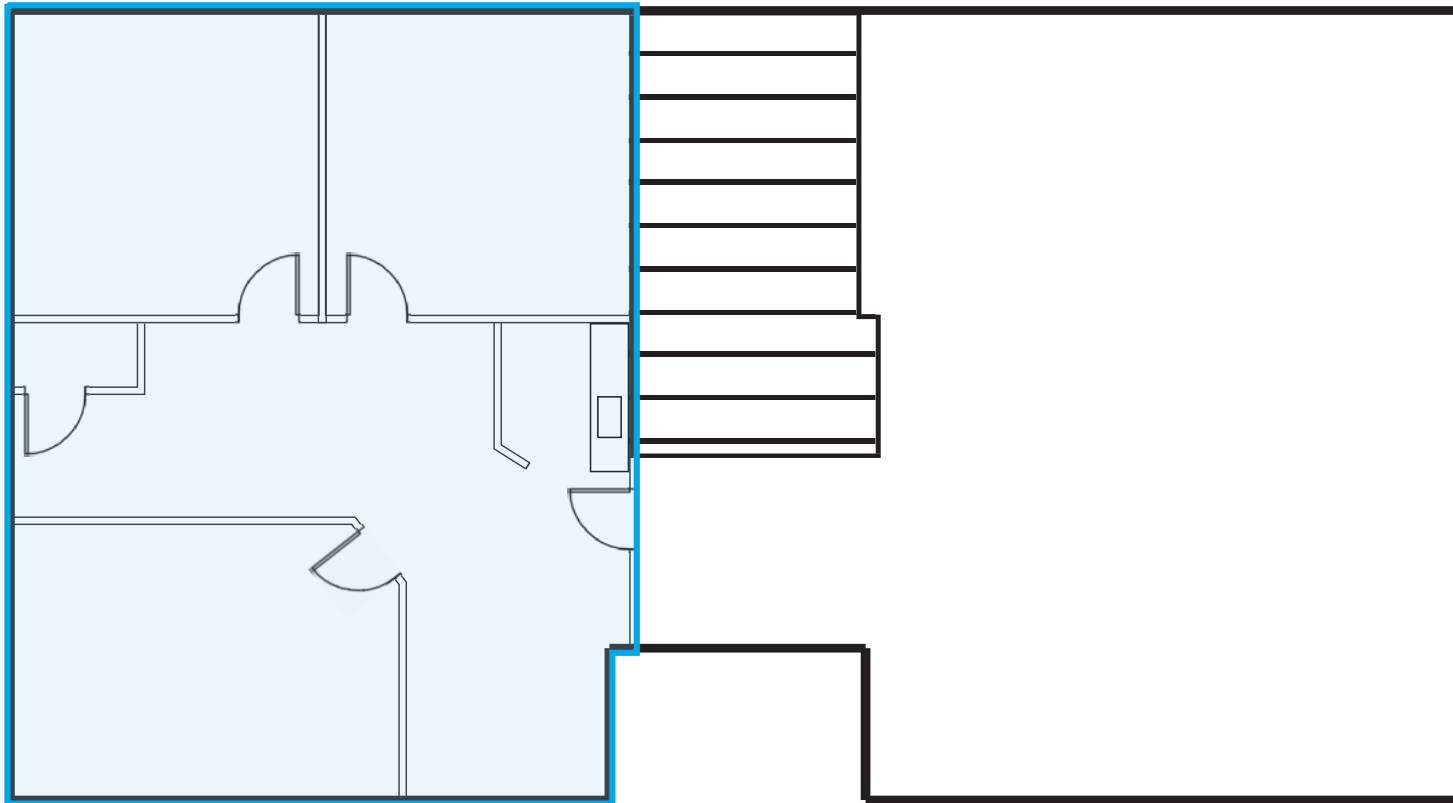
Executive Vice President
+1 757 217 1892
ricky.anderson@colliers.com

Drew Ott

Associate
+1 757 228 1826
drew.ott@colliers.com

First Floor Plan

±750 SF available





150 W Main Street
Norfolk, VA 23510
P: +1 757 490 3300
colliers.com/norfolk

Ricky Anderson

Executive Vice President
+1 757 217 1892
ricky.anderson@colliers.com

Drew Ott

Associate
+1 757 228 1826
drew.ott@colliers.com



This document has been prepared by Colliers International for advertising and general information only. Colliers International makes no guarantees, representations or warranties of any kind, expressed or implied, regarding the information including, but not limited to, warranties of content, accuracy and reliability. Any interested party should undertake their own inquiries as to the accuracy of the information. Colliers International excludes unequivocally all inferred or implied terms, conditions and warranties arising out of this document and excludes all liability for loss and damages arising there from. This publication is the copyrighted property of Colliers International and/or its licensor(s). ©2024. All rights reserved.