



Dave Hilbert

Designated Broker



425-280-6542



Dave@Re2000Homes.com



www.RealEstate2000Corp.com





\$849,990

9707 Key Peninsula Hwy NW, Gig Harbor, WA 98329

AUTO REPAIR BUILDING - REAL ESTATE ONLY

Rare Opportunity To Own A 6 Bay Auto Repair Building! 2.47-Acres. 250ft Of Frontage! Fenced Area For 50 Cars, Dual Drive-Through Entries, Wired Security, & More! The Lease For The Business To Be Negotiated With Seller, Currently Offered At \$5,000 Per Month, Triple Net, A 7% CAP! The Fully Stocked Auto Repair Business Is Being Sold Separately For \$849,990, A 33.5% CAP Rate! (Listing # 2217930) 17 Years Of Thriving Business! The Real Estate And Business Can Be Purchased Together For \$1,699,980 (20.3% CAP!)

Ask About SBA Loan!

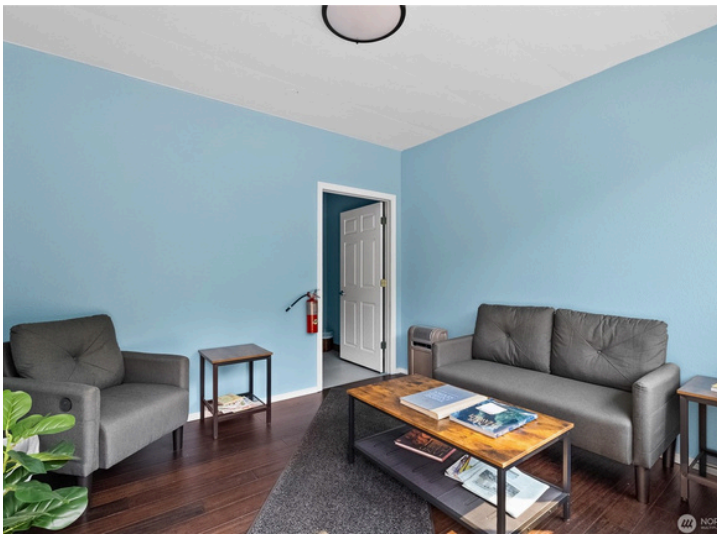
This Sale Is Subject To Sale of Business On Property.

SHOWING BY APPOINTMENT ONLY; 3 PM OR LATER. NO DRIVE BY OR SHOWINGS DURING BUSINESS HOURS. Listing Agent Must Be Present.



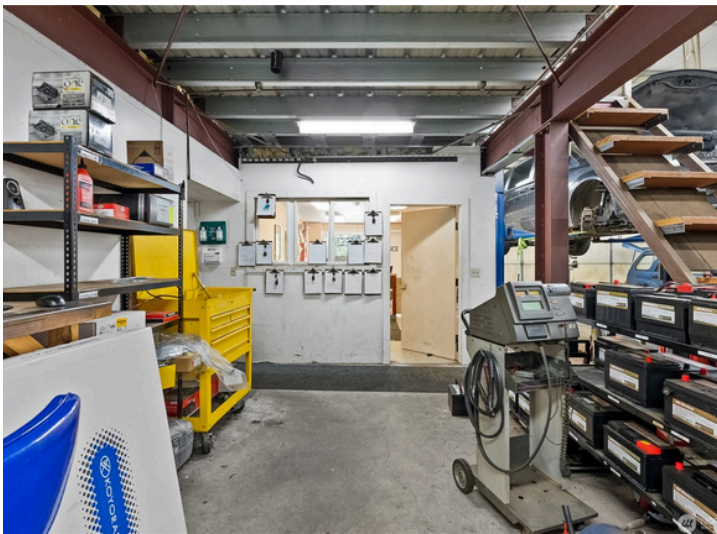
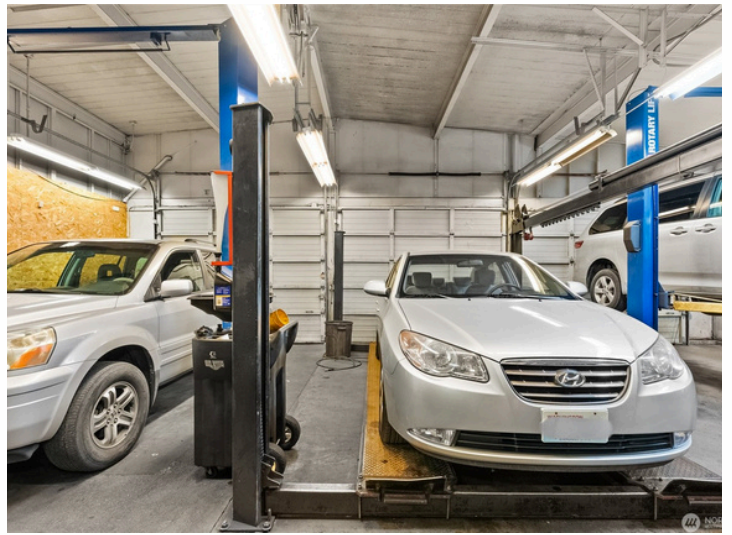
Contact:
Dave Hilbert
 Designated Broker
 425-280-6542





Contact:
Dave Hilbert
Designated Broker
425-280-6542





Contact:
Dave Hilbert
Designated Broker
425-280-6542



Call Today To Discuss Getting A SBA Loan!

----- Original Message -----

Subject: SBA Financing

Date: Wed, 3 Apr 2024 19:09:12 -0700

From: Robb Hawkins <robb@cruxcre.com>

To: Dave - Hilbert Real Estate 2000 Corp <dave@re2000homes.com>

Hello Dave, I have been a top producing SBA lender for 20+ years. Assuming a well qualified buyer is interested in obtaining SBA financing for real estate, 10% down payment is an option. Rates range from 7.5-9.75%. A business acquisition requires 25% down payment and business being purchased must be able to service the debt. Let me know if I can assist your clients and will happily reach out to obtain loan package requirements.

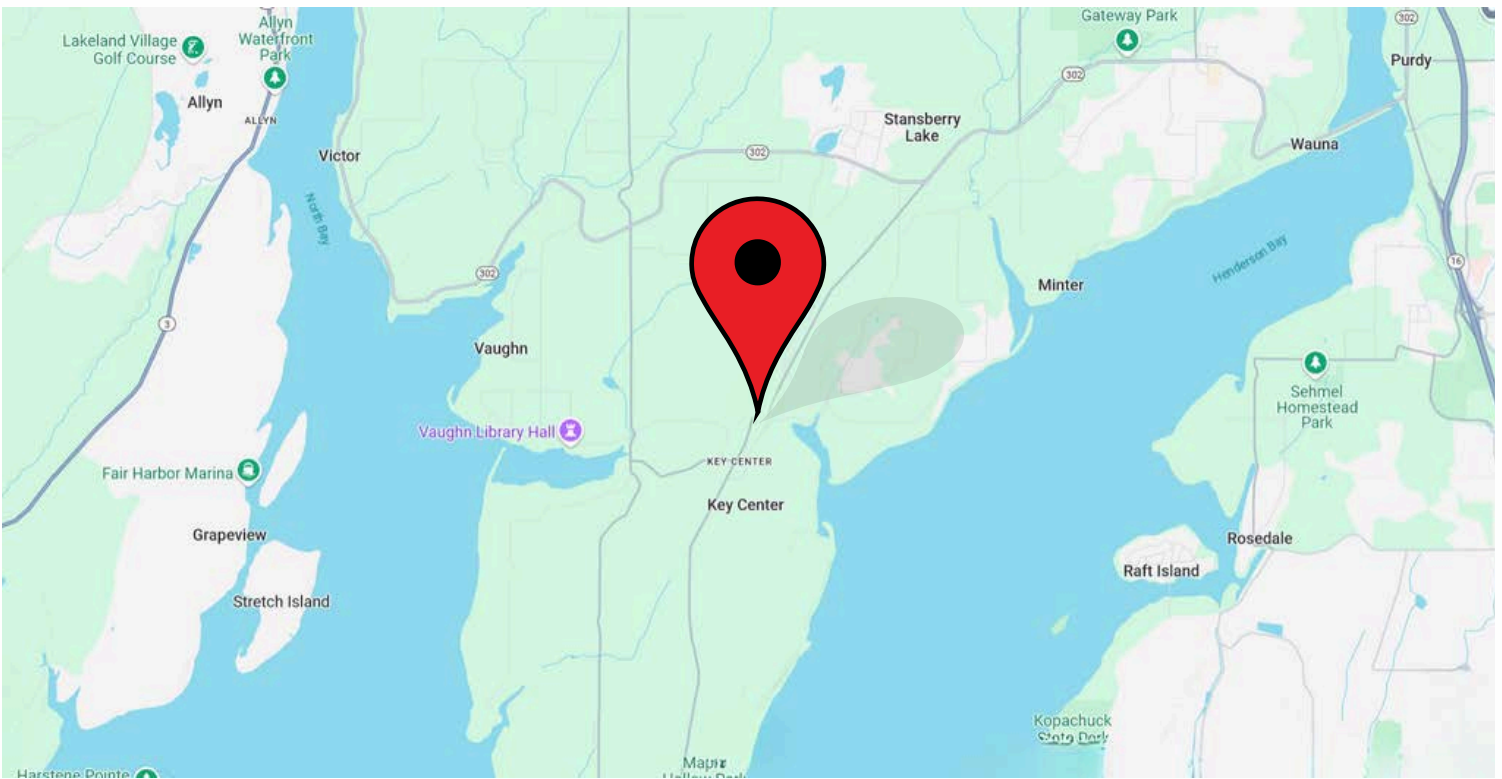
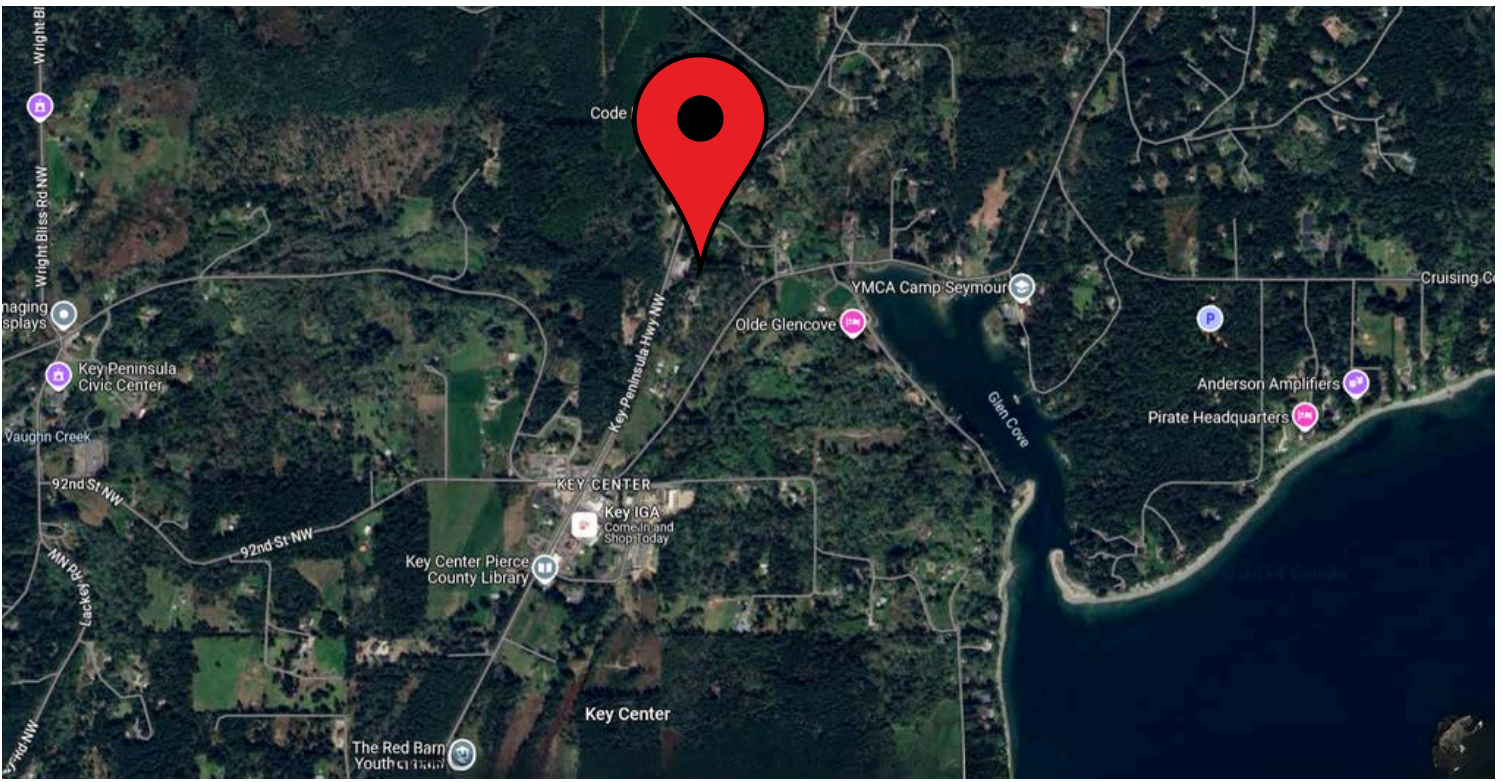
Robb Hawkins
Principal
Crux Commercial Partners
732 Broadway, Suite 301
Tacoma, WA 98402
C: 253.219.3005
Robb@cruxcre.com

Dave - 425-280-6542



Contact:
Dave Hilbert
Designated Broker
425-280-6542





[Click Here To View On Google Maps!](#)



Contact:
Dave Hilbert
Designated Broker
425-280-6542





Gig Harbor, Washington

[Click Here To See More](#)

Gig Harbor (Lushootseed: *txʷaalqəʔ*) is the name of both a bay on Puget Sound and a city on its shore in Pierce County, Washington. The population was 12,029 at the 2020 census.^[2]

Gig Harbor bills itself as "the Maritime City" and maintains a strong connection to its maritime heritage. Due to its close access to several state and city parks, and historic waterfront that includes boutiques and fine dining, it has become a popular tourist destination. Gig Harbor is located along State Route 16, about 6 mi (10 km) from its origin at Interstate 5, over the Tacoma Narrows Bridge.^[4]

History

The S'Homamish or Homamish (Lushootseed: *sxʷəbabš*), an ancestral band of the modern-day Puyallup people, have inhabited Gig Harbor, known in Lushootseed as *txʷaalqəʔ*, meaning "place where game exists"^[5] for millennia. There was a Puyallup settlement at the mouth of the harbor that included six houses, and a large longhouse. This village existed until the late 19th century, with the longhouse finally being torn down by settlers in 1915.^{[6][7]} The band was later relocated to the Puyallup Indian Reservation.

During a heavy storm in 1840, Captain Charles Wilkes brought the captain's gig (small boat) into the harbor for protection. Later, with the publication of Wilkes' 1841 map of the Oregon Territory, the sheltered bay was named in English as Gig Harbor by George Sinclair for his boat.

In 1867, fisherman Samuel Jerisich came to the Gig Harbor area, along with many other immigrants from Sweden, Norway, and Croatia. The town was platted in 1888 by Alfred M. Burnham, the owner of a local general store and native of Albert Lea, Minnesota, where he advertised opportunities in Gig Harbor.^{[6][8]}

Commercial fishing, boat building, and logging dominated

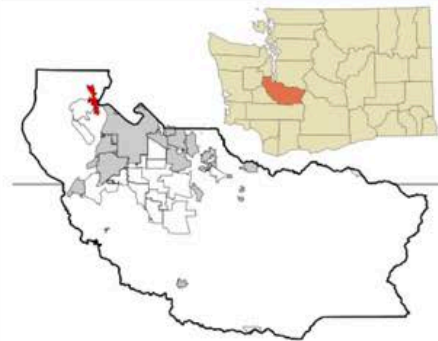
Gig Harbor, Washington

txʷaalqəʔ

City



Nickname(s): The Maritime City, The Harbor



Location of Gig Harbor, Washington
Coordinates: 47°19′37″N 122°35′11″W﻿ / ﻿47.327°N 122.586°W﻿ / 47.327; -122.586

Country	United States
State	Washington
County	Pierce

Government	
• Type	Strong Mayor
• Mayor	Tracie Markley

Area ^[1]	
• Total	6.12 sq mi (15.85 km ²)
• Land	5.90 sq mi (15.29 km ²)



Contact:
Dave Hilbert
Designated Broker
425-280-6542



**Scan For
Virtual
Tour**



[CLICK HERE FOR
VIRTUAL TOUR](#)

**Scan
For
All Sold
Listings**



[CLICK HERE TO
SEE SOLD LISTINGS](#)

**Scan To
Visit Us
On
Facebook!**



[CLICK HERE TO VISIT
US ON FACEBOOK](#)



Follow Us On Facebook!
Real Estate 2000 Corp
Dave Hilbert



**Come Check Out Our
Website!**

[CLICK HERE TO VISIT
OUR WEBSITE!](#)



Contact:
Dave Hilbert
Designated Broker
425-280-6542

