

27655 Middlebelt Rd

Farmington Hills, MI

- Fully Renovated Office Building
- New HVAC System
- Easy Access to I-696 & Northwestern Hwy
- Move-In Ready Office Suites Available
- Monument Signage Available

OFFICE BUILDING FOR LEASE

FOR MORE INFORMATION:

Aaron Smith
Vice President
248.637.3515
asmith@LMCap.com

Michael Elle
Sales Associate
248.637.3526
melle@LMCap.com



L. MASON CAPITANI

CORFAC INTERNATIONAL

CELEBRATING 60 YEARS

248.637.9700 | LMCap.com

Information contained herein was obtained from sources deemed to be reliable but is not guaranteed. Subjects to prior sales, changes of price or withdrawal.

27655 Middlebelt Rd

Farmington Hills, MI



L. MASON CAPITANI

CORFAC INTERNATIONAL

CELEBRATING 60 YEARS



248.637.9700 | LMCap.com

Information contained herein was obtained from sources deemed to be reliable but is not guaranteed. Subjects to prior sales, changes of price or withdrawal.

27655 Middlebelt Rd

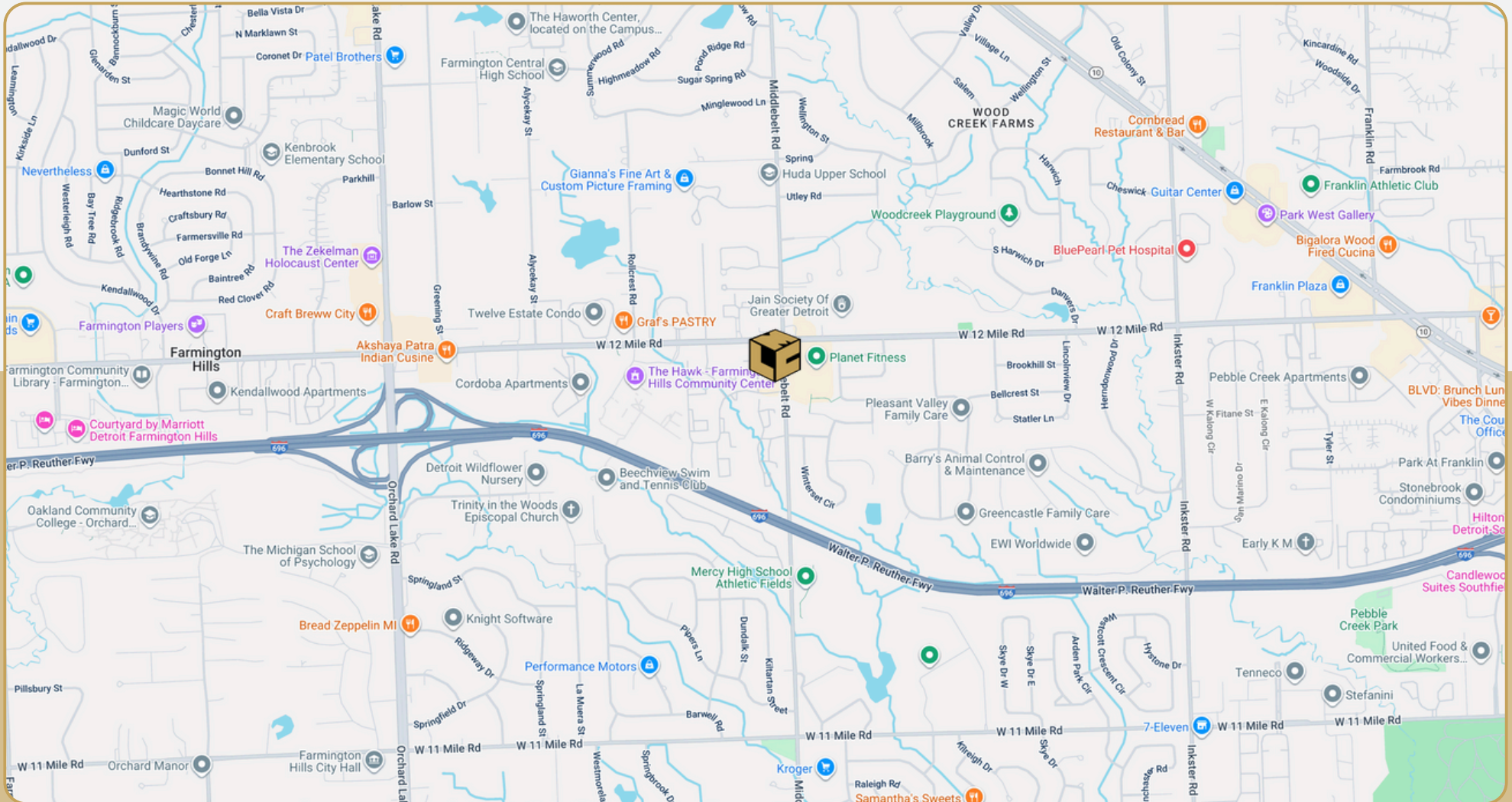
Farmington Hills, MI



L. MASON CAPITANI

CORFAC INTERNATIONAL

CELEBRATING 60 YEARS



248.637.9700 | LMCap.com

Information contained herein was obtained from sources deemed to be reliable but is not guaranteed. Subjects to prior sales, changes of price or withdrawal.

27655 Middlebelt Rd

Farmington Hills, MI



Office Property Details:

Details:

Location Description: 12 Mile & Middlebelt

Building Type: Office/Medical

Class: B

Zoning: Office

Floors: 1

Year Built: 1986

Year Renovated: 2019

Gross SF: 15,488 SF

Total Rentable SF: 15,488 SF

Available SF: 4,290 SF

Min/Max SF: 1,260 SF - 4,290 SF

Acres: 1.20

Multitenant: Yes

Parcel ID: 23-14-226-026

Property Description: Fully renovated office building under new ownership and management. Features include a new HVAC system, move-in ready office suites, monument signage availability, and easy access to I-696 and Northwestern Highway.

Economic:

Min/Max Rental Rate: \$16.00/SF

Rental Terms: Mod. Gross + Utilities & Janitorial

Annual Escalations: \$0.50/SF

Load Factor: 11.3%

Occupancy: 72%

Parking: 3.87/1,000

Partition Allowance: Negotiable

Signage: Monument

Status: Existing

27655 Middlebelt Rd

Farmington Hills, MI



L. MASON CAPITANI

CORFAC INTERNATIONAL

CELEBRATING 60 YEARS

Available Suites:



Suite 160: 1,260 SF

Suite 170: 3,030 SF

Suite 160/170: 4,290 SF

248.637.9700 | LMCap.com

Information contained herein was obtained from sources deemed to be reliable but is not guaranteed. Subjects to prior sales, changes of price or withdrawal.

27655 Middlebelt Rd

Farmington Hills, MI

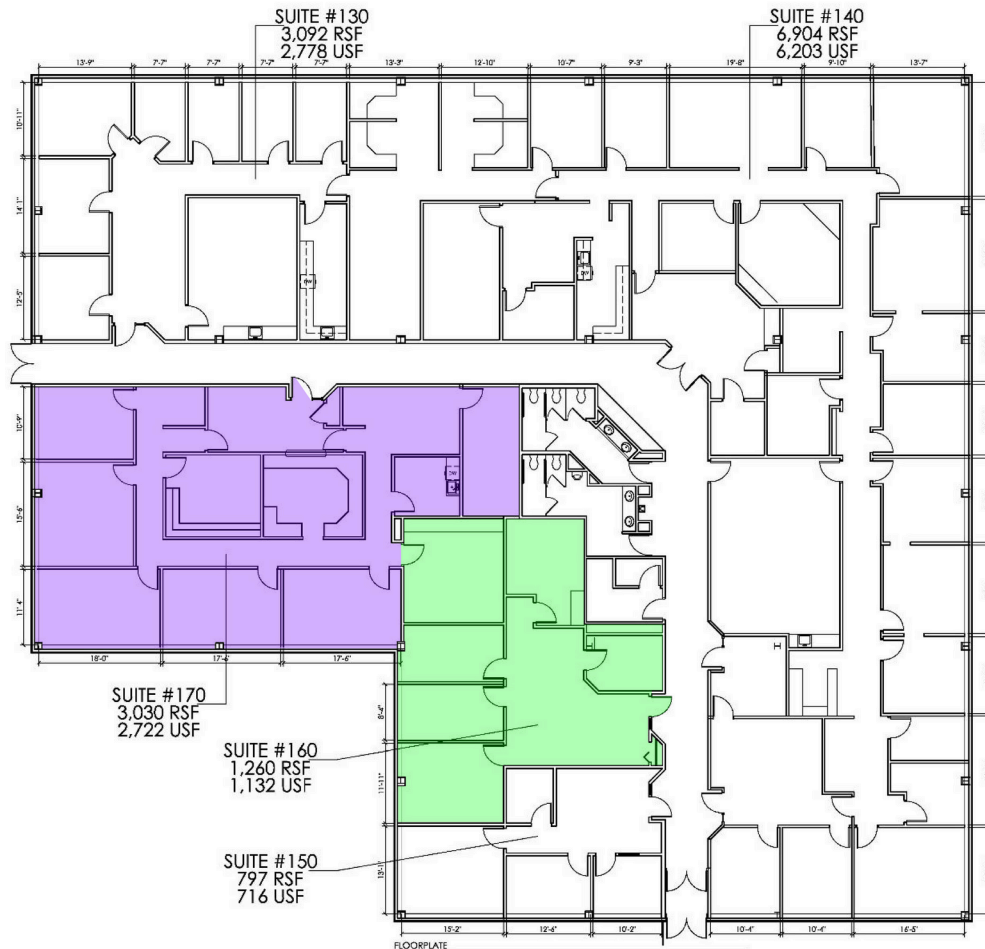


L. MASON CAPITANI

CORFAC INTERNATIONAL

CELEBRATING 60 YEARS

First Floor Vacancies



Suite Number	Square Footage	Video Tour
160	1,260 SF	
170	3,030 SF	
160/170	4,290 SF	View Here

248.637.9700 | LMCap.com

Information contained herein was obtained from sources deemed to be reliable but is not guaranteed. Subjects to prior sales, changes of price or withdrawal.