



google earth
© 2016

For Sale

62.45 Acres Industrial Land • Property Highlights

Pleasant Valley Road | Brighton, Michigan

- Owner Will Build-to-Suit
- Zoned Industrial/Possible Residential
- Municipal Sewer
- Wooded Setting With Many Possible Building Options
- Approximately 4,899 linear feet on I-96
- Minutes From Island Lake State Recreation Area
- Sale Price: \$1,350,000.00

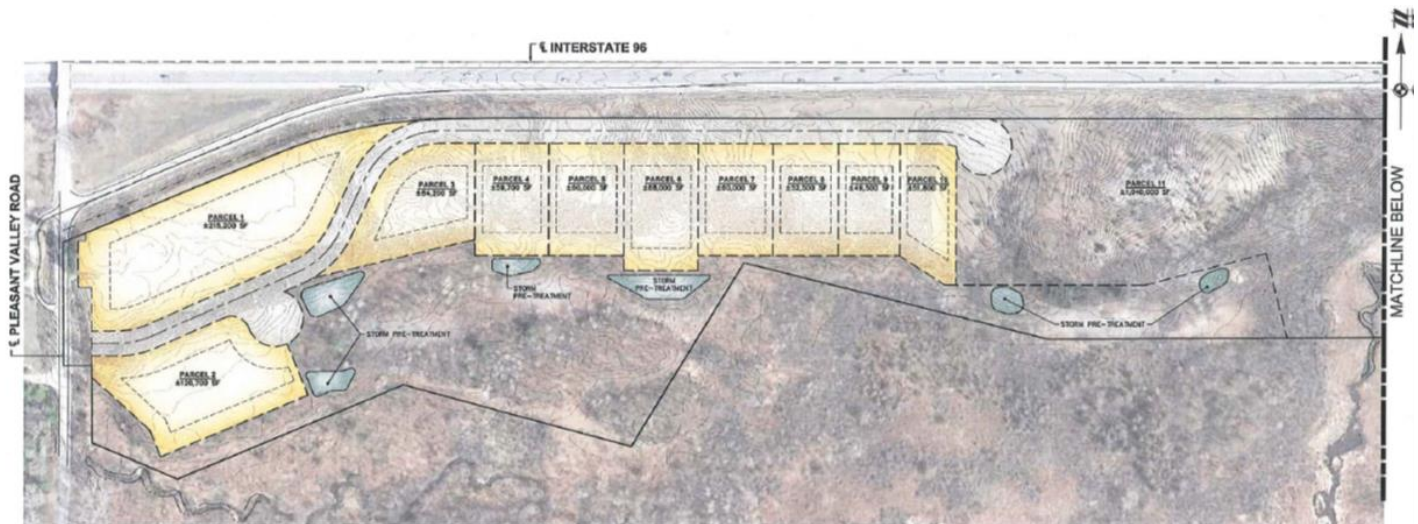


Paul Gobeille
Direct | +1 248 226 1684
paul.gobeille@colliers.com



Eric Rudland
Direct | +1 734 769 5012
eric.rudland@colliers.com

Concept Plan and Site Data



SITE DATA BLOCK

PARCEL DATA	
SITE ZONING	I-1 (INDUSTRIAL)
LOT REQUIREMENTS	
MINIMUM LOT AREA	40,000 SF
MINIMUM LOT WIDTH	150'
SETBACKS	
BUILDING SETBACKS	
FRONT	60'
SIDE	20'
REAR	50'
PARKING SETBACKS	
FRONT	60*
SIDE/REAR	10'
<i>*VISITOR PARKING MAY BE REDUCED TO 40'</i>	
BUILDING & LOT COVERAGE	
MAX. BUILDING HEIGHT	40'
MAX. BUILDING STORIES	4
MAX. LOT COVERAGE	50%

62.45 Acres Industrial Land
Pleasant Valley Road | Brighton, Michigan



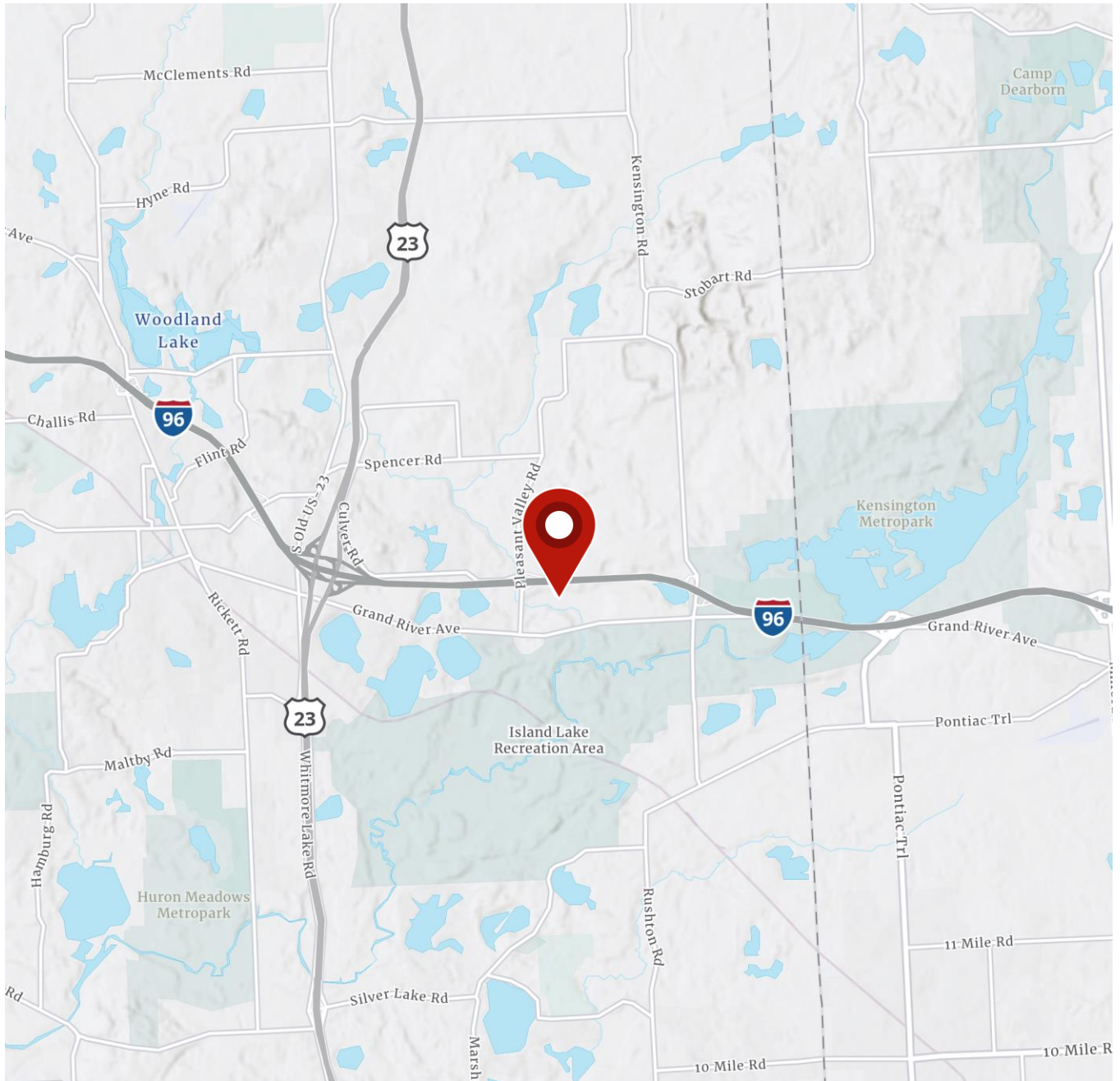
Aerial



62.45 Acres Industrial Land
Pleasant Valley Road | Brighton, Michigan



Location Map



Paul Gobeille
Direct | +1 248 226 1684
paul.gobeille@colliers.com



Eric Rudland
Direct | +1 734 769 5012
eric.rudland@colliers.com