

FOR LEASE

SILVERADO PARK PLACE

9550 S Eastern Avenue, Las Vegas, NV 89123



Pete Janemark, CCIM

Senior Vice President

D: 702.527.7923 | C: 702.885.7383

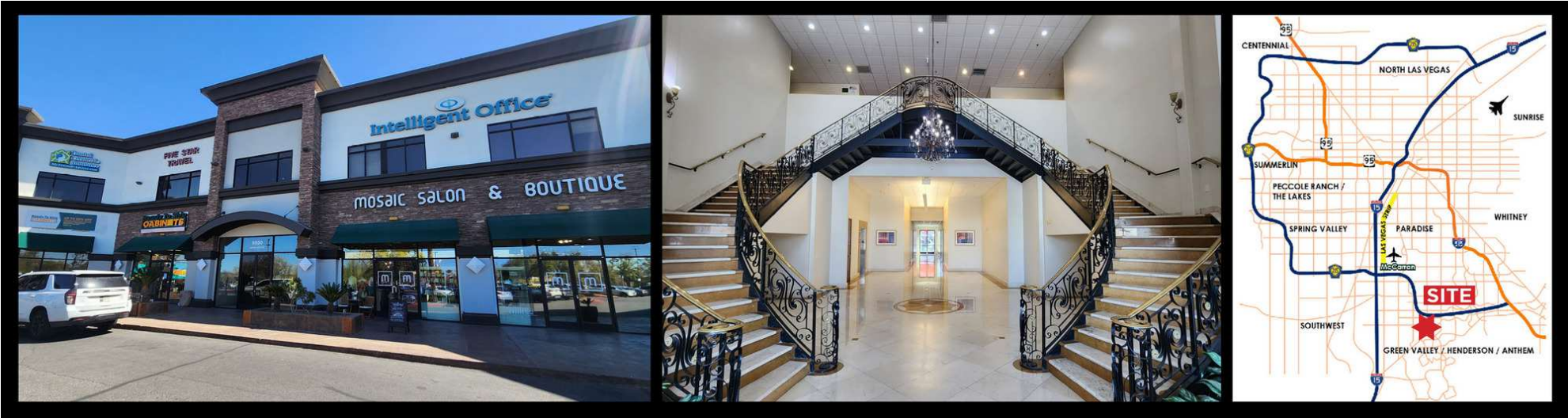
pete.janemark@svn.com

NV #S.76731



All SVN® offices are independently owned and operated.

PROPERTY SUMMARY



OFFERING SUMMARY

BUILDING SIZE:	98,973 SF
AVAILABLE SF:	Contact Listing Broker
LOT SIZE:	4.08 Acres
YEAR BUILT:	2007
ZONING:	CC
APN:	177-24-411-003

PROPERTY OVERVIEW

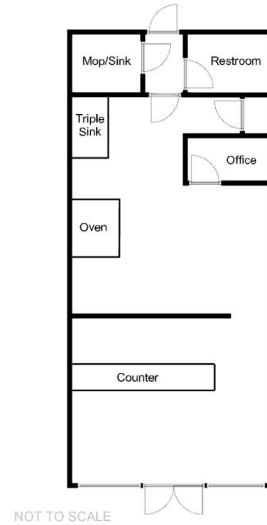
Silverado Park Place is a large two-story office over retail building in the busy South Eastern Avenue corridor. The property features elegant marble hallways and bright open spaces. Parking is abundant immediately in front of the building. Landscaping consists of mature trees and bushes.

PROPERTY HIGHLIGHTS

- Stylish Architecture
- Lavish Entry and Lobby
- Freeway Close
- Ample Parking
- Mature Landscaping
- Abundant Nearby Services

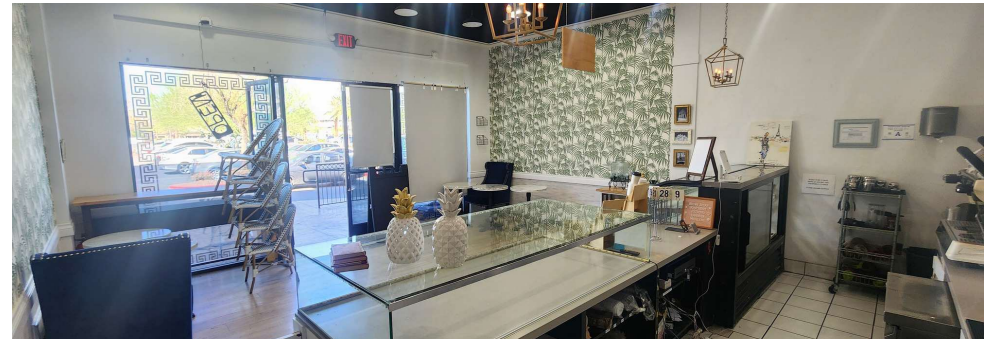
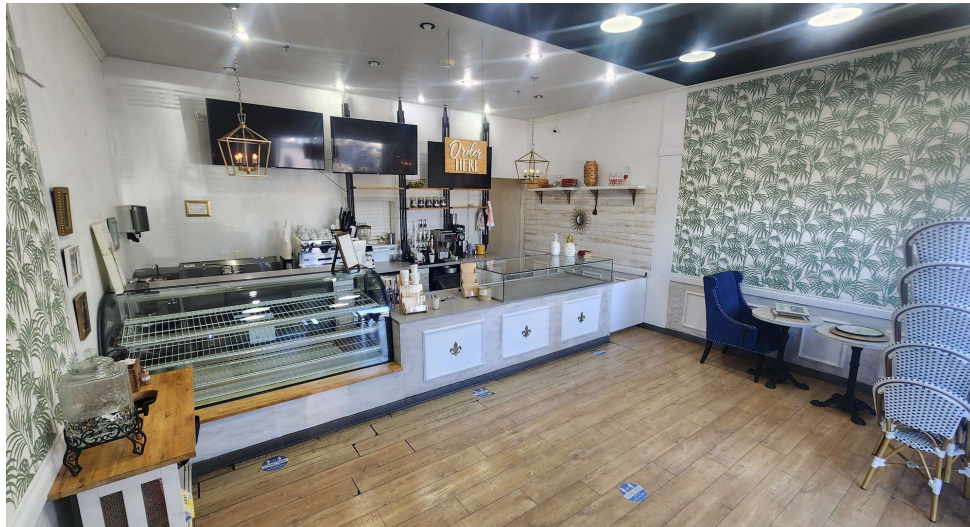
PETE JANEMARK, CCIM
O: 702.527.7923
pete.janemark@svn.com
NV #S.76731

9550 S EASTERN AVENUE - SUITE 110 - ±1,540 SF



SUITE DESCRIPTION

This former bakery features a customer area and a service counter facing the public, and a bakery facility in the back. This lease includes the use of the extensive list of equipment available, including refrigerators, ovens, prep tables, bakery racks, etc. The space also features a small back office, a mop sink/storage room, one restroom, and an exit door in the back.



PETE JANEMARK, CCIM

O: 702.527.7923

pete.janemark@svn.com

NV #S.76731

RETAILER MAP



PETE JANEMARK, CCIM
O: 702.527.7923
pete.janemark@svn.com
NV #S.76731