



Needleman Management Co., Inc.
1060 North Kings Highway, Suite 250
Cherry Hill, NJ 08034
856-482-5959

BROWN & CONNERY BUILDING

6 North Broad Street, Woodbury, NJ



Property Features & Description

- ◆ Beautiful three-story professional office building.
- ◆ Located in the center of Woodbury close to the Court House extension and various business amenities.
- ◆ Assigned under-building parking and Free Parking Garage nearby.

Availability

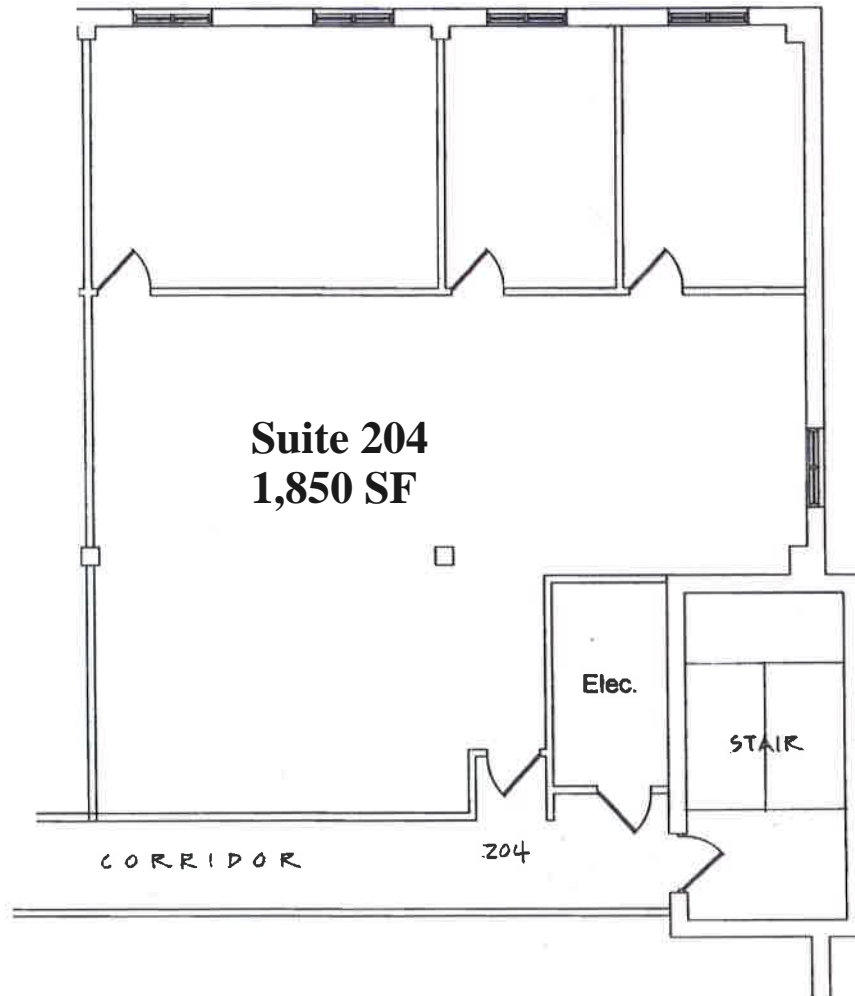
- ◆ Suite 204 containing 1,850 SF
- ◆ Suite 205 containing 1,350 SF
- ◆ Suite 305 containing 1,850 SF

FOR MORE INFORMATION

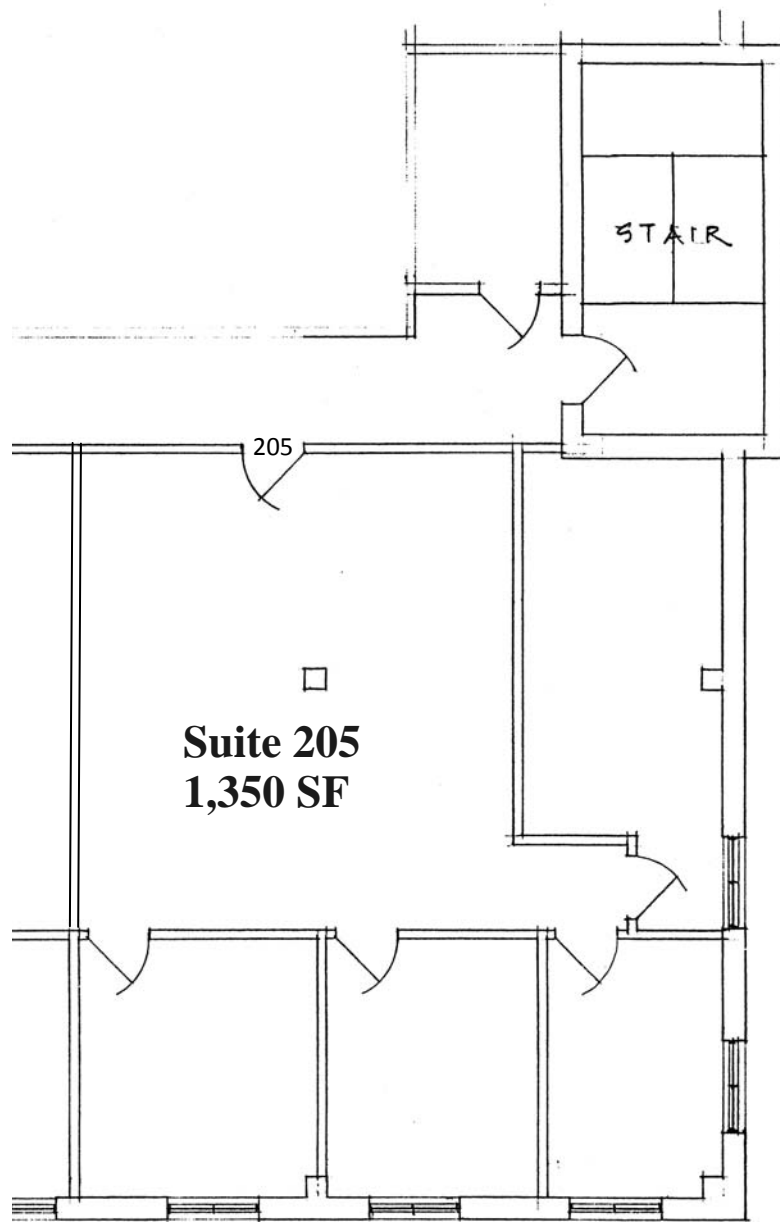
David L. Cohen
David@NeedlemanRE.com
Cell: 609-820-0848



Jackie Needleman
Jackie@NeedlemanRE.com
Cell: 609-820-0869



<p>NEEDLEMAN MANAGEMENT COMPANY Leasing and Property Management 856-482-5959</p>	<p>6 NORTH BROAD STREET Suite 204 Woodbury, New Jersey</p>		
<p>RAYMOND KLUMB ARCHITECT 571 N. Frontage Road, PO Box 126 Pearce, AZ 85625</p>	<p>Scale/Paper Size 3/32"=1'-0" 8-1/2x11</p>	<p>Date 04/02/2010</p>	<p>Dwg EXISTING CONDITIONS</p>
<p>Plan developed from information provided by the Owner and previous survey by the Architect; existing conditions have not been re-verified. Room sizes and dimensions are approximate and subject to verification of field conditions. Drawings sent by PDF or facsimile are subject to distortion of scale.</p>			



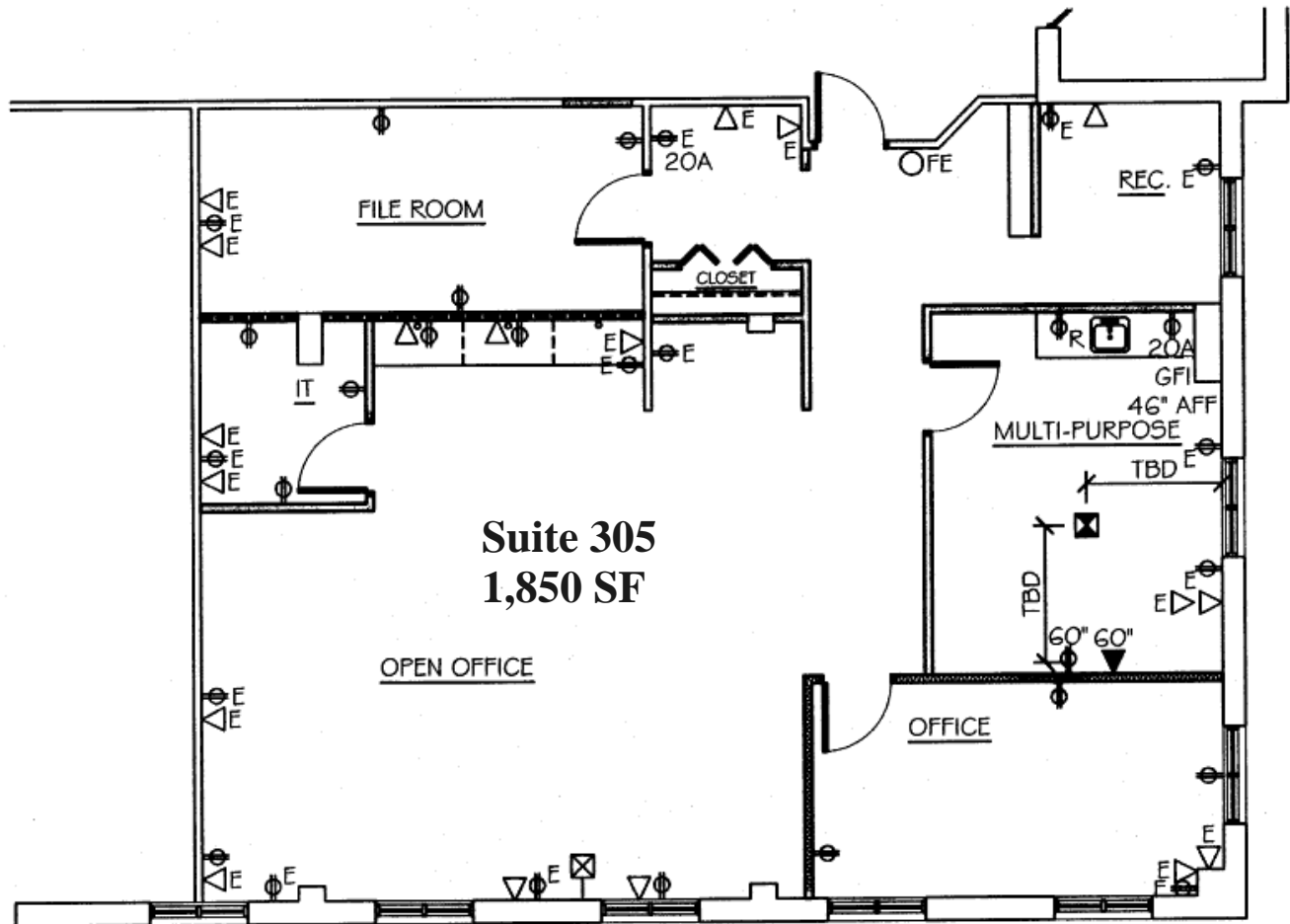
Needleman Management Co., Inc.

1060 North Kings Highway
Suite 250
Cherry Hill, NJ 08034

Phone: 856-482-5959 Fax: 856-482-6215
www.NeedlemanRE.com

6 North Broad Street
Suite 205
Woodbury, New Jersey 08096

Subject to errors, omissions and changes. This is not an
actual architectural drawing.
All lines and dimensions are approximate.



<p>Needleman Management Co., Inc. 1060 North Kings Highway Suite 250 Cherry Hill, NJ 08034</p>	<p>6 North Broad Street Suite 305 Woodbury, New Jersey</p>
<p>Phone: 856-482-5959 Fax: 856-482-6215 www.NeedlemanRE.com</p>	<p>Subject to errors, omissions and changes. This is not an actual architectural drawing. All lines and dimensions are approximate.</p>