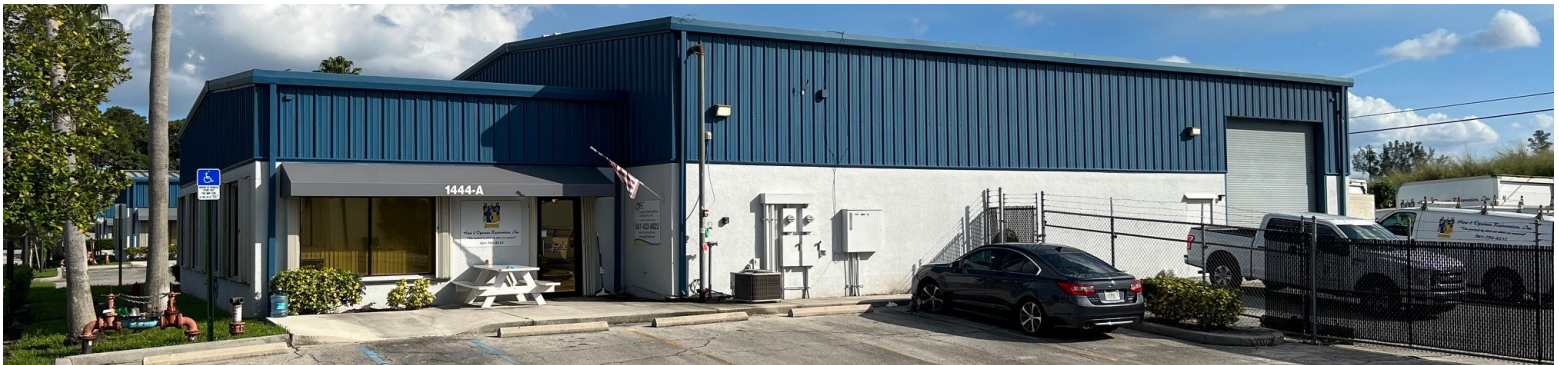
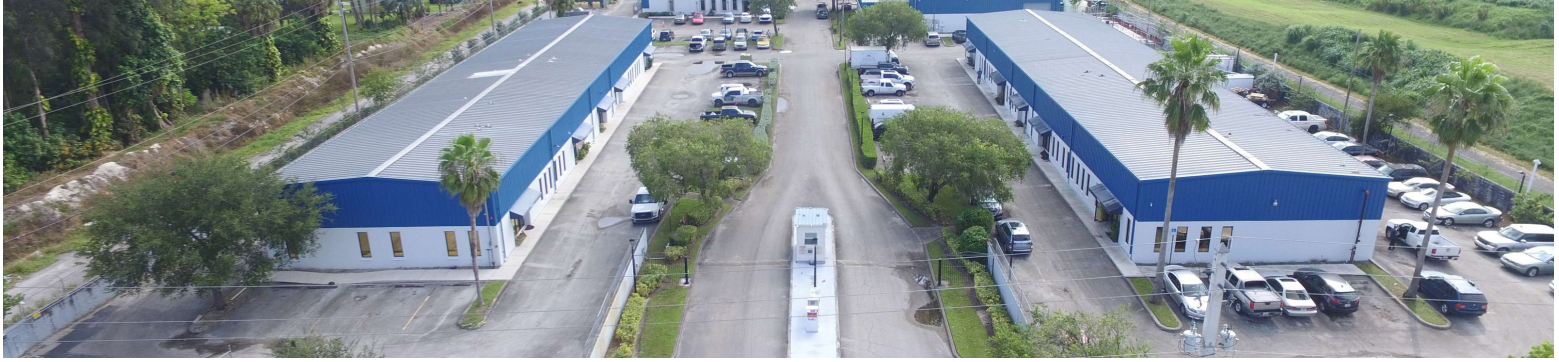


## SKEES ROAD INDUSTRIAL PARK



### 3,000 SF OFFICE / WAREHOUSE FOR LEASE

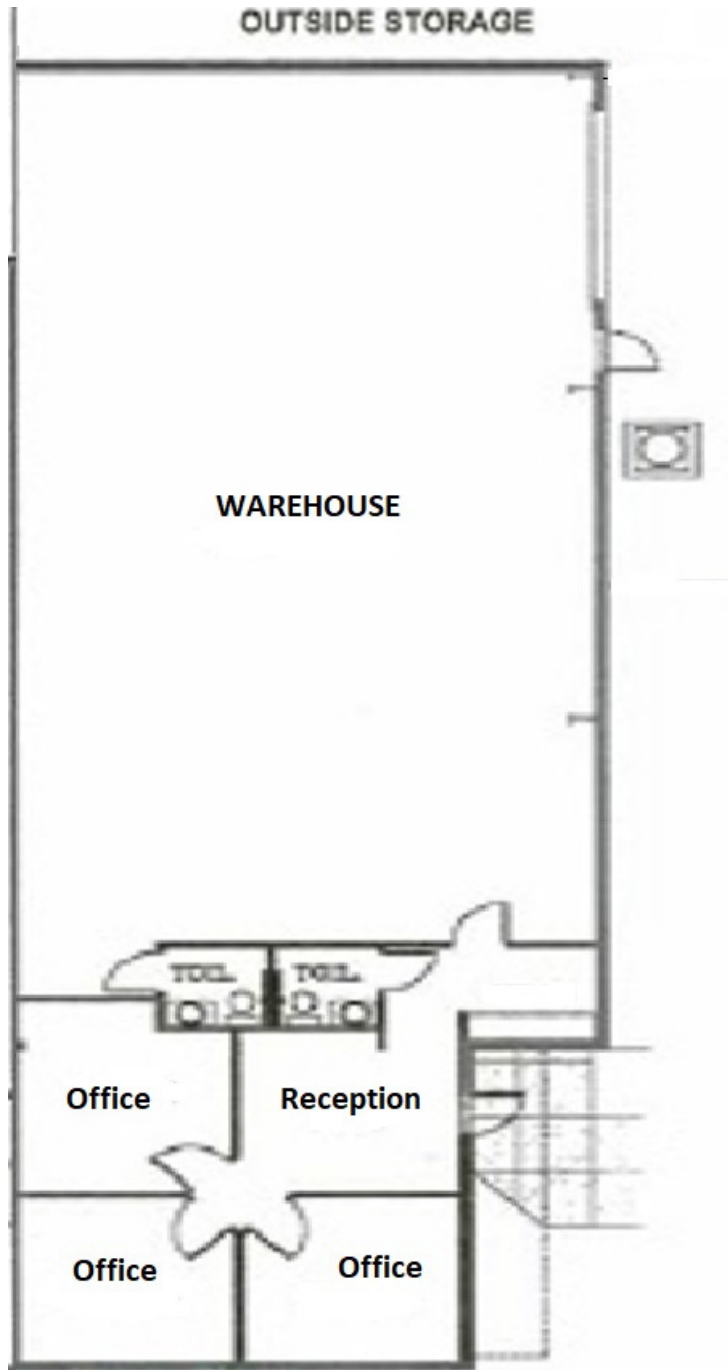
**1444 SKEES ROAD, UNIT A WEST PALM BEACH, FL 33411**

Zoning:	Industrial
Property Type:	Office /Warehouse
Space Available:	3,000 SF
Min Divisible:	3,000 SF
Lease Type:	NNN
Lease Rate PSF Annual:	\$18.50
Operating Expenses PSF:	\$6.88
Total Monthly Rent:	\$6,345.00

This flex office/warehouse has approximately 1,000 sq ft of office space consisting of a reception, 3 private offices, kitchenette area, and 2 restrooms. The warehouse space is approximately 2,000 SQ FT, and consists of 18-foot ceilings and (1) 14 X 14 foot overhead door. There is also a private fenced & gated parking area that adjoins the building that can be used for secure parking and storage.

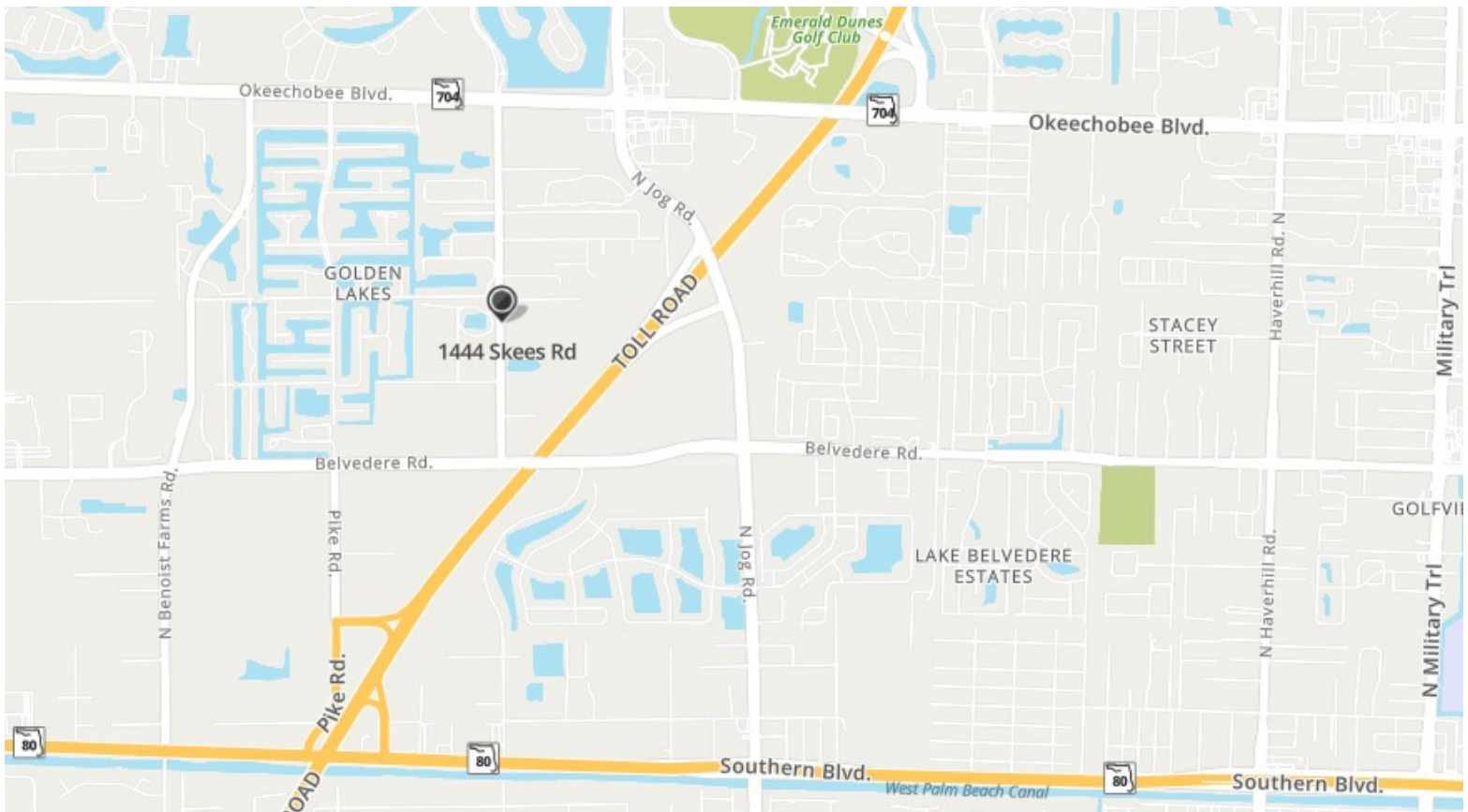
Great Location! 3 Phase electric! This industrial complex consists of 9 buildings totaling 73,000 sf. The buildings are CBS and metal construction. Each unit has a glass storefront entrance and 14 X 14 foot Grade Level Roll-up Doors. Ceiling heights are 18 to 21 ft Clear. Great Location for a variety of businesses! This complex is located on the east side of Skees Road in between Belvedere Road and Okeechobee Boulevard. Directly across from the Hippocrates Health Institute.

# Floor Plan



# CORNERSTONE

Realty, Inc.



**Cornerstone Realty, Inc**  
**8233 Gator Lane, Suite 18**  
**West Palm Beach, FL 33411**  
**(561)793-9810**  
**www.cri-re.com**



**Contact: Devin Schmidt**  
**devin@cri-re.com**  
**561-793-9810**

**www.cri-re.com**