

Retail Space Available

Bardstown Road at Hikes Lane

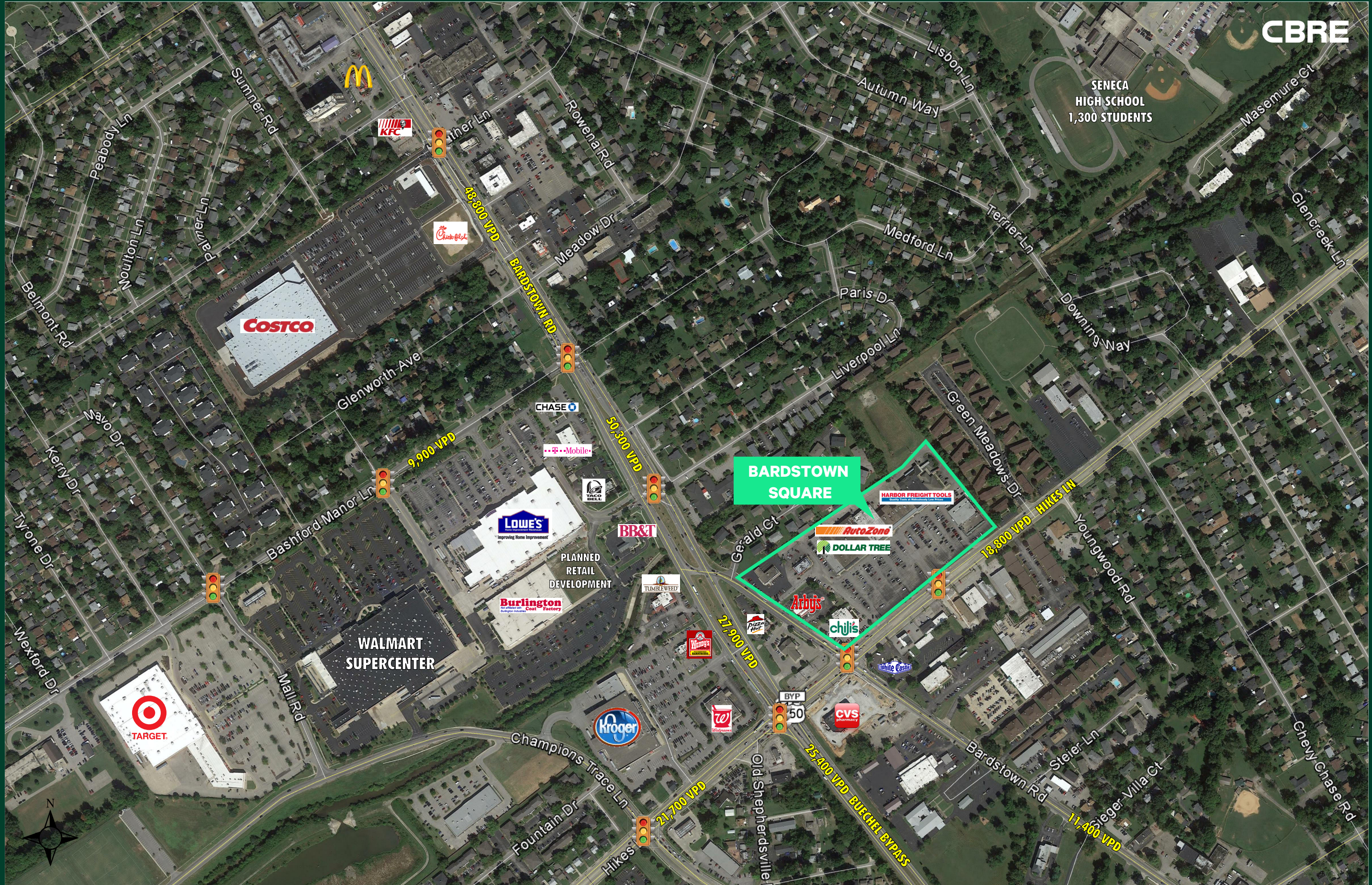
Bardstown Square
2251 Hikes Lane
Louisville, KY



Property Brochure

- + 5,080± square foot inline space available
- + Signalized access from Hikes Lane
- + Across Bardstown Road from Kroger
- + Near Target, Lowes, Walmart and Costco

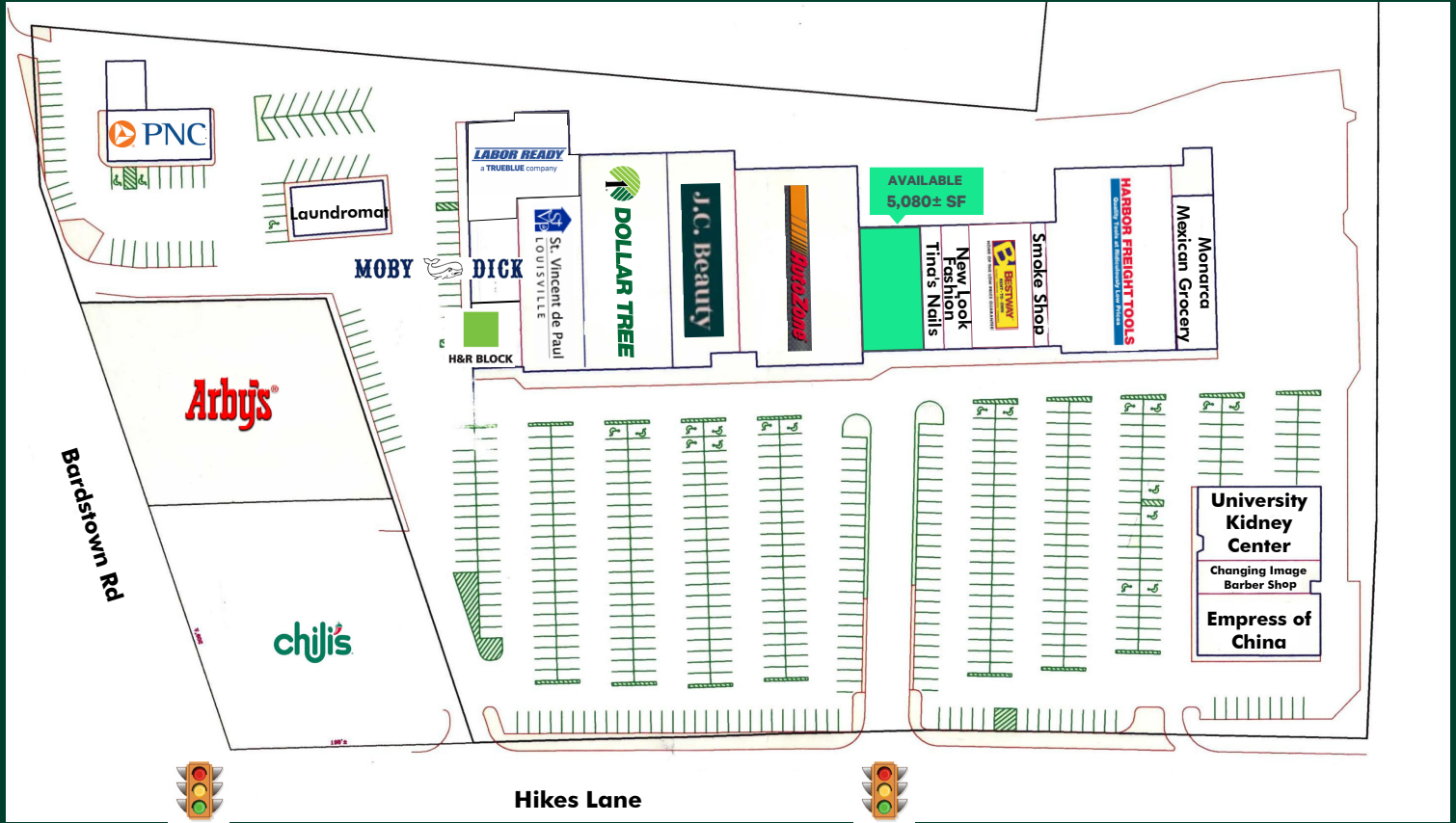
- + Bardstown Road traffic count: 27,900 VPD;
Hikes Lane: 18,800 VPD



Retail Space

Bardstown Square | 2251 Hikes Lane | Louisville, KY

For Lease



2022 Estimated Demographics	1 Mile	2 Miles	3 Miles	4 Miles
Population	13,355	50,354	97,548	172,032
Daytime Population	13,170	62,486	118,546	193,331
Average Household Income	\$69,514	\$77,641	\$87,534	\$91,534

Contact Us

Clay Hunt

First Vice President
+1 502 412 7607
clay.hunt@cbre.com

Robert Schwartz

Senior Vice President
+1 502 412 7606
robert.schwartz@cbre.com

Bryan Schwartz

Associate
+1 502 412 7635
bryan.schwartz@cbre.com

© 2024 CBRE, Inc. All rights reserved. This information has been obtained from sources believed reliable but has not been verified for accuracy or completeness. CBRE, Inc. makes no guarantee, representation or warranty and accepts no responsibility or liability as to the accuracy, completeness, or reliability of the information contained herein. You should conduct a careful, independent investigation of the property and verify all information. Any reliance on this information is solely at your own risk.