

FOR LEASE
\$30.00 RSF Full Service

1230 MAIN
STREET

FIRST CITIZENS CENTER

CONTACT

PEYTON BRYANT, CCIM, SIOR MANAGING PARTNER | pbryant@trinity-partners.com | 803.567.1428

**TRINITY
PARTNERS**



1230 MAIN STREET

LEASING OPPORTUNITIES

LEASE RATE

\$30.00 RSF

Full Service

AVAILABLE SF

±3,345 SF

PROPERTY HIGHLIGHTS

Referred to as the **First Citizens Center**, this **±170,000 SF** building is centrally located in **Downtown Columbia** in the **Central Business District**

This **9-story building** was completed in 2006 and has **high-end finishes including floor-to-ceiling windows**, an underground parking garage for employees, and a surface parking lot for visitors

3,345 SF available on the 3rd floor

Existing third floor tenants include **two regional law firms** and a **national financial brokerage firm**

1230 MAIN STREET



CONTACT

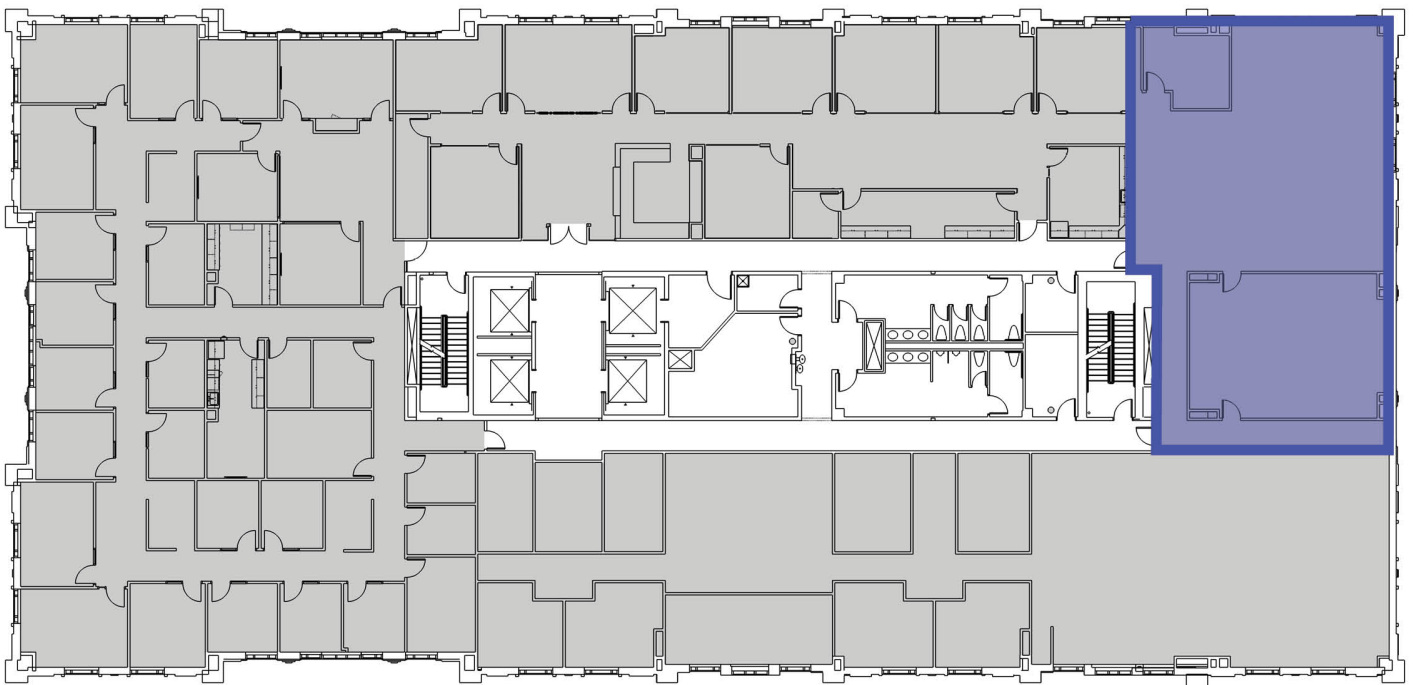
PEYTON BRYANT, CCIM, SIOR MANAGING PARTNER | pbryant@trinity-partners.com | 803.567.1428

TRINITY
PARTNERS

1230 MAIN STREET

THIRD FLOOR FLOOR PLAN

FOR LEASE: 3,345 SF
\$30.00 RSF Full Service



CONTACT

PEYTON BRYANT, CCIM, SIOR MANAGING PARTNER | pbryant@trinity-partners.com | 803.567.1428





Downtown Columbia

LOCATION DOESN'T GET MUCH BETTER THAN THIS.

1230 Main Street is centrally located in the Central Business District within walking distance to South Carolina's State House and premier restaurants, hotels, and businesses in The Vista entertainment district and only blocks from University of South Carolina.



CONTACT

PEYTON BRYANT, CCIM, SIOR MANAGING PARTNER | pbryant@trinity-partners.com | 803.567.1428



1230 MAIN STREET

FOR MORE INFORMATION OR TO
TOUR 1230 MAIN STREET, CONTACT

PEYTON BRYANT, CCIM, SIOR

MANAGING PARTNER

pbryant@trinity-partners.com | 803.567.1428

**TRINITY
PARTNERS**