

# 201 KRIEBEL AVENUE

LANSDALE, PA 19446

**THE BUILDING CAN NOW BE DIVIDED FROM 10,000 SF - 35,000 SF FOR FLEX AND INDUSTRIAL USERS. AVAILABLE NOW!**



## AVAILABLE FOR LEASE

REPRESENTED BY  
THE FLYNN COMPANY

KEVIN FLYNN JR  
KFLYNNJR@FLYNNCO.COM  
215-561-6565 X 121

MICHAEL BORSKI JR., SIOR  
MBORSKIJR@FLYNNCO.COM  
215-561-6565 X 119

MARK PAWLOWSKI  
MPAWLOWSKI@FLYNNCO.COM  
215-561-6565 X 146

The  
Flynn  
Company

### PROPERTY DETAILS:

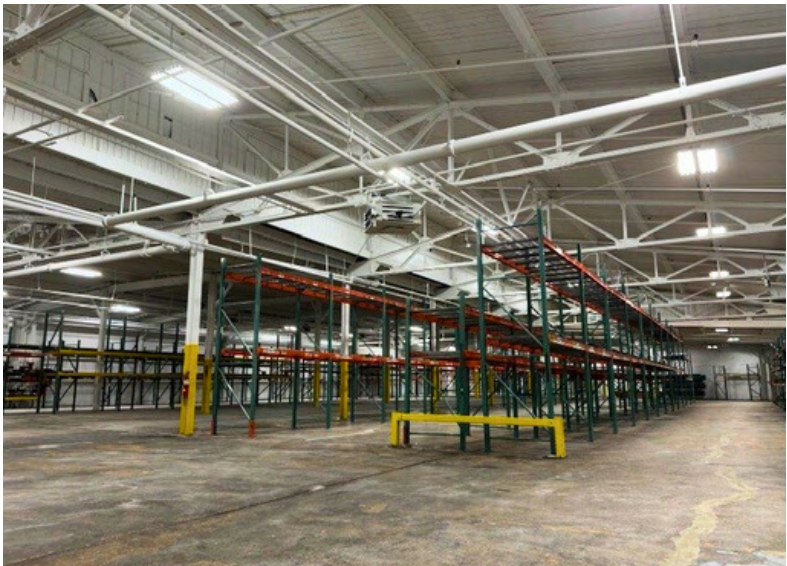
Lease: \$9.95 SF NNN

- **Building Size -** 35,500 SF
- **Lot Size -** 1.32 acres
- **Available -** 35,500 SF
- **Office Space -** Approximately 3,000 SF
- **Ceiling Height -** 14'-15'
- **Loading -** Three (3) loading docks
- **Power -** 480V, 1,000 AMPS, 3 phase
- **Fire Protection -** 100% Sprinklered

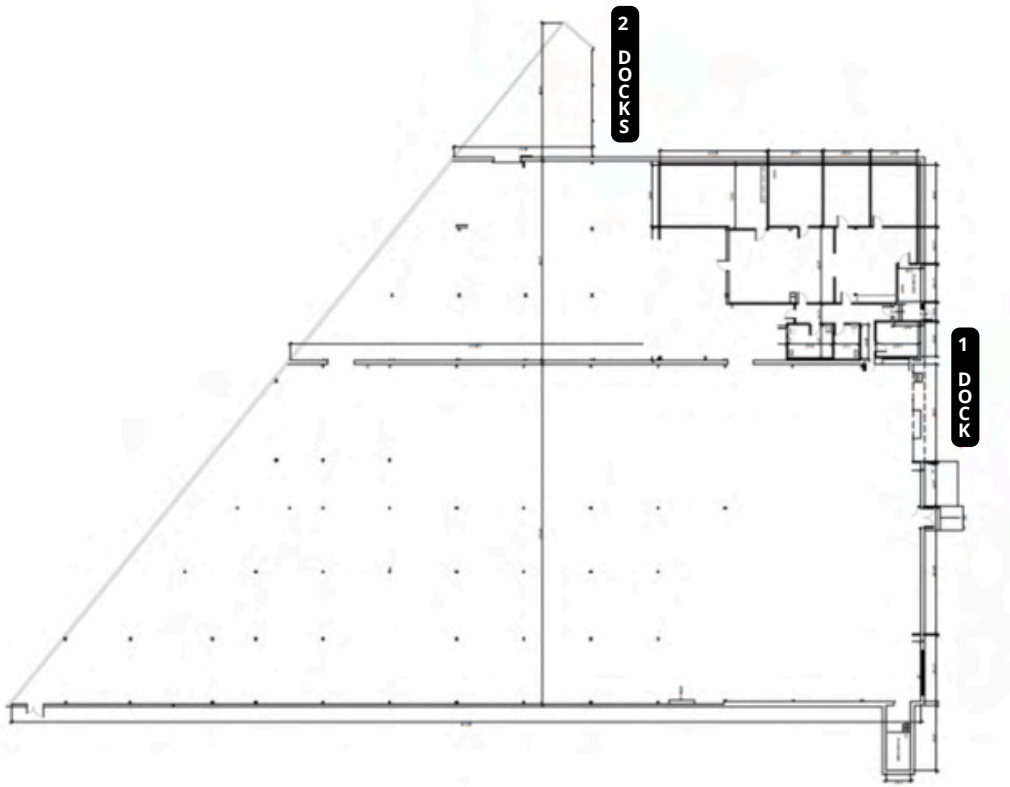
THE FLYNN COMPANY

WWW.FLYNNCO.COM | 1621 WOOD STREET, PHILADELPHIA, PA 19103 | 215.561.6565

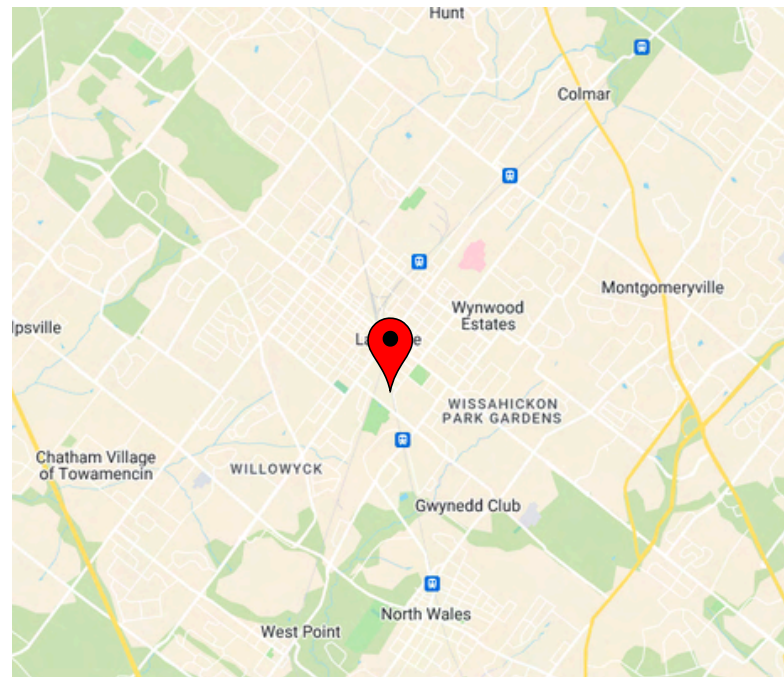
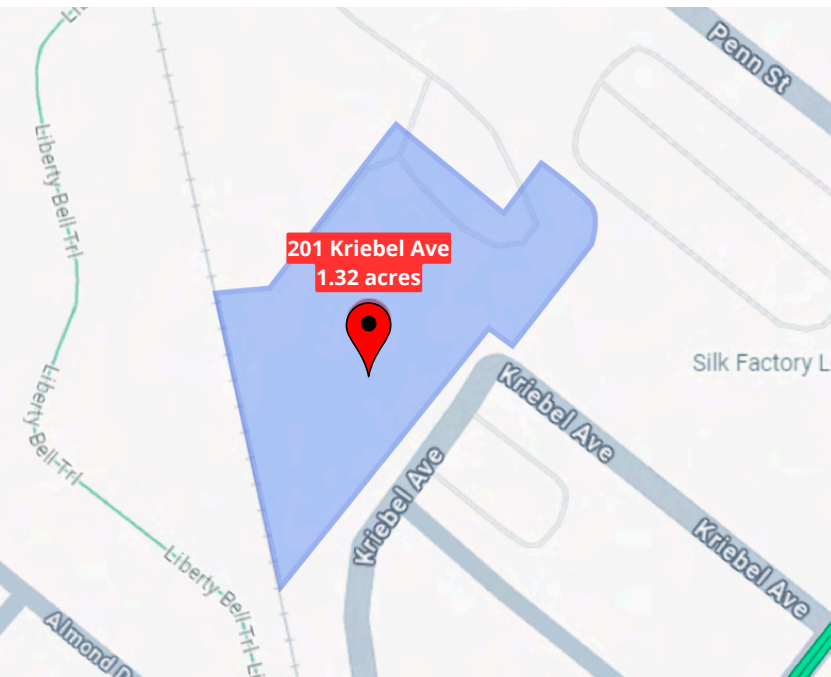
## PROPERTY PHOTOS



## FLOOR PLAN



## LOCATION



**For More Information  
Please Contact:**

**KEVIN FLYNN JR**  
KFLYNNJR@FLYNNCO.COM  
215-561-6565 X 121

**MICHAEL BORSKI JR., SIOR**  
MBORSKIJR@FLYNNCO.COM  
215-561-6565 X 119

**MARK PAWLOWSKI**  
MPAWLOWSKI@FLYNNCO.COM  
215-561-6565 X 146