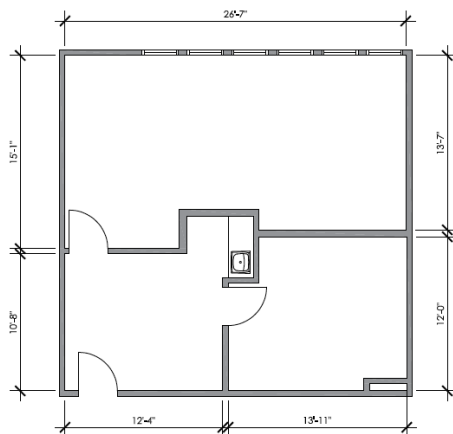
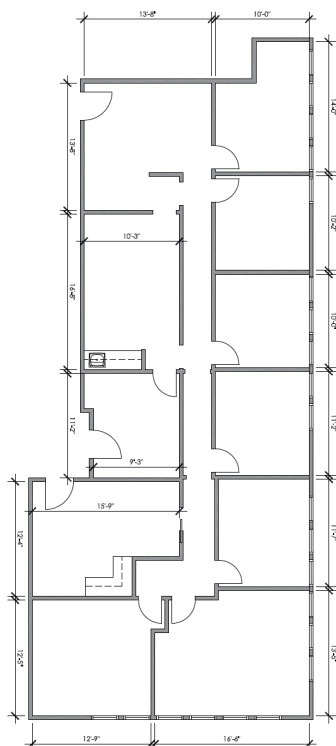


A photograph of a two-story modern building with a light-colored facade and large windows. The building has a flat roof and a prominent corner. In front of the building are several palm trees and other greenery. A white car is parked on the street in front of the building. The address number '979' is visible on the building's facade.

USE: Professional Office

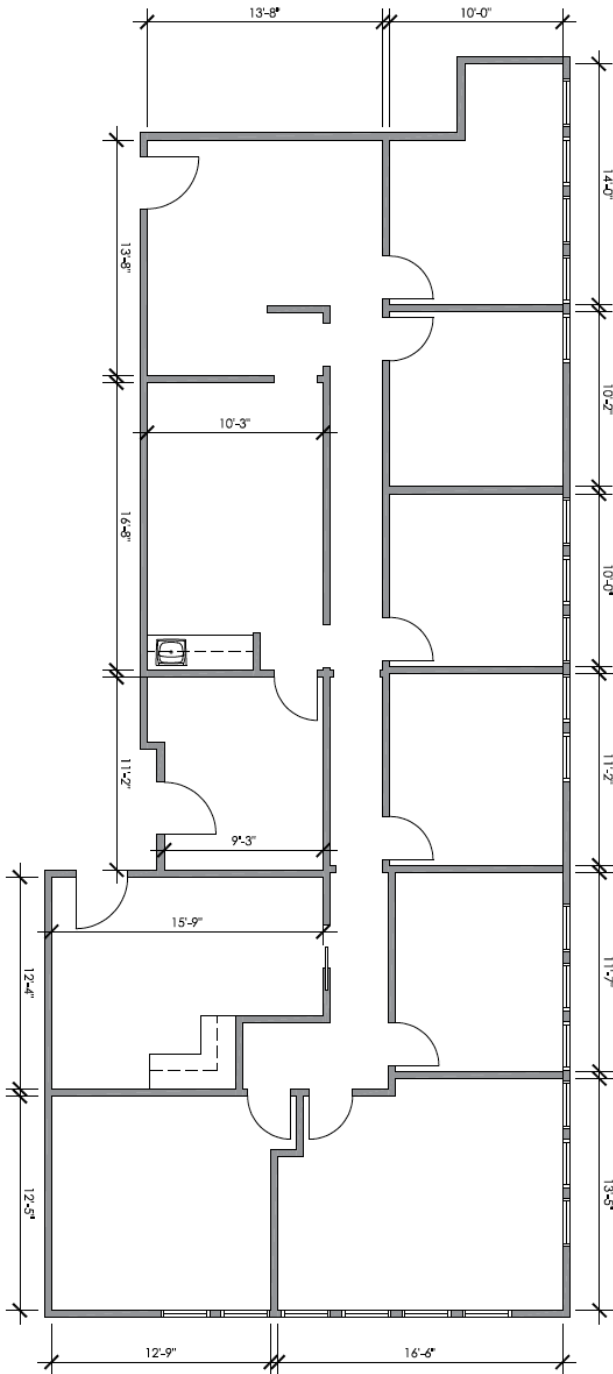
EASY TOUR - JUST CALL



- Functional Layout with lots of Windows
- Covered Parking
- Low HOA (\$292 per Unit)
- Elevator Served
- One Block from El Cajon Court
- Walkable to Downtown Retail
- Flexible Unit Sizes
- All are Water / Sewer Served



[275 E. DOUGLAS AVE # 111 EL CAJON CA]



Suite 111:

- Functional Layout with lots of Windows
- 775 - 1,143 sf
- Can be Split easily - 2 Meters & Water / Sewer Served

Suite 108:

- Functional Layout with lots of Windows
- 729 sf
- Large Conference, Reception, Office & Kitchenette

