

# Raintree Corporate Center I | 15333 N Pima Rd, Scottsdale, AZ

±5,999 RSF | Suite 260 Sublease | Call Broker for Pricing



**SUBLEASE AVAILABLE IMMEDIATELY**

**Class-A, Turnkey, Office Sublease, with Podcasting Studios**  
Sublease Expiration 10/31/29

**Dylan Whitwer**

dylan.whitwer@naihonorizon.com | +1 602 393 6609

**Don Morrow**

don.morrow@naihonorizon.com | +1 602 393 6608

**NAI Horizon**

2944 N 44th St, Suite 200  
Phoenix, AZ 85018

602 955 4000 | [naihonorizon.com](http://naihonorizon.com)

All information furnished regarding property for sale, rental or financing is from sources deemed reliable, but no warranty or representation is made to the accuracy thereof and same is submitted subject to errors, omissions, change of price, rental or other conditions prior to sale lease or financing or withdrawal without notice. No liability of any kind is to be imposed on the broker herein.

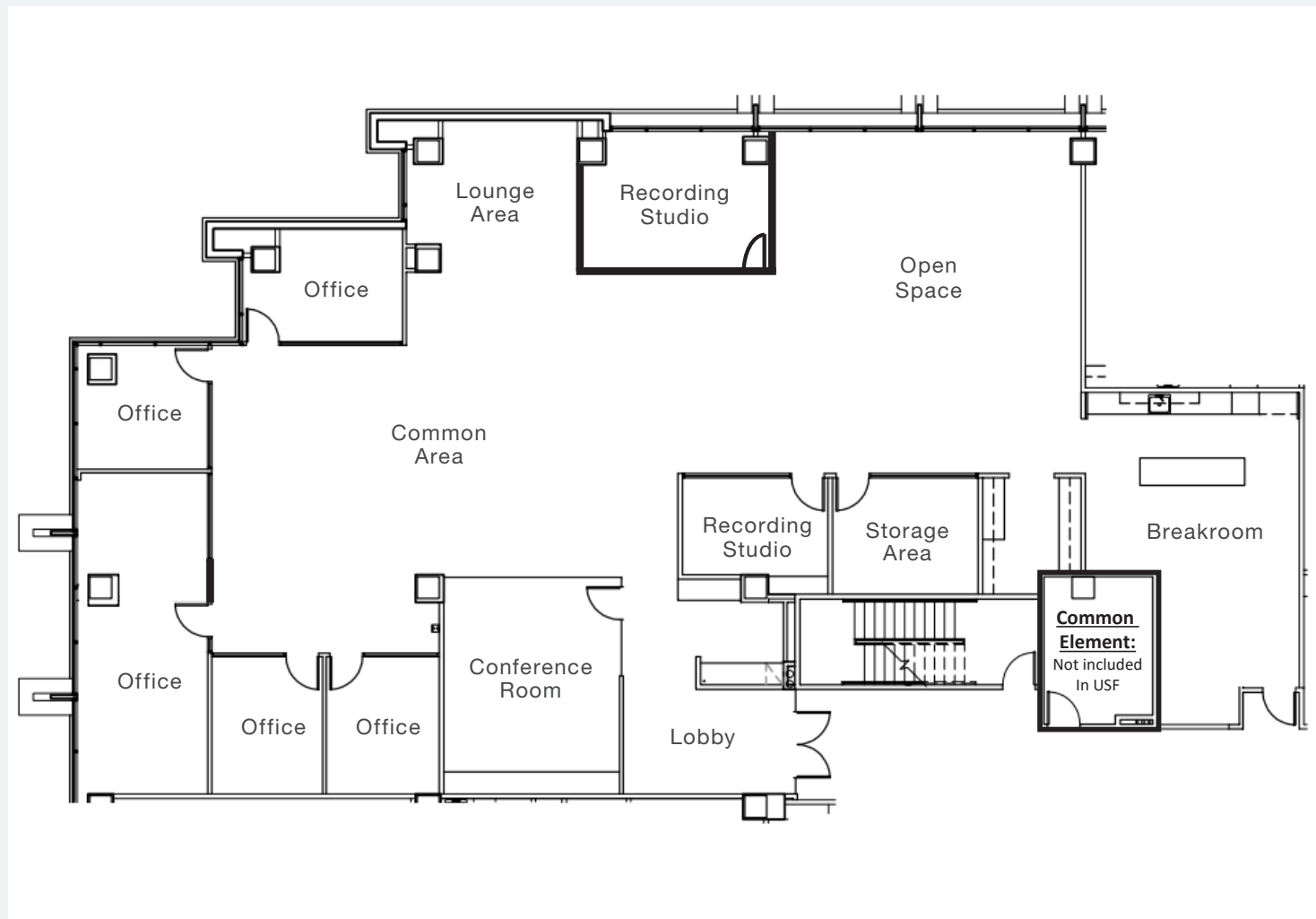
# Suite 260 Floor Plan

## Class A Sublease With Fully Equipped Recording and Video Podcast Studio

- Modern furniture, fixtures, and equipment throughout the space
- Decision Maker office with private lounge
- Building conference room available to Subtenant
- Parking available:
  - 2 reserved covered
  - 3 unreserved covered
  - 12 unreserved uncovered parking stalls
- Easy access to Loop 101 north and within 1.5 miles to Scottsdale Airport, TPC Golf Course, multiple luxury hotel brands, and numerous retail outfitters
- Full Service Lease
- Contact agent for pricing



Scan For Virtual Tour



**Dylan Whitwer**

dylan.whitwer@naihorizon.com | +1 602 393 6609

**Don Morrow**

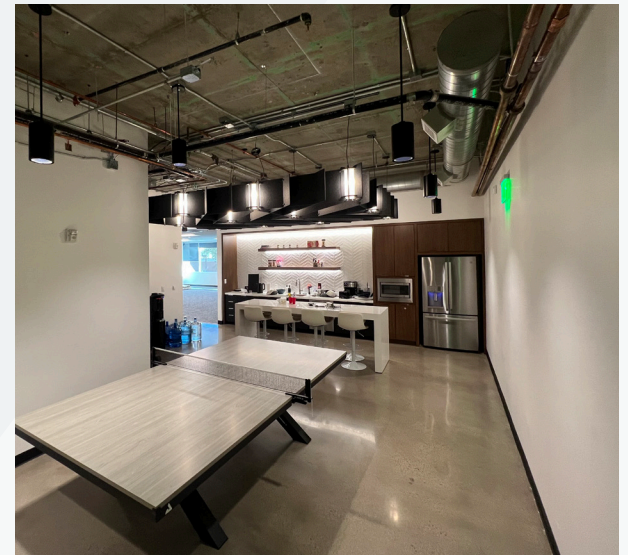
don.morrow@naihorizon.com | +1 602 393 6608

**NAI**Horizon

All information furnished regarding property for sale, rental or financing is from sources deemed reliable, but no warranty or representation is made to the accuracy thereof and same is submitted subject to errors, omissions, change of price, rental or other conditions prior to sale lease or financing or withdrawal without notice. No liability of any kind is to be imposed on the broker herein.



# Photos



25-04-086

**Dylan Whitwer**

dylan.whitwer@naihorizon.com | +1 602 393 6609

**Don Morrow**

don.morrow@naihorizon.com | +1 602 393 6608

**NAI**Horizon

All information furnished regarding property for sale, rental or financing is from sources deemed reliable, but no warranty or representation is made to the accuracy thereof and same is submitted subject to errors, omissions, change of price, rental or other conditions prior to sale lease or financing or withdrawal without notice. No liability of any kind is to be imposed on the broker herein.



# Photos



**Dylan Whitwer**

dylan.whitwer@naihonorizon.com | +1 602 393 6609

**Don Morrow**

don.morrow@naihonorizon.com | +1 602 393 6608

**NAI**Horizon

All information furnished regarding property for sale, rental or financing is from sources deemed reliable, but no warranty or representation is made to the accuracy thereof and same is submitted subject to errors, omissions, change of price, rental or other conditions prior to sale lease or financing or withdrawal without notice. No liability of any kind is to be imposed on the broker herein.



# Area Map

Conveniently located near Scottsdale Airport, TPC Golf Course, multiple luxury hotel brands, and prominent retail outfitters.



Dylan Whitwer

dylan.whitwer@naihonorizon.com | +1 602 393 6609

Don Morrow

don.morrow@naihonorizon.com | +1 602 393 6608

**NAI**Horizon

All information furnished regarding property for sale, rental or financing is from sources deemed reliable, but no warranty or representation is made to the accuracy thereof and same is submitted subject to errors, omissions, change of price, rental or other conditions prior to sale lease or financing or withdrawal without notice. No liability of any kind is to be imposed on the broker herein.