

Retail | For Lease

CBRE

The Plaza of Roanoke & Salem

Freestanding Retail with Excellent Visibility

4160 Melrose Ave NW
Roanoke, Virginia
cbre.us/richmond



The Plaza of Roanoke & Salem
4160 Melrose Ave NW | Roanoke, Virginia



8,316

Available Retail Space (SF)

.84

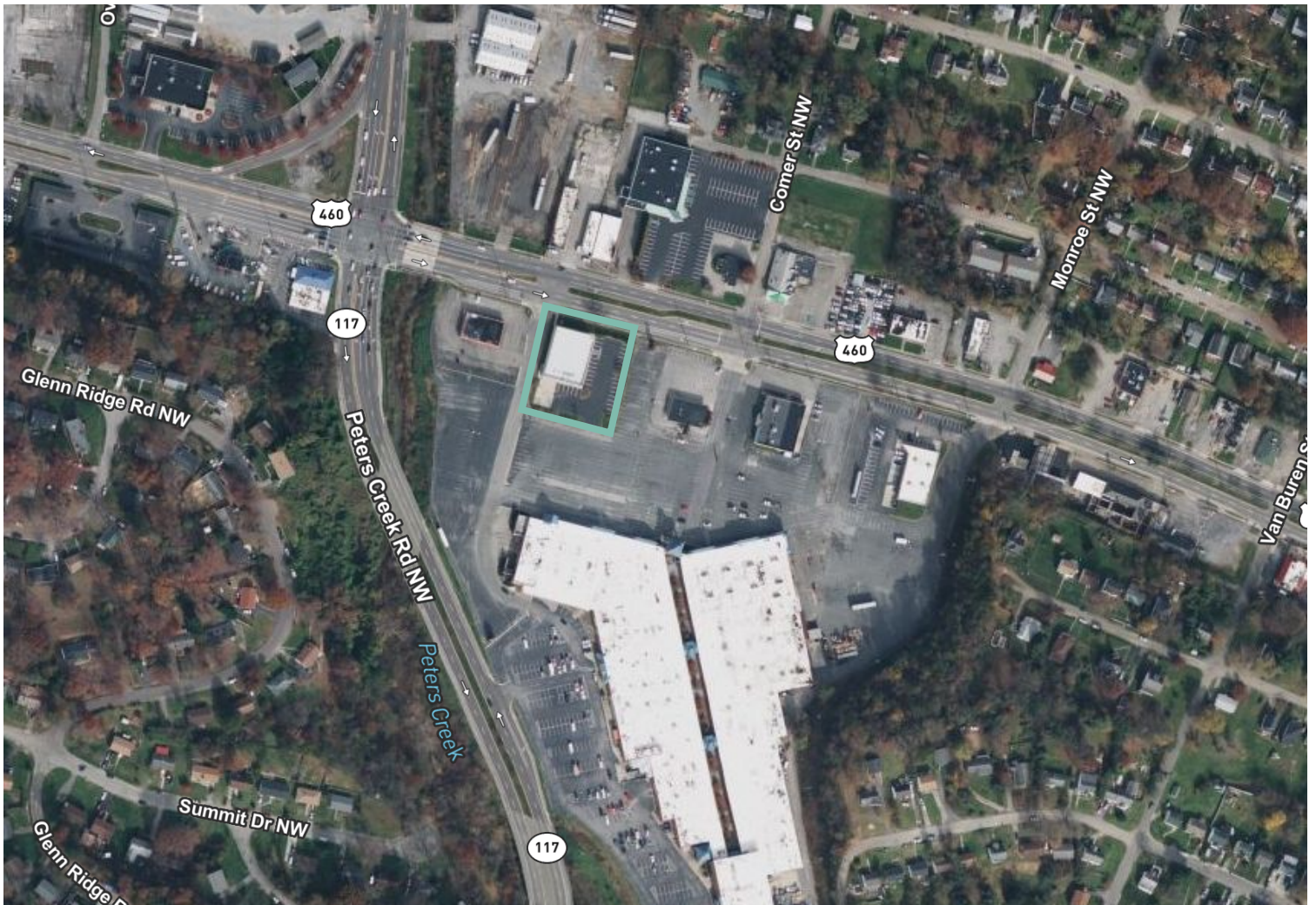
Land Area (AC)

2013

Year Built

Property Overview & Amenities

- + Excellent visibility along busy retail artery in Roanoke, Virginia
- + 8,316 SF space available situated on 0.84 acres of land
- + Former Family Dollar prototype – 120' x 70'
- + Situated just west of the intersection of Melrose Ave NW and Peters Creek Blvd
- + Situated near Roanoke Country Club and Hershberger Ave connecting to Interstate 581 and Valley View Mall
- + Commercial Zoning - General (CG)
- + 180' of frontage along Melrose Ave NW
- + Full access along Melrose Ave NW and full movement via lighted intersection through the Roanoke – Salem Business Center parking lot
- + Utilities on-site
- + 31 parking spaces
- + Call agent for pricing





Contact Us

Pam Strieffler

Vice President
+1 804 201 2026 O
+1 804 426 1162 C
pam.strieffler@cbre.com

Ian Webster

Senior Associate
+1 804 201 2014 O
+1 540 840 1992 C
ian.webster@cbre.com

© 2022 CBRE, Inc. All rights reserved. This information has been obtained from sources believed reliable, but has not been verified for accuracy or completeness. You should conduct a careful, independent investigation of the property and verify all information. Any reliance on this information is solely at your own risk. CBRE and the CBRE logo are service marks of CBRE, Inc. All other marks displayed on this document are the property of their respective owners, and the use of such logos does not imply any affiliation with or endorsement of CBRE. Photos herein are the property of their respective owners. Use of these images without the express written consent of the owner is prohibited.