



700 Franklin Street

NAPA, CA 94559

GARY VAN DAM
BROKER ASSOCIATE
CALDRE #01321102
707.342.1538
GVD100@AOL.COM

LYNSEY GRAYSON
SR. MANAGING DIRECTOR
CALDRE #02041819
707.815.1434
LGRAYSON@WREALESTATE.NET

W
COMMERCIAL



PROPERTY DESCRIPTION

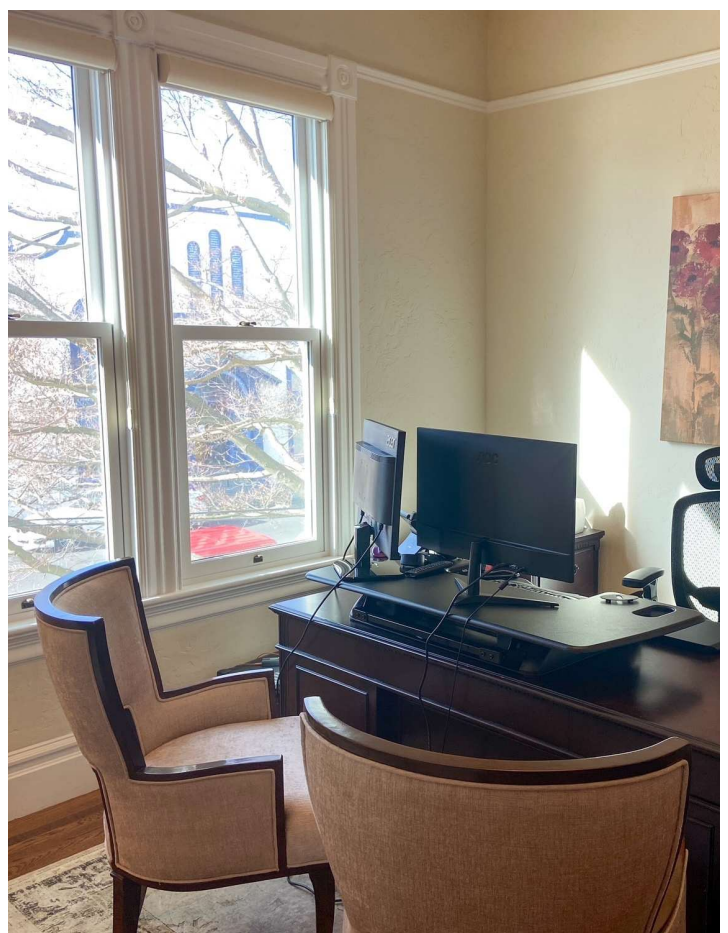
Introducing a distinguished commercial space in the heart of Napa, this prime property at 700 Franklin Street offers a sophisticated and adaptable environment ideal for modern businesses. Boasting sleek architectural design and expansive, light-filled interiors, the property embodies an innovative workspace concept. Tenants will enjoy versatile floor plans, state-of-the-art facilities, and exceptional attention to detail throughout. With convenient on-site parking, easy access to major transportation routes, and high visibility in a bustling area, this property provides an unparalleled opportunity for businesses to thrive. Elevate your operations in this prestigious and dynamic commercial setting that offers both style and substance for the discerning tenant.

Location Description

Discover the vibrant surroundings of downtown Napa, just steps away from the property. Indulge in the renowned culinary scene with world-class restaurants and wine bars showcasing the best of Napa Valley's offerings. Take a stroll along the Napa Riverfront or explore the nearby Oxbow Public Market for fresh artisanal provisions. The location provides convenient access to boutique shops, art galleries, and local amenities, making it an ideal destination for office tenants seeking a dynamic work environment with a touch of natural beauty. Embrace the unique charm and energy of downtown Napa, where the perfect blend of work and leisure awaits.

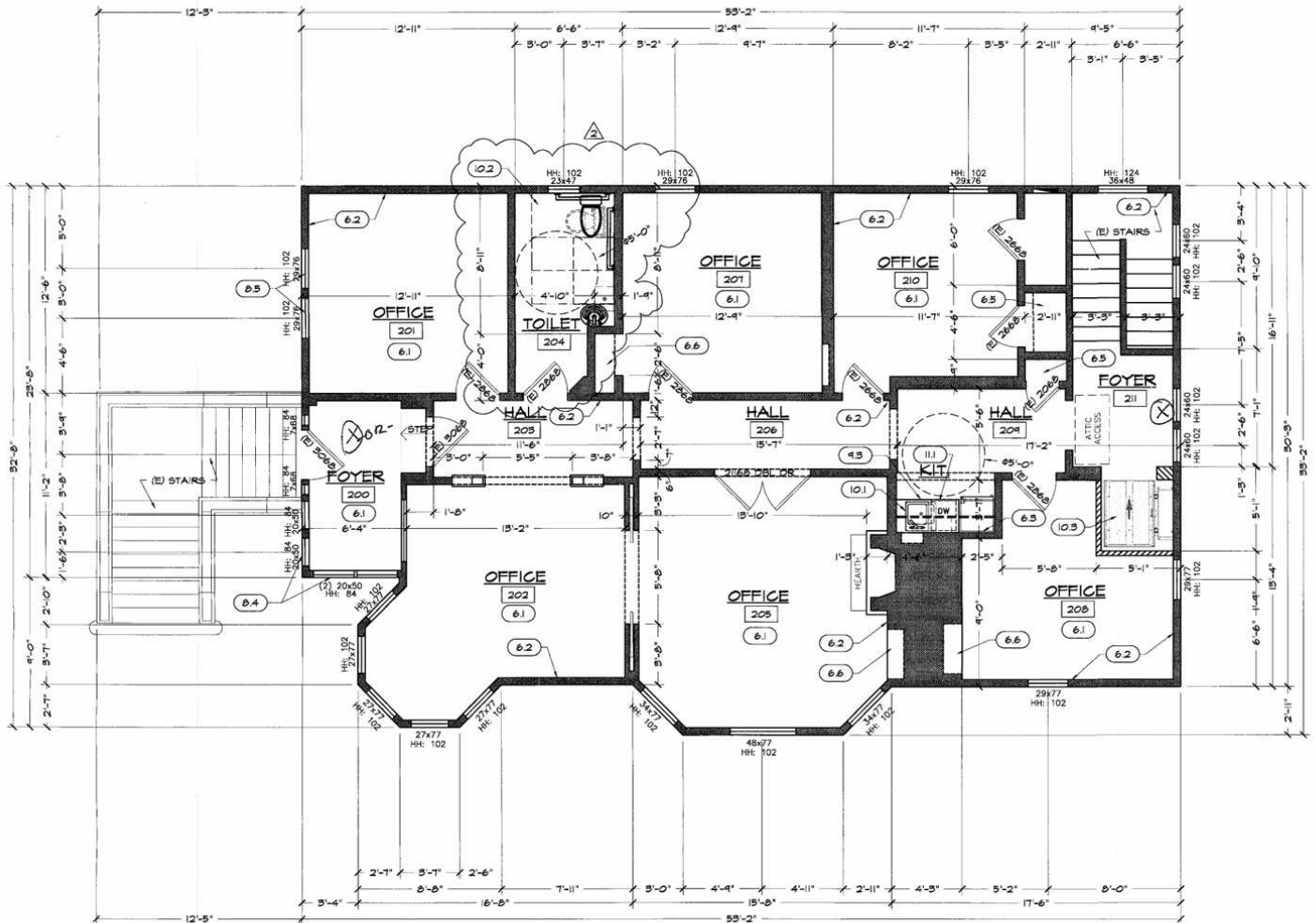
OFFERING SUMMARY

Lease Rate:	\$4,000/month (MG)
Available SF:	1,640 SF



Floor Plan

700 FRANKLIN STREET | NAPA



UPPER FLOOR PLAN

SCALE: 1/4" = 1'-0"

Location Map

700 FRANKLIN STREET | NAPA

