



**PNC**  
T O W E R  
101s5th.com

# FLOOR PLANS

For more information, contact:

**Doug Owen, SIOR**

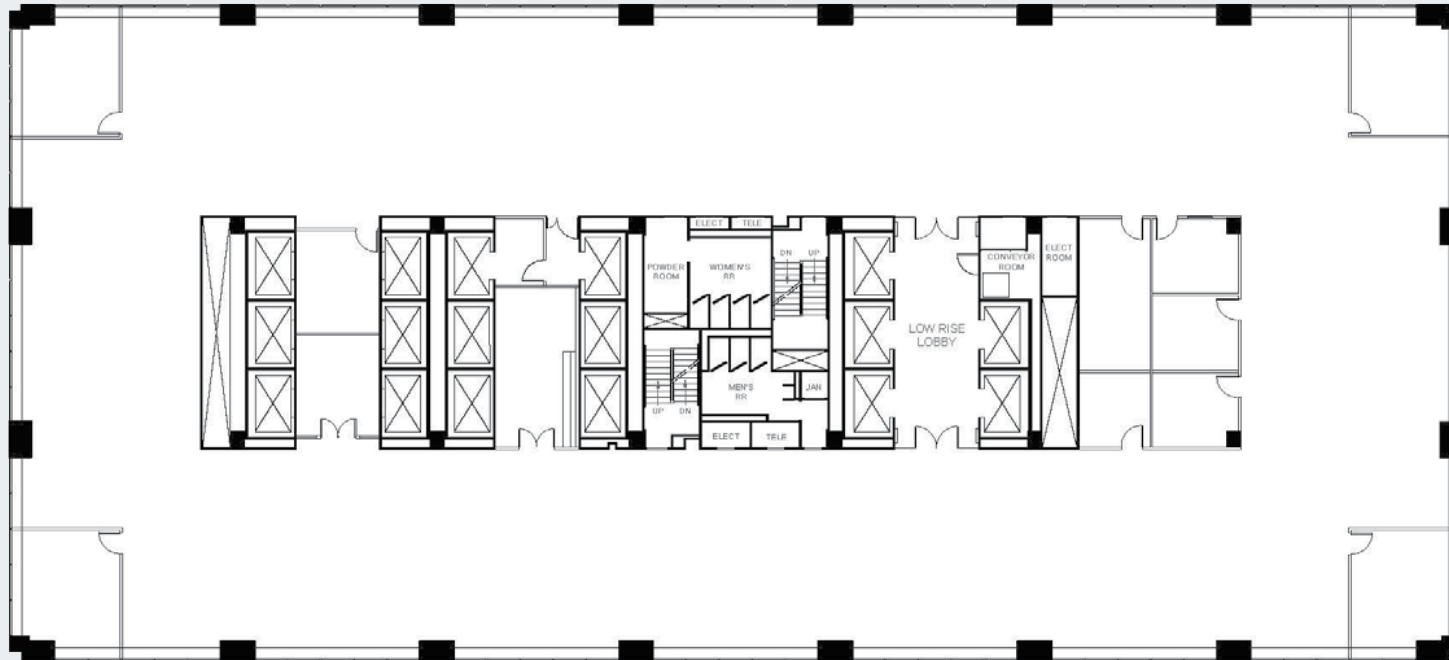
Senior Vice President  
doug.owen@jll.com  
+1 502 394 2516

**Pat Richardson, CCIM**

Vice President  
pat.richardson@jll.com  
+1 502 394 2515



[jll.com/louisville](http://jll.com/louisville)



For more information, contact:

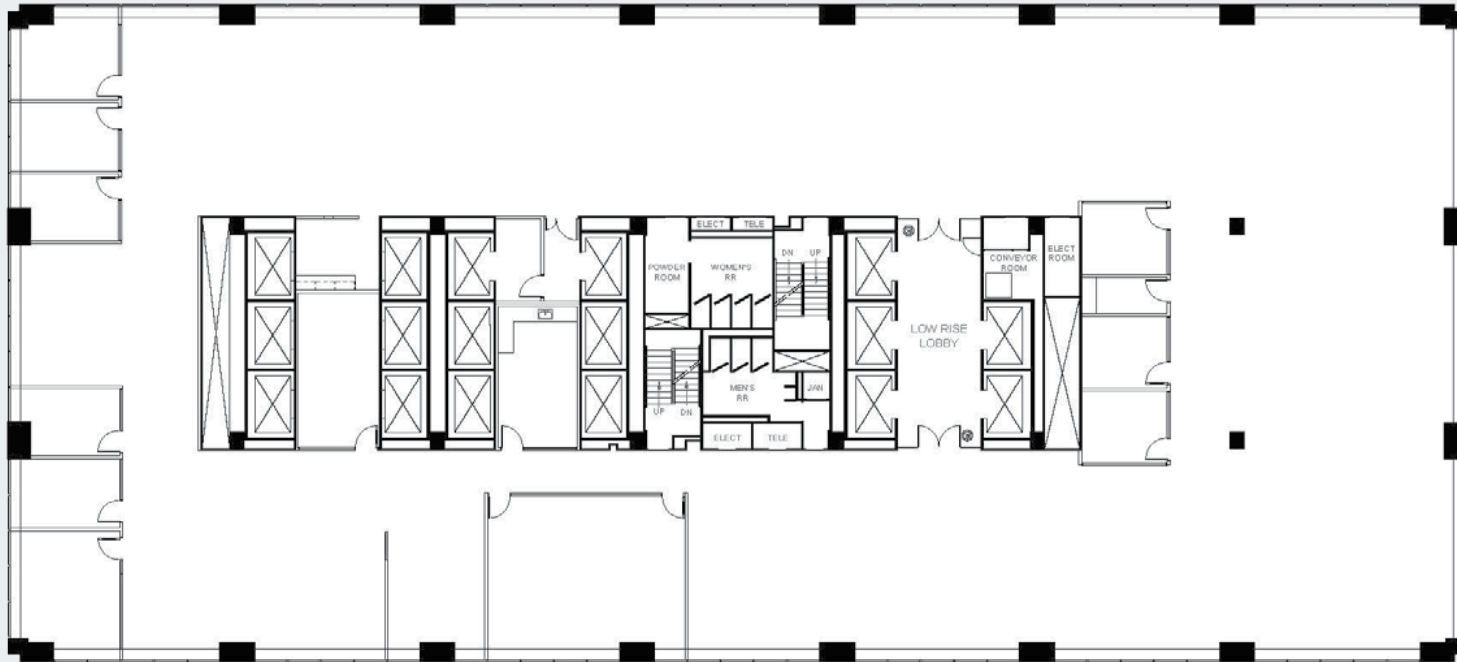
**Doug Owen, SIOR**  
Senior Vice President  
doug.owen@jll.com  
+1 502 394 2516

**Pat Richardson, CCIM**  
Vice President  
pat.richardson@jll.com  
+1 502 394 2515



# PNC TOWER

9th Floor  
16,593 SF



For more information, contact:

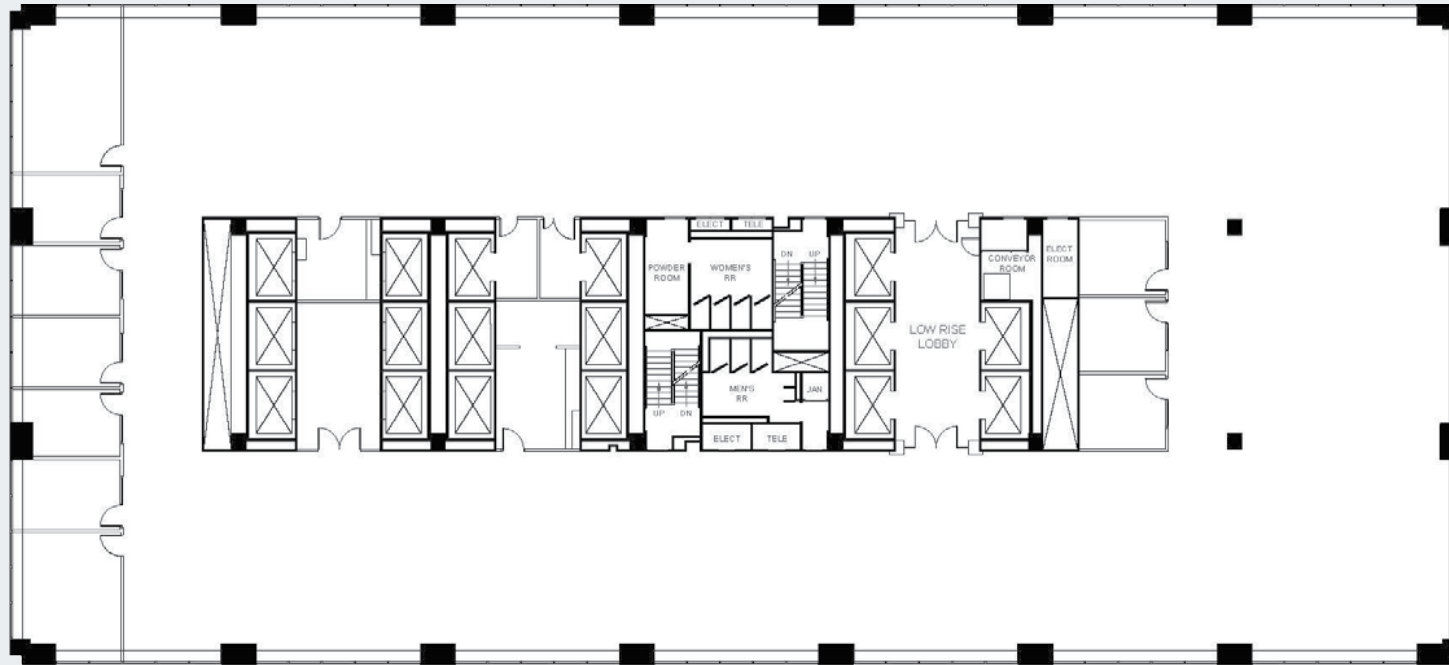
**Doug Owen, SIOR**  
Senior Vice President  
doug.owen@jll.com  
+1 502 394 2516

**Pat Richardson, CCIM**  
Vice President  
pat.richardson@jll.com  
+1 502 394 2515



# PNC TOWER

10th Floor  
16,593 SF

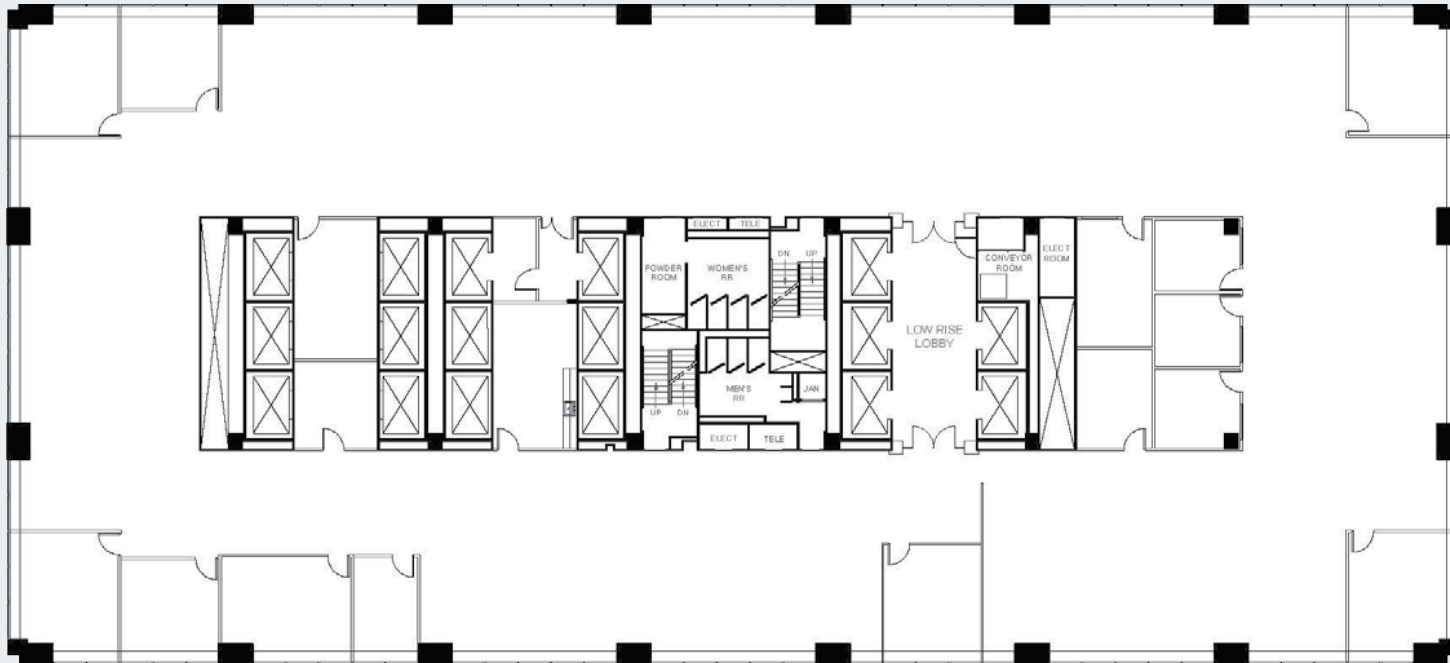


For more information, contact:

**Doug Owen, SIOR**  
Senior Vice President  
doug.owen@jll.com  
+1 502 394 2516

**Pat Richardson, CCIM**  
Vice President  
pat.richardson@jll.com  
+1 502 394 2515





For more information, contact:

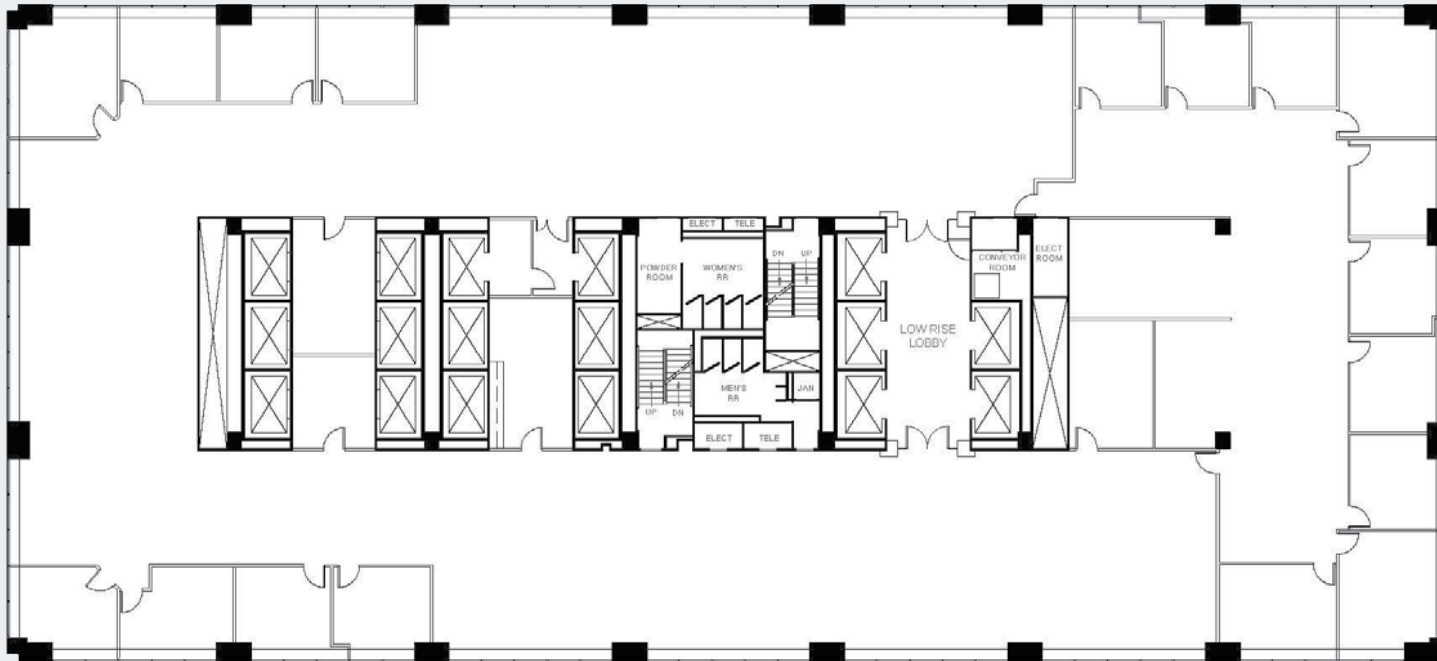
**Doug Owen, SIOR**  
Senior Vice President  
doug.owen@jll.com  
+1 502 394 2516

**Pat Richardson, CCIM**  
Vice President  
pat.richardson@jll.com  
+1 502 394 2515



# PNC TOWER

12th Floor  
16,593 SF



For more information, contact:

**Doug Owen, SIOR**  
Senior Vice President  
doug.owen@jll.com  
+1 502 394 2516

**Pat Richardson, CCIM**  
Vice President  
pat.richardson@jll.com  
+1 502 394 2515

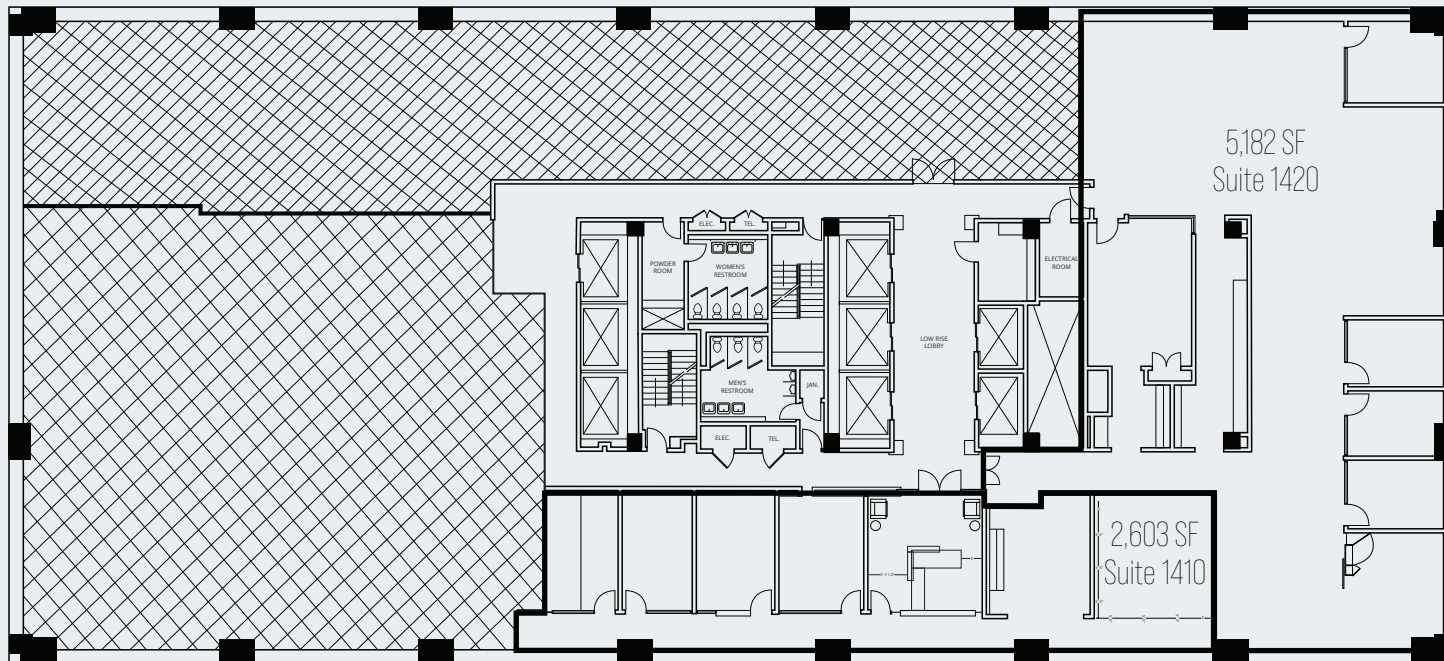


## 14th Floor

5,182 SF | Suite 1420

2,603 SF | Suite 1410

7,785 SF Contiguous



For more information, contact:

**Doug Owen, SIOR**  
Senior Vice President  
doug.owen@jll.com  
+1 502 394 2516

**Pat Richardson, CCIM**  
Vice President  
pat.richardson@jll.com  
+1 502 394 2515

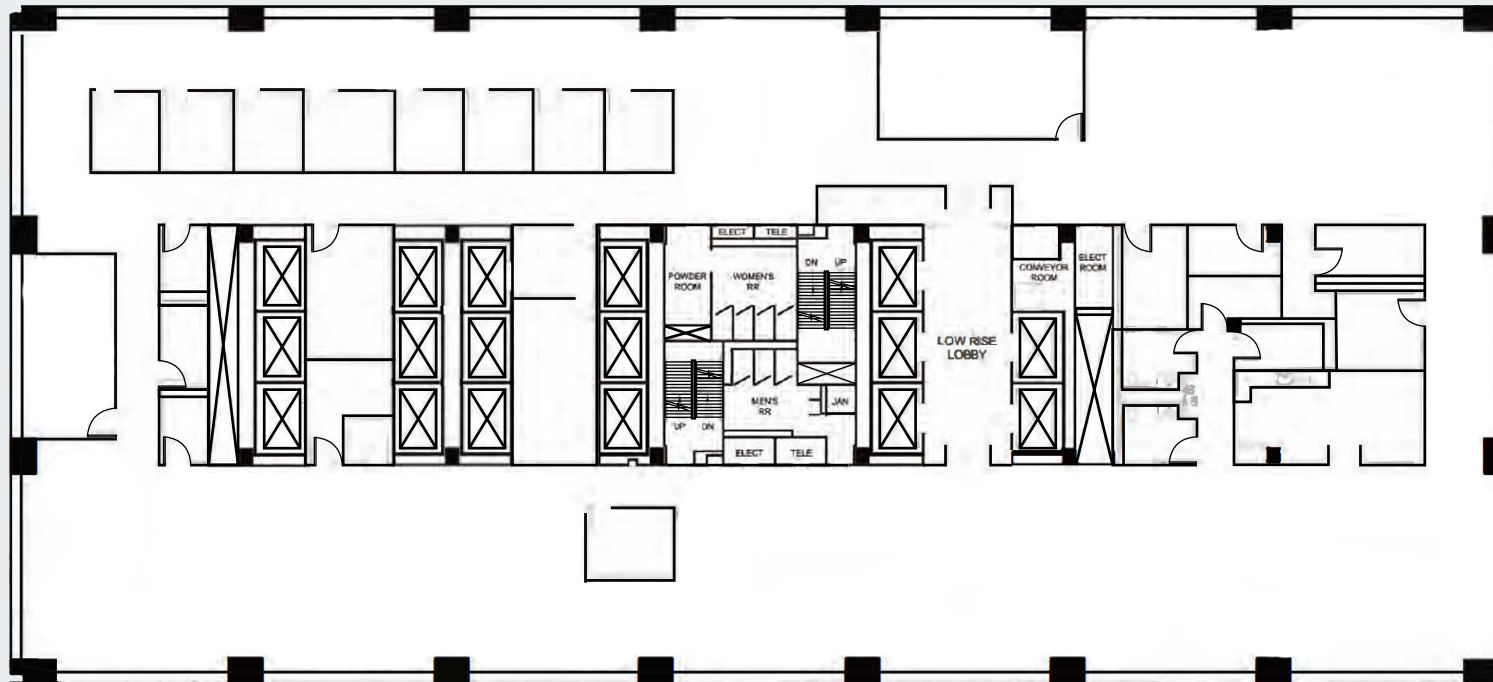


**Disclaimer**

Although information has been obtained from sources deemed reliable, neither Owner nor JLL makes any guarantees, warranties or representations, express or implied, as to the completeness or accuracy as to the information contained herein. Any projections, opinions, assumptions or estimates used are for example only. There may be differences between projected and actual results, and those differences may be material. The Property may be withdrawn without notice. Neither Owner nor JLL accepts any liability for any loss or damage suffered by any party resulting from reliance on this information. If the recipient of this information has signed a confidentiality agreement regarding this matter, this information is subject to the terms of that agreement. ©2024. Jones Lang LaSalle Brokerage, Inc. All rights reserved.

# PNC TOWER

15th Floor  
16,593 SF



For more information, contact:

**Doug Owen, SIOR**  
Senior Vice President  
doug.owen@jll.com  
+1 502 394 2516

**Pat Richardson, CCIM**  
Vice President  
pat.richardson@jll.com  
+1 502 394 2515





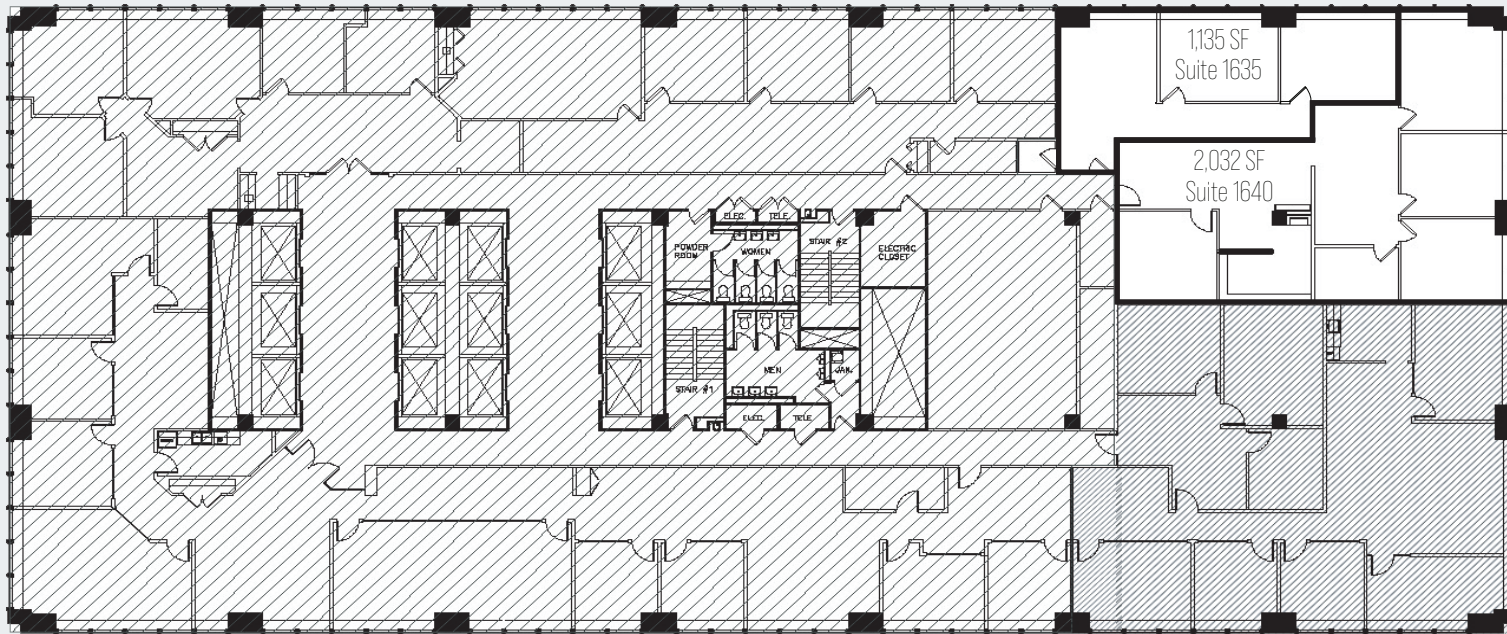
# PNC TOWER

## 16th Floor

1,135 SF | Suite 1635

2,032 SF | Suite 1640

3,222 SF Contiguous



For more information, contact:

**Doug Owen, SIOR**

Senior Vice President  
doug.owen@jll.com  
+1 502 394 2516

**Pat Richardson, CCIM**

Vice President  
pat.richardson@jll.com  
+1 502 394 2515

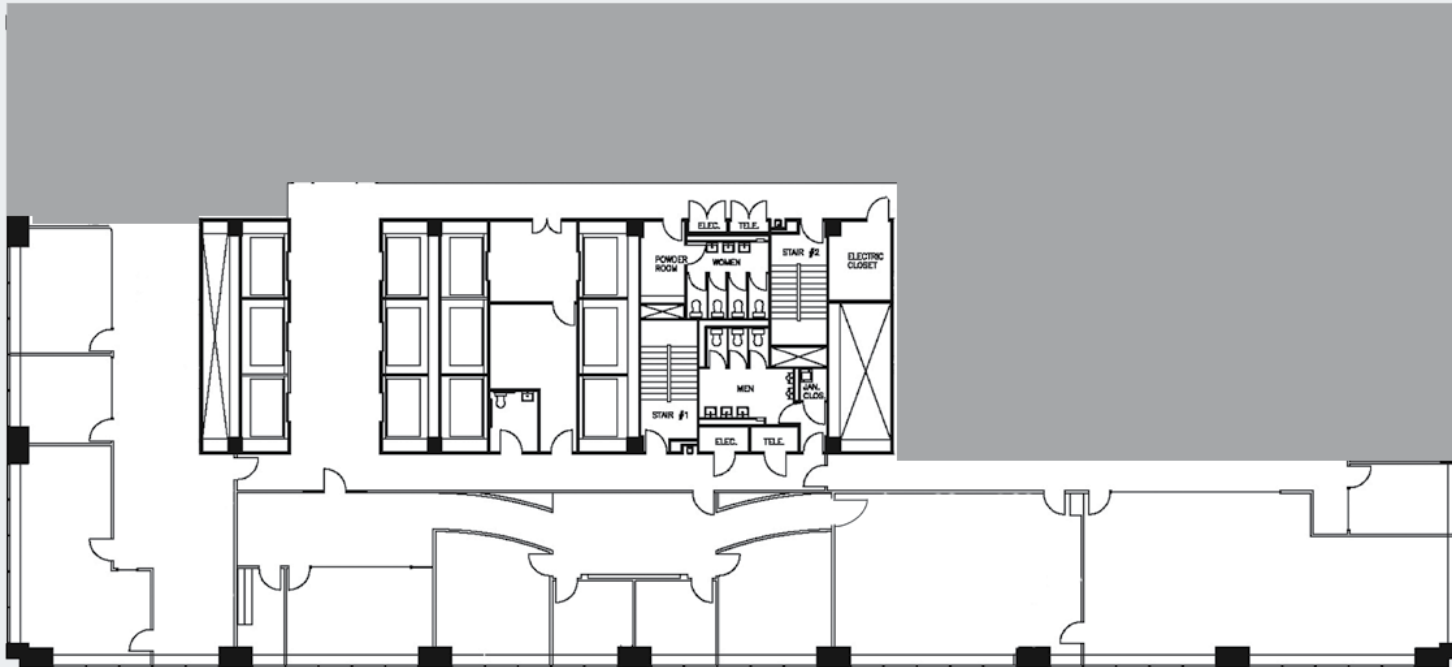


**Disclaimer**

Although information has been obtained from sources deemed reliable, neither Owner nor JLL makes any guarantees, warranties or representations, express or implied, as to the completeness or accuracy as to the information contained herein. Any projections, opinions, assumptions or estimates used are for example only. There may be differences between projected and actual results, and those differences may be material. The Property may be withdrawn without notice. Neither Owner nor JLL accepts any liability for any loss or damage suffered by any party resulting from reliance on this information. If the recipient of this information has signed a confidentiality agreement regarding this matter, this information is subject to the terms of that agreement. ©2024. Jones Lang LaSalle Brokerage, Inc. All rights reserved.

# PNC TOWER

18th Floor  
7,376 SF

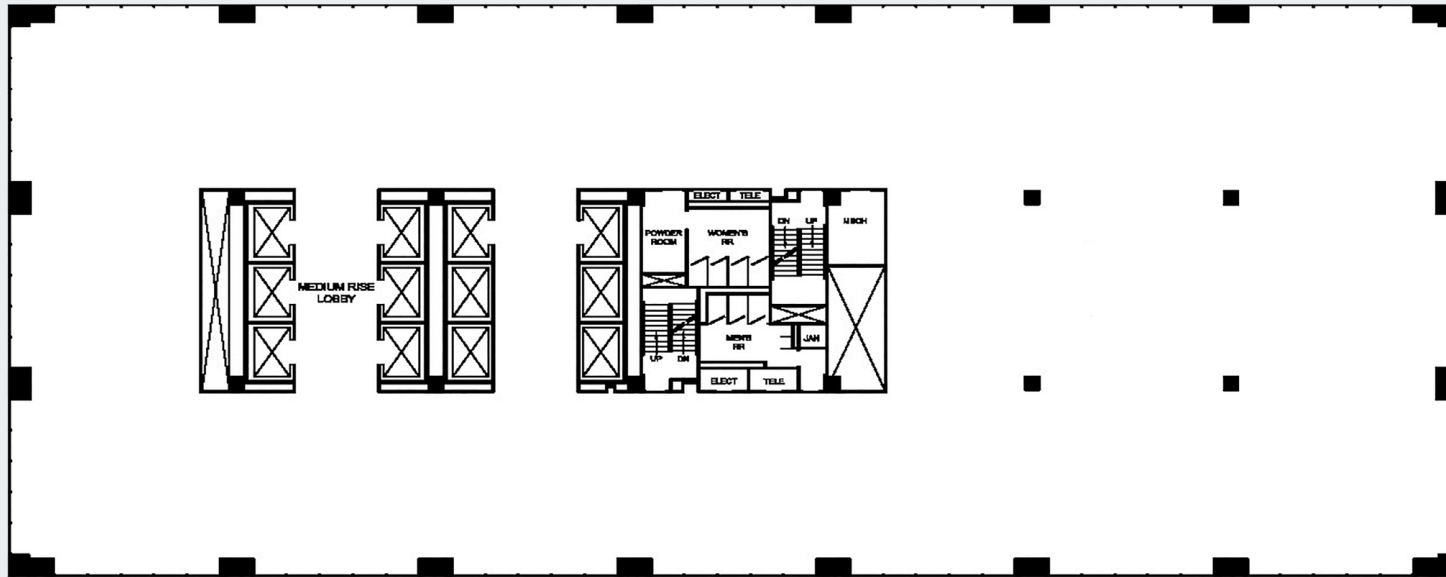


For more information, contact:

**Doug Owen, SIOR**  
Senior Vice President  
doug.owen@jll.com  
+1 502 394 2516

**Pat Richardson, CCIM**  
Vice President  
pat.richardson@jll.com  
+1 502 394 2515





For more information, contact:

**Doug Owen, SIOR**  
Senior Vice President  
doug.owen@jll.com  
+1 502 394 2516

**Pat Richardson, CCIM**  
Vice President  
pat.richardson@jll.com  
+1 502 394 2515



**Disclaimer**

Although information has been obtained from sources deemed reliable, neither Owner nor JLL makes any guarantees, warranties or representations, express or implied, as to the completeness or accuracy as to the information contained herein. Any projections, opinions, assumptions or estimates used are for example only. There may be differences between projected and actual results, and those differences may be material. The Property may be withdrawn without notice. Neither Owner nor JLL accepts any liability for any loss or damage suffered by any party resulting from reliance on this information. If the recipient of this information has signed a confidentiality agreement regarding this matter, this information is subject to the terms of that agreement. ©2024. Jones Lang LaSalle Brokerage, Inc. All rights reserved.



### For more information, contact:

**Doug Owen, SIOR**  
Senior Vice President  
doug.owen@jll.com  
+1 502 394 2516

**Pat Richardson, CCIM**  
Vice President  
pat.richardson@jll.com  
+1 502 394 2515

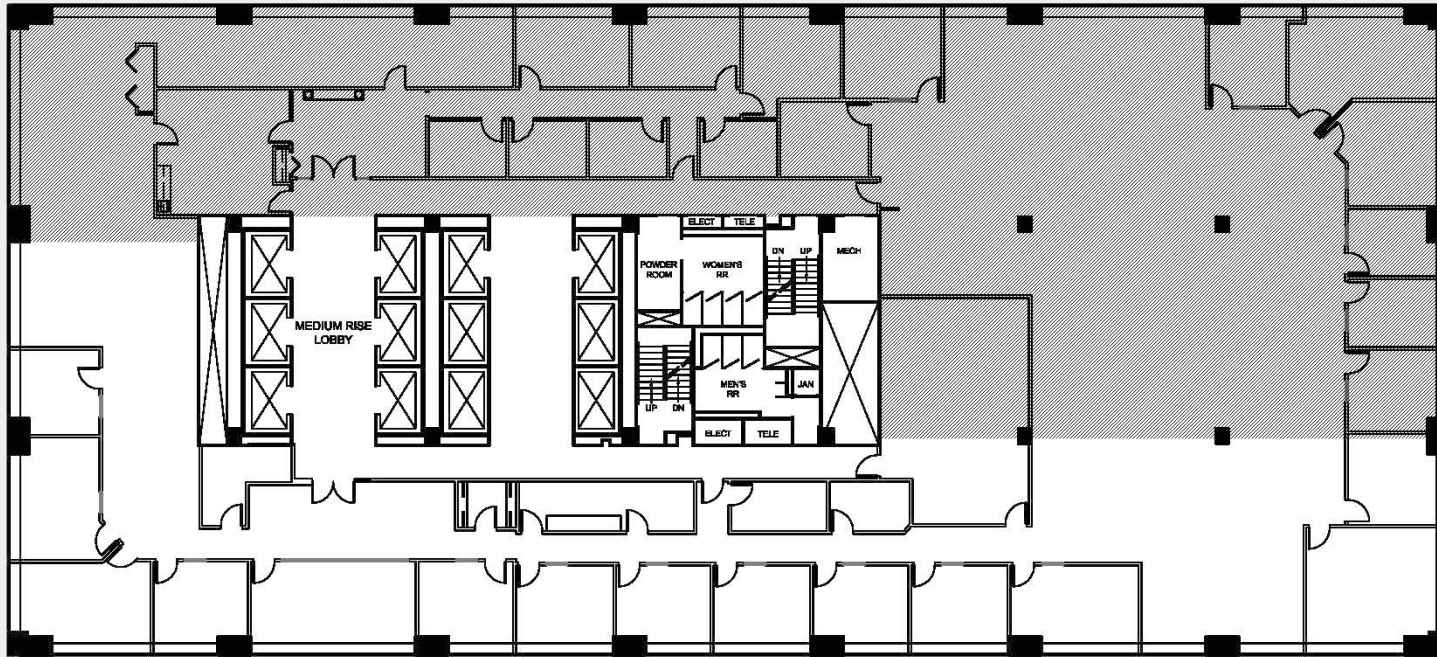


#### Disclaimer

Although information has been obtained from sources deemed reliable, neither Owner nor JLL makes any guarantees, warranties or representations, express or implied, as to the completeness or accuracy as to the information contained herein. Any projections, opinions, assumptions or estimates used are for example only. There may be differences between projected and actual results, and those differences may be material. The Property may be withdrawn without notice. Neither Owner nor JLL accepts any liability for any loss or damage suffered by any party resulting from reliance on this information. If the recipient of this information has signed a confidentiality agreement regarding this matter, this information is subject to the terms of that agreement. ©2024. Jones Lang LaSalle Brokerage, Inc. All rights reserved.

# PNC TOWER

28th Floor  
up to 7,882 SF



For more information, contact:

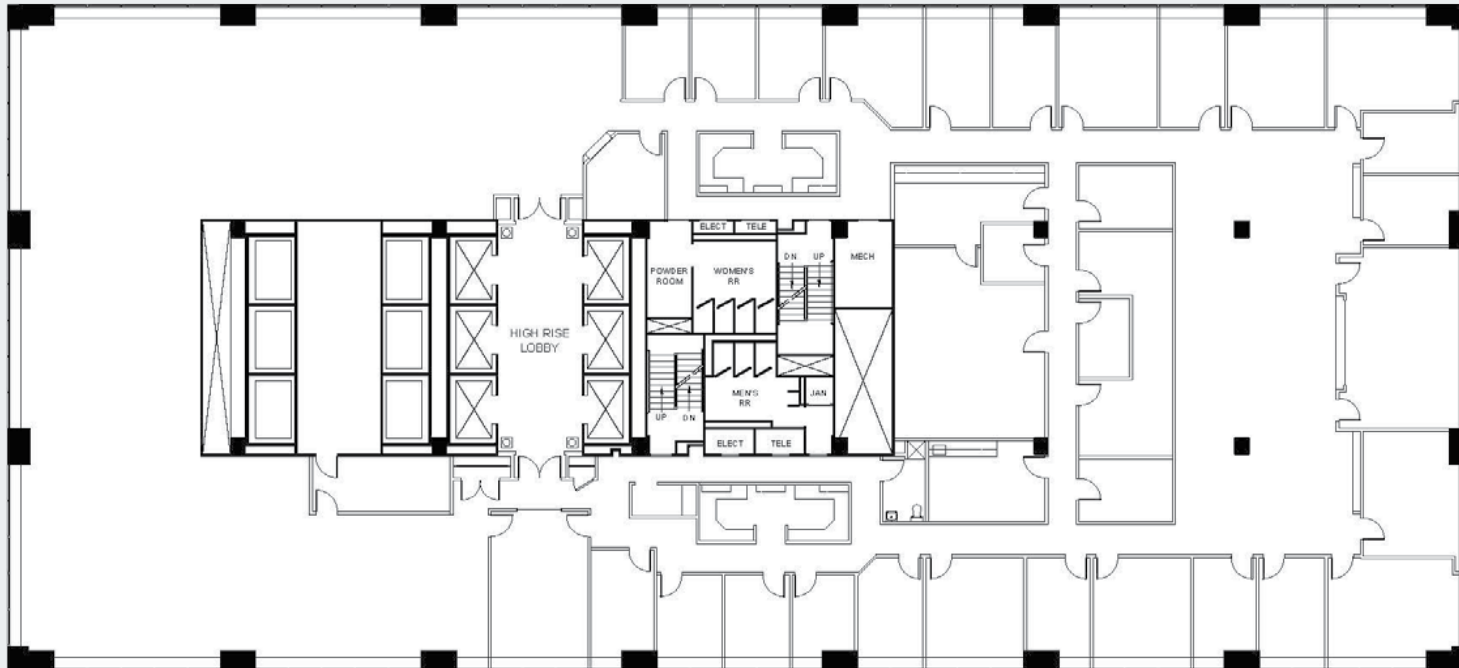
**Doug Owen, SIOR**  
Senior Vice President  
doug.owen@jll.com  
+1 502 394 2516

**Pat Richardson, CCIM**  
Vice President  
pat.richardson@jll.com  
+1 502 394 2515



**Disclaimer**

Although information has been obtained from sources deemed reliable, neither Owner nor JLL makes any guarantees, warranties or representations, express or implied, as to the completeness or accuracy as to the information contained herein. Any projections, opinions, assumptions or estimates used are for example only. There may be differences between projected and actual results, and those differences may be material. The Property may be withdrawn without notice. Neither Owner nor JLL accepts any liability for any loss or damage suffered by any party resulting from reliance on this information. If the recipient of this information has signed a confidentiality agreement regarding this matter, this information is subject to the terms of that agreement. ©2024. Jones Lang LaSalle Brokerage, Inc. All rights reserved.

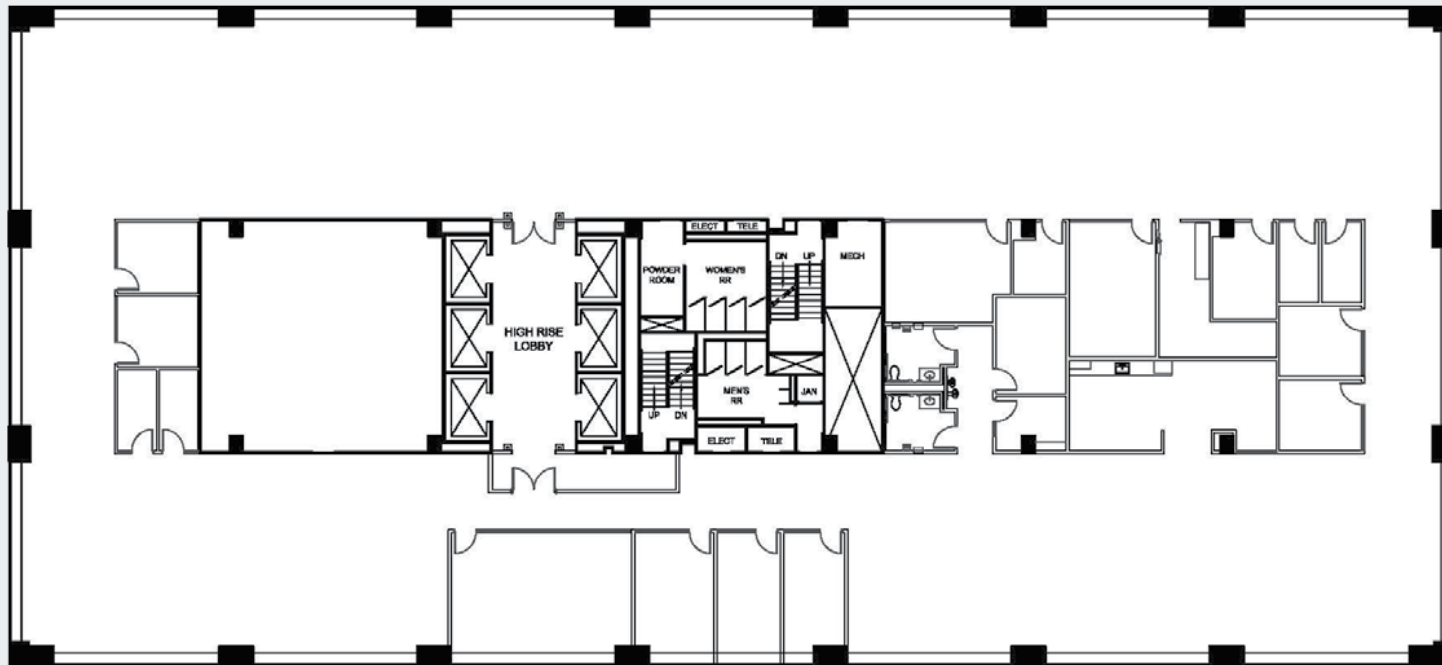


For more information, contact:

**Doug Owen, SIOR**  
Senior Vice President  
doug.owen@jll.com  
+1 502 394 2516

**Pat Richardson, CCIM**  
Vice President  
pat.richardson@jll.com  
+1 502 394 2515





For more information, contact:

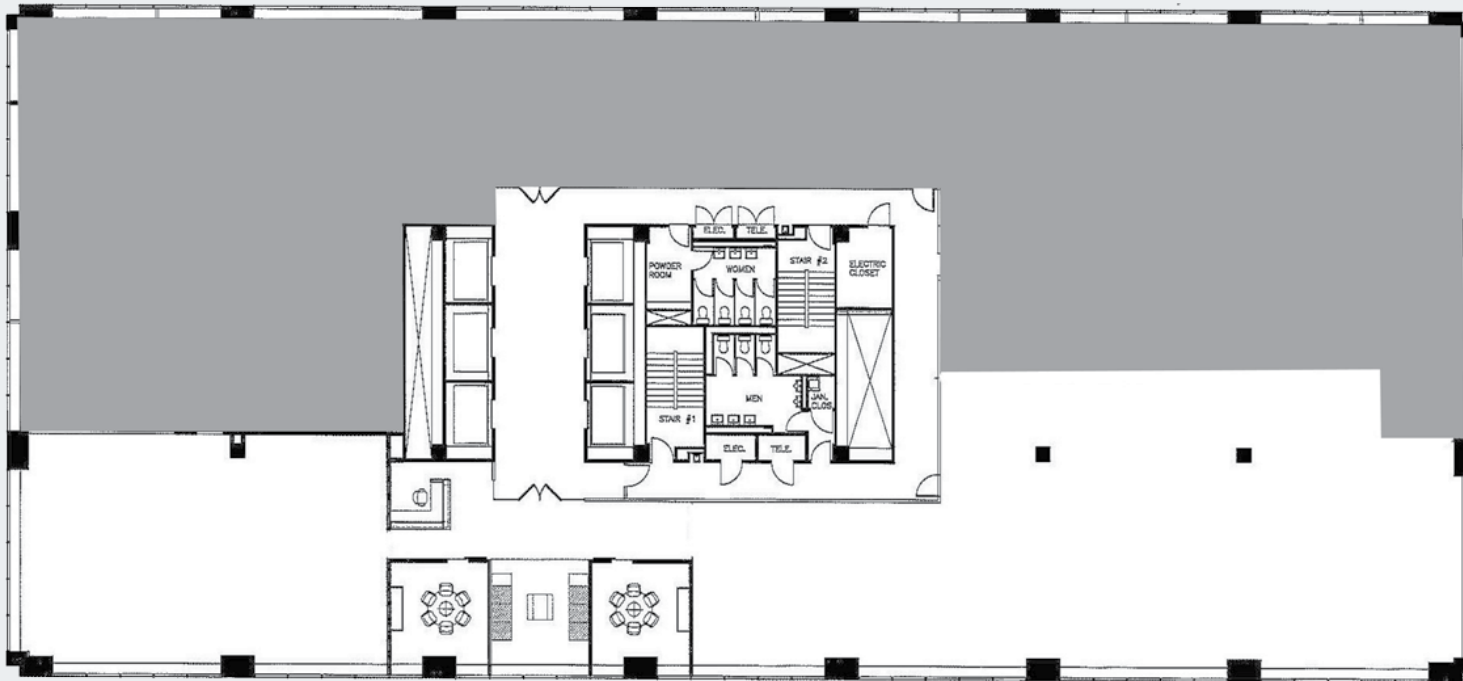
**Doug Owen, SIOR**  
Senior Vice President  
doug.owen@jll.com  
+1 502 394 2516

**Pat Richardson, CCIM**  
Vice President  
pat.richardson@jll.com  
+1 502 394 2515



# PNC TOWER

36th Floor  
7,996 SF



For more information, contact:

**Doug Owen, SIOR**  
Senior Vice President  
doug.owen@jll.com  
+1 502 394 2516

**Pat Richardson, CCIM**  
Vice President  
pat.richardson@jll.com  
+1 502 394 2515







For more information, contact:

**Doug Owen, SIOR**  
Senior Vice President  
doug.owen@jll.com  
+1 502 394 2516

**Pat Richardson, CCIM**  
Vice President  
pat.richardson@jll.com  
+1 502 394 2515



**Disclaimer**

Although information has been obtained from sources deemed reliable, neither Owner nor JLL makes any guarantees, warranties or representations, express or implied, as to the completeness or accuracy as to the information contained herein. Any projections, opinions, assumptions or estimates used are for example only. There may be differences between projected and actual results, and those differences may be material. The Property may be withdrawn without notice. Neither Owner nor JLL accepts any liability for any loss or damage suffered by any party resulting from reliance on this information. If the recipient of this information has signed a confidentiality agreement regarding this matter, this information is subject to the terms of that agreement. ©2024. Jones Lang LaSalle Brokerage, Inc. All rights reserved.