

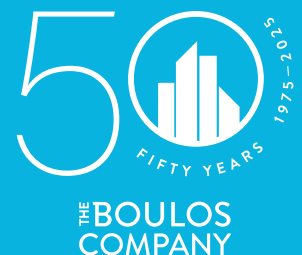
# FOR LEASE | OFFICE SPACE



**7 WEBHANNET PLACE  
KENNEBUNK, ME 04043**

## PROPERTY HIGHLIGHTS

- Professional office suites available
- Ideal, high traffic Route One location steps from downtown Kennebunk
- Ample on-site parking
- Other tenants include: State Farm Insurance, Cottage Advisors and Starboard Dental.
- Lease Rate: \$15.00/SF NNN



# FOR LEASE | OFFICE SPACE

7 WEBHANNET PLACE, KENNEBUNK, ME 04043



## PROPERTY DETAILS

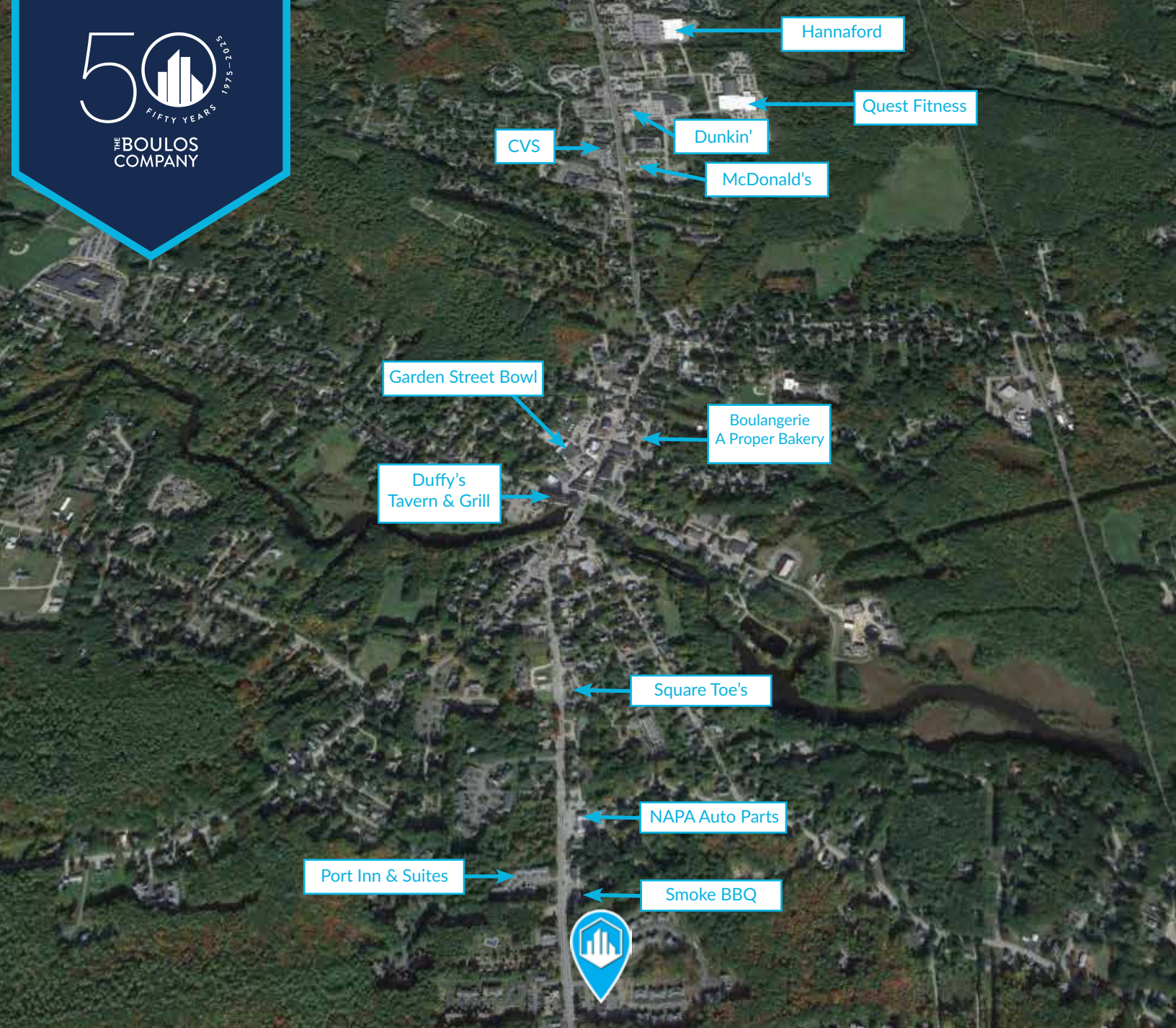
OWNER	Joy Real Estate of Scarborough
BUILDING SIZE	4,380± SF
AVAILABLE SPACE	<b>Suite 2:</b> 1,602± SF
ASSESSOR'S REF	Map 059, Block 033, Lot 05 Map 059, Block 033, Lot 06
BOOK/PAGE	13801/204
NO. OF STORIES	Two (2)
YEAR BUILT	1987
LOT SIZE	1.62± AC
ZONING	MRCU - York St. Mixed Res. & Comm. Use
INTERIOR	<b>Suite 2:</b> Waiting room, four (4) dental stations, private offices and storage rooms
UTILITIES	Municipal water and sewer
PARKING	Ample, on-site in common.
DATE AVAILABLE	Immediately
LEASE RATE	\$15.00/SF NNN
EST. NNN EXPENSES	\$4.81/SF (includes taxes)



7 WEBHANNET PLACE, KENNEBUNK, ME 04043







## CONTACT US



**CHRIS GALLAGHER**  
Broker

+1 207.553.1728 D  
+1 917.673.1178 C  
[cgallagher@boulos.com](mailto:cgallagher@boulos.com)



**NATE ROOP**  
Associate

+1 207.553.1737 D  
+1 207.756.3002 C  
[nroop@boulos.com](mailto:nroop@boulos.com)

©2025 The Boulos Company, Inc. All rights reserved. This information has been obtained from sources believed reliable, but has not been verified for accuracy or completeness. You should conduct a careful, independent investigation of the property and verify all information. Any reliance on this information is solely at your own risk. The Boulos Company and The Boulos Company logo are service marks of The Boulos Company, Inc. All other marks displayed on this document are the property of their respective owners. Photos herein are the property of their respective owners. Use of these images without the express written consent of the owner is prohibited.