

JAMESON.

# FOR LEASE

## OFFICE/MEDICAL

---

5015 North Paulina Street  
Chicago, IL 60640

\$20.00 SF/yr

---

Mark Kishtow  
Senior VP, Investment Sales  
312.867.2265  
mkishtow@jameson.com

Brent Burden, CCIM  
Senior Vice President  
847.826.7271  
bburden@jameson.com

JAMESONCOMMERCIAL.COM

©Jameson Real Estate LLC. All information provided herein is from sources deemed reliable. No representation is made as to the accuracy thereof & it is submitted subject to errors, omissions, changes, prior sale or lease, or withdrawal without notice. Projections, opinions, assumptions & estimates are presented as examples only & may not represent actual performance. Consult tax & legal advisors to perform your own investigation.

---



# JAMESON.



## LEASE OVERVIEW

LEASE PRICE: \$20.00 SF/yr  
SUITE SIZES: 425- 1,768 SF  
BUILDING SIZE: 86,665 SF  
TENANCY: Multi-Tenant-  
SUBMARKET: Ravenswood  
MARKET: Chicago  
CROSS STREETS: Paulina /Winnemac

---

## AREA TENANTS

- Mariano's
  - Jersey Mike's
  - Bar Roma Italian Restaurant
  - Ace Hardware
  - Orange Theory Fitness
  - The Bongo Room Lounge
- 

## PROPERTY DESCRIPTION

Thorek Memorial Hospital  
Medical Office Suites FOR LEASE  
Office Suites also available for Non-Medical uses.

---

## PROPERTY HIGHLIGHTS

- Medical ready suites available from 425-1,768 SF
  - Existing medical office conditions
  - Gross leases
  - Utilities and wifi included in rent.
  - Thorek Hospital Andersonville Pavillion
  - Onsite surface parking
- 

## AREA AND TRANSPORTATION HIGHLIGHTS

- 2 blocks from Ravenswood METRA station,
  - 5 blocks from DAMEN CTA Brown line station.
  - 2 blocks from Lawrence Avenue CTA bus line.
  - 2 blocks from Clark Street CTA bus line.
-

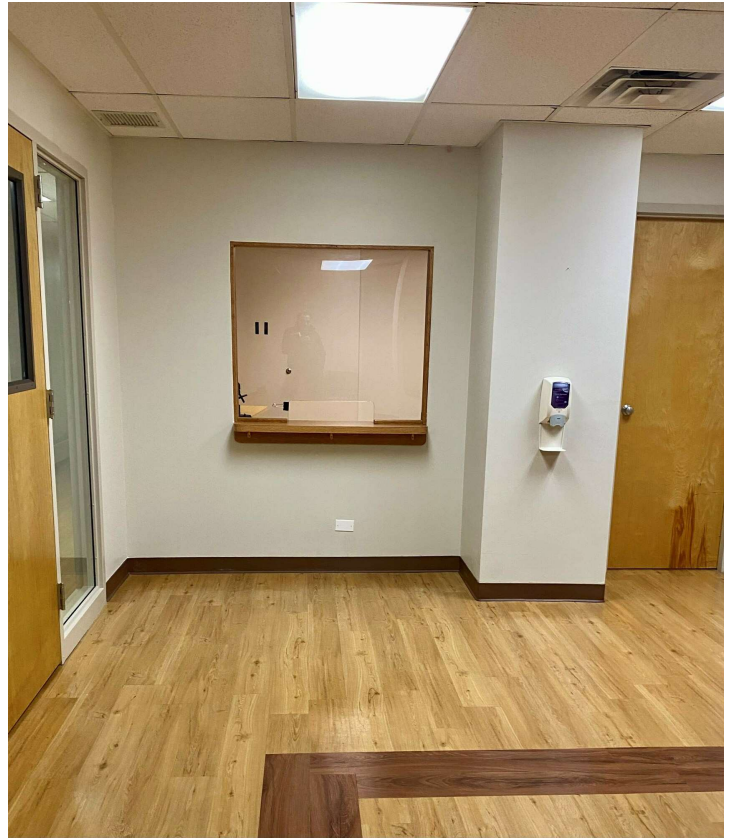


JAMESON.

## INTERIOR PHOTOS

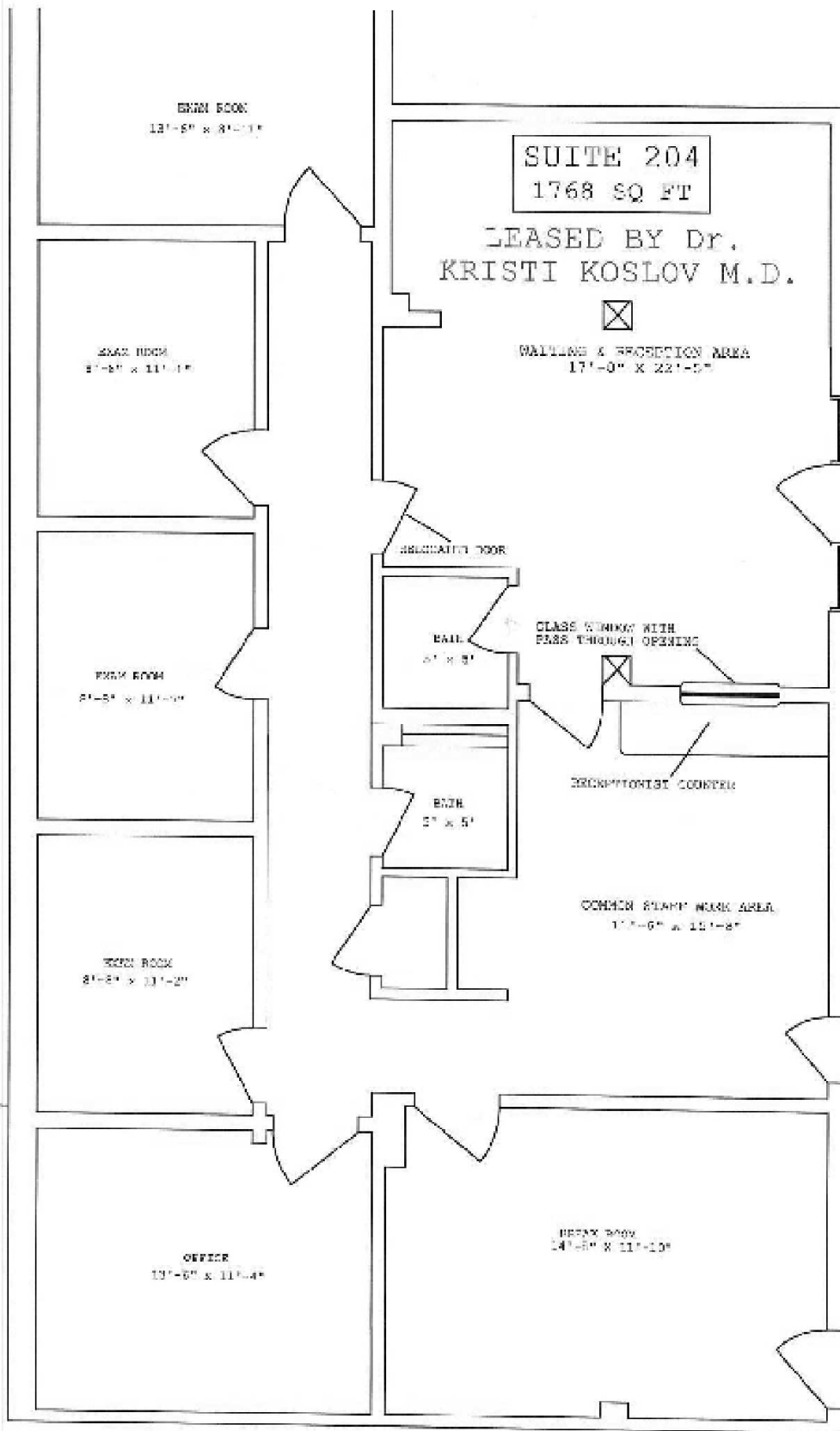
5015 North Paulina Street, Chicago, IL 60640

\$20.00 SF/yr



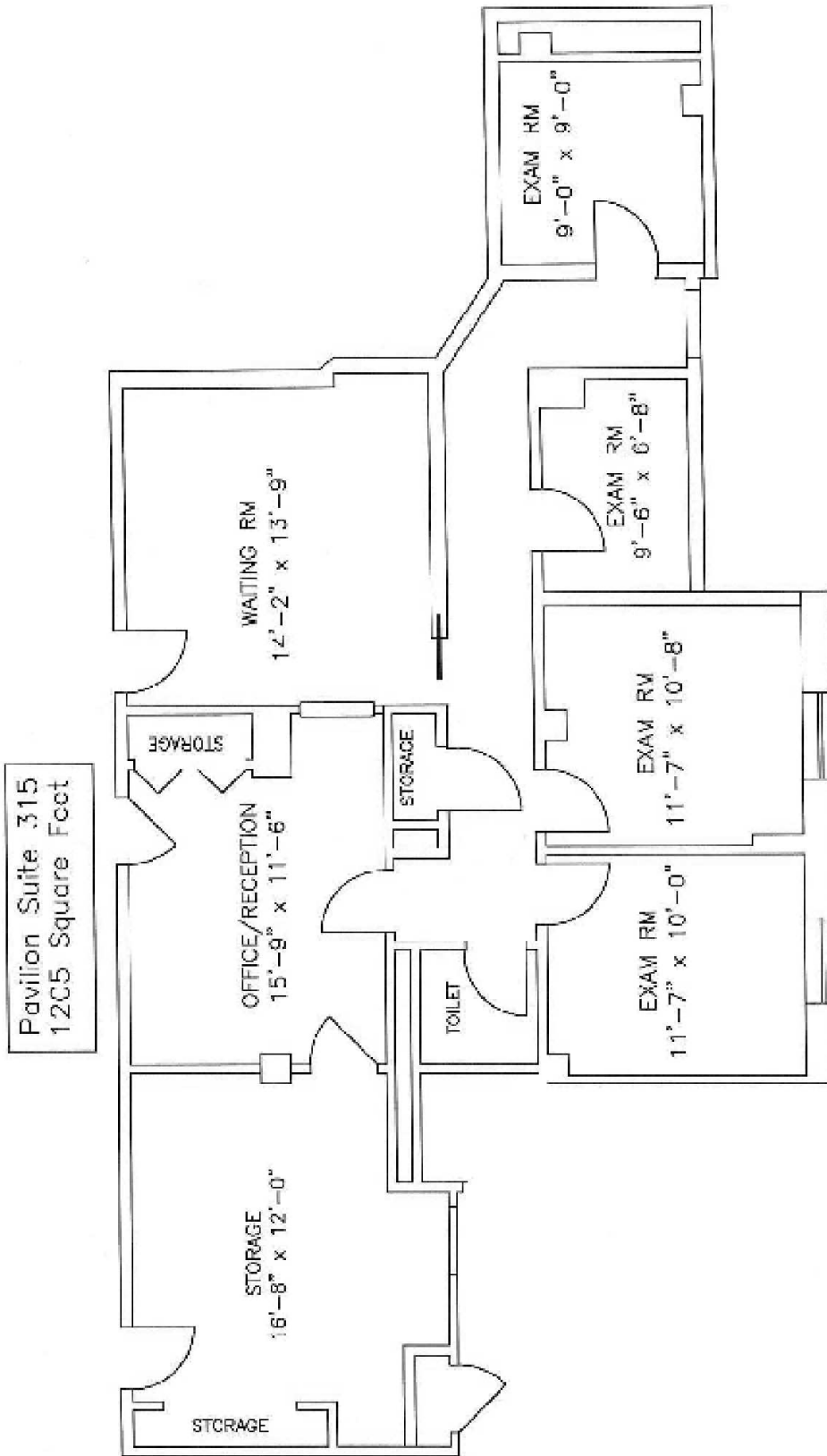
SUITE 204: 1,768 SF, \$2,950/MONTH

5015 North Paulina Street, Chicago, IL 60640



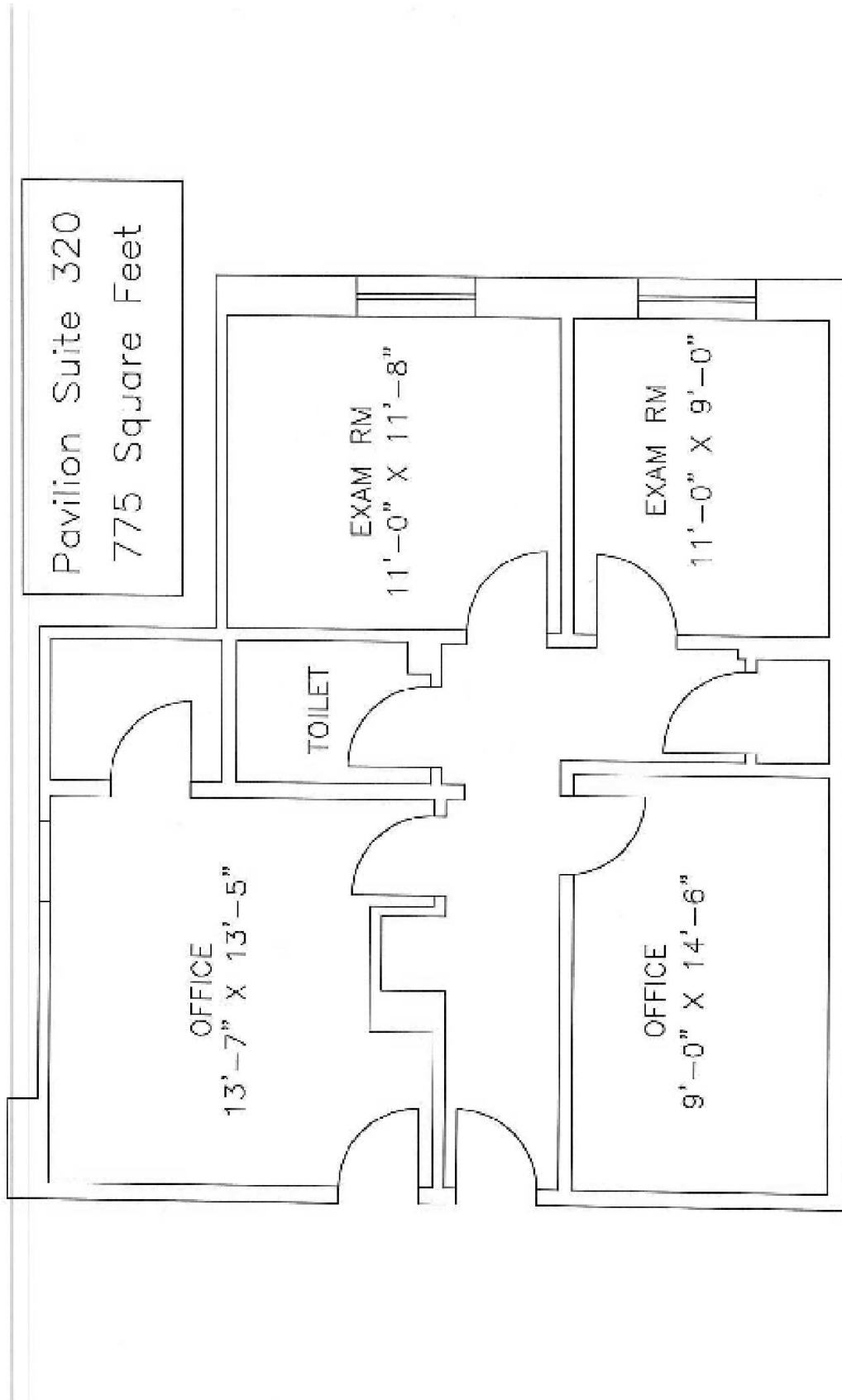
SUITE 315: 1,205 RSF, \$2,008/MONTH

5015 North Paulina Street, Chicago, IL 60640



SUITE 320: 775 SF, \$1,292/MONTH

5015 North Paulina Street, Chicago, IL 60640

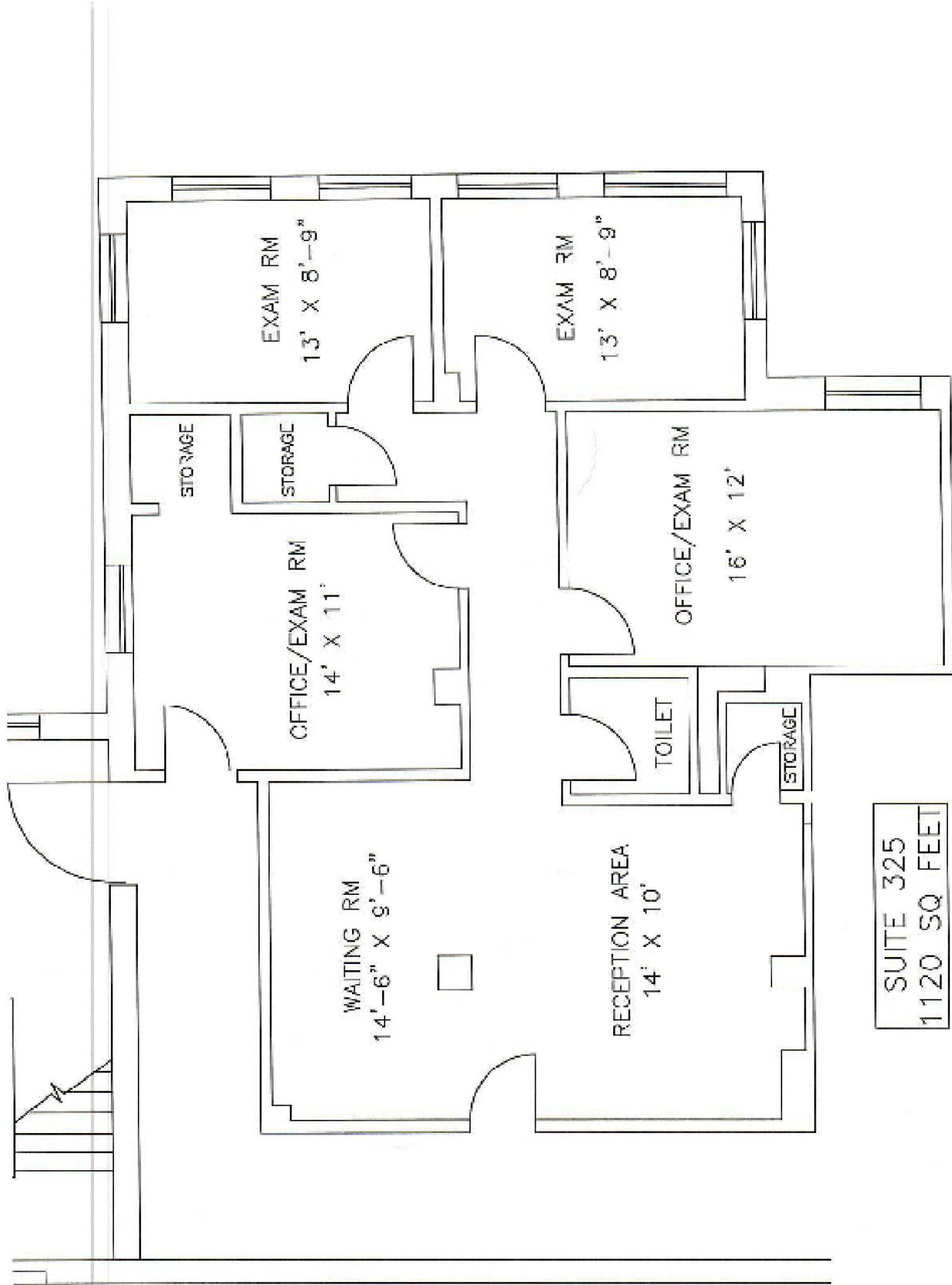




JAMESON.

SUITE 325: 1,120 SF, \$1,867/MONTH

5015 North Paulina Street, Chicago, IL 60640

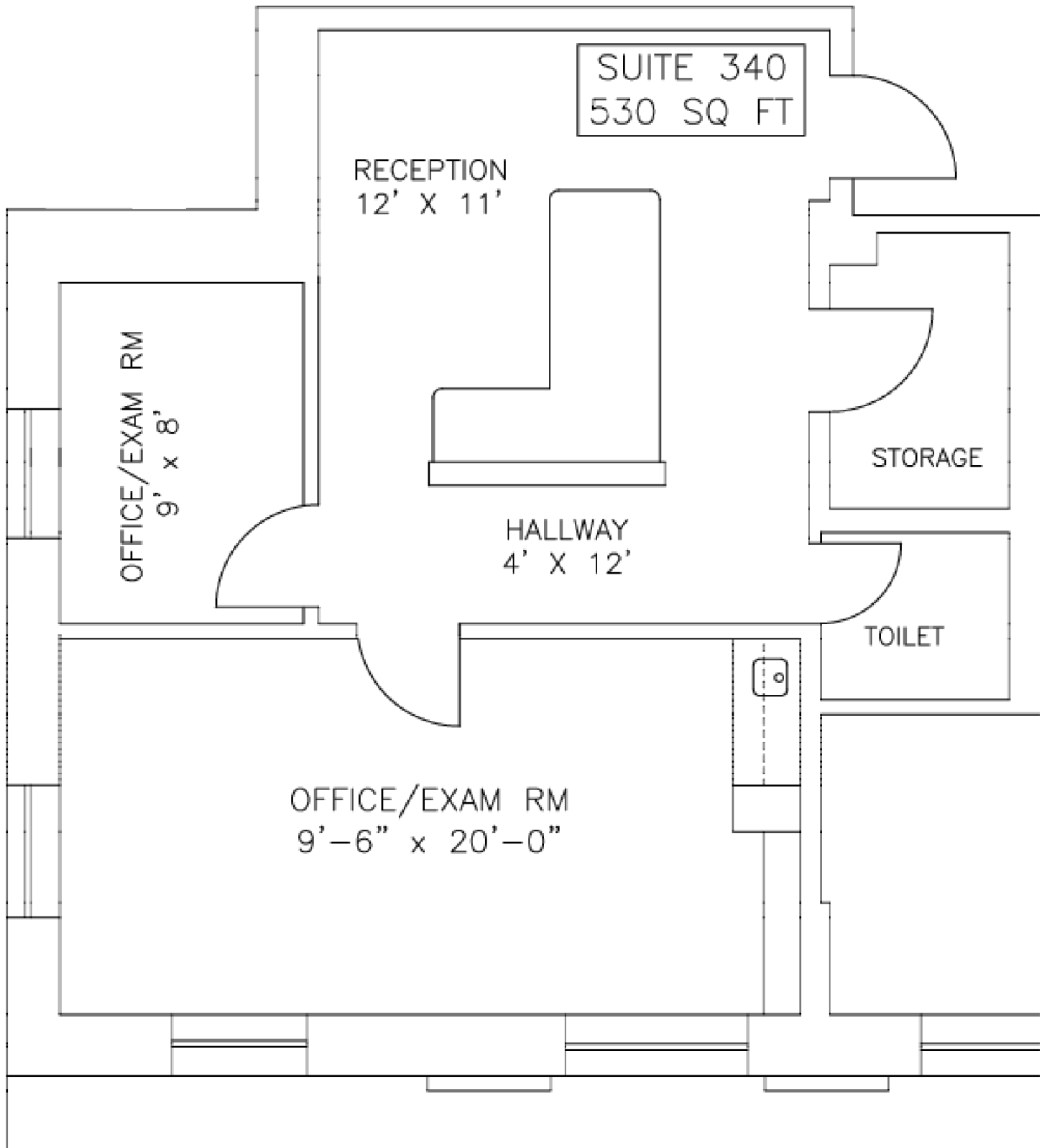


JAMESON.

SUITE 340: 530 RSF, \$883/MONTH

5015 North Paulina Street, Chicago, IL 60640

\$22.00 SF/yr

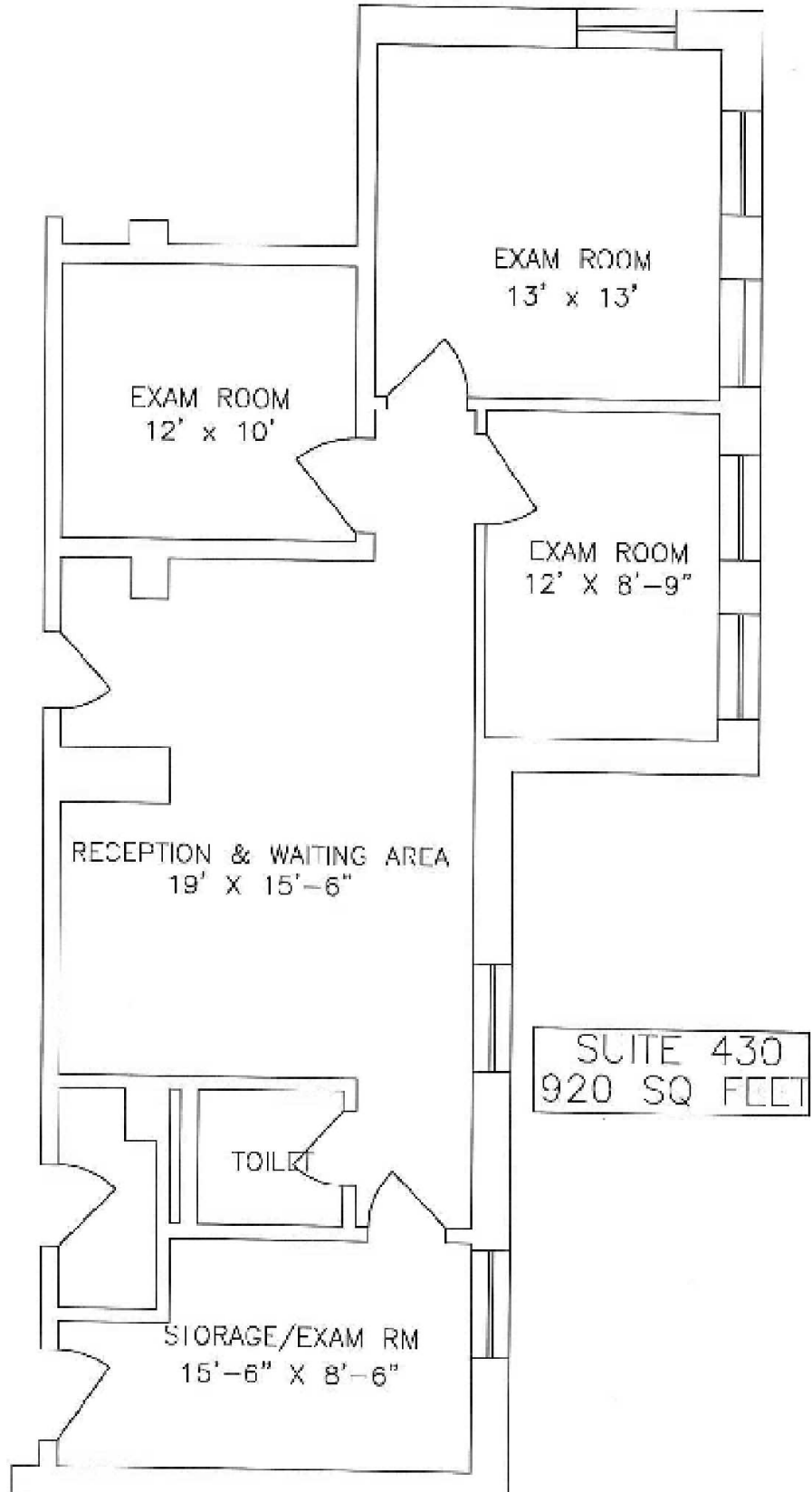




JAMESON.

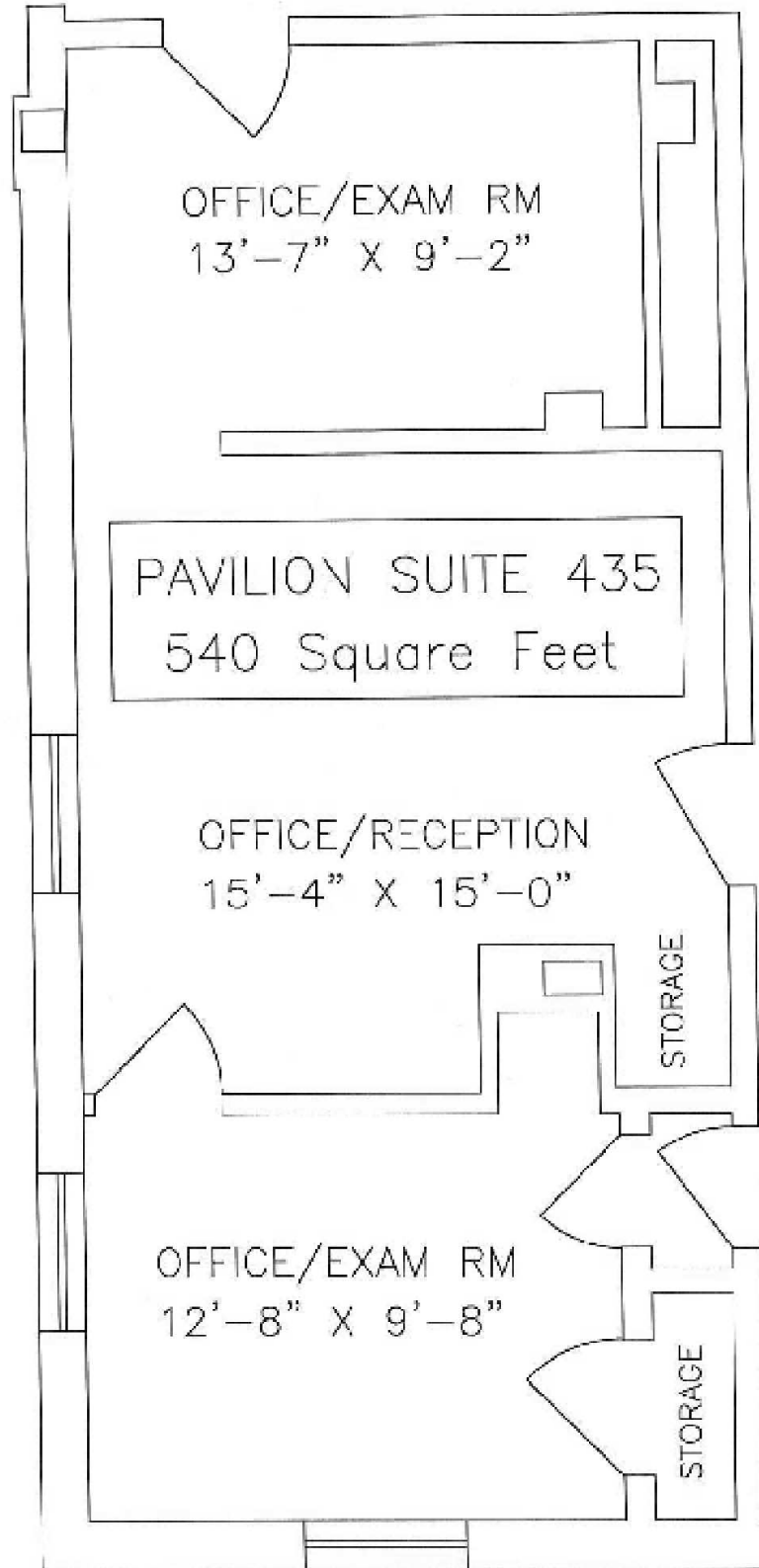
SUITE 430: 920 SF, \$1,533/MONTH

5015 North Paulina Street, Chicago, IL 60640



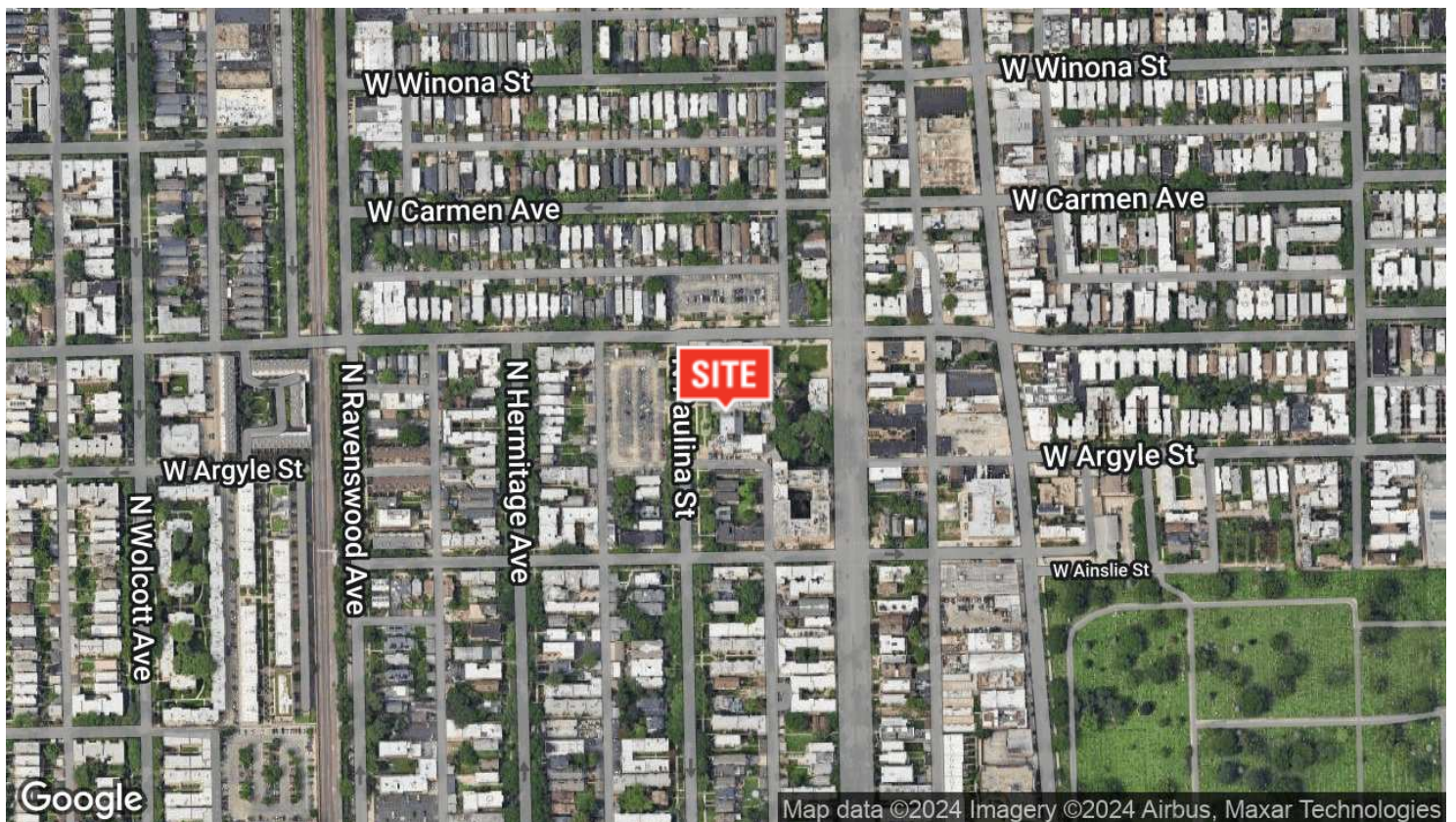
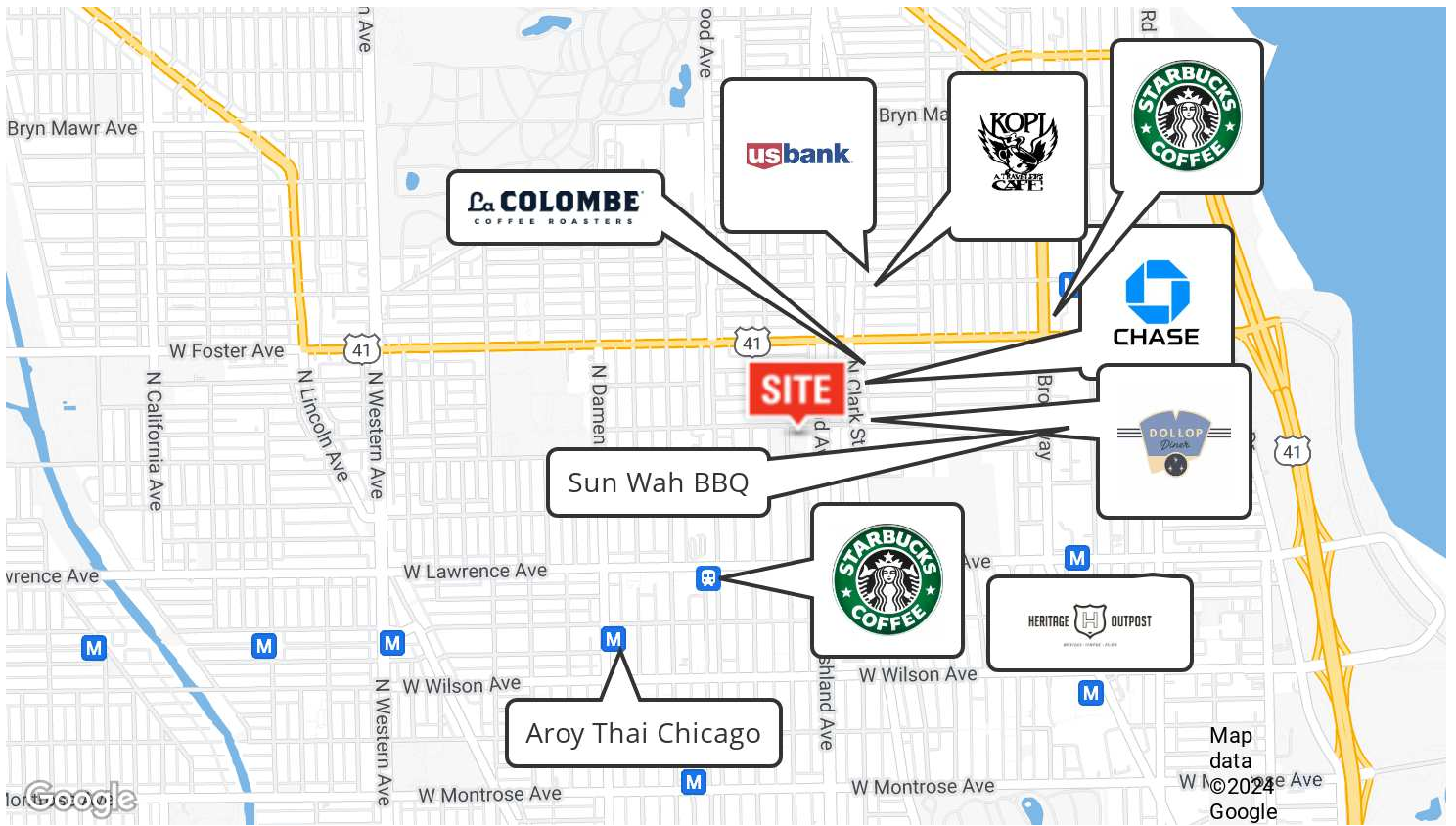
SUITE 435: 540 SF, \$900/MONTH

5015 North Paulina Street, Chicago, IL 60640



# AERIAL & STREET DETAIL

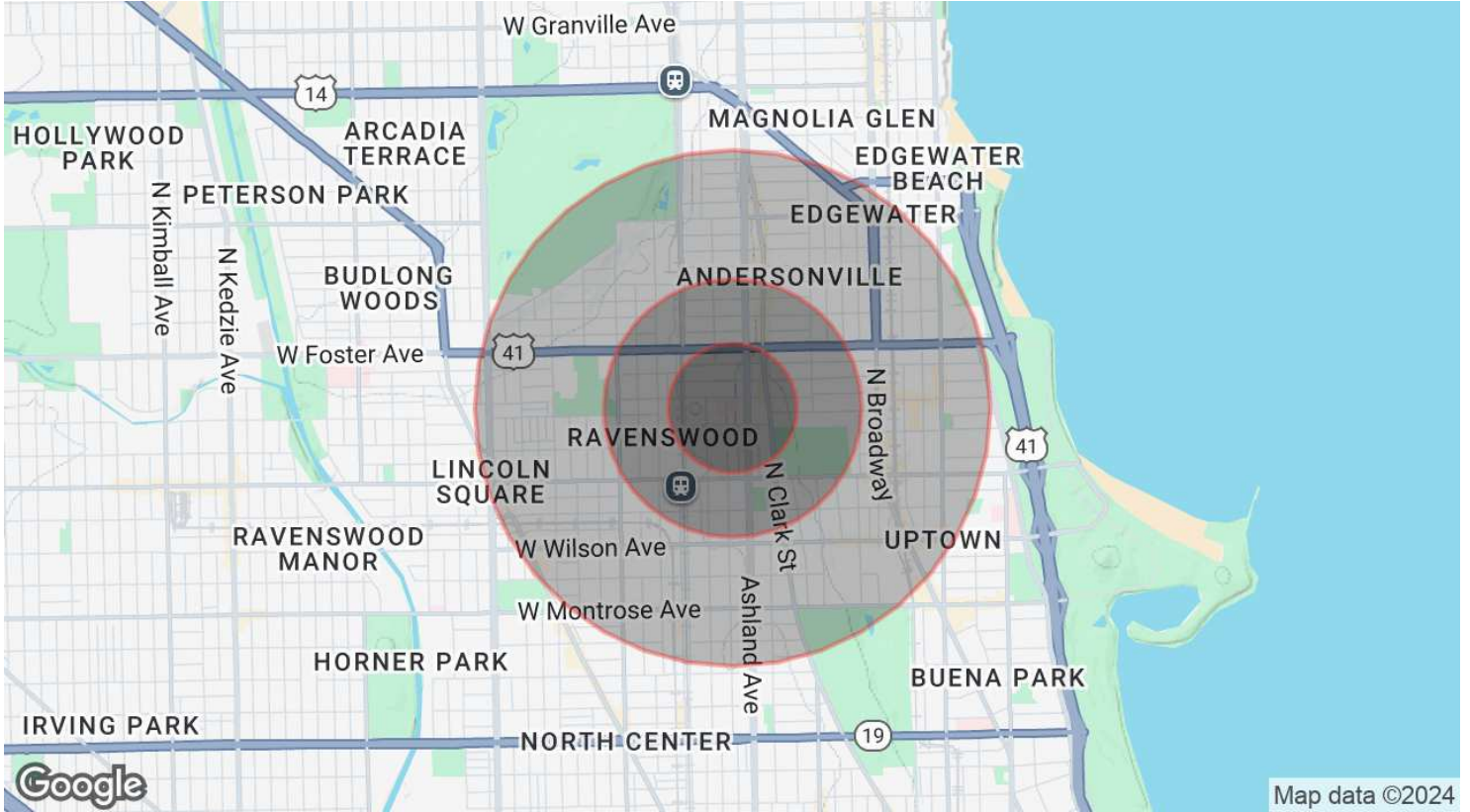
5015 North Paulina Street, Chicago, IL 60640





# DEMOGRAPHICS MAP & REPORT

5015 North Paulina Street, Chicago, IL 60640



## POPULATION

	0.25 MILES	0.5 MILES	1 MILE
Total Population	4,674	17,646	77,485
Average Age	38.5	35.8	37.2
Average Age (Male)	38.7	36.0	37.3
Average Age (Female)	40.2	36.7	37.5

## HOUSEHOLDS & INCOME

	0.25 MILES	0.5 MILES	1 MILE
Total Households	2,627	9,532	41,614
# of Persons per HH	1.8	1.9	1.9
Average HH Income	\$99,493	\$99,126	\$89,983
Average House Value	\$372,381	\$382,124	\$371,870

2020 American Community Survey (ACS)