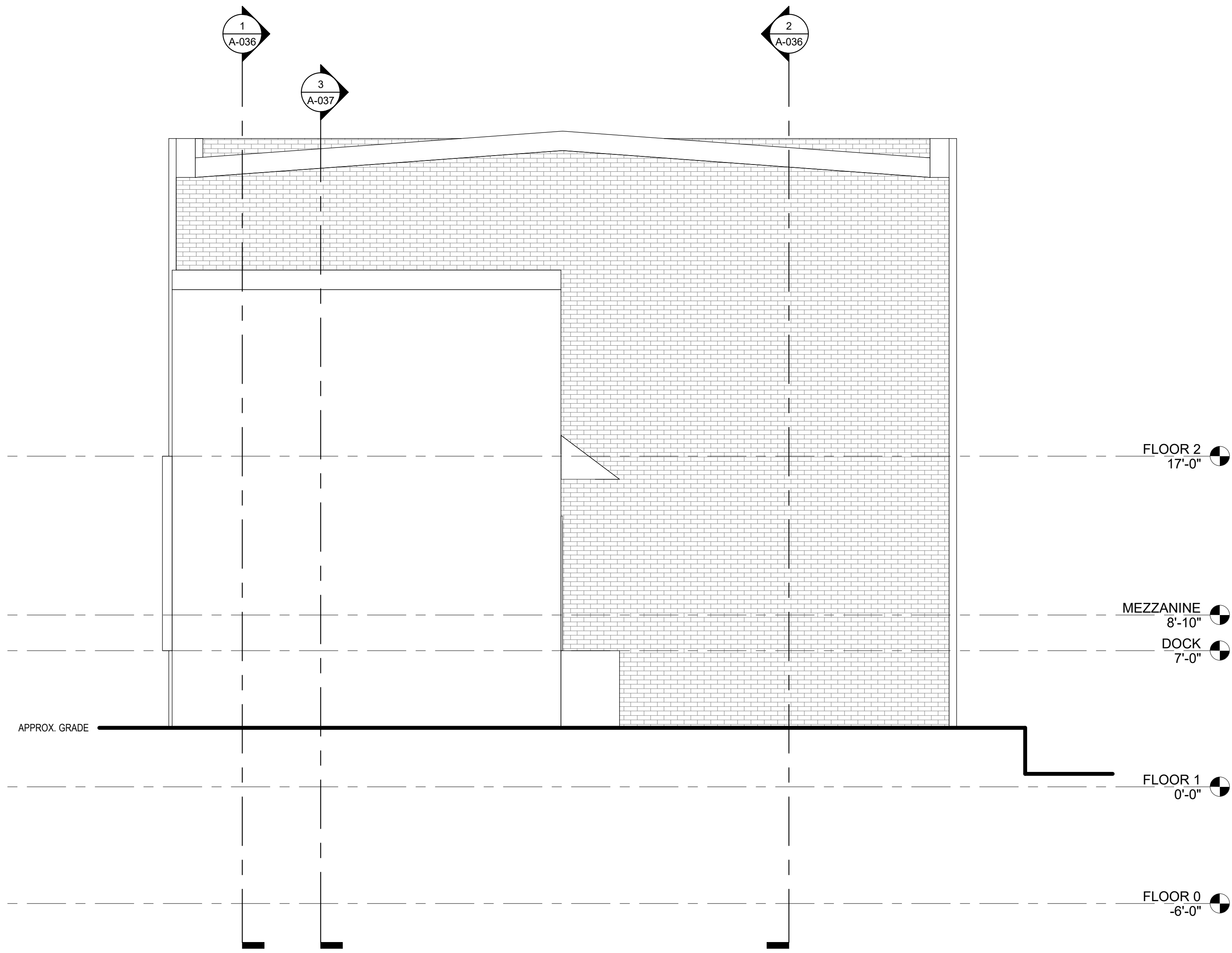


2 WEST ELEVATION
1/4" = 1'-0"



1 EAST ELEVATION
1/4" = 1'-0"

ALL EXISTING DIMENSIONS
SHOWN ARE APPROXIMATE.
VERIFY ALL DIMENSIONS IN FIELD.

RELEASES:

No.	DATE	DESCRIPTION OF CHANGES
1	8/25/23	EXISTING CONDITIONS

DATE:	8/25/23
PROJECT #:	230240
DRAWN BY:	Author
PK:	Checker
PIC:	Approver

DRAWING NO.

A-034