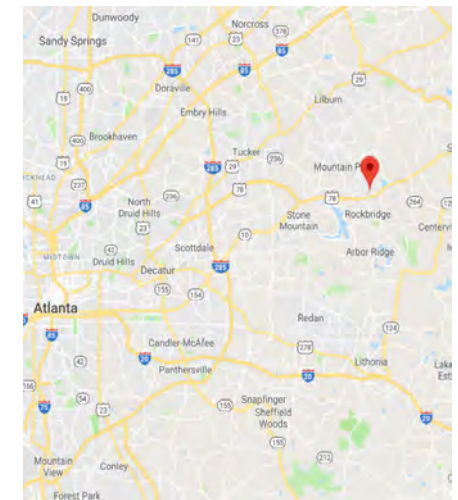


Parker Court Business Center

1960 & 1980 Parker Court, Stone Mountain, GA 30087

PROJECT FEATURES & HIGHLIGHTS

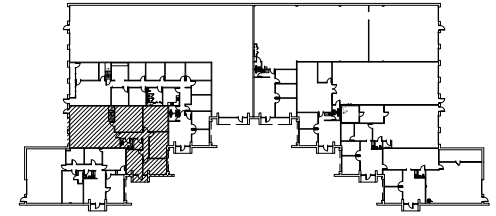
- 2,749 to 9,174 SF Available
- Flexible Configurations
- Major Improvements Made January 2019
- \$8.50-\$10.00/NNN
- Multiple Dock-High and Drive-In Doors
- Heated Industrial Units
- Excellent US-78 Access
- Monument Signage Available



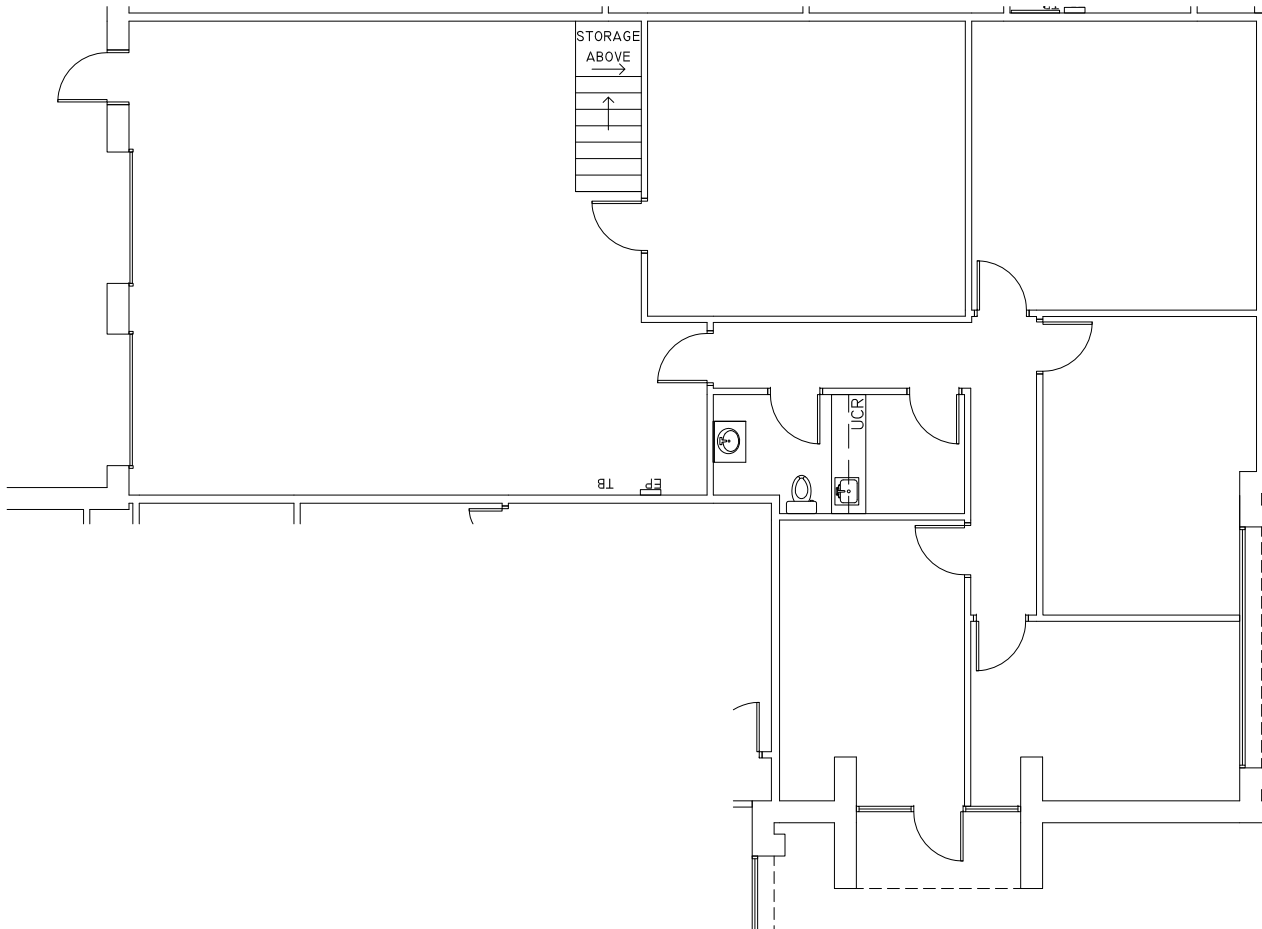
Will Middour
9678.775.8970
WMIDDOUR@MIDDOURINVESTMENTS.COM

Allie Schonberg
404.242.1660
ASCHONBERG@MIDDOURINVESTMENTS.COM

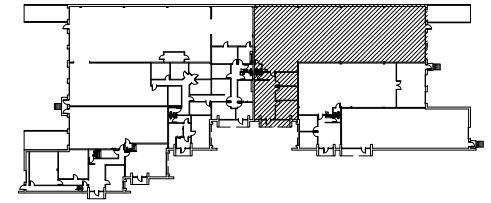
Middour Investments, LLC
www.middourinvestments.com
3060 Peachtree Rd, Ste 1080 Atlanta, GA 30305



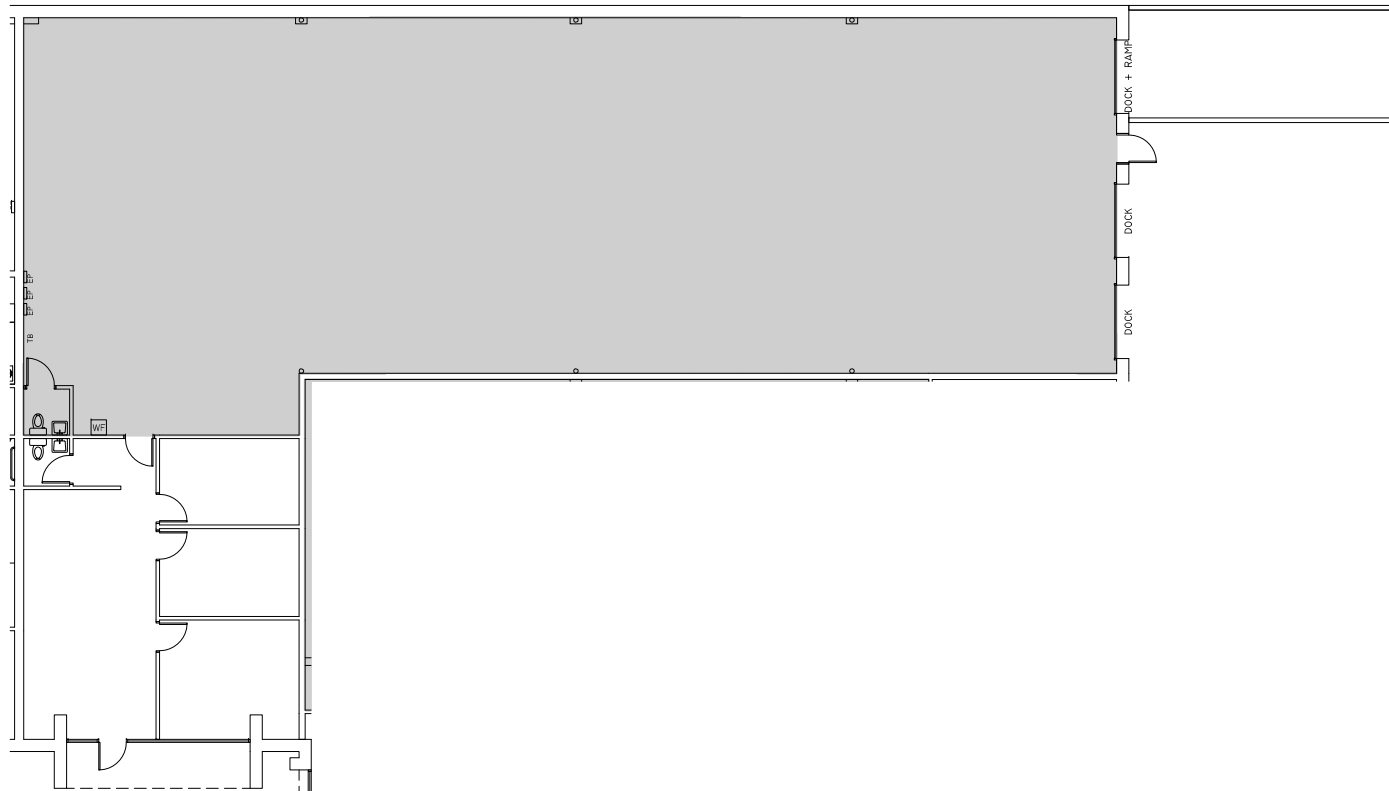
KEYPLAN



Will Middour 404.290.9713
wmiddour@middourinvestments.com
Allie Schonberg 404.242.1660
aschonberg@middourinvestments.com



KEYPLAN



Will Middour 404.290.9713
wmiddour@middourinvestments.com
Allie Schonberg 404.242.1660
aschonberg@middourinvestments.com