



Medical Office for Lease

Excellent location on Eastside St. with ample parking and easy access. Dove Sleep Center occupies one side of the building, and the available office space is on the other side. The floor plan offers three, spacious offices, a wide hallway with waiting area potential, two restrooms in the common area, an attractive vestibuled entry in front, and a handicap accessible entry off the parking lot in the back.

Property Information

- Three Private Offices
- Wide Hallway Offers Potential for Additional Workspace
- Two Common Area Restrooms and Access to Shared Laundry Room
- Front Entry With Vestibule
- Wheel chair Accessible Entry in Rear
- Ample Parking
- Great Visibility on Eastside St.
- Former Massage Therapy
- Nextdoor to Sleep Clinic
- Space Available: 1,094 Sf
- Lease Rate: \$20.00/sf/yr NNN

DISCLAIMER: The above information has been secured from sources believed to be reliable, however, no representations are made to its accuracy. Prospective tenants or buyers should consult their professional advisors and conduct their own independent investigation. Properties are subject to change in price and/or availability without notice.



11120 Gravelly Lake Dr SW Ste 2
Lakewood, Washington 98499
johnson-commercial.com (253) 589-9999

Margot Johnson

margot@johnson-commercial.com
O: (253) 589-9999 C: (253) 209-9998

Tim Johnson

timothy@johnson-commercial.com
O: (253) 589-9999 C: (253) 209-9999



EXTERIOR PHOTOS



EXTERIOR PHOTOS



11120 Gravelly Lake Dr SW Ste 2
Lakewood, Washington 98499
johnson-commercial.com (253) 589-9999

Margot Johnson

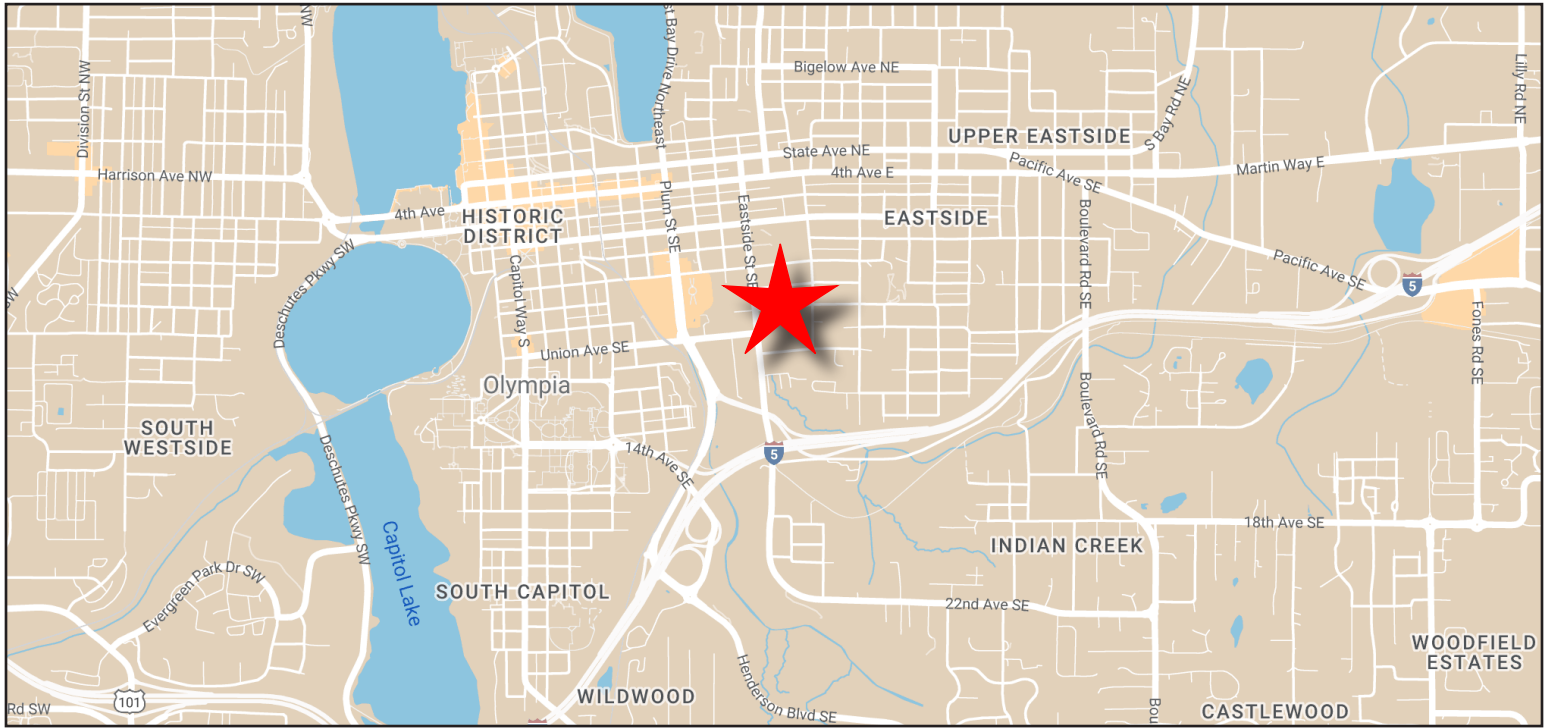
margot@johnson-commercial.com
O: (253) 589-9999 C: (253) 209-9998

Tim Johnson

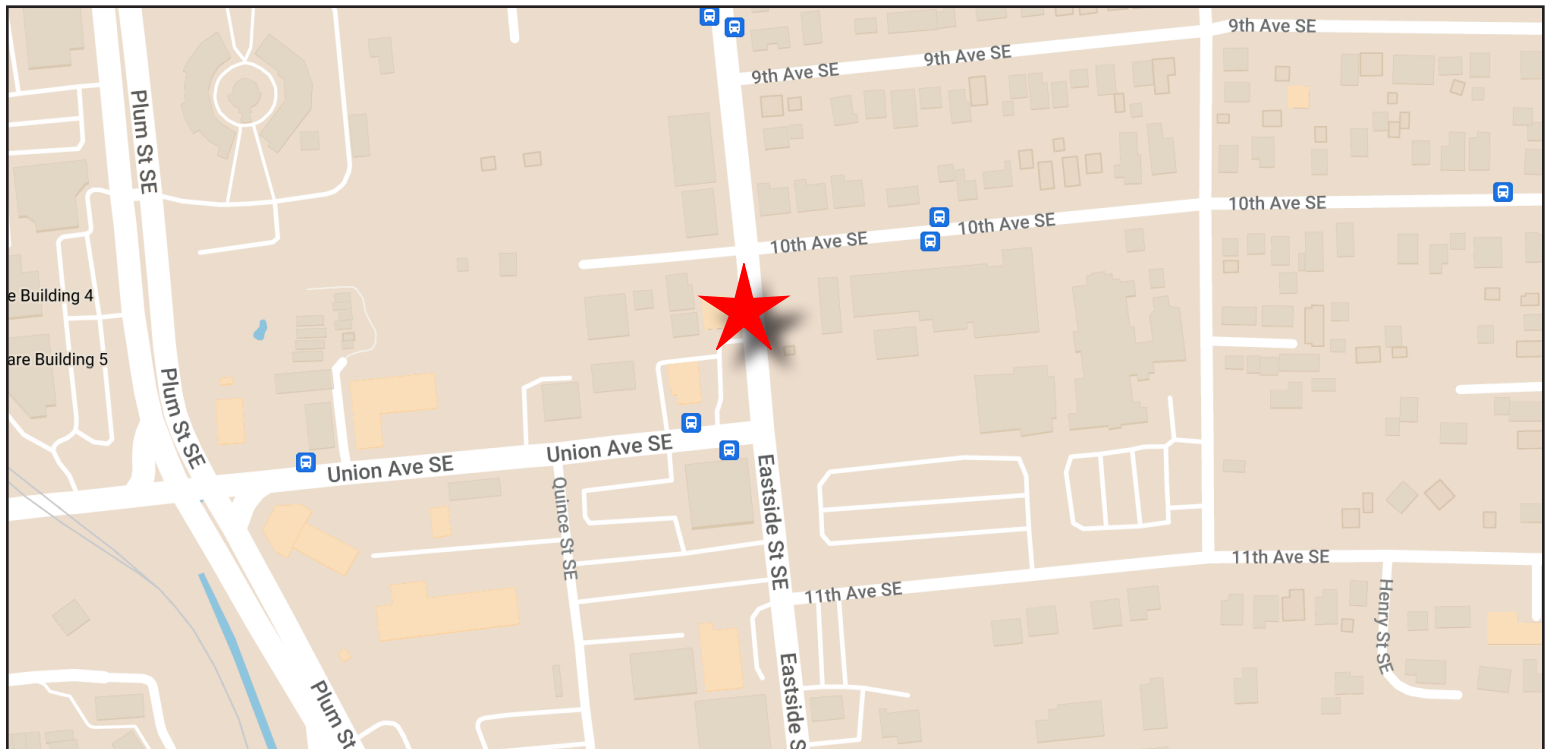
timothy@johnson-commercial.com
O: (253) 589-9999 C: (253) 209-9999



AREA MAP



NEIGHBORHOOD MAP



11120 Gravelly Lake Dr SW Ste 2
Lakewood, Washington 98499
johnson-commercial.com (253) 589-9999

Margot Johnson

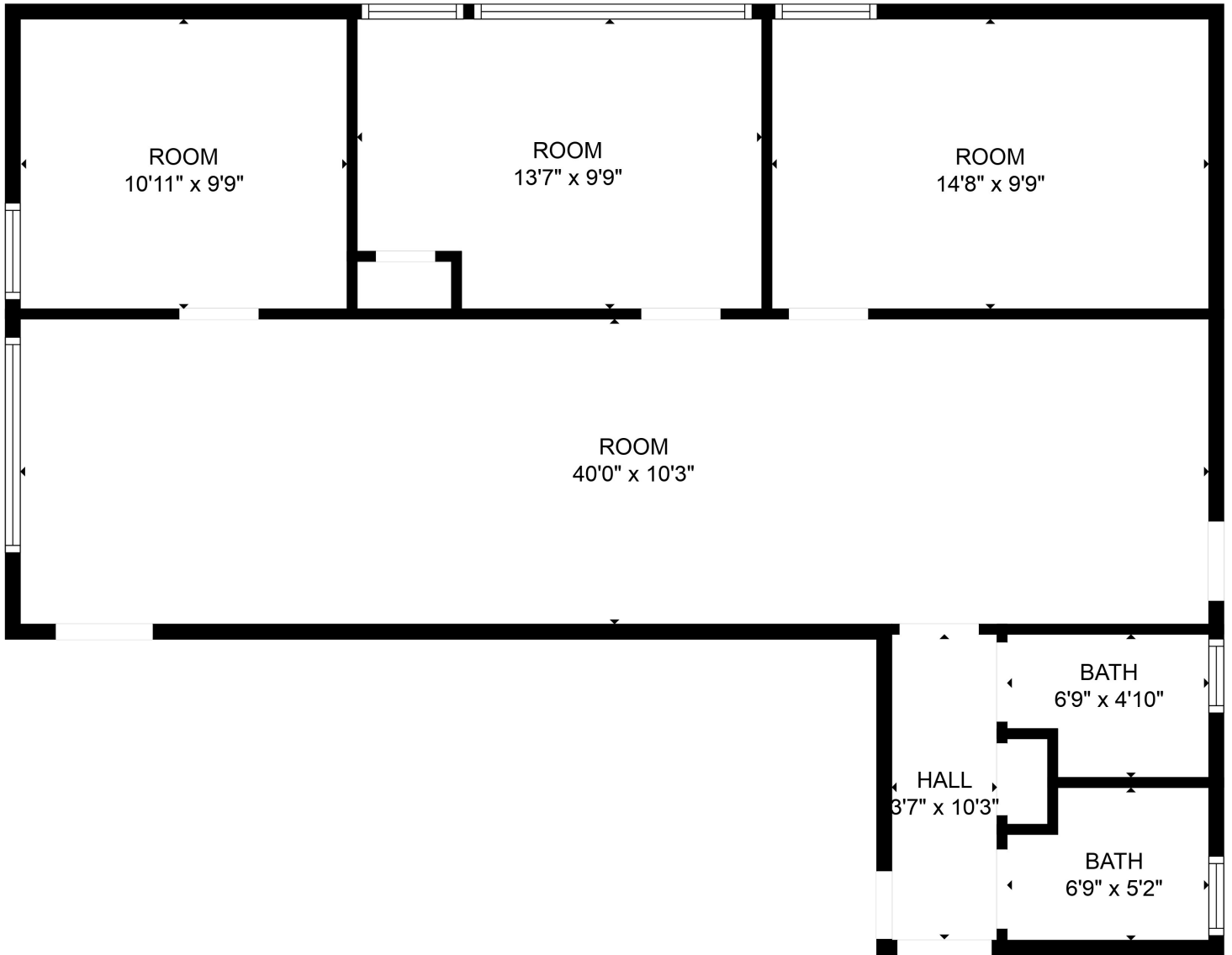
margot@johnson-commercial.com
O: (253) 589-9999 C: (253) 209-9998

Tim Johnson

timothy@johnson-commercial.com
O: (253) 589-9999 C: (253) 209-9999



SKETCH OF FLOOR PLAN



FLOOR PLAN CREATED BY CUBICASA APP. MEASUREMENTS DEEMED HIGHLY RELIABLE BUT NOT GUARANTEED.



11120 Gravelly Lake Dr SW Ste 2
Lakewood, Washington 98499
johnson-commercial.com (253) 589-9999

Margot Johnson

margot@johnson-commercial.com
O: (253) 589-9999 C: (253) 209-9998

Tim Johnson

timothy@johnson-commercial.com
O: (253) 589-9999 C: (253) 209-9999