

32600 INDUSTRIAL DRIVE
MADISON HEIGHTS, MICHIGAN

INDUSTRIAL FOR SALE
20,880 Square Feet Available



**SIGNATURE
ASSOCIATES**
KNOW SIGNATURE | KNOW RESULTS



PROPERTY FEATURES

- 20,880 square feet available
- 2,880 square feet of office
- 15' clear height
- (2) 12' x 14' grade level doors
- 1000 amps, 480 volts, buss duct power distribution
- Solid manufacturing facility with potential outside storage
- Natural light throughout
- Located on 1.770 acres
- Less than two miles from I-75
- Sale Price: \$1,695,000 (\$81.18/sq. ft.)



For more information, please contact:

BEN WILKIEMEYER
(248) 359 0624
bwilkiemeyer@signatureassociates.com

JOE BANYAI
(248) 948 0108
jbanyai@signatureassociates.com

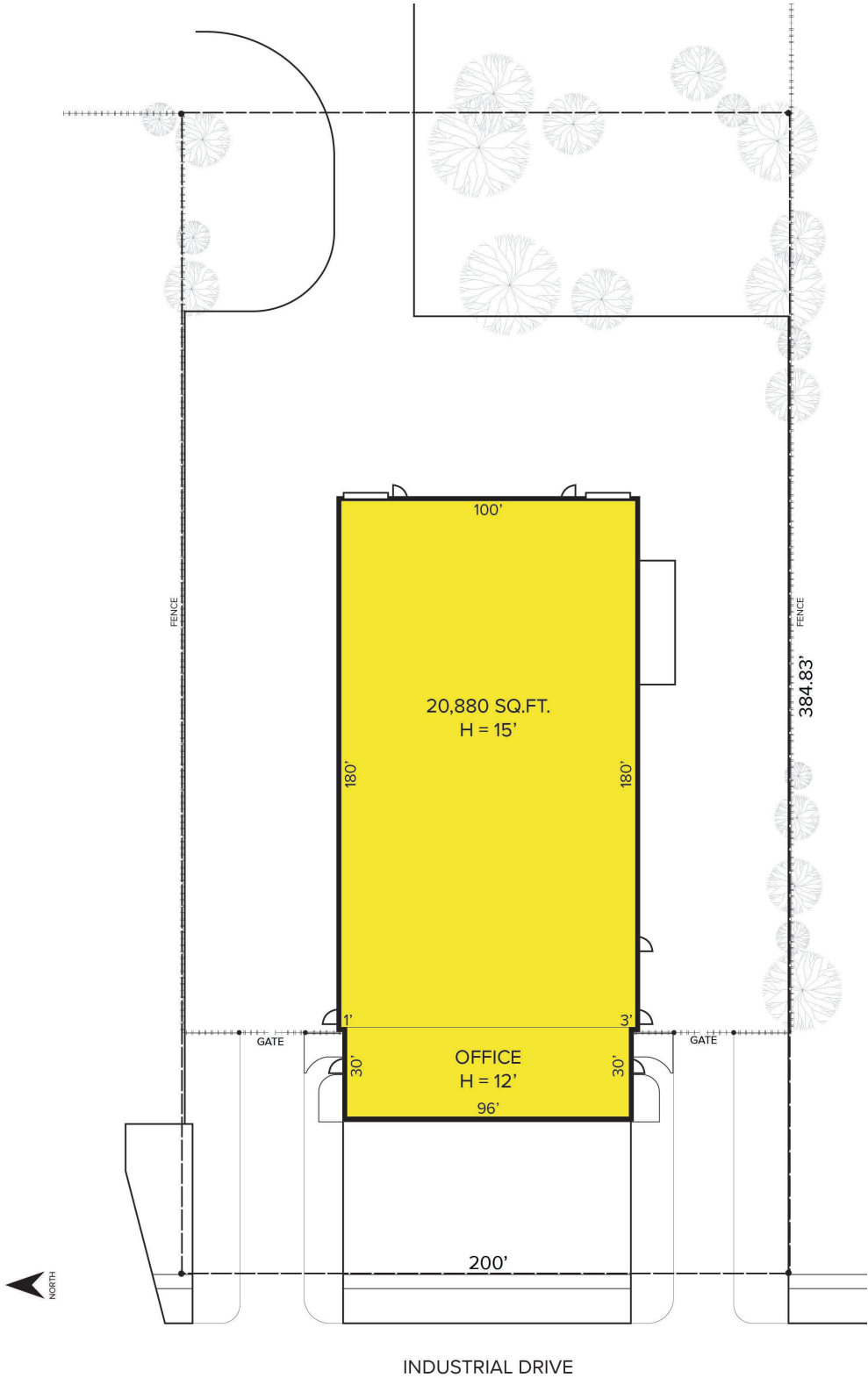
SIGNATURE ASSOCIATES
One Towne Square, Suite 1200
Southfield, MI 48076
www.signatureassociates.com

32600 Industrial Drive – Madison Heights, Michigan

Industrial For Sale

20,880
Square Feet
AVAILABLE

Site Plan



For more information, please contact:

BEN WILKIEMEYER
(248) 359 0624
bwilkiemeyer@signatureassociates.com

JOE BANYAI
(248) 948 0108
jbanyai@signatureassociates.com

SIGNATURE ASSOCIATES
One Towne Square, Suite 1200
Southfield, MI 48076
www.signatureassociates.com

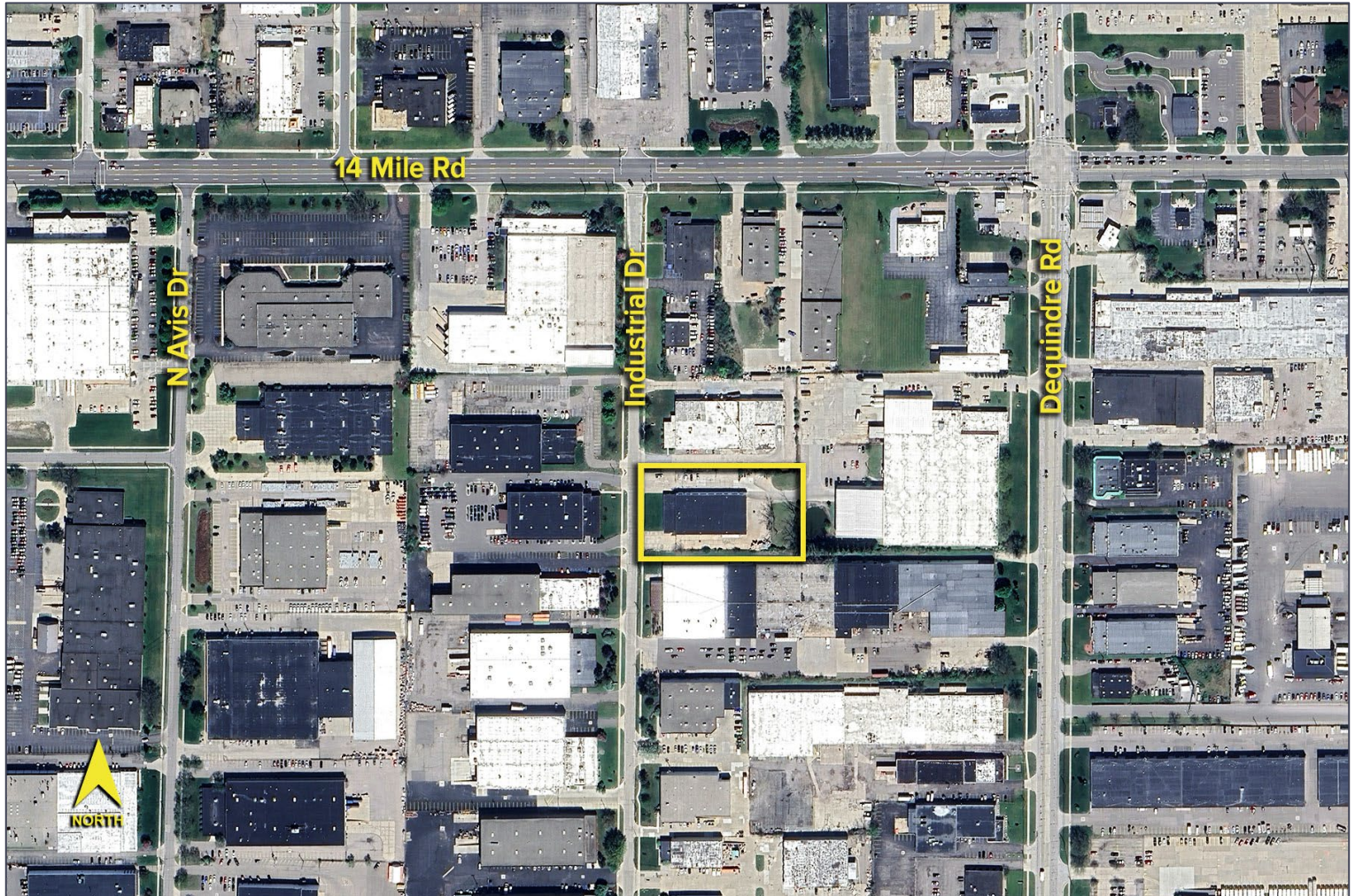
Information is subject to verification and no liability for errors or omissions is assumed. Price is subject to change and listing withdrawal.

32600 Industrial Drive – Madison Heights, Michigan

Industrial For Sale

20,880
Square Feet
AVAILABLE

Aerial



For more information, please contact:

BEN WILKIEMEYER
(248) 359 0624
bwilkiemeyer@signatureassociates.com

JOE BANYAI
(248) 948 0108
jbanyai@signatureassociates.com

SIGNATURE ASSOCIATES
One Towne Square, Suite 1200
Southfield, MI 48076
www.signatureassociates.com